

# FROM THE FOUNDER OF THE #VIKISEWS BRAND

---

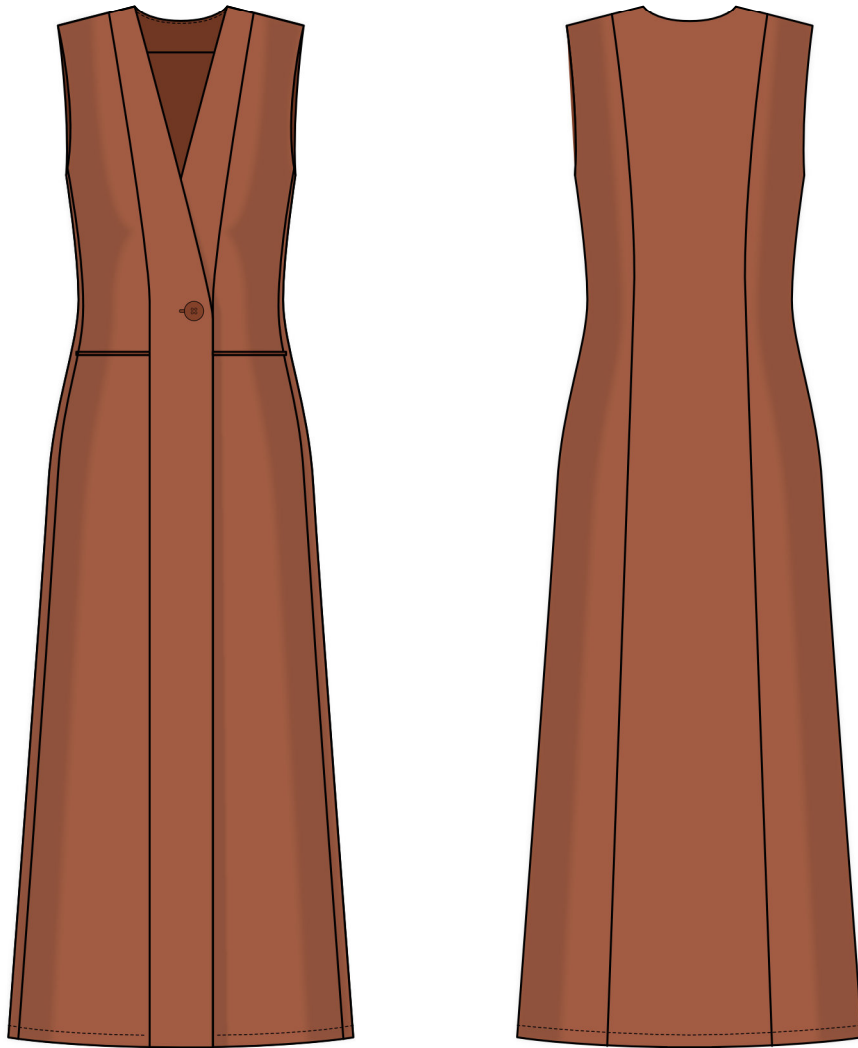


Back in 2016, when I was working on my first set of sewing instructions, I was trying to write them in such a way that even a complete beginner could easily understand and use them to create their very first garment. These instructions laid the foundation for the Vikisews brand, its vision and its mission. I wanted to create modern patterns with the utmost detailed and clear instructions.

Now, with each new collection we are constantly improving our instructions, amending them and adding more relevant details. By the time the final product reaches you, our drafters, correctors, and editors would have spent weeks perfecting every word and every photograph. If you compile a few of our instructions together, you will get a sewing manual that will assist you in sewing all kinds of garments at any difficulty level.

And I would be very happy if these instructions helped you to turn your hobby into a lifelong passion... Enjoy the process! Create your ultimate dream wardrobe! Wear your garments proudly for years to come!

If you have any questions, please contact us at [info@vikisews.com](mailto:info@vikisews.com) — we are always there to help.



## JEMMA PATTERN DESCRIPTION

---

Jemma is a semi-fitted dress with an accentuated waist. The back and front features princess seams that start at the shoulder seams. The neckline is deep and V-shaped. There are welt pockets on the front. The dress features a double-breasted closure that fastens with one button and sew-on snaps. Jemma is above-ankle length.



## IMPORTANT!

---

The contents of this pattern are copyright protected and belong exclusively to Vikisews. You may use Vikisews patterns for personal use. It is prohibited to share Vikisews patterns and instructions with third parties, as well as to publish patterns and instructions online for public access. **Non-compliance with the mentioned rules is a violation of the US copyright law and may result in civil liability and criminal prosecution.**

You may use Vikisews patterns for commercial use, to sew custom-made garments and/or create fashion collections, on the condition that the patterns are solely used in a manufacturing setting and are not further shared with individuals.

# TOTAL EASE ALLOWANCE

	Bust ease	Waistline ease	Hipline ease
cm	8.8–11.4	23.5–24.5	10.7–8.4
inches	3 1/2–4 1/2	9 1/4–9 5/8	4 1/4–3 1/4

# GARMENT LENGTH

Height, cm	Back length, cm	Height, ft	Back length, in
1 (154–160)	125.6–128.6	1 (5'1"–5'3")	49 1/2–50 5/8
2 (162–168)	129.5–132.6	2 (5'4"–5'6")	51–52 1/4
3 (170–176)	133.5–136.5	3 (5'7"–5'9")	52 1/2–53 3/4
4 (178–184)	137.5–140.5	4 (5'10"–6'1")	54 1/8–55 3/8

# SUGGESTED FABRIC

To sew this dress, choose dress-weight fabrics with the following properties: medium weight, pliable, soft, non-stretch or low-stretch, opaque. The fiber content can include natural fibers, artificial fibers, blends, or synthetics.

The following fabrics are recommended: dress-weight viscose, ramie, linen, cotton.

**Attention!** We do not recommend stretchy knit fabrics and lightweight sheer fabrics (chiffon, organza, stretch lace).

The dress in the photo is made of linen. The fabric is medium weight, pliable, soft, and non-stretch. The fiber content is 100% linen. The fabric weight is 220 g/m<sup>2</sup>.

# FABRIC AND NOTIONS REQUIREMENTS

1. Main fabric, 140 cm wide, with a directional print/nap, in meters:

Height, cm	Size							
	34–38	40	42	44	46	48	50	52
1 (154–160)	2.15	2.25	2.55	2.6	2.65	2.65	2.75	2.75
2 (162–168)	2.25	2.35	2.65	2.65	2.7	2.7	2.8	2.8
3 (170–176)	2.3	2.4	2.7	2.75	2.75	2.8	2.9	2.9
4 (178–184)	2.4	2.45	2.75	2.8	2.8	2.85	3	3

Main fabric, 55" wide, with a directional print/nap, in yards:

Height, ft	Size							
	34–38	40	42	44	46	48	50	52
1 (5'1"–5'3")	2 3/8	2 1/2	2 3/4	2 7/8	2 7/8	2 7/8	3	3
2 (5'4"–5'6")	2 1/2	2 5/8	2 7/8	2 7/8	3	3	3	3
3 (5'7"–5'9")	2 1/2	2 5/8	3	3	3	3	3 1/8	3 1/8
4 (5'10"–6'1")	2 5/8	2 5/8	3	3	3	3 1/8	3 1/4	3 1/4

**IMPORTANT!** When purchasing fabric, please account for shrinkage and buy 5% more than required.

2. Lightweight interfacing, knit or woven, 140 cm (55") wide, 30 g/m<sup>2</sup> — 1.5 m (1 5/8 yd)
3. Stitched bias-cut fusible stay tape with stitch reinforcement, 1.5 cm (5/8") wide — 4.5 m (4 7/8 yd)
4. Three sew-on snaps, 0.7–1 cm (1/4–3/8") in diameter
5. One button, 2 cm (3/4") in diameter
6. Matching thread — 5 spools (1 spool for the sewing machine + 4 spools for the overlocker)

## TOOLS AND EQUIPMENT

- sewing machine for construction
- overlocker for finishing raw edges. This may be replaced with a stretch overlock stitch or a zigzag stitch on the sewing machine (overlock or zigzag stitch width 2–3 mm, stitch length 2.5 mm).
- buttonhole foot for the sewing machine
- stitch-in-the-ditch foot for the sewing machine (optional)

# PATTERN PIECES LIST

---

## 1. From main fabric:

- center front — cut 2
- top side front — cut 2
- bottom side front— cut 2
- center back — cut 1 on fold
- side back — cut 2
- front facing — cut 2
- back neck facing — cut 1
- pocket lining — cut 2
- pocket welt — cut 2
- front armscye facing — cut 2
- back armscye facing — cut 2

***IMPORTANT!** Don't forget to transfer all pattern markings and notches onto the fabric.*

## 2. From interfacing:

- front facing — cut 2
- back neck facing — cut 1
- pocket welt — cut 2
- front armscye facing — cut 2
- back armscye facing — cut 2

# SEAM ALLOWANCES

---

All pattern pieces include seam allowances as follows:

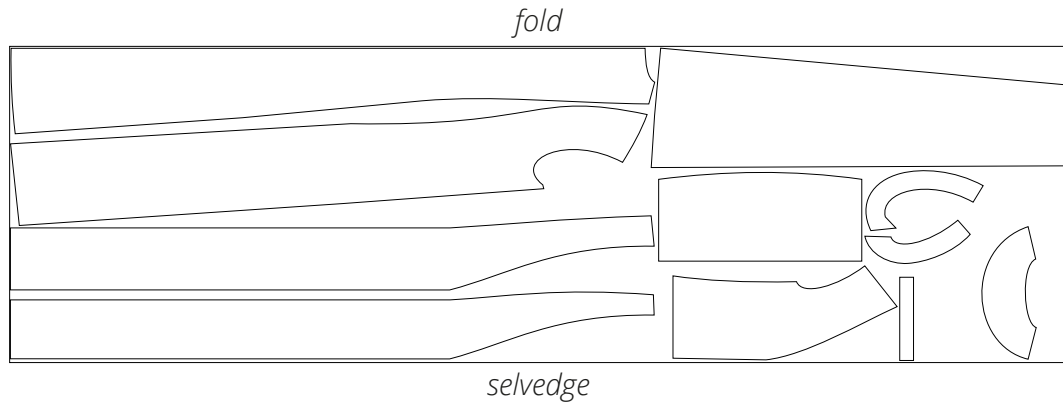
- garment hem allowance — 3 cm (1 1/8")
- all other edges — 1 cm (3/8")

Take this into account when laying out the pattern pieces on the fabric.

# CUTTING LAYOUT

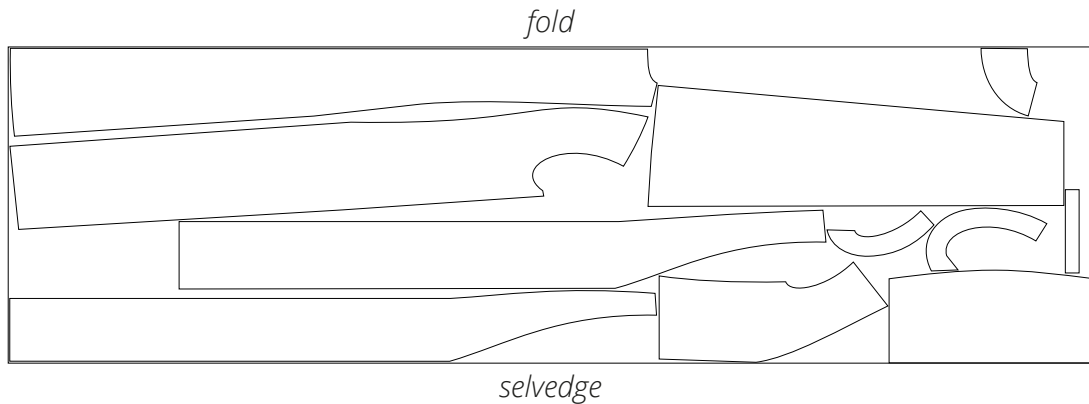
---

Main fabric, 140 cm (55") wide, with a directional print/nap,  
cut on fold, for sizes 34–38 in all heights

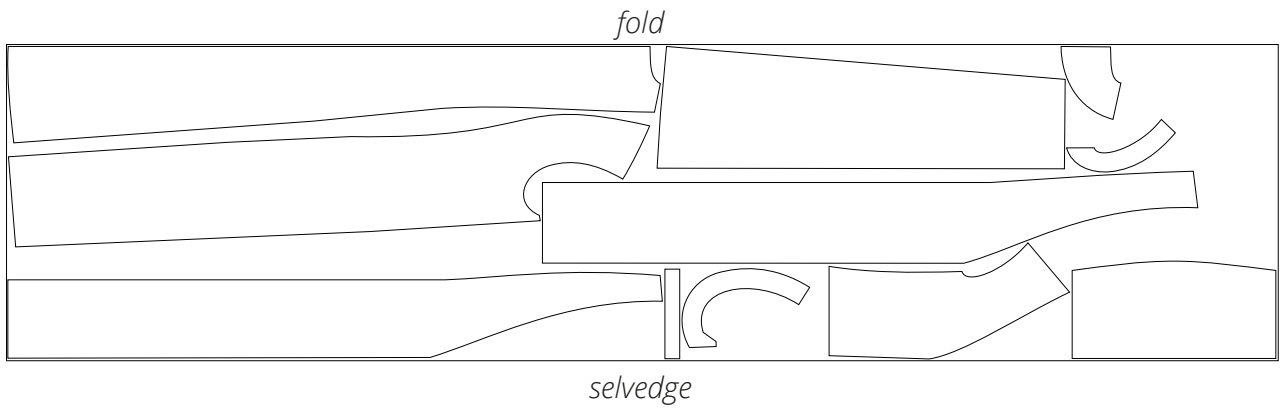


**Attention!** The back neck facing piece is cut on fold out of the leftover fabric. Cut one back neck facing piece only.

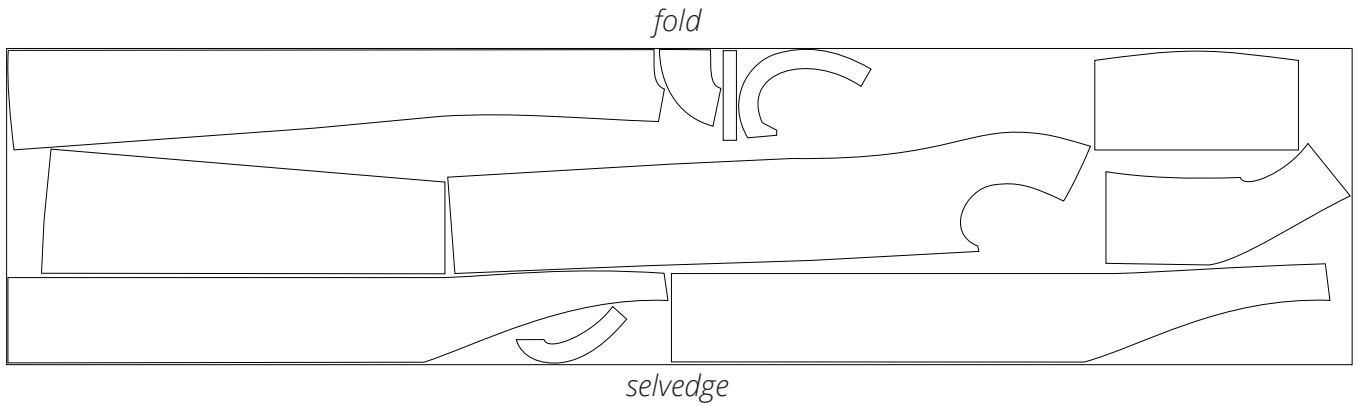
Main fabric, 140 cm (55") wide, with a directional print/nap,  
cut on fold, for size 40 in all heights



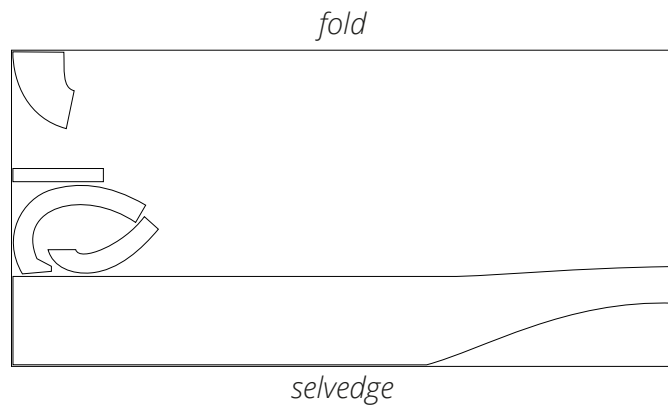
Main fabric, 140 cm (55") wide, with a directional print/nap,  
cut on fold, for sizes 42-48 in all heights



Main fabric, 140 cm (55") wide, with a directional print/nap,  
cut on fold, for sizes 50-52 in all heights



Interfacing, 140 cm (55") wide, cut on fold,  
for all sizes in all heights



**READY? LET'S GET SEWING!**



Hand-baste along the pocket welt and side edges.



Place the assembled side front piece right sides together with the center front piece. Align the princess seam edges, match the notches, and pin. Machine-stitch, backstitching at the beginning and end of the seam.



Remove the basting stitches from the side edge of the pocket lining along the princess seam.