

FROM THE FOUNDER OF THE #VIKISEWS BRAND

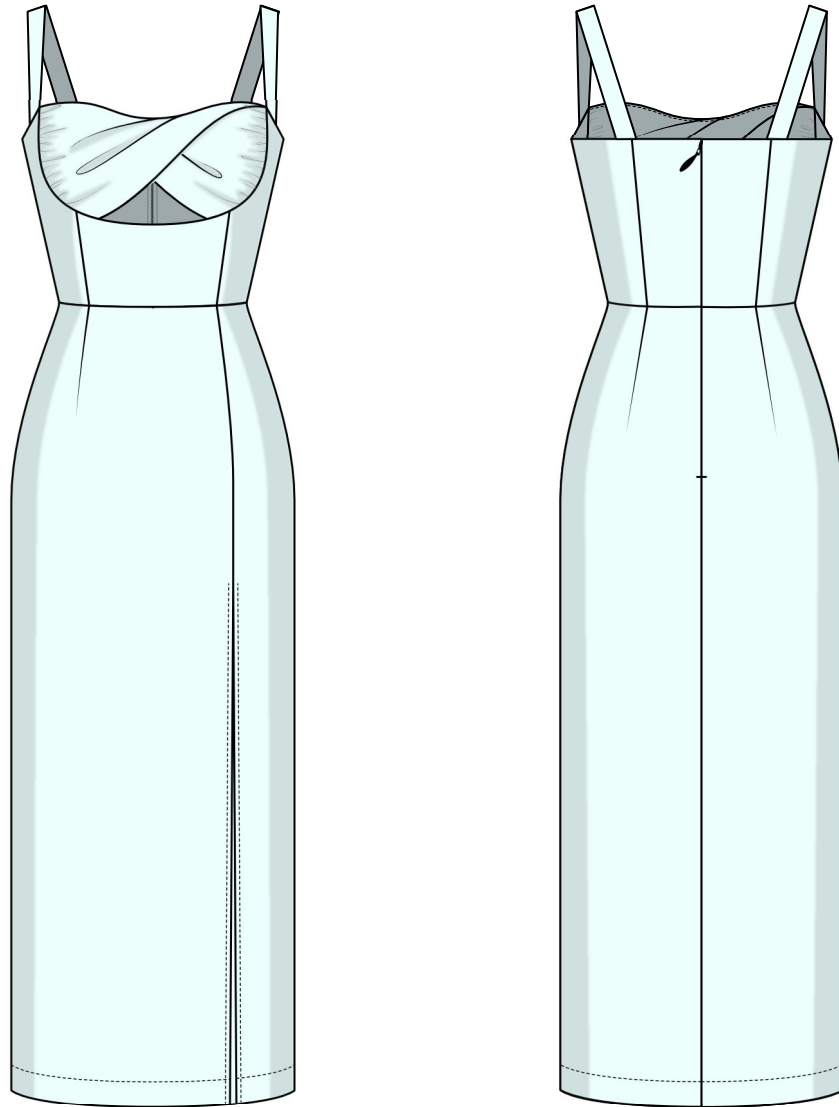


Back in 2016, when I was working on my first set of sewing instructions, I was trying to write them in such a way that even a complete beginner could easily understand and use them to create their very first garment. These instructions laid the foundation for the Vikisews brand, its vision and its mission. I wanted to create modern patterns with the utmost detailed and clear instructions.

Now, with each new collection we are constantly improving our instructions, amending them and adding more relevant details. By the time the final product reaches you, our drafters, correctors, and editors would have spent weeks perfecting every word and every photograph. If you compile a few of our instructions together, you will get a sewing manual that will assist you in sewing all kinds of garments at any difficulty level.

And I would be very happy if these instructions helped you to turn your hobby into a lifelong passion... Enjoy the process! Create your ultimate dream wardrobe! Wear your garments proudly for years to come!

If you have any questions, please contact us at info@vikisews.com — we are always there to help.



KAROLINA PATTERN DESCRIPTION

Karolina is a close-fitting dress with an accentuated waist. It features a waist seam and straps. The bodice is self-lined and fitted with princess seams that transition into waist darts on the skirt. On the left side of the front skirt, there is a princess seam that ends with a high slit. The front features a deep cutout below the bust. At the bust level, the bodice has a twisted panel. The deep neckline is shaped. The dress fastens with an invisible zipper and a hook-and-eye closure in the center back seam. Karolina is above-ankle length.



IMPORTANT!

The contents of this pattern are copyright protected and belong exclusively to Vikisews. You may use Vikisews patterns for personal use. It is prohibited to share Vikisews patterns and instructions with third parties, as well as to publish patterns and instructions online for public access. **Non-compliance with the mentioned rules is a violation of the US copyright law and may result in civil liability and criminal prosecution.**

You may use Vikisews patterns for commercial use, to sew custom-made garments and/or create fashion collections, on the condition that the patterns are solely used in a manufacturing setting and are not further shared with individuals.

TOTAL EASE ALLOWANCE

	Bust ease (estimated)	Waistline ease	Hipline ease
cm	-2.6–3.4	-1.9–1.2	-0.7–2
inches	-1–1 3/8	-3/4–1/2	-1/4–3/4

GARMENT LENGTH

Height, cm	Back length from waist down, cm	Height, ft	Back length from waist down, in
1 (154–160)	87.8–88.5	1 (5'1"–5'3")	34 5/8–34 7/8
2 (162–168)	90.7–91.6	2 (5'4"–5'6")	35 3/4–36 1/8
3 (170–176)	93.9–94.6	3 (5'7"–5'9")	37–37 1/4
4 (178–184)	96.8–97.6	4 (5'10"–6'1")	38 1/8–38 3/8

SUGGESTED FABRIC

To sew this dress, choose dress-weight fabrics with the following properties: medium weight, soft, low-stretch, opaque. The fiber content can include natural fibers, artificial fibers, blends, or synthetics. The following fabrics are recommended: linen, ramie, dress-weight denim, cotton.

Attention! We do not recommend stretchy knit fabrics and lightweight sheer fabrics (chiffon, organza, stretch lace).

The dress in the photo is made of linen. The fabric is medium weight, soft, and low-stretch. The fiber content is 100% linen. The fabric weight is 150 g/m².

FABRIC AND NOTIONS REQUIREMENTS

1. Main fabric, 140 cm wide, with a directional print/nap, in meters:

Height, cm	Size					
	34	36–38	40	42	44–48	50–52
1 (154–160)	1.25	1.35	1.4	1.5	1.6	1.7
2 (162–168)	1.25	1.35	1.45	1.55	1.65	1.75
3 (170–176)	1.3	1.4	1.5	1.6	1.7	1.8
4 (178–184)	1.3	1.45	1.55	1.65	1.75	1.85

Main fabric, 55" wide, with a directional print/nap, in yards:

Height, ft	Size					
	34	36–38	40	42	44–48	50–52
1 (5'1"–5'3")	1 3/8	1 1/2	1 1/2	1 5/8	1 3/4	1 7/8
2 (5'4"–5'6")	1 3/8	1 1/2	1 5/8	1 3/4	1 3/4	1 7/8
3 (5'7"–5'9")	1 3/8	1 1/2	1 5/8	1 3/4	1 7/8	2
4 (5'10"–6'1")	1 3/8	1 5/8	1 3/4	1 3/4	1 7/8	2

2. Lightweight interfacing, knit or woven, 140 cm wide, in meters:

Height, cm	Size					
	34–38	40	42	44–48	50	52
1 (154–160)	0.4	0.4	0.4	0.45	0.45	0.45
2 (162–168)	0.4	0.4	0.4	0.45	0.45	0.45
3 (170–176)	0.4	0.4	0.45	0.45	0.45	0.5
4 (178–184)	0.4	0.45	0.45	0.45	0.5	0.5

Lightweight interfacing, knit or woven, 55" wide, in yards:

Height, ft	Size			
	34–38	40	42	44–52
1 (5'1"–5'3")	3/8	3/8	3/8	1/2
2 (5'4"–5'6")	3/8	3/8	3/8	1/2
3 (5'7"–5'9")	3/8	3/8	1/2	1/2
4 (5'10"–6'1")	3/8	1/2	1/2	1/2

IMPORTANT! When purchasing fabric, please account for shrinkage and buy 5% more than required.

3. Stitched bias-cut fusible stay tape with stitch reinforcement, 1.5 cm (5/8") wide, for all heights:

Size	34	36	38	40	42	44	46	48	50	52
Meters	2.2	2.2	2.3	2.4	2.4	2.5	2.5	2.6	2.7	2.7
Yards	2 3/8	2 3/8	2 1/2	2 5/8	2 5/8	2 3/4	2 3/4	2 7/8	3	3

4. One invisible zipper, 40 cm (15 3/4") long, for all sizes in all heights

5. One hook-and-eye closure

6. Matching thread — 5 spools (1 spool for the sewing machine + 4 spools for the overlocker)

TOOLS AND EQUIPMENT

- sewing machine for construction
- overlocker for finishing raw edges. This may be replaced with a stretch overlock stitch or a zigzag stitch on the sewing machine (overlock or zigzag stitch width 2–3 mm, stitch length 2.5 mm)
- invisible zipper foot for the sewing machine
- loop turner

PATTERN PIECES LIST

1. From main fabric:

- back skirt — cut 2
- right front skirt — cut 1
- left front skirt — cut 1
- center front bodice — cut 2 on fold
- top front bodice — cut 2
- side front bodice — cut 4
- side back bodice — cut 4
- center back bodice — cut 4
- strap — cut 2
- slit reinforcement — cut 1

IMPORTANT! The right front skirt and left front skirt pattern pieces feature the "face" inscription. These pieces should be placed with the blank side onto the right side of fabric when cutting.

IMPORTANT! Don't forget to transfer all pattern markings and notches onto the fabric.

2. From interfacing:

- strap — cut 2
- slit reinforcement — cut 1

The interfacing strips should be cut on the straight grain (parallel to the selvedge).

SEAM ALLOWANCES

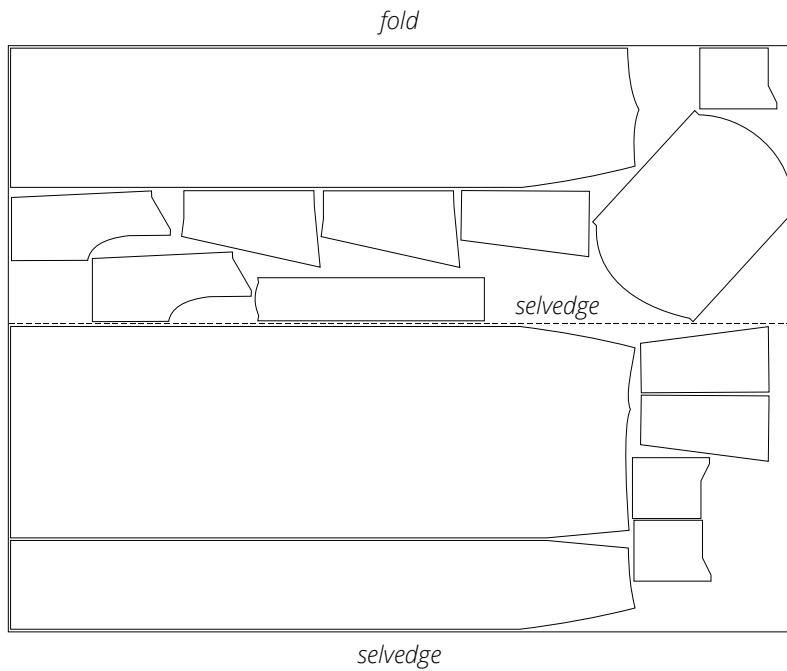
All pattern pieces include seam allowances as follows:

- garment hem allowance — 3 cm (1 1/8")
- all other edges — 1 cm (3/8")

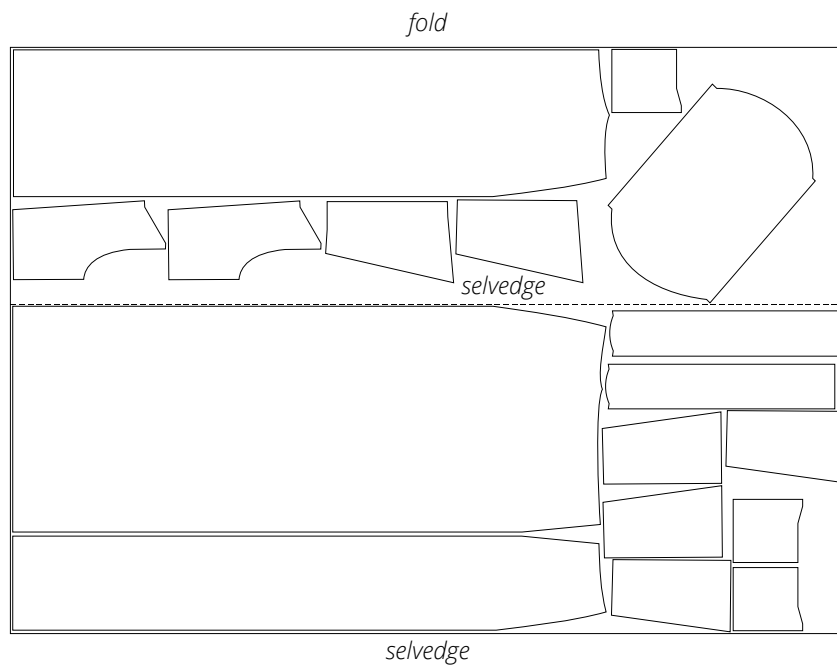
Take this into account when laying out pattern pieces on the fabric.

CUTTING LAYOUT

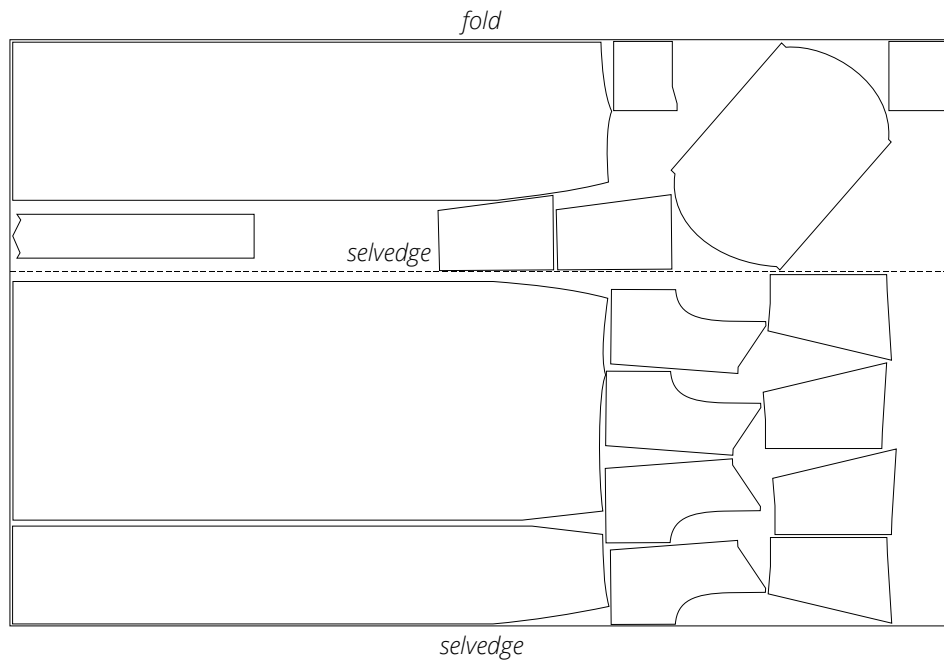
Main fabric, 140 cm (55") wide, with a directional print/nap, cut on a partial fold, for size 34 in all heights



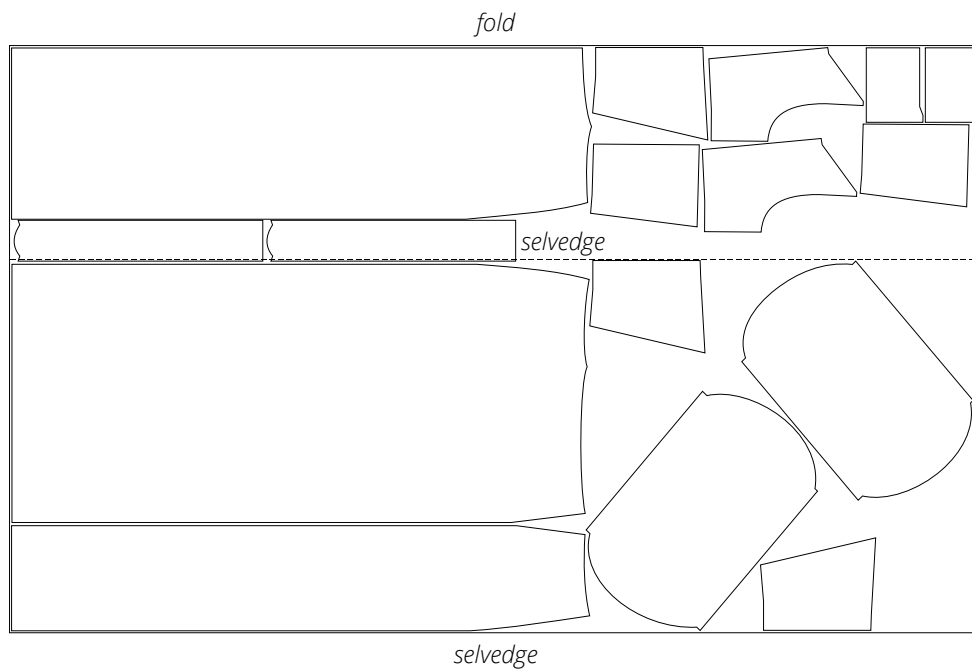
Main fabric, 140 cm (55") wide, with a directional print/nap, cut on a partial fold, for sizes 36–38 in all heights



Main fabric, 140 cm (55") wide, with a directional print/nap,
cut on a partial fold, for sizes 40–42 in all heights

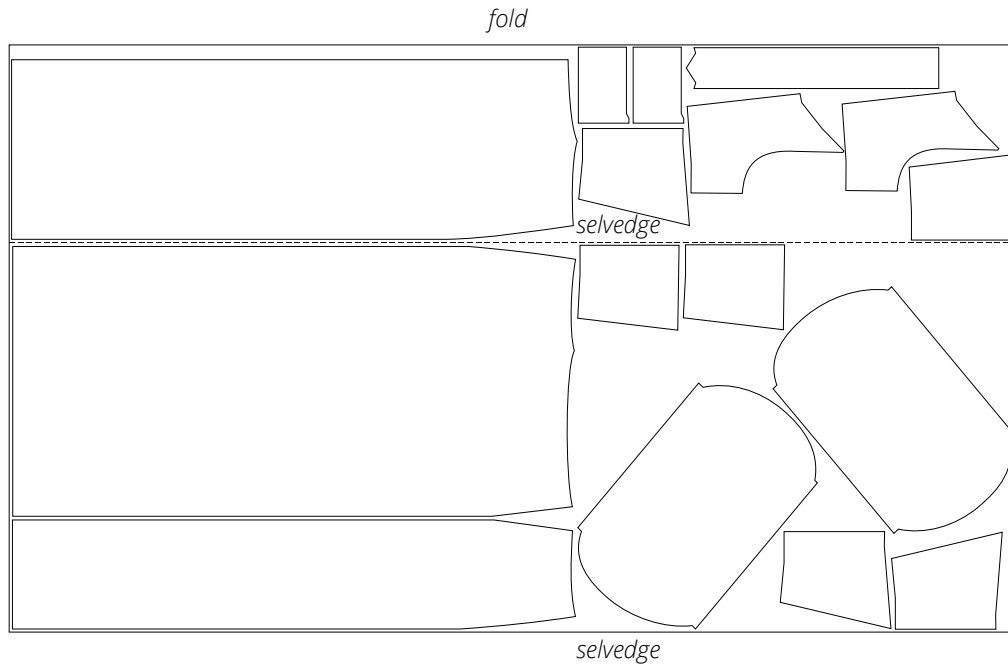


Main fabric, 140 cm (55") wide, with a directional print/nap,
cut on a partial fold, for sizes 44–48 in all heights

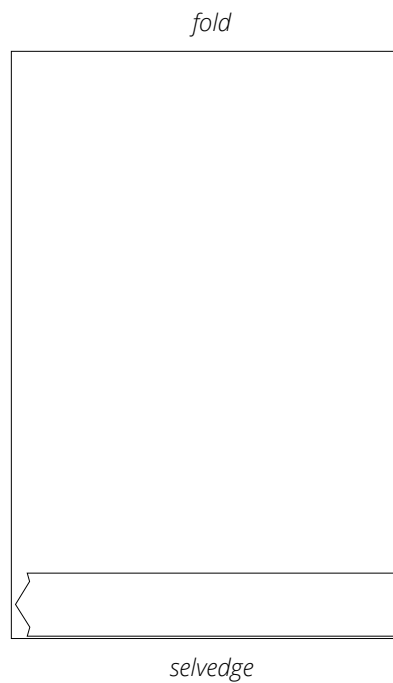


Important! Cut the strap piece out of the leftover fabric.

Main fabric, 140 cm (55") wide, with a directional print/nap,
cut on a partial fold, for sizes 50–52 in all heights



Interfacing, 140 cm (55") wide,
cut on fold, for all sizes in all heights



READY? LET'S GET SEWING!



The photo shows the top front bodice piece from the right side.



Machine-stitch, backstitching at the beginning and end of the seam.
Press the seams flat.



Place the assembled outer and inner bodice pieces right sides together. Align the shaped front edges, match the princess seams, and pin.