

FROM THE FOUNDER OF THE #VIKISEWS BRAND

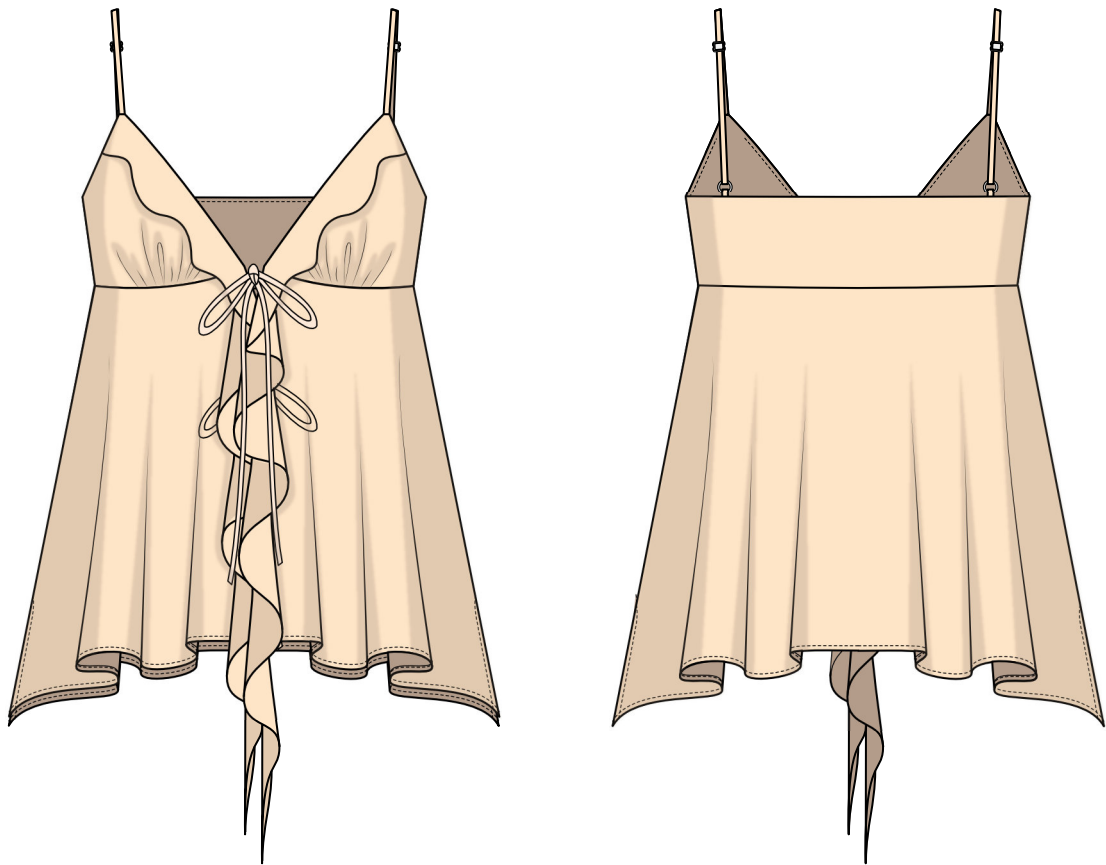


Back in 2016, when I was working on my first set of sewing instructions, I was trying to write them in such a way that even a complete beginner could easily understand and use them to create their very first garment. These instructions laid the foundation for the Vikisews brand, its vision and its mission. I wanted to create modern patterns with the utmost detailed and clear instructions.

Now, with each new collection we are constantly improving our instructions, amending them and adding more relevant details. By the time the final product reaches you, our drafters, correctors, and editors would have spent weeks perfecting every word and every photograph. If you compile a few of our instructions together, you will get a sewing manual that will assist you in sewing all kinds of garments at any difficulty level.

And I would be very happy if these instructions helped you to turn your hobby into a lifelong passion... Enjoy the process! Create your ultimate dream wardrobe! Wear your garments proudly for years to come!

If you have any questions, please contact us at info@vikisews.com — we are always there to help.



JAYA PATTERN DESCRIPTION

Jaya is a semi-fitted top. The front features bust darts transferred into gathers. The front neckline is finished with ruffles. The open-front bottom part of the top is flared. The top has adjustable straps and fastens with ties. Jaya is below-waist length.



IMPORTANT!

The contents of this pattern are copyright protected and belong exclusively to Vikisews. You may use Vikisews patterns for personal use. It is prohibited to share Vikisews patterns and instructions with third parties, as well as to publish patterns and instructions online for public access. **Non-compliance with the mentioned rules is a violation of the US copyright law and may result in civil liability and criminal prosecution.**

You may use Vikisews patterns for commercial use, to sew custom-made garments and/or create fashion collections, on the condition that the patterns are solely used in a manufacturing setting and are not further shared with individuals.

TOTAL EASE ALLOWANCE

	Bust ease (estimated)	Waistline ease
cm	0	58.4–28.2
inches	0	23–11 1/8

GARMENT LENGTH

Height, cm	Back length from waist down (estimated), cm	Height, ft	Back length from waist down (estimated), in
1 (154–160)	15.3–17	1 (5'1"–5'3")	6–6 3/4
2 (162–168)	17.3–18.9	2 (5'4"–5'6")	6 3/4–7 1/2
3 (170–176)	19.4–20.9	3 (5'7"–5'9")	7 5/8–8 1/4
4 (178–184)	21.5–23.2	4 (5'10"–6'1")	8 1/2–9 1/8

SUGGESTED FABRIC

To sew this top, choose dress-weight fabrics with the following properties: medium weight, pliable, soft, non-stretch or low-stretch. The fiber content can include natural fibers, artificial fibers, blends, or synthetics.

The following fabrics are recommended: batiste, dress-weight viscose, crepe de chine, chiffon, natural silk, artificial silk.

Attention! We do not recommend stretchy knit fabrics or heavyweight fabrics.

The top in the photo is made of silk. The fabric is medium weight, pliable, and low-stretch. The fiber content is 100% silk. The fabric weight is 130 g/m².

FABRIC AND NOTIONS REQUIREMENTS

1. Main fabric, 140 cm wide, with a directional print/nap, in meters:

Height, cm	Size									
	34	36	38	40	42	44	46	48	50	52
1 (154–160)	0.85	0.9	0.9	0.95	1	1.1	1.2	1.2	1.2	1.2
2 (162–168)	0.95	0.95	1	1	1.1	1.2	1.2	1.25	1.3	1.3
3 (170–176)	1	1.05	1.05	1.1	1.2	1.25	1.25	1.3	1.3	1.35
4 (178–184)	1.1	1.15	1.15	1.2	1.25	1.3	1.35	1.35	1.35	1.4

Main fabric, 55" wide, with a directional print/nap, in yards:

Height, ft	Size									
	34	36	38	40	42	44	46	48	50	52
1 (5'1"–5'3")	7/8	1	1	1	1 1/8	1 1/4	1 1/4	1 1/4	1 1/4	1 1/4
2 (5'4"–5'6")	1	1	1 1/8	1 1/8	1 1/4	1 1/4	1 1/4	1 3/8	1 3/8	1 3/8
3 (5'7"–5'9")	1 1/8	1 1/8	1 1/8	1 1/4	1 1/4	1 3/8	1 3/8	1 3/8	1 3/8	1 1/2
4 (5'10"–6'1")	1 1/4	1 1/4	1 1/4	1 1/4	1 3/8	1 3/8	1 1/2	1 1/2	1 1/2	1 1/2

IMPORTANT! When purchasing fabric, please account for shrinkage and buy 5% more than required.

- Two strap rings, 8 mm (just under 3/8") in diameter
- Two strap slide adjusters, 1 cm (3/8") wide
- Matching thread — 2 spools

TOOLS AND EQUIPMENT

- sewing machine for construction
- loop turner

PATTERN PIECES LIST

1. From main fabric:

- front yoke — cut 4
- back yoke — cut 2
- front — cut 2
- back — cut 1
- front ruffle — cut 2
- strap + ring tab — cut 2
- tie — cut 4

***IMPORTANT!** Don't forget to transfer all pattern markings and notches onto the fabric.*

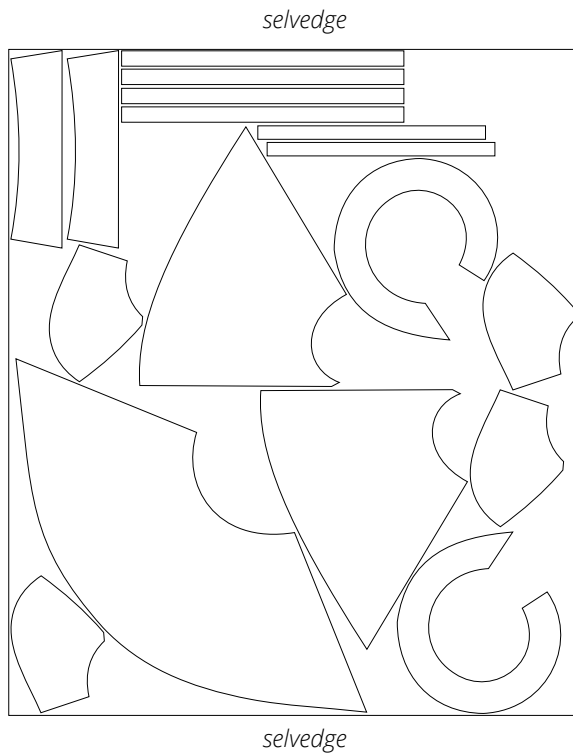
SEAM ALLOWANCES

All pattern pieces include 1 cm (3/8") seam allowances.

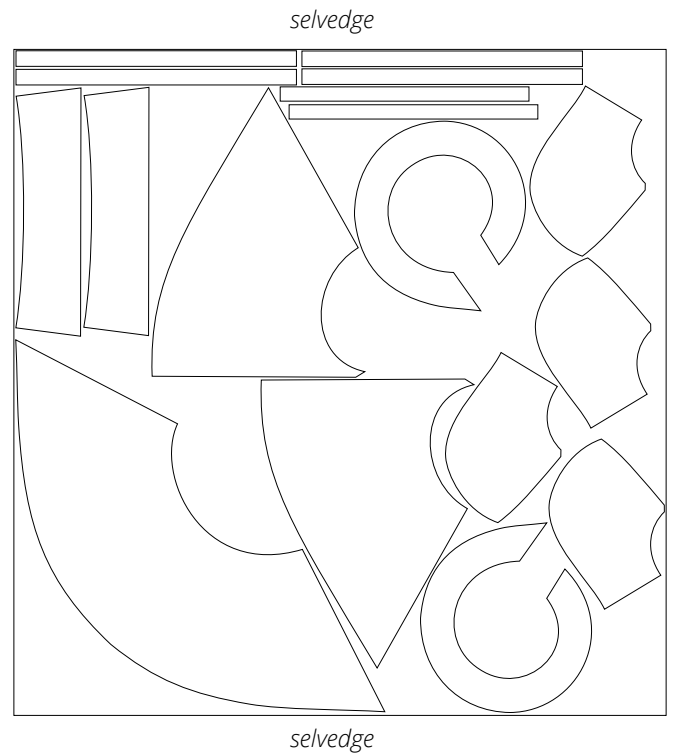
Take this into account when laying out pattern pieces on the fabric.

CUTTING LAYOUT

Main fabric, 140 cm (55") wide, with a directional print/nap, cut on a single layer, for sizes 34–44 in height 1, sizes 34–42 in height 2, and sizes 34–40 in heights 3–4



Main fabric, 140 cm (55") wide, with a directional print/nap, cut on a single layer, for sizes 46–52 in height 1, sizes 44–52 in height 2, and sizes 42–52 in heights 3–4



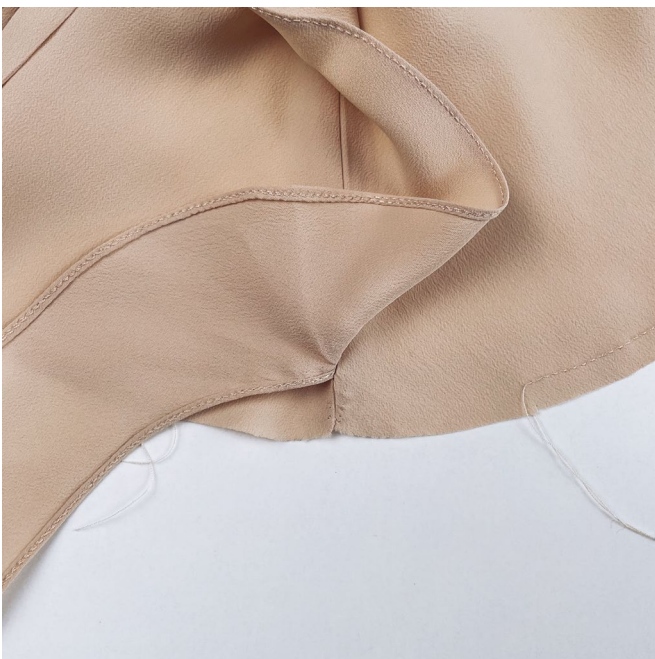
READY? LET'S GET SEWING!



Place the strap to the right side of the assembled outer yoke piece. Align the edges, match the notches, and pin.



Place the assembled outer and inner yoke pieces right sides together. Align the top edges, match the notches and seams, and pin.



Machine-stitch, backstitching at the beginning and end of the seam.

Important! The ruffle piece should not reach the bottom seam allowance on the yoke.