

# FROM THE FOUNDER OF THE #VIKISEWS BRAND

---

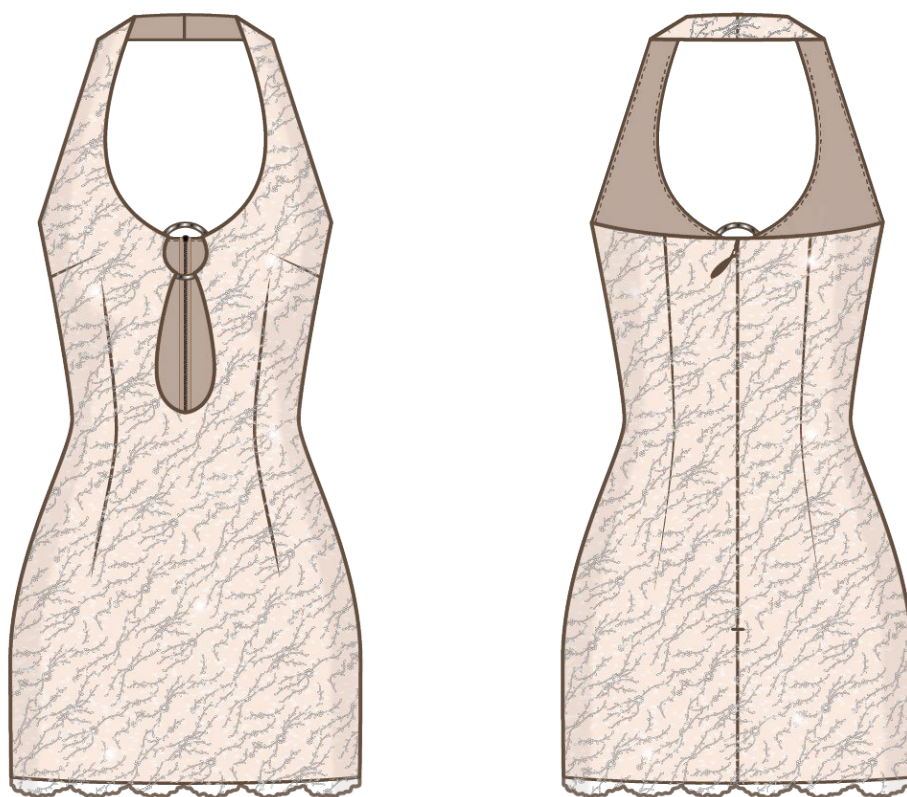


Back in 2016, when I was working on my first set of sewing instructions, I was trying to write them in such a way that even a complete beginner could easily understand and use them to create their very first garment. These instructions laid the foundation for the Vikisews brand, its vision and its mission. I wanted to create modern patterns with the utmost detailed and clear instructions.

Now, with each new collection we are constantly improving our instructions, amending them and adding more relevant details. By the time the final product reaches you, our drafters, correctors, and editors would have spent weeks perfecting every word and every photograph. If you compile a few of our instructions together, you will get a sewing manual that will assist you in sewing all kinds of garments at any difficulty level.

And I would be very happy if these instructions helped you to turn your hobby into a lifelong passion... Enjoy the process! Create your ultimate dream wardrobe! Wear your garments proudly for years to come!

If you have any questions, please contact us at [info@vikisews.com](mailto:info@vikisews.com) — we are always there to help.



## ALZIRA PATTERN DESCRIPTION

---

Alzira is a close-fitting dress with an accentuated waist and no waist seam. The dress is made of two types of fabric. The top layer is made of mesh embellished with seed beads, bugle beads, pearls, and sequins. The front of the dress is fitted with bust darts transferred to the side seams, as well as with waist darts. The back is fitted with waist darts and a center seam. The front features two oval cutouts connected with a decorative ring at the top. The V-shaped neckline transitions into a halter-style grown-on strap. The dress fastens with an invisible zipper and a hook-and-eye closure in the center back seam. Alzira is above-knee length.



## IMPORTANT!

---

The contents of this pattern are copyright protected and belong exclusively to Vikisews. You may use Vikisews patterns for personal use. It is prohibited to share Vikisews patterns and instructions with third parties, as well as to publish patterns and instructions online for public access. **Non-compliance with the mentioned rules is a violation of the US copyright law and may result in civil liability and criminal prosecution.**

You may use Vikisews patterns for commercial use, to sew custom-made garments and/or create fashion collections, on the condition that the patterns are solely used in a manufacturing setting and are not further shared with individuals.

# TOTAL EASE ALLOWANCE

	Bust ease (estimated)	Waistline ease	Hipline ease
cm	-5.5 to -2.8	-0.3 to 0.7	1.7 to 2.7
inches	-2 1/8 to -1 1/8	-1/8 to 1/4	5/8 to 1 1/8

# GARMENT LENGTH

Height, cm	Back length from waist down, cm	Height, ft	Back length from waist down, in
1 (154–160)	34.9–38.5	1 (5'1"–5'3")	13 3/4–15 1/8
2 (162–168)	37.9–41.5	2 (5'4"–5'6")	14 7/8–16 3/8
3 (170–176)	40.9–44.5	3 (5'7"–5'9")	16 1/8–17 1/2
4 (178–184)	43.9–47.5	4 (5'10"–6'1")	17 1/4–18 3/4

# SUGGESTED FABRIC

To sew this dress, you will need several types of fabric, each layer being made of different fabric type.

For the outer dress layer, choose embellished fabrics with the following properties:

- flexible, soft, with a mesh structure, embellished with beads, sequins, and seed beads
- the fiber content can include synthetics (polyester)

The following fabrics are recommended: beaded mesh fabric.

For the inner dress layer, choose dress-weight fabrics with the following properties: lightweight to medium weight, structured, low-stretch. The fiber content can include natural fibers, artificial fibers, blends, or synthetics.

The following fabrics are recommended: satin, crepe satin, dress-weight silk.

**Attention!** We do not recommend soft and stretchy fabrics (chiffon, stretch lace).

The dress in the photo is made of satin. The fabric is medium weight, structured, and low-stretch. The fiber content is 96% polyester and 4% elastane. The fabric weight is 160 g/m².

The outer dress layer is made of mesh embellished with beads, pearls, and sequins. The fiber content is 100% polyester.

# FABRIC AND NOTIONS REQUIREMENTS

1. Main fabric 1 (beaded mesh), 140 cm wide, cut in one direction, in meters:

Height, cm	Size		
	34-40	42-48	50-52
1 (154-160)	0.9	0.95	1
2 (162-168)	0.95	1	1.05
3 (170-176)	1	1.05	1.05
4 (178-184)	1.05	1.1	1.1

Main fabric 1 (beaded mesh), 55" wide, cut in one direction, in yards:

Height, ft	Size		
	34-40	42-48	50-52
1 (5'1"-5'3")	1	1	1 1/8
2 (5'4"-5'6")	1	1 1/8	1 1/8
3 (5'7"-5'9")	1 1/8	1 1/8	1 1/8
4 (5'10"-6'1")	1 1/8	1 1/4	1 1/4

**IMPORTANT!** Since the mesh pattern repeat can vary in size, and the pattern can run across the grain, it is impossible to place paper pattern pieces close to each other during the layout. Additionally, in most cases, the beaded section is narrower than the mesh fabric width, so both sides of the fabric along the selvages feature no embellishments. To avoid extra expenses, we recommend cutting out the paper pattern pieces in advance and taking them to the fabric store so that you can figure out the exact fabric requirements on the spot.

2. Main fabric 2 (satin), 140 cm wide, with a directional print/nap, in meters:

Height, cm	Size									
	34	36	38	40	42	44	46	48	50	52
1 (154-160)	0.85	0.9	0.95	0.95	1	1.05	1.1	1.15	1.2	1.2
2 (162-168)	0.9	0.95	0.95	1	1.05	1.1	1.15	1.2	1.2	1.25
3 (170-176)	0.95	1	1	1.05	1.1	1.1	1.15	1.2	1.25	1.3
4 (178-184)	1	1	1.05	1.1	1.1	1.15	1.2	1.25	1.3	1.35

Main fabric 2 (satin), 55" wide, with a directional print/nap, in yards:

Height, ft	Size									
	34	36	38	40	42	44	46	48	50	52
1 (5'1"-5'3")	7/8	1	1	1	1 1/8	1 1/8	1 1/4	1 1/4	1 1/4	1 1/4
2 (5'4"-5'6")	1	1	1	1 1/8	1 1/8	1 1/4	1 1/4	1 1/4	1 1/4	1 3/8
3 (5'7"-5'9")	1	1 1/8	1 1/8	1 1/8	1 1/4	1 1/4	1 1/4	1 1/4	1 3/8	1 3/8
4 (5'10"-6'1")	1 1/8	1 1/8	1 1/8	1 1/4	1 1/4	1 1/4	1 1/4	1 3/8	1 3/8	1 1/2

3. Stitched bias-cut fusible stay tape with stitch reinforcement, 1 cm (3/8") wide — 2.5 m (2 3/4 yd)
4. One invisible zipper, 40 cm (15 3/4") long, for all sizes in all heights
5. One hook-and-eye closure
6. One metal decorative split ring with a 4–4.5 cm (1 5/8–1 3/4") inner diameter
7. Matching thread — 5 spools (1 spool for the sewing machine + 4 spools for the overlocker)

**IMPORTANT!** When purchasing fabric, please account for shrinkage and buy 5% more than required.

## TOOLS AND EQUIPMENT

- sewing machine for construction
- overlocker for finishing raw edges. This may be replaced with a stretch overlock stitch or a zigzag stitch on the sewing machine (overlock or zigzag stitch width 2–3 mm, stitch length 2.5 mm)
- one-sided foot for the sewing machine to attach the zipper and join the pieces of beaded mesh fabric
- size 70–80 sewing machine needles
- cutting mat and hammer for crashing beads on the seam allowances of the outer layer pieces

## PATTERN PIECES LIST

### 1. From main fabric 1 (beaded mesh):

- front — cut 1 on fold
- back — cut 2

### 2. From main fabric 2 (satin):

- front — cut 1 on fold
- back — cut 2
- top edge binding — cut 2
- neck binding — cut 1
- cutout binding — cut 1
- ring casing — cut 1 (2 pieces)

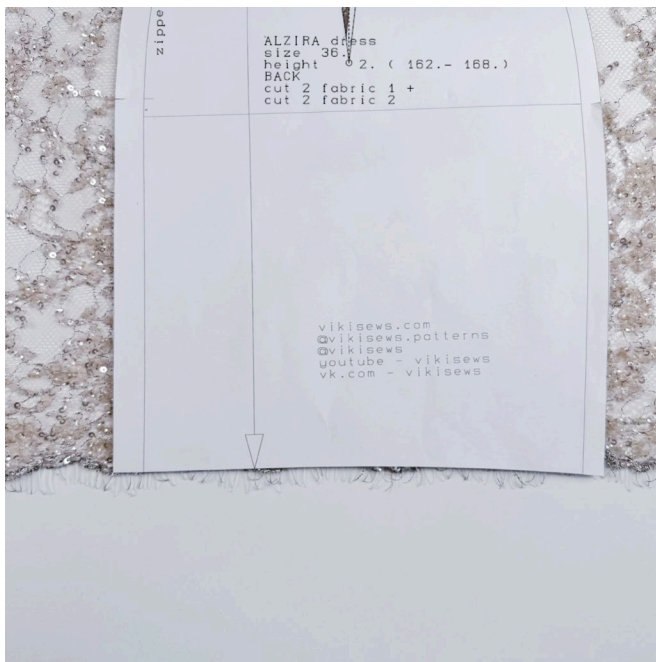
**IMPORTANT!** Don't forget to transfer all pattern markings and notches onto the fabric.

## SEAM ALLOWANCES

All pattern pieces include seam allowances as follows:

- garment hem allowance — 2.5 cm (1")
- all other edges — 1 cm (3/8")

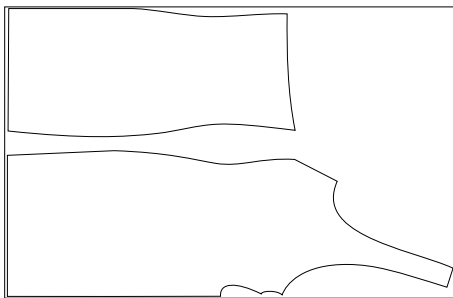
Take this into account when laying out pattern pieces on the fabric.



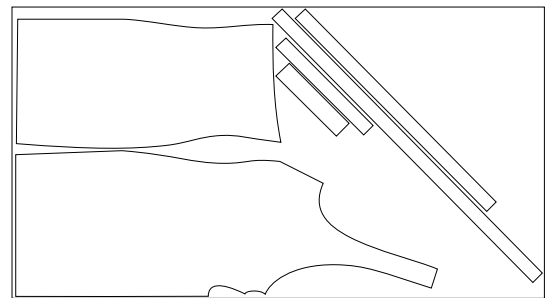
**IMPORTANT!** When cutting the front and back pieces from beaded mesh with a scalloped edge, you need to trim off the hem allowance and position the pattern so that the hemline aligns exactly with the highest point of the scallop.

## CUTTING LAYOUT

Main fabric 1 (beaded mesh), 140 cm (55") wide, cut in one direction and on fold, for all sizes in all heights



Main fabric 2 (satin), 140 cm (55") wide, with a directional print/nap, cut on fold, for all sizes in all heights



**Attention!** Cut one each of the neck binding, cutout binding, and ring casing pieces.

## READY? LET'S GET SEWING!





Match up and pin the waist and bust dart legs on the inner (satin) front piece.



Match up and pin the waist dart legs on the inner (satin) back piece.



Machine-stitch the darts, backstitching at the raw edge only.

Tie the thread tails at the dart point into knots and hide them inside the dart bulk using a needle.