

FROM THE FOUNDER OF THE #VIKISEWS BRAND

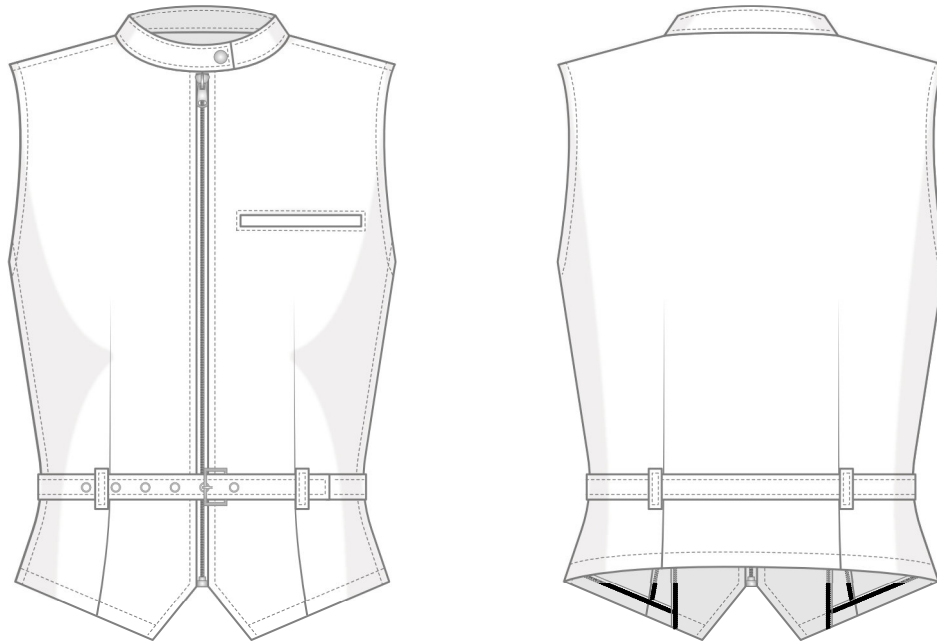


Back in 2016, when I was working on my first set of sewing instructions, I was trying to write them in such a way that even a complete beginner could easily understand and use them to create their very first garment. These instructions laid the foundation for the Vikisews brand, its vision and its mission. I wanted to create modern patterns with the utmost detailed and clear instructions.

Now, with each new collection we are constantly improving our instructions, amending them and adding more relevant details. By the time the final product reaches you, our drafters, correctors, and editors would have spent weeks perfecting every word and every photograph. If you compile a few of our instructions together, you will get a sewing manual that will assist you in sewing all kinds of garments at any difficulty level.

And I would be very happy if these instructions helped you to turn your hobby into a lifelong passion... Enjoy the process! Create your ultimate dream wardrobe! Wear your garments proudly for years to come!

If you have any questions, please contact us at info@vikisews.com — we are always there to help.



RANETTE PATTERN DESCRIPTION

Ranette is a semi-fitted vest with an accentuated waist. The front and back feature waist darts. There is a welt pocket on the left front. The stand collar closes with a metal snap. The collar, shoulder seams, side seams, hemline, and armholes feature decorative topstitching. The vest fastens with a separating metal zipper at the center front and has topstitched belt loops at the front and back waistline for the detachable belt. The center front edges are shaped at the bottom. Ranette is above-hip length.



IMPORTANT!

The contents of this pattern are copyright protected and belong exclusively to Vikisews. You may use Vikisews patterns for personal use. It is prohibited to share Vikisews patterns and instructions with third parties, as well as to publish patterns and instructions online for public access. **Non-compliance with the mentioned rules is a violation of the US copyright law and may result in civil liability and criminal prosecution.**

You may use Vikisews patterns for commercial use, to sew custom-made garments and/or create fashion collections, on the condition that the patterns are solely used in a manufacturing setting and are not further shared with individuals.

TOTAL EASE ALLOWANCE

	Bust ease	Waistline ease
cm	8.1–1.7	18–14.5
inches	3 1/4–5/8	7 1/8–5 3/4

GARMENT LENGTH

Height, cm	Back length, cm	Height, ft	Back length, in
1 (154–160)	47.4–51.6	1 (5'1"–5'3")	18 5/8–20 3/8
2 (162–168)	49.9–54	2 (5'4"–5'6")	19 5/8–21 1/4
3 (170–176)	52.3–55.1	3 (5'7"–5'9")	20 5/8–21 3/4
4 (178–184)	54.8–56.1	4 (5'10"–6'1")	21 5/8–22 1/8

SUGGESTED FABRIC

To sew this vest, choose medium-weight, non-stretch or low-stretch fabrics made of natural fibers, artificial fibers, or blends.

The following fabrics are recommended: denim, corduroy, suiting cotton.

For the pocket lining, we recommend using lining fabrics made of artificial fibers, blends, or synthetics.

The vest in the photo is made of denim. The fabric is medium weight and low-stretch. The fiber content is 100% cotton. The fabric weight is 300 g/m².

The fiber content of the lining fabric is 100% cotton. The fabric weight is 100 g/m².

FABRIC AND NOTIONS REQUIREMENTS

1. Main fabric, 140 cm wide, 200–300 g/m², with a directional print/nap, in meters:

Height, cm	Size									
	34	36	38	40	42	44	46	48	50	52
1 (154–160)	0.9	0.95	1	1.05	1.1	1.15	1.2	1.25	1.3	1.35
2 (162–168)	0.9	0.95	1	1.1	1.1	1.15	1.2	1.25	1.3	1.35
3 (170–176)	0.9	0.95	1	1.15	1.15	1.15	1.2	1.25	1.35	1.35
4 (178–184)	0.9	0.95	1	1.15	1.15	1.2	1.2	1.25	1.35	1.35

Main fabric, 55" wide, 200–300 g/m², with a directional print/nap, in yards:

Height, ft	Size						
	34–36	38	40	42–46	48	50	52
1 (5'1"–5'3")	1	1 1/8	1 1/8	1 1/4	1 3/8	1 3/8	1 1/2
2 (5'4"–5'6")	1	1 1/8	1 1/4	1 1/4	1 3/8	1 3/8	1 1/2
3 (5'7"–5'9")	1	1 1/8	1 1/4	1 1/4	1 3/8	1 1/2	1 1/2
4 (5'10"–6'1")	1	1 1/8	1 1/4	1 1/4	1 3/8	1 1/2	1 1/2

2. Lining fabric, 140 cm wide, 90–120 g/m², in meters:

Height, cm	Size				
	34–38	40	42–48	50	52
1 (154–160)	0.4	0.4	0.45	0.45	0.5
2 (162–168)	0.4	0.4	0.45	0.45	0.5
3 (170–176)	0.4	0.45	0.45	0.5	0.5
4 (178–184)	0.4	0.45	0.45	0.5	0.5

Lining fabric, 55" wide, 90–120 g/m², in yards:

Height, ft	Size		
	34–38	40	42–52
1 (5'1"–5'3")	3/8	3/8	1/2
2 (5'4"–5'6")	3/8	3/8	1/2
3 (5'7"–5'9")	3/8	1/2	1/2
4 (5'10"–6'1")	3/8	1/2	1/2

IMPORTANT! When purchasing fabric, please account for shrinkage and buy 5% more than required.

3. Lightweight interfacing, knit or woven, 140 cm (55") wide, 30 g/m², for all heights:

Size	34	36	38	40	42	44	46	48	50	52
Meters	0.9	0.95	1	1.05	1.1	1.15	1.2	1.25	1.3	1.35
Yards	1	1	1 1/8	1 1/8	1 1/4	1 1/4	1 1/4	1 3/8	1 3/8	1 1/2

4. Stitched straight-grain fusible stay tape, 1 cm (3/8") wide — 1.15–1.3 m (1 1/4–1 3/8 yd)

5. One separating metal zipper, 45–52 cm (17 3/4–20 1/2") long

6. Six metal grommets, 5 mm (just under 1/4") in diameter

7. One set-in snap, 12.5 mm (1/2") in diameter

8. One metal buckle, 2.5 cm (1") wide

9. Matching thread — 5 spools (1 spool for the sewing machine + 4 spools for the overlocker)

10. Matching topstitching thread (for example, Madeira No. 35) — 1 spool

TOOLS AND EQUIPMENT

- sewing machine for construction
- overlocker for finishing raw edges. This may be replaced with a stretch overlock stitch or a zigzag stitch on the sewing machine (overlock or zigzag stitch width 2–3 mm, stitch length 2.5 mm)
- stitch-in-the-ditch foot for the sewing machine (optional)
- buttonhole foot for the sewing machine
- one-sided foot for the sewing machine to attach the zipper
- pliers for installing zipper stoppers
- press tool with a set of molds for installing grommets and snaps, hole puncher

PATTERN PIECES LIST

1. From main fabric:

- front — cut 2
- back — cut 1 on fold
- collar — cut 2
- front facing — cut 2
- pocket welt — cut 1
- pocket lining — cut 1
- belt loop — cut 1 (4 pieces)
- belt — cut 1

2. From lining fabric:

- armscye binding — cut 2
- pocket lining — cut 1

IMPORTANT! Don't forget to transfer all pattern markings and notches onto the fabric.

3. From interfacing:

- front facing — cut 2
- belt — cut 1
- pocket welt — cut 1
- collar — cut 2
- pocket interfacing strip — cut 1

SEAM ALLOWANCES

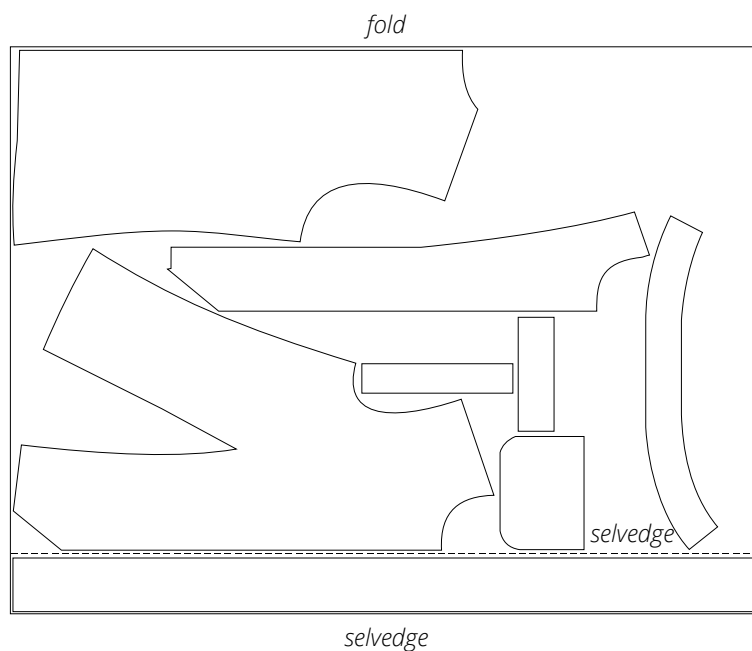
Pattern pieces include the following seam allowances:

- garment hem allowance — 2 cm (3/4")
- pocket lining and welt edges — 1.5 cm (5/8")
- all other edges — 1 cm (3/8")

Take this into account when laying out pattern pieces on the fabric.

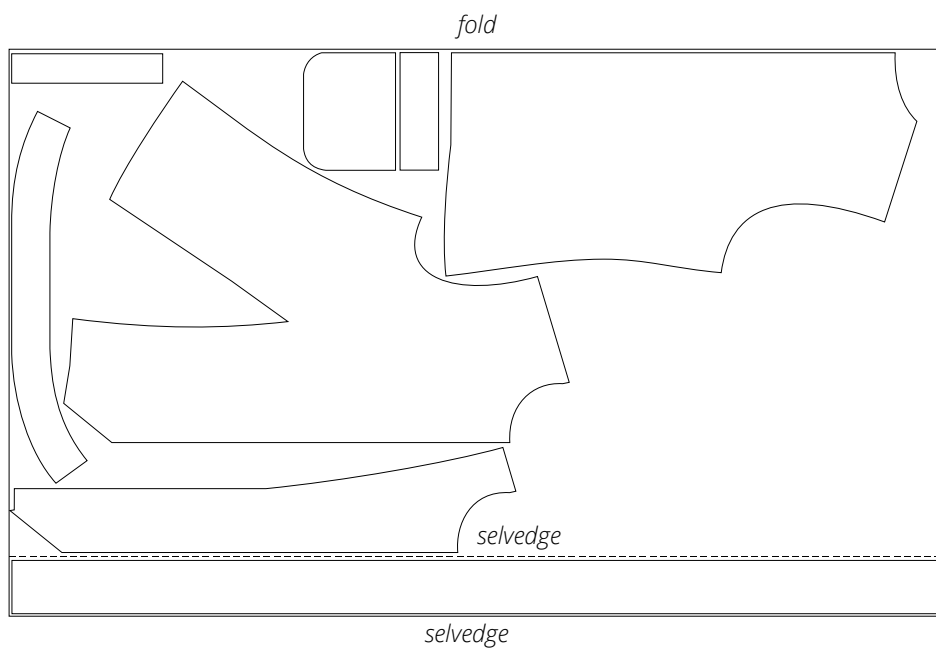
CUTTING LAYOUT

Main fabric, 140 cm (55") wide, with a directional print/nap, cut on a partial fold, for sizes 34–38 in all heights



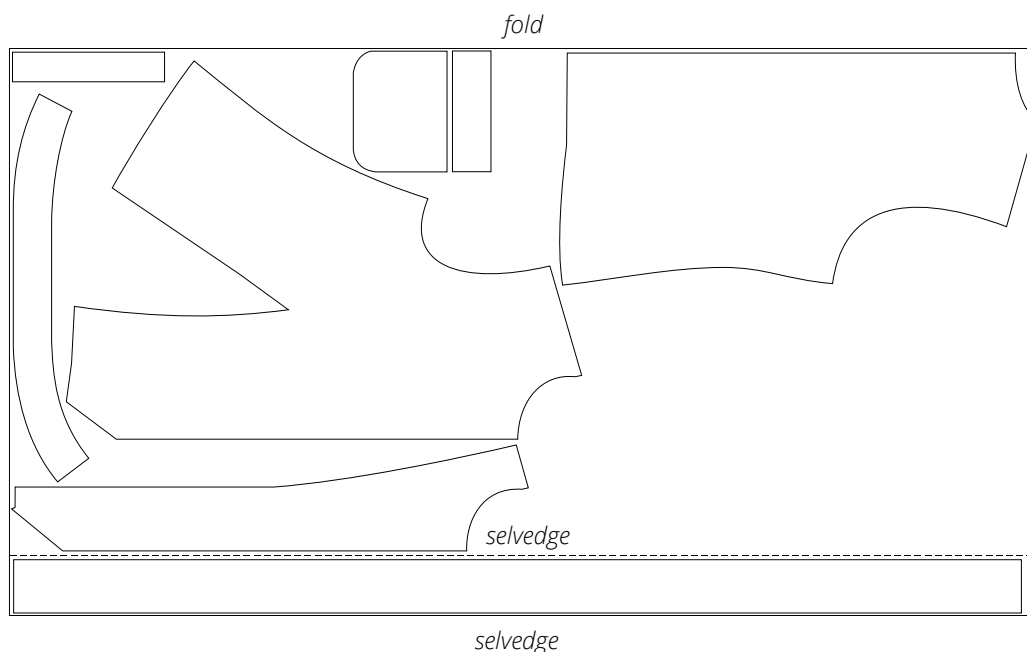
Attention! Cut one each of the belt loop, pocket welt, and pocket lining pieces.

Main fabric, 140 cm (55") wide, with a directional print/nap, cut on a partial fold, for sizes 40–48 in all heights



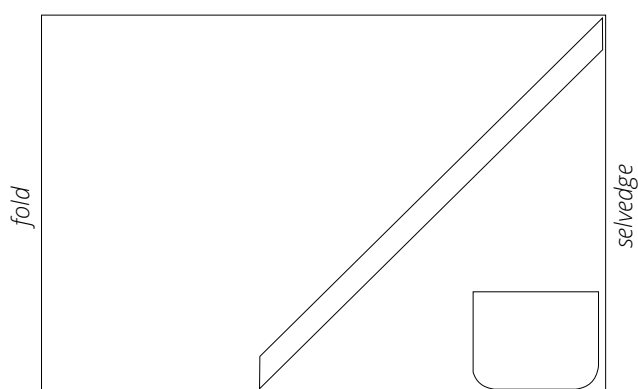
Attention! Cut one each of the belt loop, pocket welt, and pocket lining pieces.

Main fabric, 140 cm (55") wide, with a directional print/nap,
cut on a partial fold, for sizes 50–52 in all heights



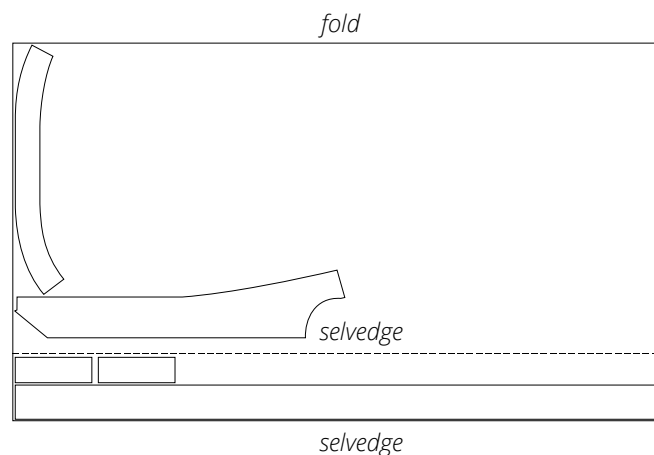
Attention! Cut one each of the belt loop, pocket welt, and pocket lining pieces.

Lining fabric, 140 cm (55") wide,
with a directional print, cut on fold,
for all sizes in all heights



Attention! Cut one pocket lining piece only.

Interfacing, 140 cm (55") wide,
cut on a partial fold, for all sizes
in all heights



READY? LET'S GET SEWING!



Press the dart seam allowances towards the center front.



Using tailor's chalk, transfer the dart lines from the pattern to the wrong side of the back piece.



Match up and pin the dart legs on the wrong side of the back piece.

Machine-stitch, backstitching at the beginning of the seam only. Leave long thread tails at the dart point.