

FROM THE FOUNDER OF THE #VIKISEWS BRAND



Back in 2016, when I was working on my first set of sewing instructions, I was trying to write them in such a way that even a complete beginner could easily understand and use them to create their very first garment. These instructions laid the foundation for the Vikisews brand, its vision and its mission. I wanted to create modern patterns with the utmost detailed and clear instructions.

Now, with each new collection we are constantly improving our instructions, amending them and adding more relevant details. By the time the final product reaches you, our drafters, correctors, and editors would have spent weeks perfecting every word and every photograph. If you compile a few of our instructions together, you will get a sewing manual that will assist you in sewing all kinds of garments at any difficulty level.

And I would be very happy if these instructions helped you to turn your hobby into a lifelong passion... Enjoy the process! Create your ultimate dream wardrobe! Wear your garments proudly for years to come!

If you have any questions, please contact us at info@vikisews.com — we are always there to help.



DEVIKA PATTERN DESCRIPTION

Devika is a close-fitting dress with an accentuated waist. The silhouette is achieved through princess seams at the front and back. The dress features adjustable straps and fastens with an invisible zipper in the left side seam. Devika is above-knee length.



IMPORTANT!

The contents of this pattern are copyright protected and belong exclusively to Vikisews. You may use Vikisews patterns for personal use. It is prohibited to share Vikisews patterns and instructions with third parties, as well as to publish patterns and instructions online for public access. **Non-compliance with the mentioned rules is a violation of the US copyright law and may result in civil liability and criminal prosecution.**

You may use Vikisews patterns for commercial use, to sew custom-made garments and/or create fashion collections, on the condition that the patterns are solely used in a manufacturing setting and are not further shared with individuals.

TOTAL EASE ALLOWANCE

	Bust ease (estimated)	Waistline ease	Hipline ease
cm	0.6–3.5	-1.3–2.7	-0.3–1.7
inches	1/4–1 3/8	-1/2–1 1/8	-1/8–5/8

GARMENT LENGTH

Height, cm	Back length from waist down, cm	Height, ft	Back length from waist down, in
1 (154–160)	37	1 (5'1"–5'3")	14 5/8
2 (162–168)	40	2 (5'4"–5'6")	15 3/4
3 (170–176)	43	3 (5'7"–5'9")	16 7/8
4 (178–184)	46	4 (5'10"–6'1")	18 1/8

SUGGESTED FABRIC

To sew this dress, choose dress-weight and suiting fabrics with the following properties: medium weight, pliable, soft, non-stretch or low-stretch, opaque. The fiber content can include natural fibers, artificial fibers, blends, or synthetics.

The following fabrics are recommended: gabardine, dress-weight denim, suiting, leather, faux leather.

Attention! We do not recommend stretchy knit fabrics and lightweight sheer fabrics (chiffon, organza, stretch lace).

The dress in the photo is made of dress-weight viscose. The fabric is medium weight, soft, and low-stretch. The fiber content is 70% viscose and 30% polyester. The fabric weight is 170 g/m².

FABRIC AND NOTIONS REQUIREMENTS

1. Main fabric, 140 cm wide, with a directional print/nap, in meters:

Height, cm	Size		
	34-44	46-50	52
1 (154-160)	0.85	0.9	1.15
2 (162-168)	0.9	0.95	1.25
3 (170-176)	0.95	1	1.3
4 (178-184)	1	1.05	1.4

Main fabric, 55" wide, with a directional print/nap, in yards:

Height, ft	Size		
	34-44	46-50	52
1 (5'1"-5'3")	7/8	1	1 1/4
2 (5'4"-5'6")	1	1	1 3/8
3 (5'7"-5'9")	1	1 1/8	1 3/8
4 (5'10"-6'1")	1 1/8	1 1/8	1 1/2

IMPORTANT! When purchasing fabric, please account for shrinkage and buy 5% more than required.

2. Lightweight fusible interfacing, knit or woven, 140 cm (55") wide, for all sizes in all heights — 0.25 m (1/4 yd)
3. Stitched bias-cut fusible stay tape with stitch reinforcement, 1 cm (3/8") wide — 2.5 m (2 3/4 yd)
4. One invisible zipper, 50 cm (19 5/8") long, for all sizes in all heights
5. Two strap rings, 8 mm (just under 3/8") in diameter
6. Two strap slide adjusters, 1 cm (3/8") wide
7. Matching thread — 5 spools (1 spool for the sewing machine + 4 spools for the overlocker)

TOOLS AND EQUIPMENT

- sewing machine for construction
- overlocker for finishing raw edges. This may be replaced with a stretch overlock stitch or a zigzag stitch on the sewing machine (overlock or zigzag stitch width 2-3 mm, stitch length 2.5 mm)
- invisible zipper foot for the sewing machine
- one-sided foot for the sewing machine
- loop turner

PATTERN PIECES LIST

1. From main fabric:

- center front — cut 1 on fold
- side front — cut 2
- center back — cut 1 on fold
- side back — cut 2
- strap + ring tab — cut 2
- front facing — cut 1
- back facing — cut 1

***IMPORTANT!** The pattern pieces that have the "face" inscription should be placed with the blank side onto the right side of fabric when cutting.*

***IMPORTANT!** Don't forget to transfer all pattern markings and notches onto the fabric.*

2. From interfacing:

- front facing — cut 1
- back facing — cut 1

SEAM ALLOWANCES

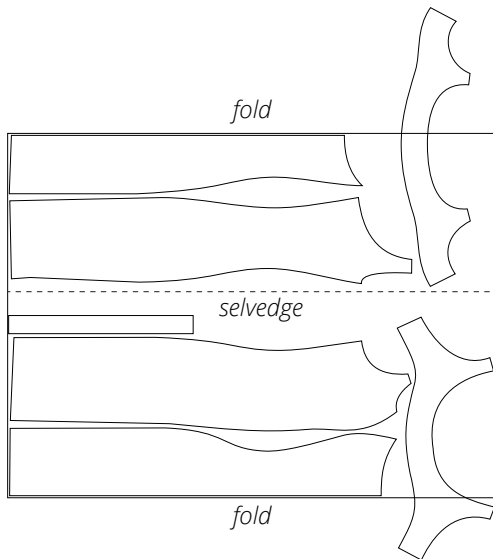
All pattern pieces include seam allowances as follows:

- garment hem allowance — 2 cm (3/4")
- all other edges — 1 cm (3/8")

Take this into account when laying out pattern pieces on the fabric.

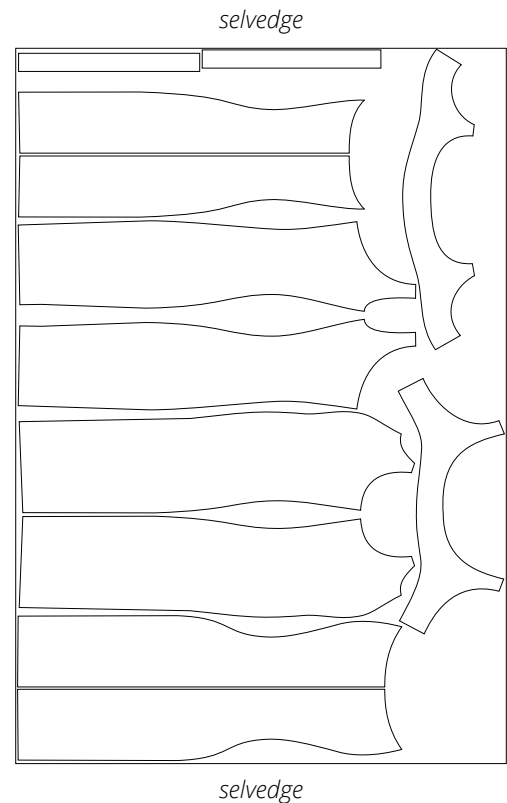
CUTTING LAYOUT

Main fabric, 140 cm (55") wide, with a directional print/nap, cut with two folds, for sizes 34–42 in all heights

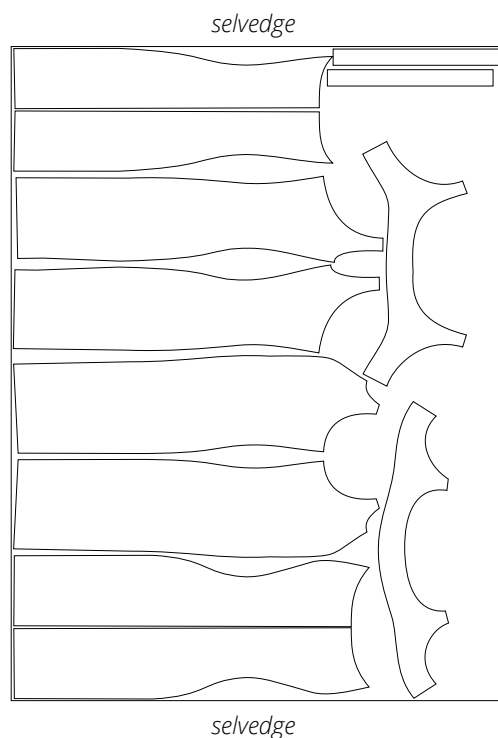


Attention! Cut one each of the front facing and back facing pieces on a single layer out of the leftover fabric.

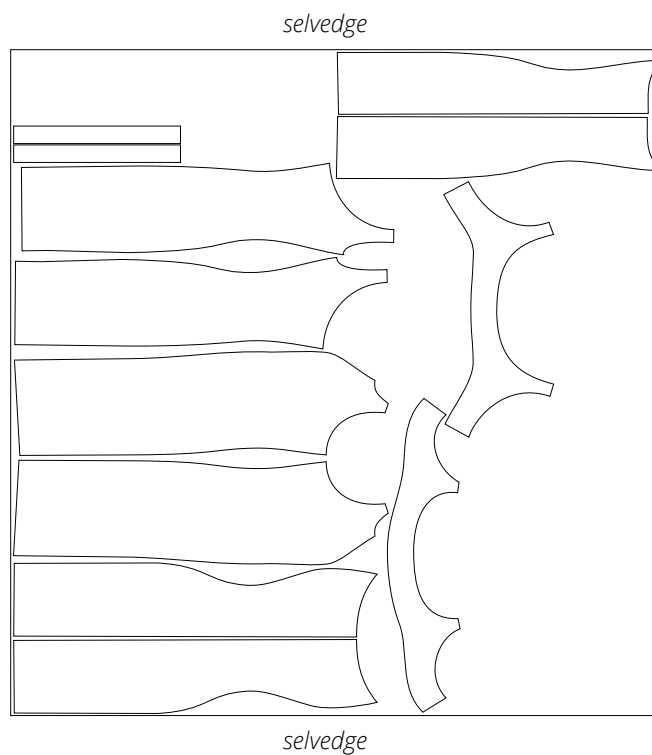
Main fabric, 140 cm (55") wide, with a directional print/nap, cut on a single layer, for sizes 44–46 in all heights



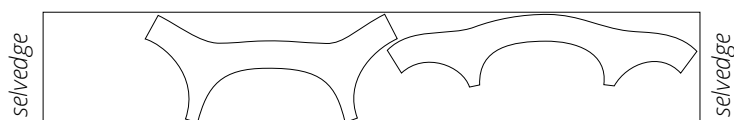
Main fabric, 140 cm (55") wide, with a directional print/nap, cut on a single layer, for sizes 48-50 in all heights



Main fabric, 140 cm (55") wide, with a directional print/nap, cut on a single layer, for size 52 in all heights



Interfacing, 140 cm (55") wide, cut on a single layer in one direction, for all sizes in all heights



READY? LET'S GET SEWING!



Place the center front and side front pieces right sides together. Align the princess seam edges, match the notches, and pin.



Place the center back and side back pieces right sides together. Align the princess seam edges, match the notches, and pin.



Machine-stitch the princess seams on the front and back pieces, backstitching at the beginning and end of each seam. Overlock the princess seam allowances, with the side front and side back pieces facing up. Press the seams flat.