

FROM THE FOUNDER OF THE #VIKISEWS BRAND



Back in 2016, when I was working on my first set of sewing instructions, I was trying to write them in such a way that even a complete beginner could easily understand and use them to create their very first garment. These instructions laid the foundation for the Vikisews brand, its vision and its mission. I wanted to create modern patterns with the utmost detailed and clear instructions.

Now, with each new collection we are constantly improving our instructions, amending them and adding more relevant details. By the time the final product reaches you, our drafters, correctors, and editors would have spent weeks perfecting every word and every photograph. If you compile a few of our instructions together, you will get a sewing manual that will assist you in sewing all kinds of garments at any difficulty level.

And I would be very happy if these instructions helped you to turn your hobby into a lifelong passion... Enjoy the process! Create your ultimate dream wardrobe! Wear your garments proudly for years to come!

If you have any questions, please contact us at info@vikisews.com — we are always there to help.



TRUDY PATTERN DESCRIPTION

Trudy is a semi-fitted dress with a straight silhouette and a round neckline. Both the front and the back of the dress feature princess seams trimmed with flounces and lace. The long, voluminous, set-in sleeves are gathered at the sleeve cap and bottom edge. The sleeves are finished with binding cut one with ties. The dress has a center front placket and fastens with buttons and buttonholes. There are shaped slits in the side seams. Trudy is above-knee length.



IMPORTANT!

The contents of this pattern are copyright protected and belong exclusively to Vikisews. You may use Vikisews patterns for personal use. It is prohibited to share Vikisews patterns and instructions with third parties, as well as to publish patterns and instructions online for public access. **Non-compliance with the mentioned rules is a violation of the US copyright law and may result in civil liability and criminal prosecution.**

You may use Vikisews patterns for commercial use, to sew custom-made garments and/or create fashion collections, on the condition that the patterns are solely used in a manufacturing setting and are not further shared with individuals.

TOTAL EASE ALLOWANCE

	Bust ease	Waistline ease	Hipline ease	Upper arm ease
cm	26.1–25.7	37.3	21.4–20.9	24.4–23.4
inches	10 1/4–10 1/8	14 5/8	8 3/8–8 1/4	9 5/8–9 1/4

GARMENT LENGTH, SLEEVE LENGTH

Height, cm	Garment length at center back, cm	Sleeve length including sleeve binding, cm
1 (154–160)	79–80.8	57.2
2 (162–168)	84–85.8	59.2
3 (170–176)	89–90.8	61.2
4 (178–184)	94–95.8	63.2

Height, ft	Garment length at center back, in	Sleeve length including sleeve binding, in
1 (5'1"–5'3")	31 1/8–31 3/4	22 1/2
2 (5'4"–5'6")	33 1/8–33 3/4	23 1/4
3 (5'7"–5'9")	35–35 3/4	24 1/8
4 (5'10"–6'1")	37–37 3/4	24 7/8

SUGGESTED FABRIC

To sew this dress, choose dress-weight fabrics with the following properties:

- medium weight, soft, non-stretch
- the fiber content can include natural fibers (silk, cotton), artificial fibers (viscose), blends (cotton + viscose, cotton + silk, etc.), and synthetics (polyester)
- the following fabrics are recommended: cotton, poplin, shirting, linen.

Attention! We do not recommend using heavyweight, structured fabrics and thin, fluid fabrics with elastane.

The dress in the photo is made of sateen. The fabric is medium weight and non-stretch. The fiber content is 100% cotton. The fabric weight is 120 g/m².

FABRIC AND NOTIONS REQUIREMENTS

1. Main fabric, 140 cm wide, with a directional print/nap, in meters:

Height, cm	Size									
	34	36	38	40	42	44	46	48	50	52
1 (154–160)	3.85	3.9	3.9	3.95	4.05	4.05	4.1	4.1	4.15	4.15
2 (162–168)	4.1	4.1	4.15	4.2	4.3	4.3	4.35	4.35	4.4	4.4
3 (170–176)	4.35	4.35	4.4	4.4	4.55	4.6	4.6	4.65	4.65	4.7
4 (178–184)	4.55	4.6	4.6	4.6	4.75	4.8	4.8	4.85	4.85	4.9

Main fabric, 55" wide, with a directional print/nap, in yards:

Height, ft	Size					
	34–38	40	42–44	46	48–50	52
1 (5'1"–5'3")	4 1/4	4 3/8	4 3/8	4 1/2	4 1/2	4 1/2
2 (5'4"–5'6")	4 1/2	4 5/8	4 3/4	4 3/4	4 3/4	4 3/4
3 (5'7"–5'9")	4 3/4	4 3/4	5	5	5 1/8	5 1/8
4 (5'10"–6'1")	5	5	5 1/4	5 1/4	5 1/4	5 3/8

IMPORTANT! When purchasing fabric, please account for shrinkage and buy 5% more than required.

2. Knit or woven interfacing, 140 cm wide, cut in one direction, in meters:

Height, cm	Size	
	34–46	48–52
1 (154–160)	0.8	0.85
2 (162–168)	0.85	0.9
3 (170–176)	0.9	0.95
4 (178–184)	0.95	1

Knit or woven interfacing, 55" wide, cut in one direction, in yards:

Height, ft	Size	
	34–46	48–52
1 (5'1"–5'3")	7/8	7/8
2 (5'4"–5'6")	7/8	1
3 (5'7"–5'9")	1	1
4 (5'10"–6'1")	1	1 1/8

3. Ten buttons, 1.3 cm (1/2") in diameter.

4. Stitched bias-cut fusible stay tape, for all sizes in all heights — 1.75 m (1 7/8 yd).

5. Lace trim, 5 cm wide, in meters:

Height, cm	Size							
	34	36–38	40	42	44	46–48	50	52
1 (154–160)	4.8	4.8	4.8	4.9	4.9	4.9	4.9	4.95
2 (162–168)	5	5	5.05	5.05	5.1	5.1	5.1	5.15
3 (170–176)	5.2	5.2	5.25	5.25	5.3	5.3	5.35	5.35
4 (178–184)	5.4	5.45	5.5	5.5	5.5	5.55	5.6	5.6

Lace trim, 2" wide, in yards:

Height, ft	Size						
	34	36–38	40	42	44	46–48	50–52
1 (5'1"–5'3")	5 1/4	5 1/4	5 1/4	5 3/8	5 3/8	5 3/8	5 3/8
2 (5'4"–5'6")	5 1/2	5 1/2	5 1/2	5 1/2	5 5/8	5 5/8	5 5/8
3 (5'7"–5'9")	5 5/8	5 5/8	5 3/4	5 3/4	5 3/4	5 3/4	5 7/8
4 (5'10"–6'1")	5 7/8	6	6	6	6	6 1/8	6 1/8

6. Matching thread — 4 spools (1 spool for the sewing machine + 3 spools for the overlocker).

TOOLS AND EQUIPMENT

- sewing machine for construction
- overlocker for finishing raw edges. This may be replaced with a stretch overlock stitch or a zigzag stitch on the sewing machine (overlock or zigzag stitch width 2–3 mm, stitch length 2.5 mm)
- buttonhole foot for the sewing machine
- stitch-in-the-ditch foot for the sewing machine (optional).

PATTERN PIECES LIST

1. From main fabric:

- center front — cut 2
- side front — cut 2
- center back — cut 1 on fold
- side back — cut 2
- sleeve — cut 2
- lower flounce — cut 2
- upper flounce — cut 2
- placket — cut 2
- neckband — cut 1
- sleeve placket binding — cut 2
- sleeve hem binding + ties — cut 2.

2. From interfacing:

- placket — cut 2.

***IMPORTANT!** Don't forget to transfer all pattern markings and notches onto the fabric.*

SEAM ALLOWANCES

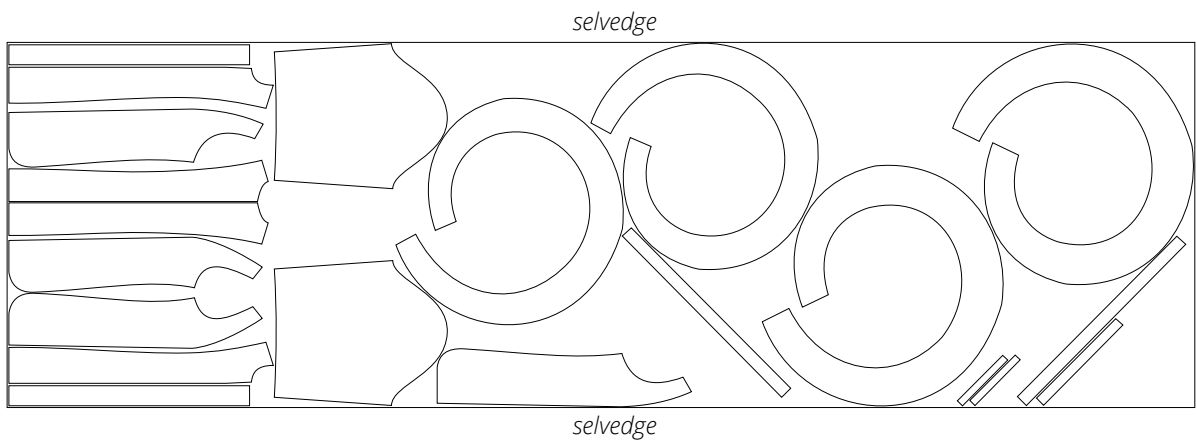
All pattern pieces include seam allowances as follows:

- garment hem allowance — 1.5 cm (5/8")
- flounce hem allowance — 1.5 cm (5/8")
- all other edges — 1 cm (3/8").

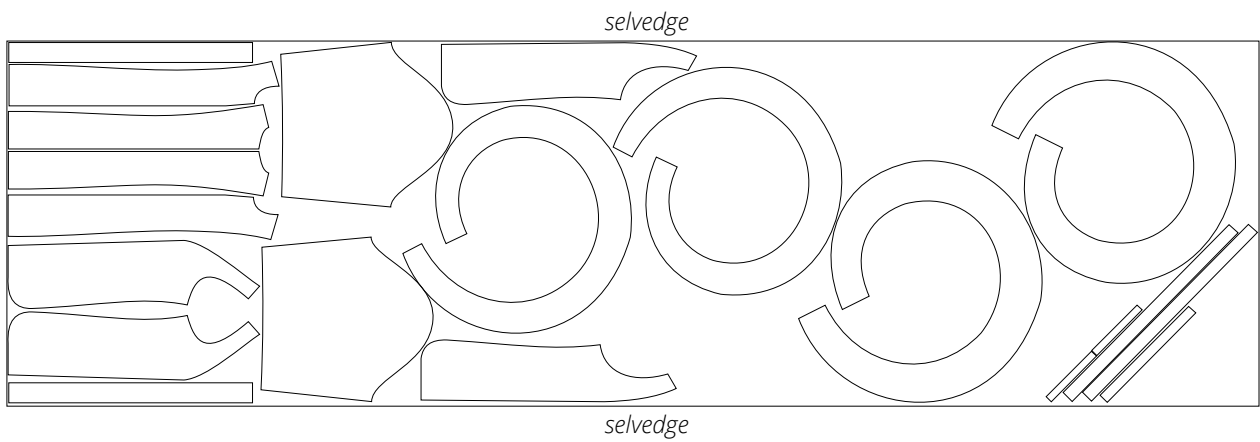
Take this into account when laying out pattern pieces on the fabric.

CUTTING LAYOUT

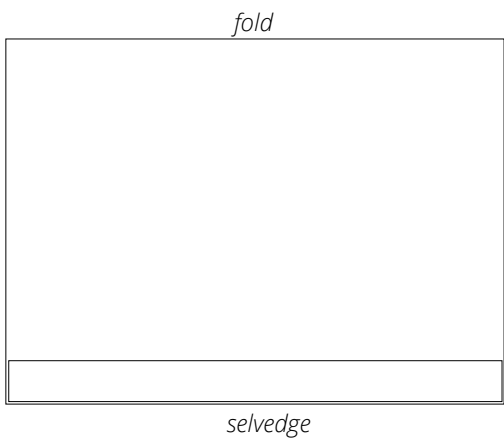
Main fabric, 140 cm (55") wide, with a directional print/nap, cut on a single layer, for sizes 34–40 in all heights



Main fabric, 140 cm (55") wide, with a directional print/nap, cut on a single layer, for sizes 42–52 in all heights



Interfacing, 140 cm (55") wide, cut on fold, for all sizes and heights



READY? LET’S GET SEWING!



Press the seam allowances toward the lower flounce piece.



Topstitch at 1 mm from the inner free edge of the lace trim, backstitching at the beginning and end of the seam.



Press the seam flat.