

FROM THE FOUNDER OF THE #VIKISEWS BRAND

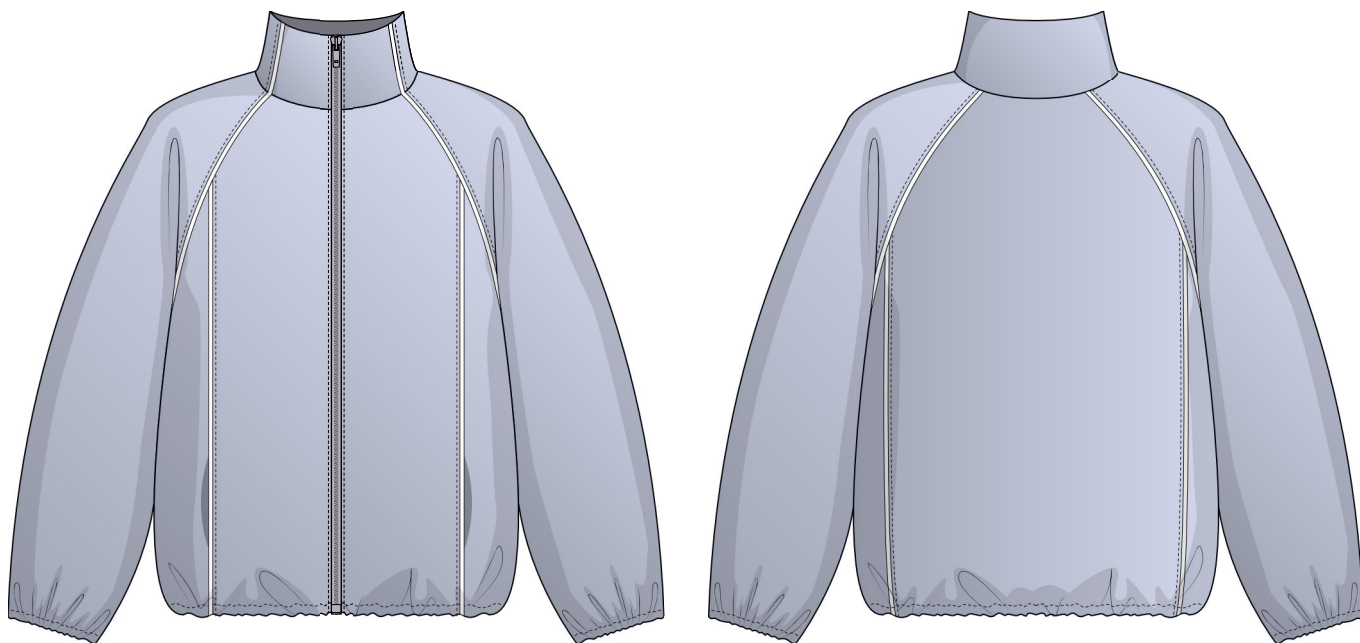


Back in 2016, when I was working on my first set of sewing instructions, I was trying to write them in such a way that even a complete beginner could easily understand and use them to create their very first garment. These instructions laid the foundation for the Vikisews brand, its vision and its mission. I wanted to create modern patterns with the utmost detailed and clear instructions.

Now, with each new collection we are constantly improving our instructions, amending them and adding more relevant details. By the time the final product reaches you, our drafters, correctors, and editors would have spent weeks perfecting every word and every photograph. If you compile a few of our instructions together, you will get a sewing manual that will assist you in sewing all kinds of garments at any difficulty level.

And I would be very happy if these instructions helped you to turn your hobby into a lifelong passion... Enjoy the process! Create your ultimate dream wardrobe! Wear your garments proudly for years to come!

If you have any questions, please contact us at info@vikisews.com — we are always there to help.



KHANDI PATTERN DESCRIPTION

Khandi is a fully lined jacket with an oversized fit and a straight silhouette. Both front and back feature vertical princess seams. The front princess seams have pockets in them. The sleeves are long, wide, raglan style. The front armscye seam of the sleeve continues on the stand collar. The front and back princess seams, collar design lines, and sleeve armscye seams are decorated with piping. The jacket closes with a separating zipper at the center front. The garment and sleeve hems feature casings and elastic cord with stoppers. Khandi is hip length.



IMPORTANT!

The contents of this pattern are copyright protected and belong exclusively to Vikisews. You may use Vikisews patterns for personal use. It is prohibited to share Vikisews patterns and instructions with third parties, as well as to publish patterns and instructions online for public access. **Non-compliance with the mentioned rules is a violation of the US copyright law and may result in civil liability and criminal prosecution.**

You may use Vikisews patterns for commercial use, to sew custom-made garments and/or create fashion collections, on the condition that the patterns are solely used in a manufacturing setting and are not further shared with individuals.

TOTAL EASE ALLOWANCE

	Bust ease	Waistline ease	Hipline ease	Upper arm ease
cm	49.2–37.2	68.6–56.6	41.2–29.2	31.9–26.9
inches	19 3/8–14 5/8	27–22 1/4	16 1/4–11 1/2	12 1/2–10 5/8

GARMENT LENGTH, SLEEVE LENGTH

Height, cm	Back length, cm	Sleeve length including shoulder width, cm
1 (154–160)	62.9–63.2	72.2–74.3
2 (162–168)	65.9–66.2	74.2–76.2
3 (170–176)	68.9–69.2	76.4–78.3
4 (178–184)	71.9–72.2	78.6–80.2

Height, ft	Back length, in	Sleeve length including shoulder width, in
1 (5'1"–5'3")	24 3/4–24 7/8	28 3/8–29 1/4
2 (5'4"–5'6")	26–26 1/8	29 1/4–30
3 (5'7"–5'9")	27 1/8–27 1/4	30 1/8–30 7/8
4 (5'10"–6'1")	28 1/4–28 3/8	31–31 5/8

SUGGESTED FABRIC

To sew this jacket, choose outerwear fabrics with the following properties:

- heavyweight or medium weight, non-stretch or low-stretch, breathable, water-repellent, windproof
- the fabric content can include natural fibers (cotton), artificial fibers (viscose), blends (cotton + polyester, viscose + polyester, etc.), and synthetics (polyester, polyester + elastane)
- the following fabrics are recommended: outerwear fabrics, dewspo, taslan, taffeta, Oxford, membrane fabrics.

For the lining, choose lining fabrics made of artificial fibers (viscose), blends (viscose + elastane, viscose + polyester), or synthetics (polyester, polyester + elastane).

The jacket in the photo is made of outerwear fabric. The fabric is medium weight and has very little stretch. The fiber content is 100% polyester. The fabric weight is 280 g/m².

The lining fabric is lining mesh. The fiber content is 100% polyester. The fabric weight is 115 g/m².
The interfacing material is a PA glue coated blend of 60% polyester and 40% viscose. The interfacing weight is 70 g/m².

FABRIC AND NOTIONS REQUIREMENTS

1. Main fabric, 150 cm wide, with a directional print/nap, in meters:

Height, cm	Size		
	XS-S	M-L	XL
1 (154-160)	1.7	2	2.05
2 (162-168)	1.75	2.1	2.15
3 (170-176)	1.8	2.15	2.2
4 (178-184)	1.85	2.25	2.35

2. Lining fabric, 160 cm wide, for all sizes, in meters:

Height, cm	Size		
	XS-S	M-L	XL
1 (154-160)	1.25	1.3	1.35
2 (162-168)	1.3	1.35	1.4
3 (170-176)	1.35	1.4	1.45
4 (178-184)	1.4	1.45	1.5

3. Interfacing, 140 cm wide, in meters:

Height, cm	Size		
	XS-S	M-L	XL
1 (154-160)	0.7	0.7	0.7
2 (162-168)	0.7	0.75	0.75
3 (170-176)	0.75	0.75	0.75
4 (178-184)	0.75	0.8	0.8

Main fabric, 59" wide, with a directional print/nap, in yards:

Height, ft	Size		
	XS-S	M-L	XL
1 (5'1"-5'3")	1 7/8	2 1/8	2 1/4
2 (5'4"-5'6")	1 7/8	2 1/4	2 3/8
3 (5'7"-5'9")	2	2 3/8	2 3/8
4 (5'10"-6'1")	2	2 1/2	2 5/8

Lining fabric, 63" wide, for all sizes, in yards:

Height, ft	Size		
	XS-S	M-L	XL
1 (5'1"-5'3")	1 3/8	1 3/8	1 1/2
2 (5'4"-5'6")	1 3/8	1 1/2	1 1/2
3 (5'7"-5'9")	1 1/2	1 1/2	1 5/8
4 (5'10"-6'1")	1 1/2	1 5/8	1 5/8

Interfacing, 55" wide, in yards:

Height, ft	Size		
	XS-S	M-L	XL
1 (5'1"-5'3")	3/4	3/4	3/4
2 (5'4"-5'6")	3/4	7/8	7/8
3 (5'7"-5'9")	7/8	7/8	7/8
4 (5'10"-6'1")	7/8	7/8	7/8

4. One zipper, for all sizes

Height, cm	Length, cm	Height, ft	Length, in
1 (154–160)	70	1 (5'1"–5'3")	27 1/2
2 (162–168)	70	2 (5'4"–5'6")	27 1/2
3 (170–176)	75	3 (5'7"–5'9")	29 1/2
4 (178–184)	75	4 (5'10"–6'1")	29 1/2

5. Elastic cord, 3 mm in diameter, for all heights, in meters:

	XS–S	M–L	XL
Cord length for garment hem	1.35	1.47	1.59
Cord length for 1 sleeve hem	0.49	0.5	0.51
Total length	2.33	2.47	2.61

Elastic cord, 1/8" in diameter, for all heights, in yards:

	XS–S	M–L	XL
Cord length for garment hem	1 1/2	1 3/4	1 7/8
Cord length for 1 sleeve hem	1/2	1/2	1/2
Total length	2 1/2	2 3/4	2 7/8

6. Eight grommets, 5 mm (1/4") in diameter

7. Four double-hole stoppers for the elastic cord

8. Piping tape, in meters:

Piping tape, in yards:

Height, cm	Size			Height, ft	Size		
	XS–S	M–L	XL		XS–S	M–L	XL
1 (154–160)	4	4.1	4.21	1 (5'1"–5'3")	4 3/8	4 1/2	4 5/8
2 (162–168)	4.13	4.23	4.34	2 (5'4"–5'6")	4 1/2	4 5/8	4 3/4
3 (170–176)	4.25	4.35	4.45	3 (5'7"–5'9")	4 5/8	4 3/4	4 7/8
4 (178–184)	4.37	4.47	4.58	4 (5'10"–6'1")	4 3/4	4 7/8	5

9. Matching thread — 1 spool matching the main fabric + 1 spool matching the lining

10. Matching topstitching thread — 1 spool

TOOLS AND EQUIPMENT

- sewing machine for construction
- stitch-in-the-ditch foot for the sewing machine (optional)
- one-sided foot for the sewing machine
- elastic threader (may be replaced with a safety pin)
- press tool and molds for installing grommets
- hole puncher

PATTERN PIECES LIST

1. From main fabric:

- front — cut 2
- side front — cut 2
- back — cut 1 on fold
- side back — cut 2
- sleeve — cut 2
- inner stand collar — cut 1 on fold
- outer mid stand collar — cut 1 on fold
- outer front stand collar — cut 2
- back neck facing — cut 1 on fold
- front facing — cut 2
- top pocket bag — cut 2
- bottom pocket bag — cut 2
- loop + hanging loop — cut 1

2. From lining fabric:

- front lining — cut 2
- back lining — cut 1 on fold
- sleeve lining — cut 2

3. From interfacing:

- front facing — cut 2
- inner stand collar — cut 1 on fold
- outer mid stand collar — cut 1 on fold
- outer front stand collar — cut 2
- back neck facing – cut 1 on fold

Additionally, cut two interfacing strips, 1.5 cm (5/8") wide, to interface the pocket opening seam allowances, and two interfacing strips, 1.5 cm (5/8") wide, to interface the front edge seam allowances. The interfacing strips should be cut on the straight grain (parallel to the selvedge).

IMPORTANT! Don't forget to transfer all pattern markings and notches onto the fabric.

SEAM ALLOWANCES

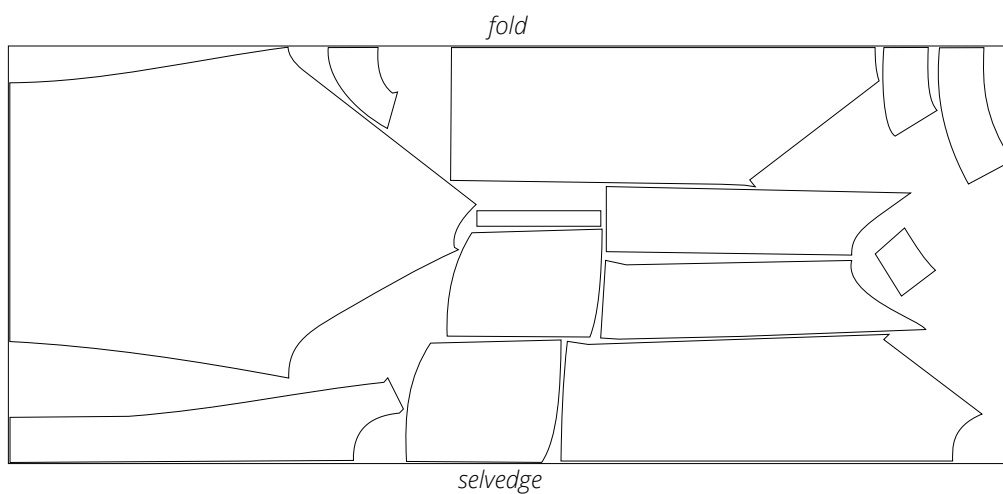
All pattern pieces include seam allowances as follows:

- garment hem allowance — 4 cm (1 5/8")
- sleeve hem allowance — 4 cm (1 5/8")
- pocket bag seam allowance — 1.5 cm (5/8")
- pocket-bag-to-front seam allowance — 1.2 cm (1/2")
- all other edges — 1 cm (3/8")

Take this into account when laying out pattern pieces on the fabric.

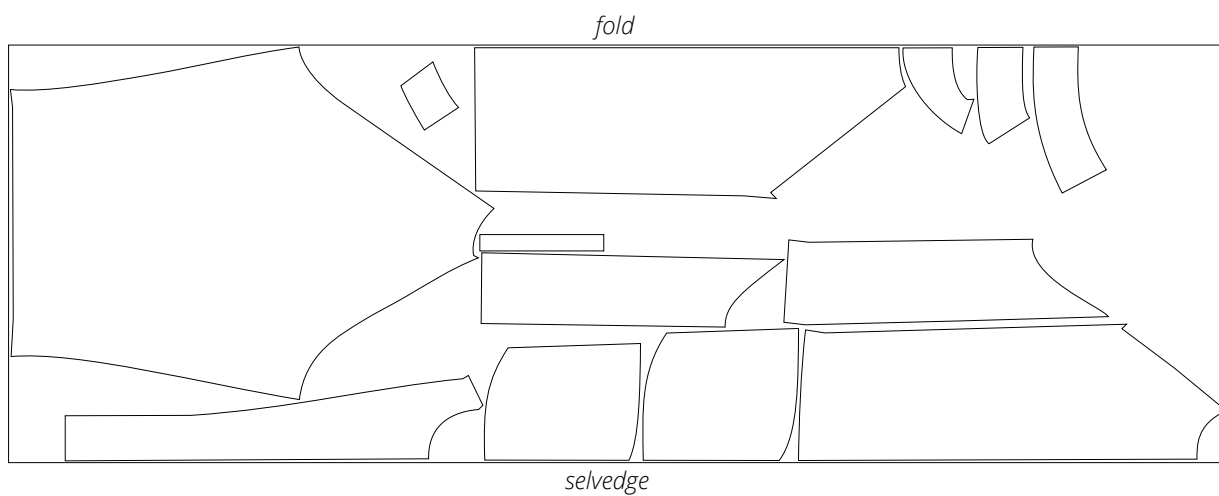
CUTTING LAYOUT

Main fabric, 150 cm (59") wide, with a directional print/nap,
cut on fold, for sizes XS-S in all heights



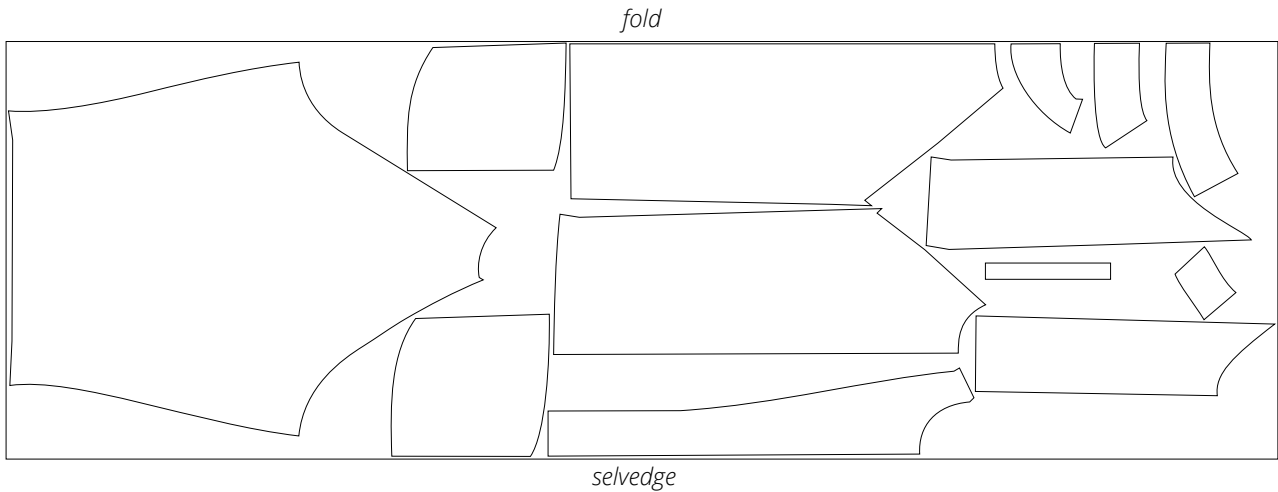
Attention! Cut only one loop + hanging loop piece.

Main fabric, 150 cm (59") wide, with a directional print/nap,
cut on fold, for sizes M-L in all heights



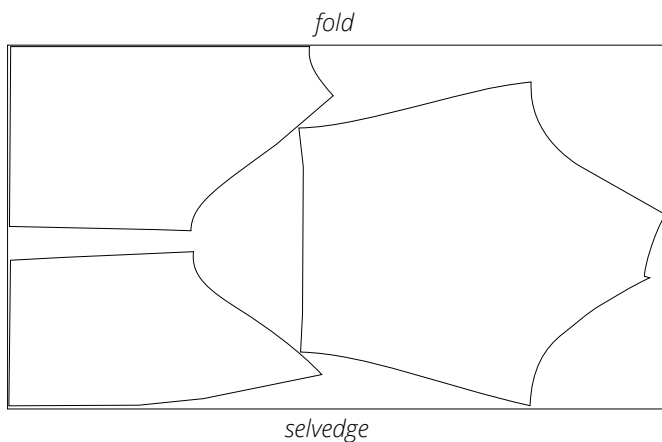
Attention! Cut only one loop + hanging loop piece.

Main fabric, 150 cm (59") wide, with a directional print/nap,
cut on fold, for size XL in all heights

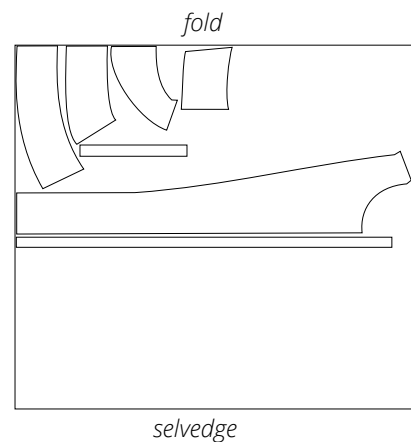


Attention! Cut only one loop + hanging loop piece.

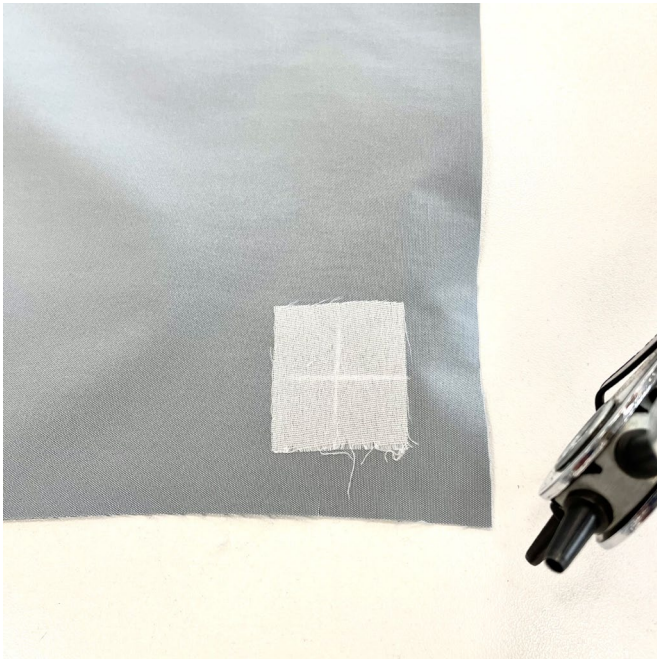
Lining fabric, 160 cm (63") wide, with
a directional print, cut on fold, for all sizes
in all heights



Interfacing, 140 cm (55") wide,
cut on fold in one direction,
for all sizes in all heights



READY? LET'S GET SEWING!



Mark the placement of grommets on the interfaced areas of the sleeves, side front, and side back pieces.



Punch holes for grommets on the sleeves, side front and side back pieces using a hole puncher.