

FROM THE FOUNDER OF THE #VIKISEWS BRAND

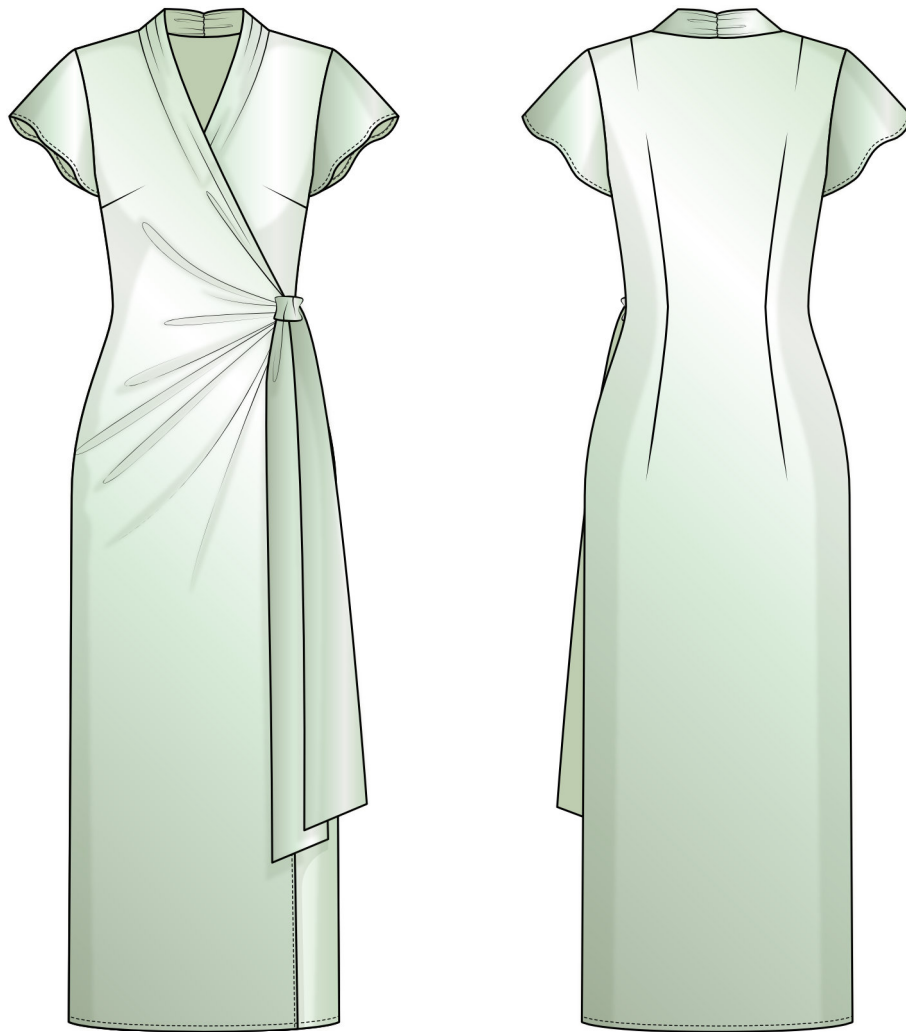


Back in 2016, when I was working on my first set of sewing instructions, I was trying to write them in such a way that even a complete beginner could easily understand and use them to create their very first garment. These instructions laid the foundation for the Vikisews brand, its vision and its mission. I wanted to create modern patterns with the utmost detailed and clear instructions.

Now, with each new collection we are constantly improving our instructions, amending them and adding more relevant details. By the time the final product reaches you, our drafters, correctors, and editors would have spent weeks perfecting every word and every photograph. If you compile a few of our instructions together, you will get a sewing manual that will assist you in sewing all kinds of garments at any difficulty level.

And I would be very happy if these instructions helped you to turn your hobby into a lifelong passion... Enjoy the process! Create your ultimate dream wardrobe! Wear your garments proudly for years to come!

If you have any questions, please contact us at info@vikisews.com — we are always there to help.



MELISANDRE PATTERN DESCRIPTION

Melisandre is a close-fitting wrap dress with an accentuated waist. The shaping at the back is achieved with shoulder and waist darts. The front is shaped with bust darts. The low V-neckline is finished with a grown-on shawl collar gathered along the center back seam. The dress fastens with two tie belts attached to the right front edge and the left side seam. The left front edge fastens with inner ties on the wrong side of the garment. The short set-in sleeves are flared at the hem. Melisandre is ankle-length.



IMPORTANT!

The contents of this pattern are copyright protected and belong exclusively to Vikisews. You may use Vikisews patterns for personal use. It is prohibited to share Vikisews patterns and instructions with third parties, as well as to publish patterns and instructions online for public access. **Non-compliance with the mentioned rules is a violation of the US copyright law and may result in civil liability and criminal prosecution.**

You may use Vikisews patterns for commercial use, to sew custom-made garments and/or create fashion collections, on the condition that the patterns are solely used in a manufacturing setting and are not further shared with individuals.

TOTAL EASE ALLOWANCE

	Bust ease (estimated)	Waistline ease (estimated)	Hipline ease	Upper arm ease
cm	3.3–5.4	5.8–6.9	1.5	16.1–17.6
inches	1 1/4–2 1/8	2 1/4–2 3/4	5/8	6 3/8–6 7/8

GARMENT LENGTH, SLEEVE LENGTH

Height, cm	Back length from waist down, cm	Sleeve length, cm
1 (154–160)	87	10.8–13.3
2 (162–168)	90	11.7–14.4
3 (170–176)	93	12.7–15.4
4 (178–184)	96	13.8–16.4

Height, ft	Back length from waist down, in	Sleeve length, in
1 (5'1"–5'3")	34 1/4	4 1/4–5 1/4
2 (5'4"–5'6")	35 3/8	4 5/8–5 5/8
3 (5'7"–5'9")	36 5/8	5–6 1/8
4 (5'10"–6'1")	37 3/4	5 3/8–6 1/2

SUGGESTED FABRIC

To sew this dress, choose lightweight to medium-weight, soft, non-stretch or low-stretch, opaque or semi-sheer dress-weight fabrics made of natural fibers, artificial fibers, blends, or synthetics.

The following fabrics are recommended: satin, crepe de chine, natural or artificial silk.

Fabrics with a blended fiber content are preferable, as they are less prone to wrinkling, generally more resistant to wear and tear, and more durable.

Attention! We do not recommend stretchy knit fabrics.

The dress in the photo is made of natural silk. The fabric is medium weight, soft, non-stretch. The fiber content is 100% silk. The fabric weight is 130 g/m².

FABRIC AND NOTIONS REQUIREMENTS

1. Main fabric, 115–150 g/m², 140 cm wide, with a directional print/nap, in meters:

Height, cm	Size							
	34	36–40	42	44	46	48	50	52
1 (154–160)	2.05	2.1	2.45	2.5	2.6	2.7	2.75	2.9
2 (162–168)	2.1	2.15	2.5	2.55	2.7	2.75	2.85	2.95
3 (170–176)	2.15	2.2	2.6	2.75	2.8	2.9	2.95	3.05
4 (178–184)	2.2	2.25	2.65	2.8	2.9	2.95	3.05	3.1

Main fabric, 115–150 g/m², 55" wide, with a directional print/nap, in yards:

Height, ft	Size							
	34	36–40	42	44	46	48	50	52
1 (5'1"–5'3")	2 1/4	2 1/4	2 5/8	2 3/4	2 7/8	3	3	3 1/8
2 (5'4"–5'6")	2 1/4	2 3/8	2 3/4	2 3/4	3	3	3 1/8	3 1/4
3 (5'7"–5'9")	2 3/8	2 3/8	2 7/8	3	3	3 1/8	3 1/4	3 3/8
4 (5'10"–6'1")	2 3/8	2 1/2	2 7/8	3	3 1/8	3 1/4	3 3/8	3 3/8

IMPORTANT! When purchasing fabric, please account for shrinkage and buy 5% more than required.

2. Matching thread — 5 spools (1 spool for the sewing machine + 4 spools for the overlocker)

TOOLS AND EQUIPMENT

- sewing machine for construction
- overlocker for finishing raw edges. This may be replaced with a stretch overlock stitch or a zigzag stitch on the sewing machine (overlock or zigzag stitch width 2–3 mm, stitch length 2.5 mm)
- stitch-in-the-ditch foot for the sewing machine (optional)
- loop turner

PATTERN PIECES LIST

From main fabric:

- left front — cut 1
- right front — cut 1
- back — cut 1 on fold
- sleeve — cut 2
- left tie belt — cut 2
- right tie belt — cut 2
- inner tie — cut 2

***IMPORTANT!** Don't forget to transfer all pattern markings and notches onto the fabric.*

SEAM ALLOWANCES

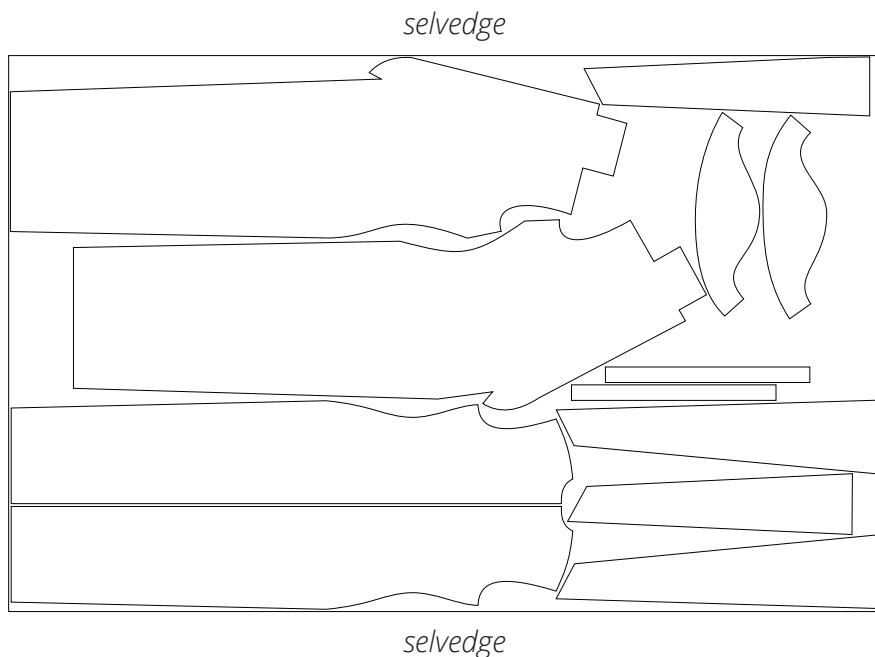
All pattern pieces include seam allowances as follows:

- garment hem allowance — 2 cm (3/4")
- all other edges — 1 cm (3/8")

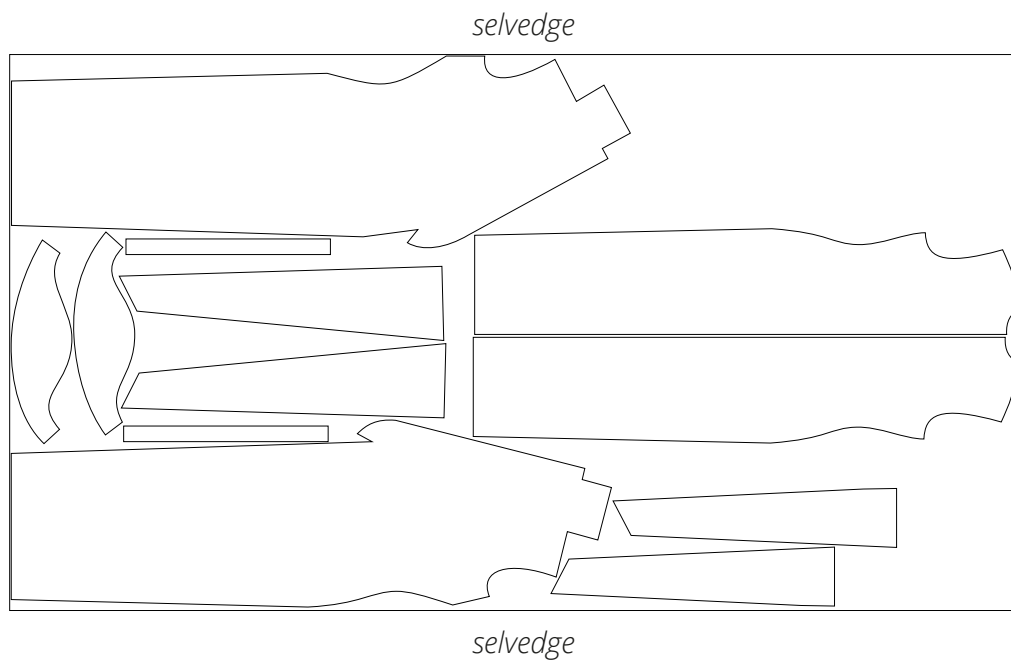
Take this into account when laying out pattern pieces on the fabric.

CUTTING LAYOUT

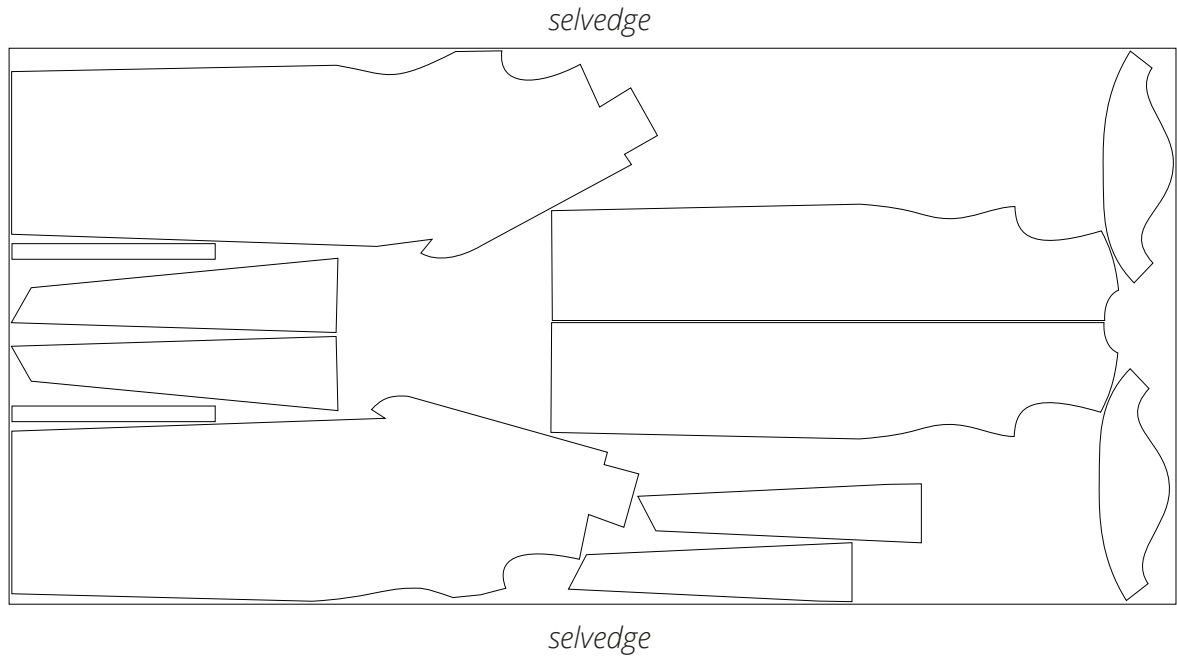
Main fabric, 140 cm (55") wide, with a directional print/nap, cut on a single layer,
for sizes 34-40 in all heights



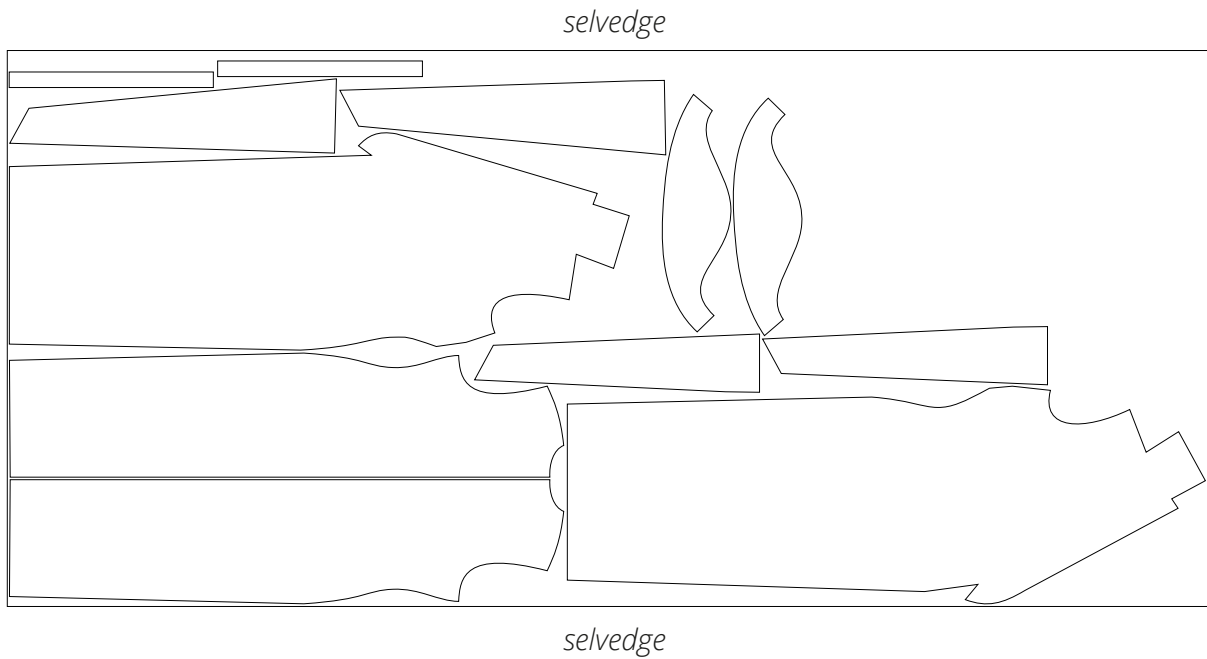
Main fabric, 140 cm (55") wide, with a directional print/nap, cut on a single layer,
for sizes 42-44 in heights 1-2, for size 42 in heights 3-4



Main fabric, 140 cm (55") wide, with a directional print/nap, cut on a single layer,
for sizes 46-50 in heights 1-2, for sizes 44-50 in heights 3-4



Main fabric, 140 cm (55") wide, with a directional print/nap, cut on a single layer,
for size 52 in all heights



READY? LET'S GET SEWING!

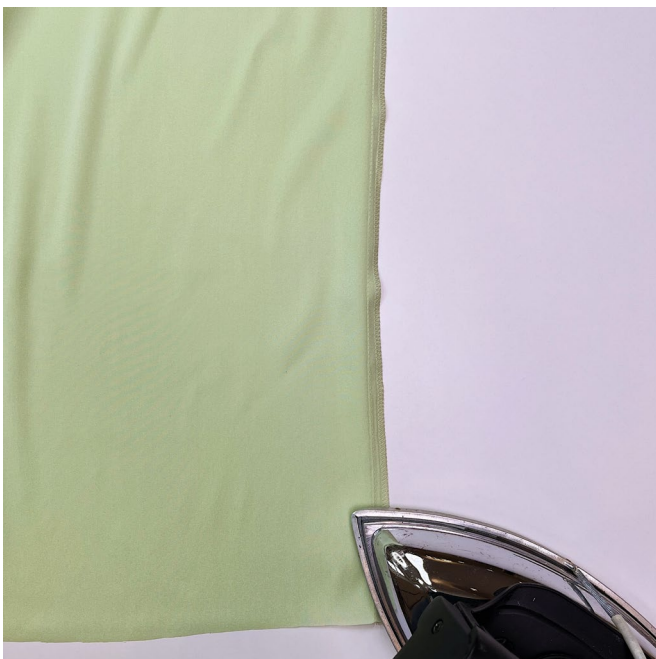


Place the front and back pieces right sides together. Align the side edges, match the notches, and pin.



Following the pattern markings, place the inner tie onto the wrong side of the right front piece along the right side seam edge. Pin in place.

Stitch the side seams on the sewing machine. Backstitch at the beginning and end of each seam.



Finish the side seam allowances on the overlocker, with the front pieces facing up. Press the seams flat.