

FROM THE FOUNDER OF THE #VIKISEWS BRAND

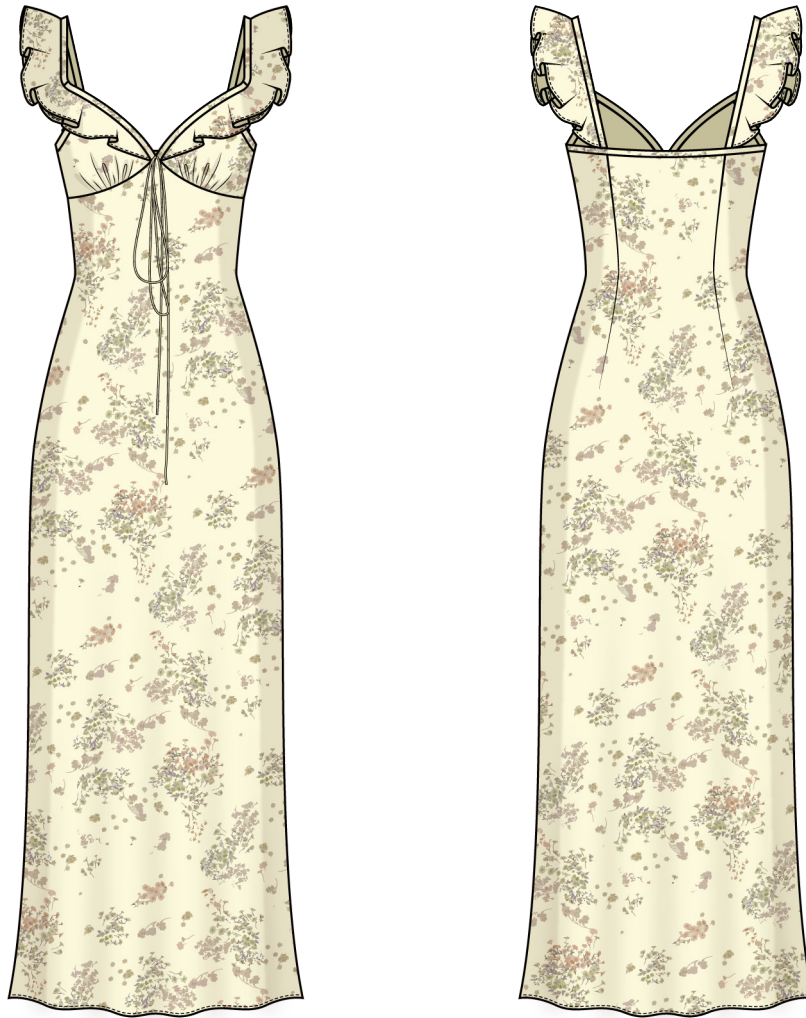


Back in 2016, when I was working on my first set of sewing instructions, I was trying to write them in such a way that even a complete beginner could easily understand and use them to create their very first garment. These instructions laid the foundation for the Vikisews brand, its vision and its mission. I wanted to create modern patterns with the utmost detailed and clear instructions.

Now, with each new collection we are constantly improving our instructions, amending them and adding more relevant details. By the time the final product reaches you, our drafters, correctors, and editors would have spent weeks perfecting every word and every photograph. If you compile a few of our instructions together, you will get a sewing manual that will assist you in sewing all kinds of garments at any difficulty level.

And I would be very happy if these instructions helped you to turn your hobby into a lifelong passion... Enjoy the process! Create your ultimate dream wardrobe! Wear your garments proudly for years to come!

If you have any questions, please contact us at info@vikisews.com — we are always there to help.



NELLY PATTERN DESCRIPTION

Nelly is a close-fitting bias-cut dress featuring an underbust seam on the front. The back is shaped with waist darts. The low V-neckline features flounces transitioning into shoulder straps. The front neckline, top edge of the flounce, and top edge of the dress are finished with binding. There are decorative sewn-on ties on the front. Nelly has a free-hanging lining and is ankle-length.



IMPORTANT!

The contents of this pattern are copyright protected and belong exclusively to Vikisews. You may use Vikisews patterns for personal use. It is prohibited to share Vikisews patterns and instructions with third parties, as well as to publish patterns and instructions online for public access. **Non-compliance with the mentioned rules is a violation of the US copyright law and may result in civil liability and criminal prosecution.**

You may use Vikisews patterns for commercial use, to sew custom-made garments and/or create fashion collections, on the condition that the patterns are solely used in a manufacturing setting and are not further shared with individuals.

TOTAL EASE ALLOWANCE (ESTIMATED)

	Bust ease	Waistline ease	Hipline ease
cm	0	6–8	6.7–8.7
inches	0	2 3/8–3 1/8	2 5/8–3 3/8

GARMENT LENGTH

Height, cm	Back length from waist down, cm	Height, ft	Back length from waist down, in
1 (154–160)	89	1 (5'1"–5'3")	35
2 (162–168)	92	2 (5'4"–5'6")	36 1/4
3 (170–176)	95	3 (5'7"–5'9")	37 3/8
4 (178–184)	98	4 (5'10"–6'1")	38 5/8

SUGGESTED FABRIC

To sew this dress, choose dress-weight fabrics with the following properties: medium weight or lightweight, soft, low-stretch. The fiber content can include natural fibers, artificial fibers, blends, or synthetics.

Fabrics with a blended fiber content are preferable, as they are less prone to wrinkling, generally more resistant to wear and tear, and more durable.

The following fabrics are recommended: batiste, dress-weight viscose, natural or artificial silk, chiffon.

The lining fabric should have the same properties as the main fabric. Even the slightest difference in the properties of the main and lining fabrics can cause distortion in the final garment.

Important! The dress can be lined if the main fabric is very thin and see-through. Alternatively, it can be made without a lining if you are using a denser fabric that is not see-through.

We do not recommend stretchy knit fabrics, crispy and stiff fabrics (organza, stretch lace).

The outer layer of the dress in the photos is made of silk chiffon. The fabric is soft, lightweight, low-stretch, and sheer. The fiber content is 100% silk. The fabric weight is 60 g/m².

The inner layer of the dress in the photos is made of crepe chiffon. The fabric is medium weight, pliable, and low-stretch. The fiber content is 100% silk. The fabric weight is 90 g/m².

FABRIC AND NOTIONS REQUIREMENTS

1. Main fabric, 140 cm wide, 40–110 g/m², with a directional print/nap, in meters:

Height, cm	Size									
	34	36	38	40	42	44	46	48	50	52
1 (154–160)	1.55	1.6	1.65	1.7	1.75	1.8	1.9	1.95	2	2.05
2 (162–168)	1.6	1.65	1.75	1.75	1.8	1.9	1.95	2	2.05	2.1
3 (170–176)	1.65	1.7	1.8	1.85	1.9	1.95	2	2.05	2.1	2.15
4 (178–184)	1.7	1.75	1.85	1.9	1.95	2	2.05	2.1	2.2	2.25

Main fabric, 55" wide, 40–110 g/m², with a directional print/nap, in yards:

Height, ft	Size									
	34	36	38	40	42	44	46	48	50	52
1 (5'1"–5'3")	1 3/4	1 3/4	1 3/4	1 7/8	1 7/8	2	2 1/8	2 1/8	2 1/8	2 1/4
2 (5'4"–5'6")	1 3/4	1 3/4	1 7/8	1 7/8	2	2 1/8	2 1/8	2 1/8	2 1/4	2 1/4
3 (5'7"–5'9")	1 3/4	1 7/8	2	2	2 1/8	2 1/8	2 1/8	2 1/4	2 1/4	2 3/8
4 (5'10"–6'1")	1 7/8	1 7/8	2	2 1/8	2 1/8	2 1/8	2 1/4	2 1/4	2 3/8	2 1/2

2. Lining fabric, 140 cm wide, 90–130 g/m², in meters:

Height, cm	Size									
	34	36	38	40	42	44	46	48	50	52
1 (154–160)	1.5	1.55	1.6	1.65	1.7	1.75	1.85	1.9	1.95	2
2 (162–168)	1.55	1.6	1.65	1.7	1.75	1.8	1.9	1.95	2	2.05
3 (170–176)	1.6	1.65	1.7	1.75	1.8	1.9	1.95	2	2.05	2.1
4 (178–184)	1.65	1.7	1.75	1.8	1.9	1.95	2	2.05	2.1	2.15

Lining fabric, 55" wide, 90–130 g/m², in yards:

Height, ft	Size									
	34	36	38	40	42	44	46	48	50	52
1 (5'1"–5'3")	1 5/8	1 3/4	1 3/4	1 3/4	1 7/8	1 7/8	2	2 1/8	2 1/8	2 1/8
2 (5'4"–5'6")	1 3/4	1 3/4	1 3/4	1 7/8	1 7/8	2	2 1/8	2 1/8	2 1/8	2 1/4
3 (5'7"–5'9")	1 3/4	1 3/4	1 7/8	1 7/8	2	2 1/8	2 1/8	2 1/8	2 1/4	2 1/4
4 (5'10"–6'1")	1 3/4	1 7/8	1 7/8	2	2 1/8	2 1/8	2 1/8	2 1/4	2 1/4	2 3/8

***IMPORTANT!** When purchasing fabric, please account for shrinkage and buy 5% more than required.*

3. Matching thread — 5 spools (1 spool for the sewing machine + 4 spools for the overlocker)

TOOLS AND EQUIPMENT

- sewing machine for construction
- overlocker for finishing raw edges. This may be replaced with a stretch overlock stitch or a zigzag stitch on the sewing machine (overlock or zigzag stitch width 2–3 mm, stitch length 2.5 mm)
- stitch-in-the-ditch foot for the sewing machine (optional)
- bias tape maker
- loop turner

PATTERN PIECES LIST

1. From main fabric:

- front — cut 1
- back — cut 1
- top front — cut 2
- flounce — cut 2
- top edge binding — cut 1
- strap + top front binding — cut 2
- tie — cut 2

***IMPORTANT!** Don't forget to transfer all pattern markings and notches onto the fabric.*

2. From lining fabric:

- front — cut 1
- back — cut 1
- top front — cut 2
- flounce — cut 2

SEAM ALLOWANCES

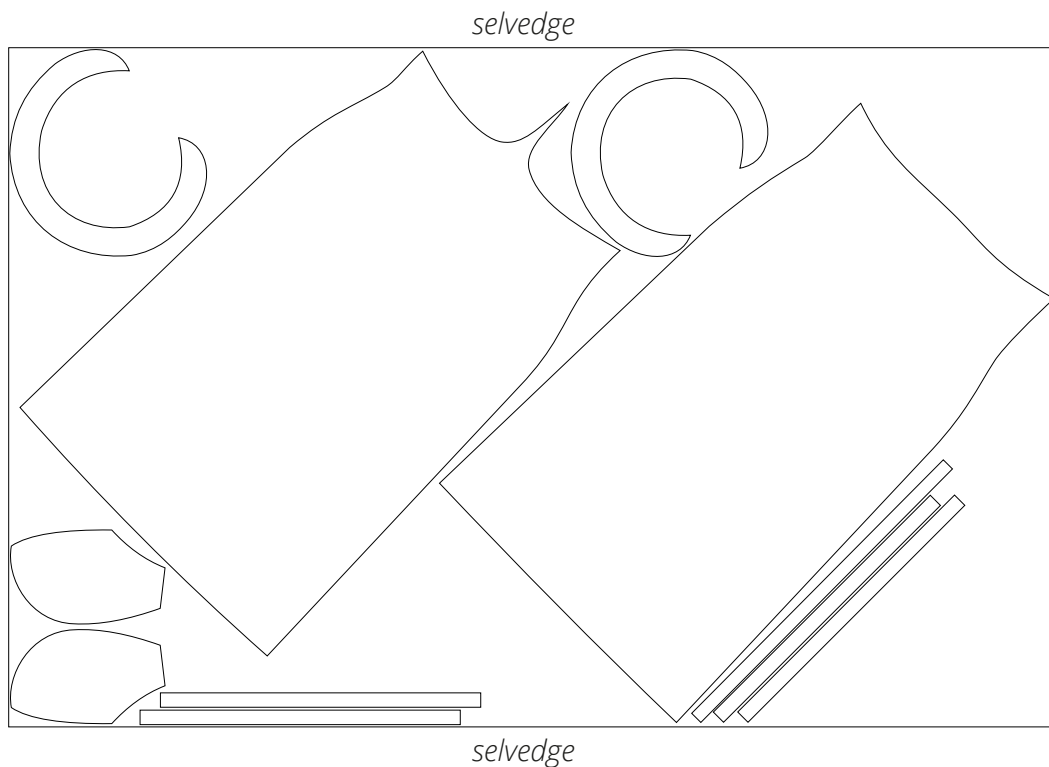
All pattern pieces include seam allowances as follows:

- top edges of the top front, back, and flounce — none
- all other edges — 1 cm (3/8")

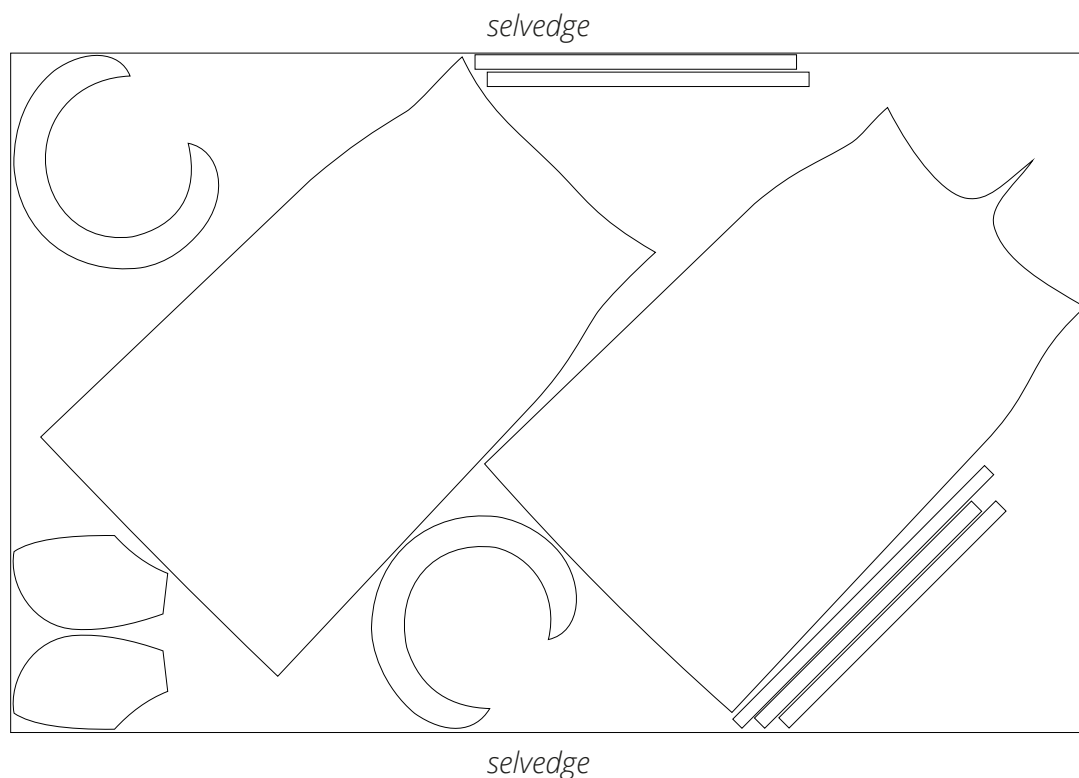
Take this into account when laying out pattern pieces on the fabric.

CUTTING LAYOUT

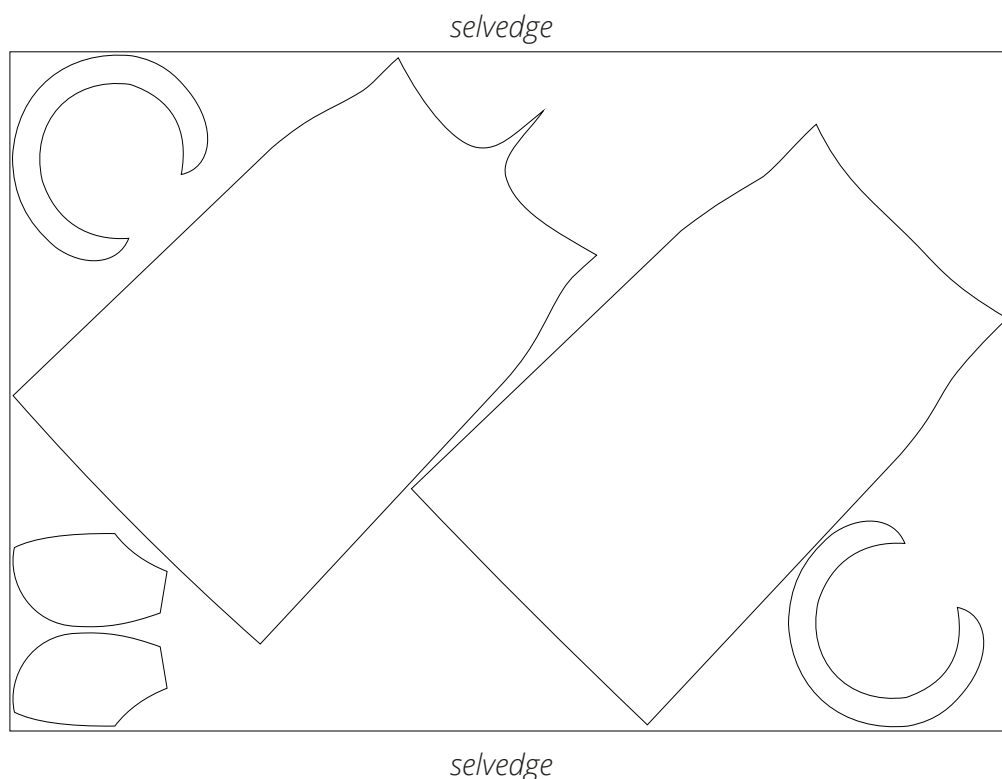
Main fabric, 140 cm (55") wide, with a directional print/nap, cut on a single layer,
for all sizes in height 1; sizes 34–44 in heights 2–3; sizes 34–36 in height 4



Main fabric, 140 cm (55") wide, with a directional print/nap, cut on a single layer,
for sizes 46–52 in heights 2–3; sizes 38–52 in height 4



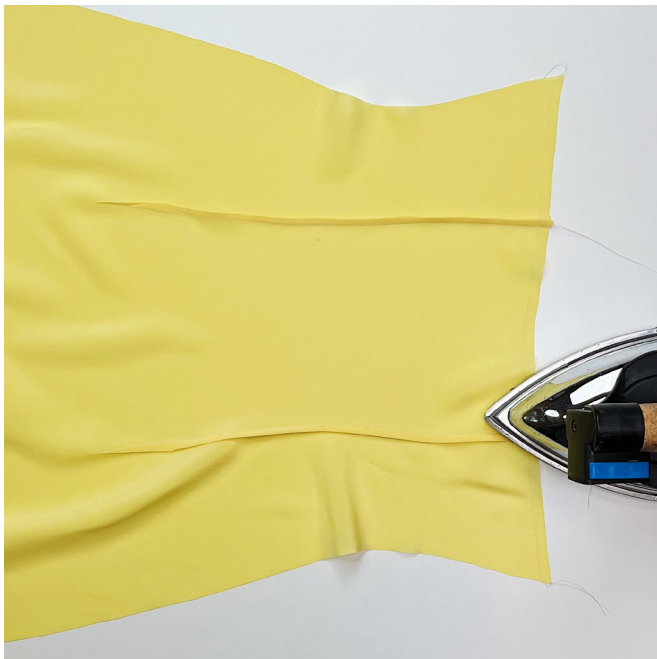
Lining fabric, 140 cm (55") wide, with a directional print/nap, cut on a single layer,
for all sizes in all heights



READY? LET'S GET SEWING!



Tie the thread tails at the tip of the dart into a knot and hide them between the fabric layers using a needle.



Press the dart seam allowances on the back lining piece towards the side edge.



On the back piece, stitch the darts just like you did on the back lining.

Press the dart seam allowances towards the center.