

FROM THE FOUNDER OF THE #VIKISEWS BRAND

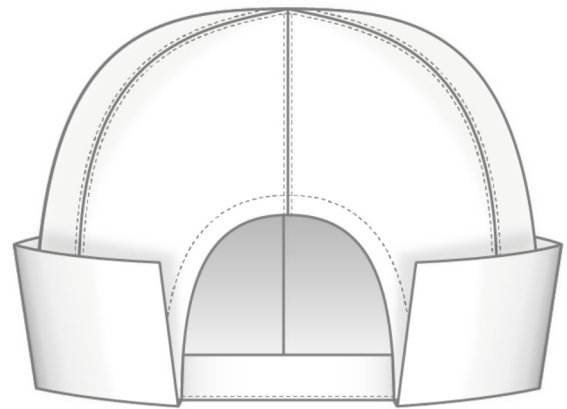
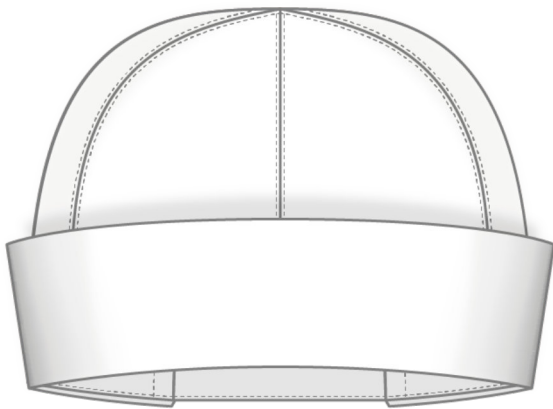


Back in 2016, when I was working on my first set of sewing instructions, I was trying to write them in such a way that even a complete beginner could easily understand and use them to create their very first garment. These instructions laid the foundation for the Vikisews brand, its vision and its mission. I wanted to create modern patterns with the utmost detailed and clear instructions.

Now, with each new collection we are constantly improving our instructions, amending them and adding more relevant details. By the time the final product reaches you, our drafters, correctors, and editors would have spent weeks perfecting every word and every photograph. If you compile a few of our instructions together, you will get a sewing manual that will assist you in sewing all kinds of garments at any difficulty level.

And I would be very happy if these instructions helped you to turn your hobby into a lifelong passion... Enjoy the process! Create your ultimate dream wardrobe! Wear your garments proudly for years to come!

If you have any questions, please contact us at info@vikisews.com — we are always there to help.



TABITHA PATTERN DESCRIPTION

Tabitha is a lined docker cap with an upturned brim. The double-layer brim has clean-finished back edges. The cap fastens at the back with a buttoned tab and features topstitching along the panel seams.



IMPORTANT!

The contents of this pattern are copyright protected and belong exclusively to Vikisews. You may use Vikisews patterns for personal use. It is prohibited to share Vikisews patterns and instructions with third parties, as well as to publish patterns and instructions online for public access. **Non-compliance with the mentioned rules is a violation of the US copyright law and may result in civil liability and criminal prosecution.**

You may use Vikisews patterns for commercial use, to sew custom-made garments and/or create fashion collections, on the condition that the patterns are solely used in a manufacturing setting and are not further shared with individuals.

SUGGESTED FABRIC

To sew this cap, choose medium-weight, soft, non-stretch, opaque fabrics made of natural fibers, artificial fibers, blends, or synthetics.

Recommended fabrics: corduroy, denim, poplin, sateen.

For the lining, choose lining fabrics made of artificial fibers (viscose), natural fibers (cotton), or blends (viscose + elastane, viscose + polyester).

The cap in the photos is made of denim. The fabric is medium weight, soft, and without stretch. The fiber content is 100% cotton. The fabric weight is 250 g/m².

The lining is 100% cotton batiste. The lining fabric weight is 75 g/m².

FABRIC AND NOTIONS REQUIREMENTS

1. Main fabric, 140 cm (55") wide, with a directional print/nap, 180–250 g/m²:

Size	52–54	56–58
meters	0.45	0.5
yards	1/2	1/2

IMPORTANT! When purchasing fabric, please account for shrinkage and buy 5% more than required.

2. Lining fabric, 140 cm (55") wide, 60–80 g/m², for all sizes – 0.45 m (1/2 yd).

3. Lightweight interfacing, knit or woven, 140 cm (55") wide, 30 g/m², for all sizes – 0.45 m (1/2 yd).

4. Two buttons, 0.7–1 cm (1/4–3/8") in diameter.

5. Matching thread – 1 spool for the sewing machine.

TOOLS AND EQUIPMENT

- sewing machine for construction
- buttonhole foot for the sewing machine
- stitch-in-the-ditch foot for the sewing machine (optional)

PATTERN PIECES LIST

1. From main fabric:

- panel – cut 4
- back panel – cut 2
- tab – cut 1
- brim – cut 1

2. From lining fabric:

- panel – cut 4
- back panel – cut 2
- binding – cut 1

***IMPORTANT!** Don't forget to transfer all pattern markings and notches onto the fabric.*

3. From interfacing:

- panel – cut 4
- back panel – cut 2
- tab – cut 1
- binding – cut ½ the width of the pattern piece

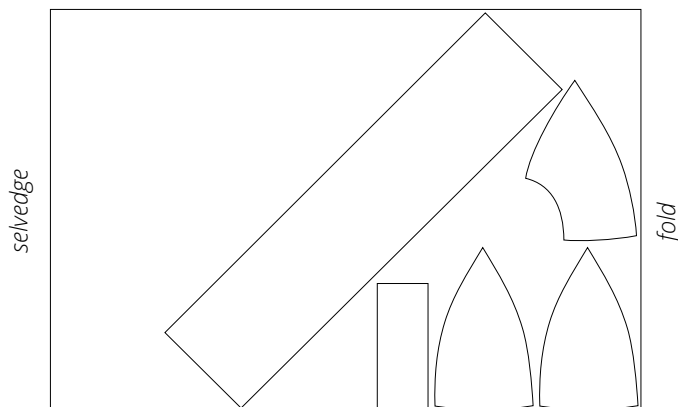
SEAM ALLOWANCES

All pattern pieces include 1 cm (3/8") seam allowances.

Take this into account when laying out pattern pieces on the fabric.

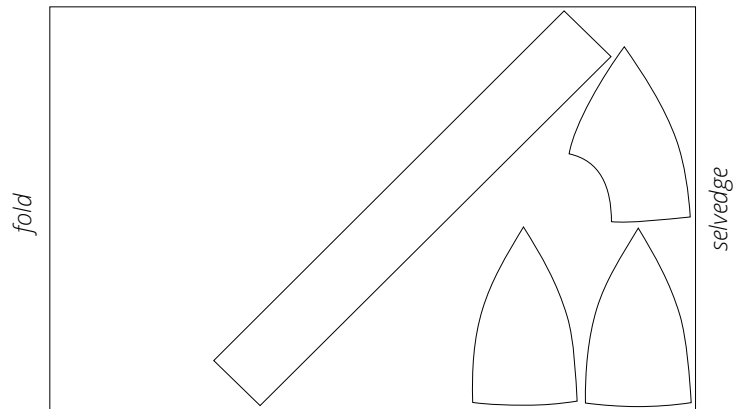
CUTTING LAYOUT

Main fabric, 140 cm (55") wide,
with a directional print/nap,
cut on fold, for all sizes



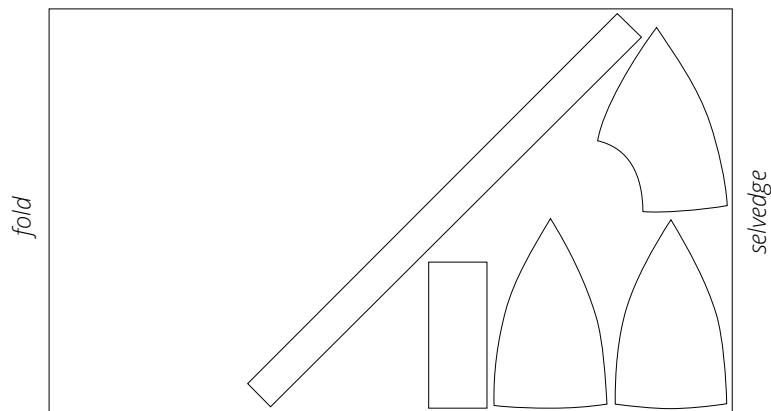
Attention! Cut one each of the tab and brim pieces.

Lining fabric, 140 cm (55") wide,
with a directional print, cut on fold,
for all sizes



Attention! Cut one binding piece only.

Interfacing, 140 cm (55") wide,
cut on fold and in one direction,
for all sizes



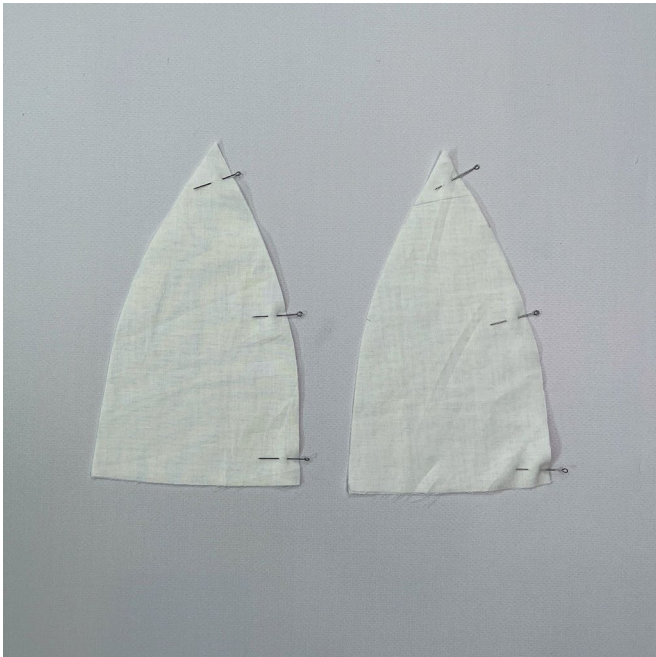
Attention! Cut one each of the tab and binding pieces.

READY? LET'S GET SEWING!

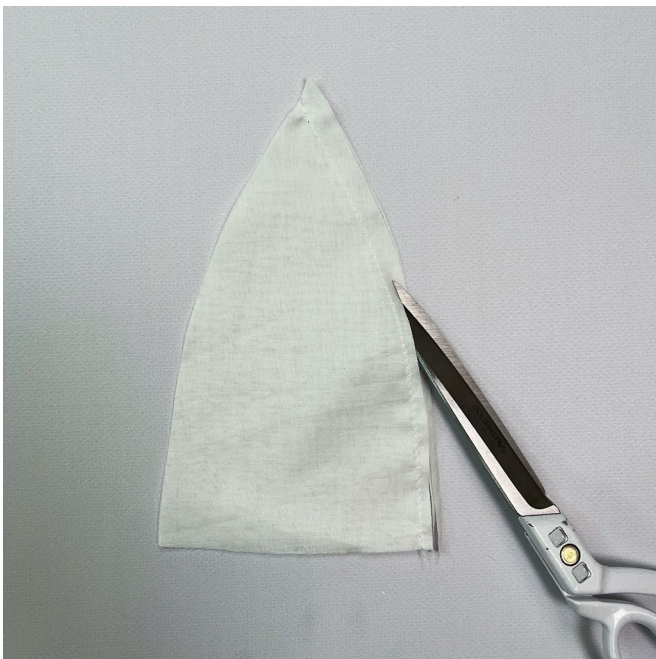


Working from the right side, topstitch 2 mm away from the seam on both sides. Backstitch at the beginning and end.

Press and steam the crown on a rounded pressing form.



Pair up the panel lining pieces and place them right sides together. Align the edges, match the notches, and pin. Stitch on the sewing machine, backstitching at the beginning and end of the seam.



Trim the seam allowances down to 5 mm (just under 1/4").