

FROM THE FOUNDER OF THE #VIKISEWS BRAND



Back in 2016, when I was working on my first set of sewing instructions, I was trying to write them in such a way that even a complete beginner could easily understand and use them to create their very first garment. These instructions laid the foundation for the Vikisews brand, its vision and its mission. I wanted to create modern patterns with the utmost detailed and clear instructions.

Now, with each new collection we are constantly improving our instructions, amending them and adding more relevant details. By the time the final product reaches you, our drafters, correctors, and editors would have spent weeks perfecting every word and every photograph. If you compile a few of our instructions together, you will get a sewing manual that will assist you in sewing all kinds of garments at any difficulty level.

And I would be very happy if these instructions helped you to turn your hobby into a lifelong passion... Enjoy the process! Create your ultimate dream wardrobe! Wear your garments proudly for years to come!

If you have any questions, please contact us at info@vikisews.com — we are always there to help.



RHEA PATTERN DESCRIPTION

Rhea is a semi-fitted, ankle-length top with adjustable straps. The top part of the front is shaped with bust darts, while the open-front bottom part flares towards the hem. The garment closes with a tie fastening.



IMPORTANT!

The contents of this pattern are copyright protected and belong exclusively to Vikisews. You may use Vikisews patterns for personal use. It is prohibited to share Vikisews patterns and instructions with third parties, as well as to publish patterns and instructions online for public access. **Non-compliance with the mentioned rules is a violation of the US copyright law and may result in civil liability and criminal prosecution.**

You may use Vikisews patterns for commercial use, to sew custom-made garments and/or create fashion collections, on the condition that the patterns are solely used in a manufacturing setting and are not further shared with individuals.

TOTAL EASE ALLOWANCE

	Bust ease (estimated)	Waistline ease	Hipline ease
cm	-2.2–0.4	10.3–11.1	4.7–7.8
inches	-7/8–1/8	4–4 3/8	1 7/8–3 1/8

GARMENT LENGTH, SLEEVE LENGTH

Height, cm	Back length from waist down, cm	Height, ft	Back length from waist down, in
1 (154–160)	96.8–95.7	1 (5'1"–5'3")	38 1/8–37 5/8
2 (162–168)	99.8–98.7	2 (5'4"–5'6")	39 1/4–38 7/8
3 (170–176)	102.9–101.7	3 (5'7"–5'9")	40 1/2–40
4 (178–184)	105.9–104.8	4 (5'10"–6'1")	41 3/4–41 1/4

SUGGESTED FABRIC

To sew this top, choose dress-weight fabrics that are medium weight, pliable, soft, non-stretch or low-stretch, and opaque. The fiber content can include natural fibers, artificial fibers, blends, or synthetics.

The following fabrics are recommended: satin, dress-weight viscose, linen, sateen, silk.

The top in the photo is made of silk. The fabric is medium weight, pliable, soft, with a little stretch. The fiber content is 100% polyester. The fabric weight is 150 g/m².

FABRIC AND NOTIONS REQUIREMENTS

1. Main fabric, 140 cm wide, with a directional print/nap, in meters:

Height, cm	Size					
	34	36	38	40	42-50	52
1 (154-160)	1.75	1.8	1.9	1.95	2	2.05
2 (162-168)	1.8	1.9	1.95	2	2.1	2.15
3 (170-176)	1.9	1.95	2.05	2.1	2.15	2.2
4 (178-184)	1.95	2.05	2.1	2.2	2.2	2.25

Main fabric, 55" wide, with a directional print/nap, in yards:

Height, ft	Size					
	34	36	38	40	42-50	52
1 (5'1"-5'3")	1 7/8	2	2 1/8	2 1/8	2 1/8	2 1/4
2 (5'4"-5'6")	2	2 1/8	2 1/8	2 1/8	2 1/4	2 3/8
3 (5'7"-5'9")	2 1/8	2 1/8	2 1/4	2 1/4	2 3/8	2 3/8
4 (5'10"-6'1")	2 1/8	2 1/4	2 1/4	2 3/8	2 3/8	2 1/2

IMPORTANT! When purchasing fabric, please account for shrinkage and buy 5% more than required.

2. One set of accessories for straps: 2 slides and 2 rings
3. Two sets of sew-on hooks and eyes (optional)
4. Matching thread — 2 spools

TOOLS AND EQUIPMENT

- sewing machine for construction
- loop turner

PATTERN PIECES LIST

From main fabric:

- top front — cut 4
- top back — cut 2 on fold
- bottom front — cut 2
- bottom back — cut 1 on fold
- strap + ring tab — cut 2
- tie — cut 2

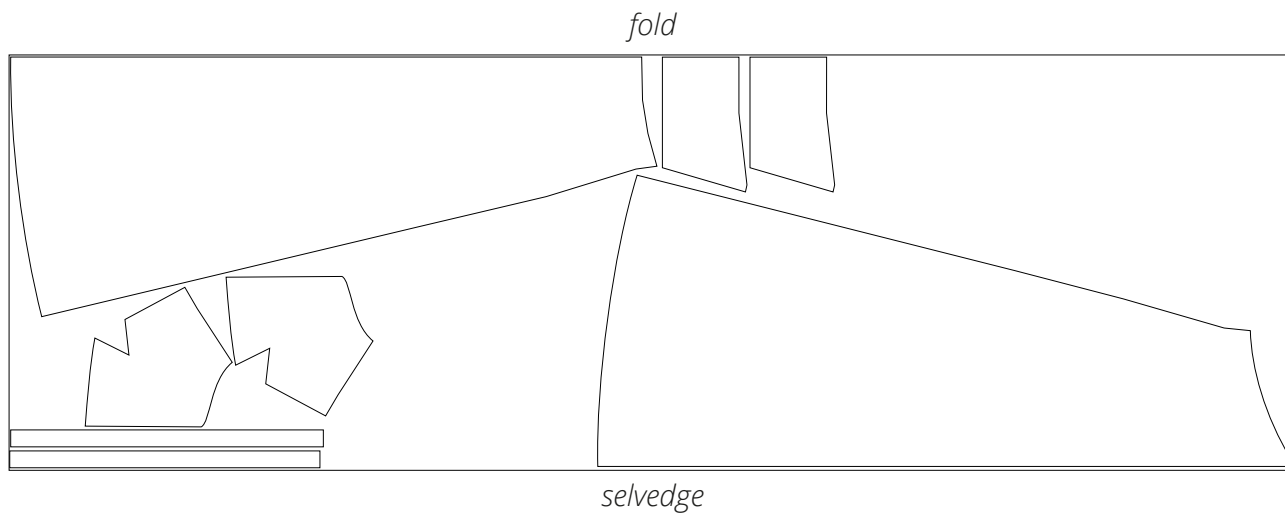
***IMPORTANT!** Don't forget to transfer all pattern markings and notches onto the fabric.*

SEAM ALLOWANCES

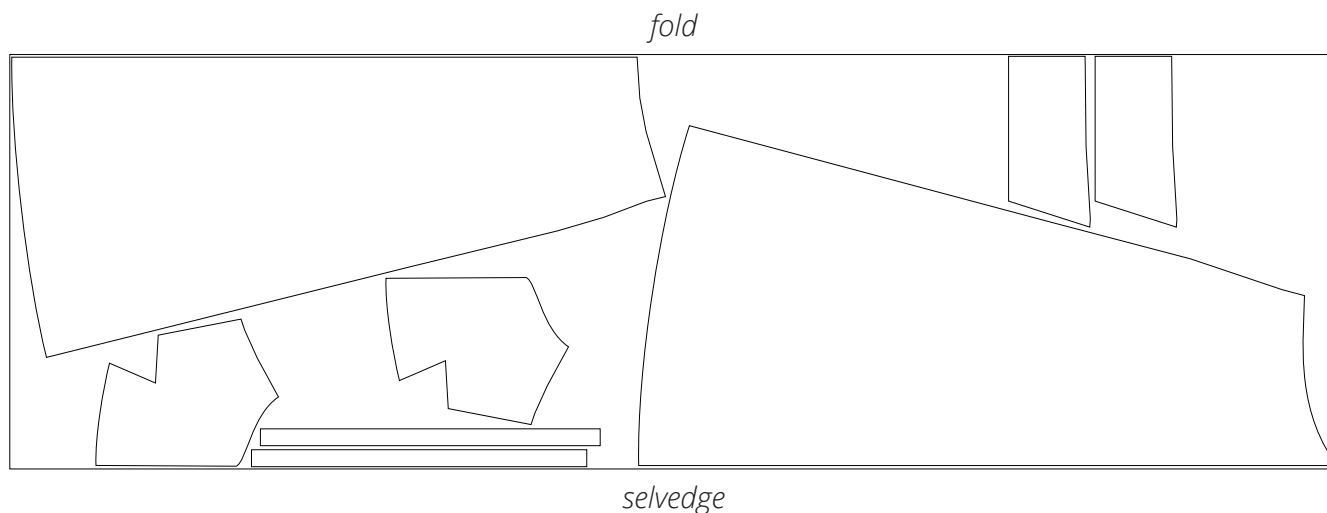
All pattern pieces include 1 cm (3/8") seam allowances.
Take this into account when laying out pattern pieces on the fabric.

CUTTING LAYOUT

Main fabric, 140 cm (55") wide, with a directional print/nap,
cut on fold, for sizes 34–40 in all heights



Main fabric, 140 cm (55") wide, with a directional print/nap,
cut on fold, for sizes 42–52 in all heights



READY? LET'S GET SEWING!



Trim the dart seam allowance down to 5 mm (just under 1/4").



Press the dart seam allowances open.



Place the top front and top back pieces of the outer layer as well as the top front and top back pieces of the inner layer right sides together in pairs. Align and pin the side edges.