

# FROM THE FOUNDER OF THE #VIKISEWS BRAND

---

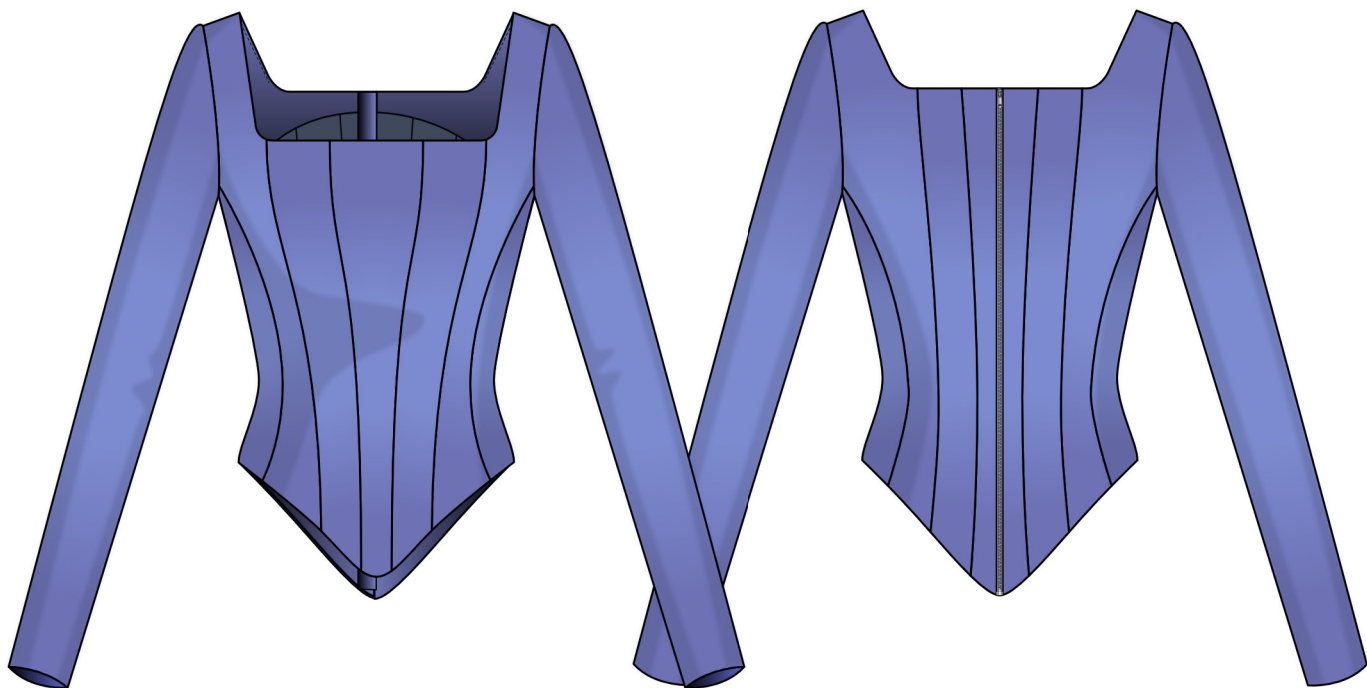


Back in 2016, when I was working on my first set of sewing instructions, I was trying to write them in such a way that even a complete beginner could easily understand and use them to create their very first garment. These instructions laid the foundation for the Vikisews brand, its vision and its mission. I wanted to create modern patterns with the utmost detailed and clear instructions.

Now, with each new collection we are constantly improving our instructions, amending them and adding more relevant details. By the time the final product reaches you, our drafters, correctors, and editors would have spent weeks perfecting every word and every photograph. If you compile a few of our instructions together, you will get a sewing manual that will assist you in sewing all kinds of garments at any difficulty level.

And I would be very happy if these instructions helped you to turn your hobby into a lifelong passion... Enjoy the process! Create your ultimate dream wardrobe! Wear your garments proudly for years to come!

If you have any questions, please contact us at [info@vikisews.com](mailto:info@vikisews.com) — we are always there to help.



## SLAINE PATTERN DESCRIPTION

---

Slaine is a close-fitting lined bustier top with an accentuated waist. The fit is achieved with princess seams. All the front and back seams are stiffened with rigilene boning. The bustier top features a low square neckline and a shaped hemline. It fastens with an exposed separating zipper and features a placket in the center back seam. The one-piece, set-in sleeves are long and close-fitting. The bustier top is below-waist length.



## IMPORTANT!

---

The contents of this pattern are copyright protected and belong exclusively to Vikisews. You may use Vikisews patterns for personal use. It is prohibited to share Vikisews patterns and instructions with third parties, as well as to publish patterns and instructions online for public access. **Non-compliance with the mentioned rules is a violation of the US copyright law and may result in civil liability and criminal prosecution.**

You may use Vikisews patterns for commercial use, to sew custom-made garments and/or create fashion collections, on the condition that the patterns are solely used in a manufacturing setting and are not further shared with individuals.

# TOTAL EASE ALLOWANCE

	Bust ease	Waistline ease	Upper arm ease
cm	-2.5 – -1.2	-0.3 – 2.8	–
inches	-1 – -1/2	-1/8 – 1 1/8	–

# GARMENT LENGTH, SLEEVE LENGTH

Height, cm	Garment length at center back from waist down (estimated), cm	Garment length at center front from waist down (estimated), cm	Sleeve length, cm
1 (154–160)	12.8–16.4	11.6–15.1	62
2 (162–168)	13.8–16.9	12.6–15.6	64
3 (170–176)	14.8–17.6	13.6–16.3	66
4 (178–184)	15.8–18.6	14.6–17.3	68
Height, ft	Garment length at center back from waist down (estimated), in	Garment length at center front from waist down (estimated), in	Sleeve length, in
1 (5'1"–5'3")	5–6 1/2	4 5/8–6	24 3/8
2 (5'4"–5'6")	5 3/8–6 5/8	5–6 1/8	25 1/4
3 (5'7"–5'9")	5 7/8–6 7/8	5 3/8–6 3/8	26
4 (5'10"–6'1")	6 1/4–7 3/8	5 3/4–6 3/4	26 3/4

# SUGGESTED FABRIC

To sew this bustier top, choose dress-weight fabrics with the following properties:

- medium weight, pliable, soft, stretchy, opaque
- the fiber content can include natural fibers (silk), artificial fibers (viscose), blends (silk + polyester + elastane), and synthetics (polyester + elastane)
- the following fabrics are recommended: stretch velvet, stretch velour

**Attention!** The chosen fabric must contain elastane.

For the lining, choose lining fabrics made of blends (viscose + elastane) or synthetics (polyester + elastane).

The bustier top in the photo is made of knit velvet. The fabric is medium weight, pliable, soft and stretchy. The fiber content includes synthetic fibers: polyester + elastane. The fabric weight is 260 g/m<sup>2</sup>.

The lining's fiber content is a blend of viscose and elastane. The fabric weight is 70 g/m<sup>2</sup>.

# FABRIC AND NOTIONS REQUIREMENTS

1. Main fabric, 260 g/m<sup>2</sup>, 140 cm wide, with a directional print/nap, in meters:

Height, cm	Size				
	34-36	38-40	42-44	46-48	50-52
1 (154-160)	1.45 (0.65; 0.8)	1.5 (0.65; 0.85)	1.55 (0.65; 0.9)	1.6 (0.65; 0.95)	1.6 (0.65; 0.95)
2 (162-168)	1.5 (0.7; 0.8)	1.55 (0.7; 0.85)	1.6 (0.7; 0.9)	1.65 (0.7; 0.95)	1.7 (0.7; 1)
3 (170-176)	1.5 (0.7; 0.8)	1.6 (0.7; 0.9)	1.65 (0.7; 0.95)	1.7 (0.7; 1)	1.75 (0.7; 1.05)
4 (178-184)	1.6 (0.75; 0.85)	1.65 (0.75; 0.9)	1.75 (0.75; 1)	1.8 (0.75; 1.05)	1.85 (0.75; 1.1)

Main fabric, 260 g/m<sup>2</sup>, 55" wide, with a directional print/nap, in yards:

Height, ft	Size				
	34-36	38-40	42-44	46-48	50-52
1 (5'1"-5'3")	1 5/8 (3/4; 7/8)	1 5/8 (3/4; 7/8)	1 3/4 (3/4; 1)	1 3/4 (3/4; 1)	1 3/4 (3/4; 1)
2 (5'4"-5'6")	1 5/8 (3/4; 7/8)	1 3/4 (3/4; 7/8)	1 3/4 (3/4; 1)	1 3/4 (3/4; 1)	1 7/8 (3/4; 1 1/8)
3 (5'7"-5'9")	1 5/8 (3/4; 7/8)	1 3/4 (3/4; 1)	1 3/4 (3/4; 1)	1 7/8 (3/4; 1 1/8)	1 7/8 (3/4; 1 1/8)
4 (5'10"-6'1")	1 3/4 (7/8; 7/8)	1 3/4 (7/8; 1)	1 7/8 (7/8; 1 1/8)	2 (7/8; 1 1/8)	2 (7/8; 1 1/4)

2. Lining fabric, 70 g/m<sup>2</sup>, 140 cm wide, with a directional print, in meters:

Height, cm	Size				
	34-36	38	40-42	44-48	50-52
1 (154-160)	0.35	0.4	0.4	0.45	0.5
2 (162-168)	0.4	0.4	0.4	0.45	0.5
3 (170-176)	0.4	0.4	0.4	0.5	0.55
4 (178-184)	0.4	0.4	0.45	0.55	0.55

Lining fabric, 70 g/m<sup>2</sup>, 55" wide, with a directional print, in yards:

Height, ft	Size			
	34-38	40-42	44-48	50-52
1 (5'1"-5'3")	3/8	3/8	1/2	1/2
2 (5'4"-5'6")	3/8	3/8	1/2	1/2
3 (5'7"-5'9")	3/8	3/8	1/2	5/8
4 (5'10"-6'1")	3/8	1/2	5/8	5/8

3. Interfacing, 50 g/m<sup>2</sup>, 140 cm wide, in meters:

Height, cm	Size				
	34–36	38–40	42–44	46–48	50–52
1 (154–160)	0.8	0.8	0.9	0.9	0.95
2 (162–168)	0.8	0.85	0.9	0.9	1
3 (170–176)	0.8	0.9	0.95	1	1.05
4 (178–184)	0.85	0.9	1	1.05	1.1

Interfacing, 50 g/m<sup>2</sup>, 55" wide, in yards:

Height, ft	Size				
	34–36	38–40	42–44	46–48	50–52
1 (5'1"–5'3")	7/8	7/8	1	1	1
2 (5'4"–5'6")	7/8	7/8	1	1	1 1/8
3 (5'7"–5'9")	7/8	1	1	1 1/8	1 1/8
4 (5'10"–6'1")	7/8	1	1 1/8	1 1/8	1 1/4

**IMPORTANT!** When purchasing fabric, please account for shrinkage and buy 5% more than required.

4. Stitched bias-cut fusible stay tape with stitch reinforcement, 1.5 cm (5/8") wide — 4 m (4 3/8 yd)
5. Rigilene boning, 1 cm (3/8") wide — 5.2 m (5 5/8 yd)
6. One separating metal zipper Nos. 3.5–4, 50 cm (19 5/8") long, for all sizes in all heights
7. Two zipper top stops for adjusting the zipper length (if needed)
8. Matching thread — 5 spools (1 spool for the sewing machine + 4 spools for the overlocker)

## TOOLS AND EQUIPMENT

- sewing machine for construction
- overlocker for finishing raw edges. This may be replaced with a stretch overlock stitch or a zigzag stitch on the sewing machine (overlock or zigzag stitch width 2–3 mm, stitch length 2.5 mm)
- one-sided foot for the sewing machine to attach the zipper
- needle mat or pressing cloth made of the main fabric
- lighter or matches for melting the rigilene boning

# PATTERN PIECES LIST

## 1. From main fabric:

- front piece 1 — cut 1 on fold
- front piece 2 — cut 2
- front piece 3 — cut 2
- front piece 4 — cut 2
- back piece 1 — cut 2
- back piece 2 — cut 2
- back piece 3 — cut 2
- back piece 4 — cut 2
- sleeve — cut 2
- top back facing — cut 2
- top front facing — cut 1 on fold
- back hem facing — cut 2
- front hem facing — cut 1 on fold
- zipper placket — cut 1

**Attention!** Interface (block fuse) the main fabric prior to cutting the pieces (except the sleeves and zipper placket).

**IMPORTANT!** Don't forget to transfer all pattern markings and notches onto the fabric.

## 2. From lining fabric:

- front piece 1 lining — cut 1 on fold
- front piece 2 lining — cut 2
- front piece 3 lining — cut 2
- front piece 4 lining — cut 2
- back piece 1 lining — cut 2
- back piece 2 lining — cut 2
- back piece 3 lining — cut 2
- back piece 4 lining — cut 2

**IMPORTANT!** The pieces are to be cut with the pile going up for a more vibrant color.

## 3. From interfacing:

- front piece 1 — cut 1 on fold
- front piece 2 — cut 2
- front piece 3 — cut 2
- front piece 4 — cut 2
- back piece 1 — cut 2
- back piece 2 — cut 2
- back piece 3 — cut 2
- back piece 4 — cut 2
- top back facing — cut 2
- top front facing — cut 1 on fold
- back hem facing — cut 2
- front hem facing — cut 1 on fold
- zipper placket — cut 1/2

# SEAM ALLOWANCES

All pattern pieces include seam allowances as follows:

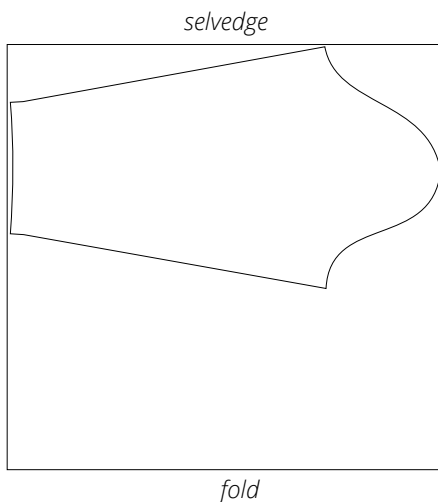
- sleeve hem allowance — 2 cm (3/4")
- all other edges — 1 cm (3/8")

Take this into account when laying out pattern pieces on the fabric.

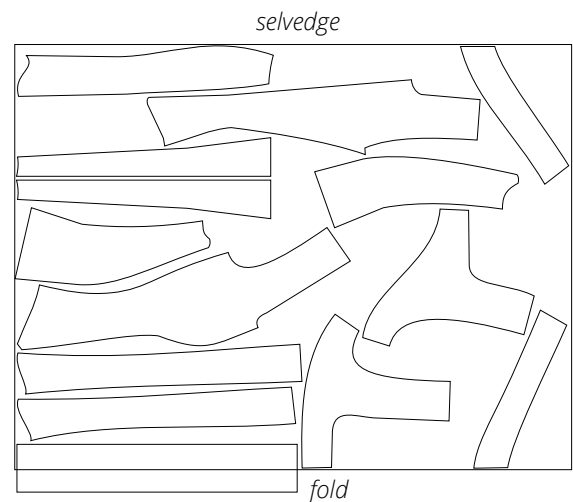
## CUTTING LAYOUT

Main fabric, 140 cm (55") wide, with a directional print/nap, cut on fold in two steps

Step 1: for all sizes in all heights

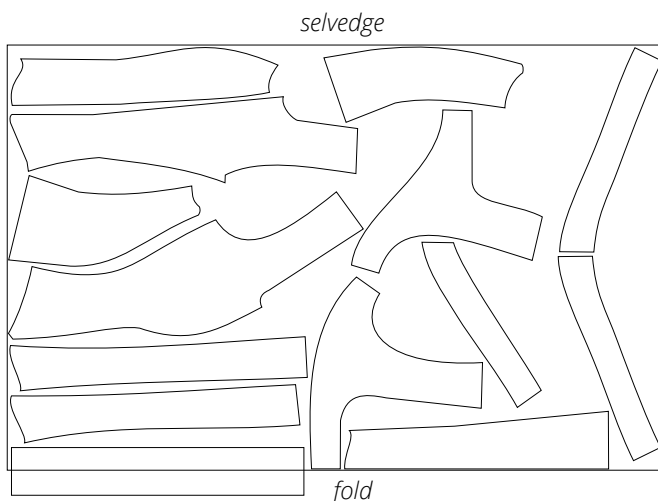


Step 2: for sizes 34–40 in all heights



**Important!** Cut the zipper placket piece on a single layer out of the leftover fabric.

Step 2: for sizes 42–46 in all heights, for sizes 48–52 in heights 3–4



**Important!** Cut the zipper placket piece on a single layer out of the leftover fabric. Cut only one front hem facing piece on a single layer.





Clip into the curved sections of the seam allowances, stopping 2 mm short of the seam.



Press the seam allowances open on a tailor's board.



Measure 1.5 cm (5/8") from the top and bottom edges of each front seam and make chalk marks on the wrong side of the piece.