

FROM THE FOUNDER OF THE #VIKISEWS BRAND

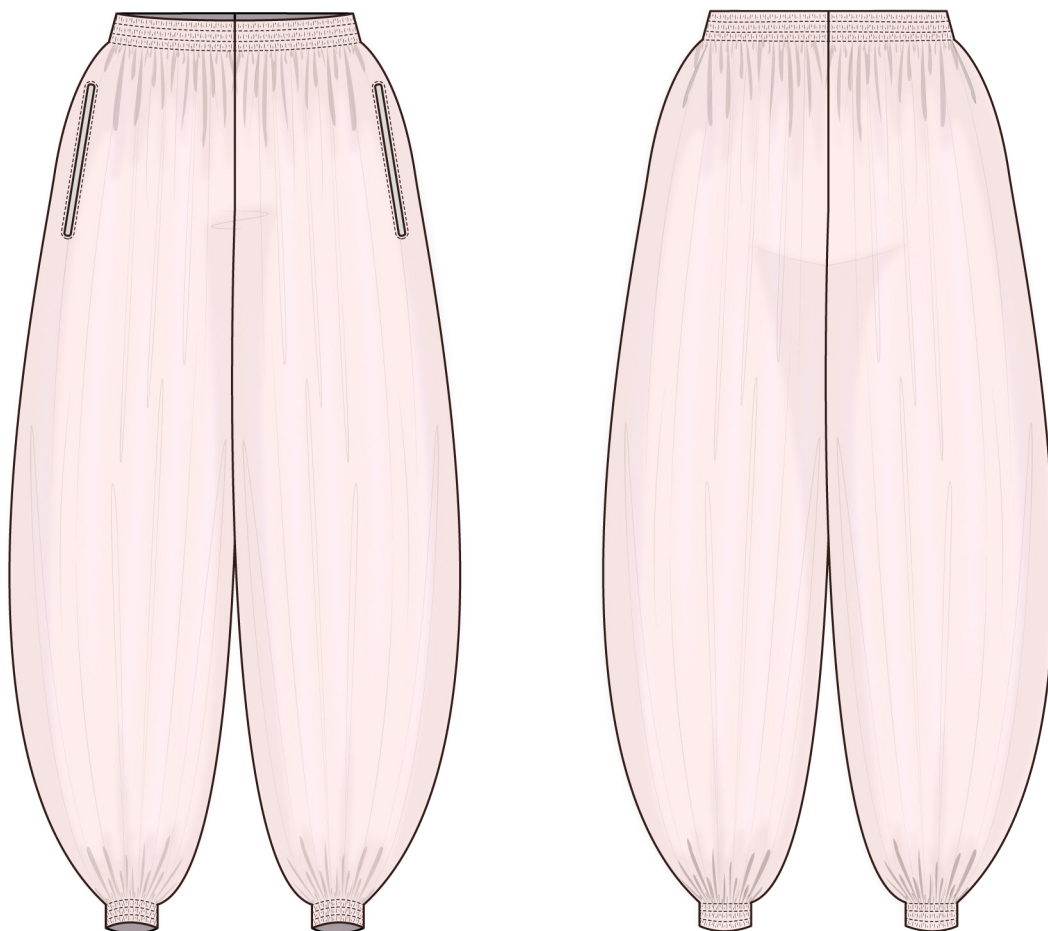


Back in 2016, when I was working on my first set of sewing instructions, I was trying to write them in such a way that even a complete beginner could easily understand and use them to create their very first garment. These instructions laid the foundation for the Vikisews brand, its vision and its mission. I wanted to create modern patterns with the utmost detailed and clear instructions.

Now, with each new collection we are constantly improving our instructions, amending them and adding more relevant details. By the time the final product reaches you, our drafters, correctors, and editors would have spent weeks perfecting every word and every photograph. If you compile a few of our instructions together, you will get a sewing manual that will assist you in sewing all kinds of garments at any difficulty level.

And I would be very happy if these instructions helped you to turn your hobby into a lifelong passion... Enjoy the process! Create your ultimate dream wardrobe! Wear your garments proudly for years to come!

If you have any questions, please contact us at info@vikisews.com — we are always there to help.



DILARA PATTERN DESCRIPTION

Dilara is a pair of loose-fitting pants with faced pockets. The grown-on waistband is decorated with rows of topstitching that form casings threaded with elastic. The upper edge of the waistband sits 3 cm (1 1/8") below the natural waistline.

The bottom edges of the pants are finished with a double-fold hem. The hems also feature rows of topstitching that form casings threaded with elastic. Dilara is below-ankle length.



IMPORTANT!

The contents of this pattern are copyright protected and belong exclusively to Vikisews. You may use Vikisews patterns for personal use. It is prohibited to share Vikisews patterns and instructions with third parties, as well as to publish patterns and instructions online for public access. **Non-compliance with the mentioned rules is a violation of the US copyright law and may result in civil liability and criminal prosecution.**

You may use Vikisews patterns for commercial use, to sew custom-made garments and/or create fashion collections, on the condition that the patterns are solely used in a manufacturing setting and are not further shared with individuals.

TOTAL EASE ALLOWANCE

	Waistline ease	Hipline ease
cm	124–139	98–109
inches	48 7/8–54 3/4	38 5/8–42 7/8

GARMENT LENGTH, HEM WIDTH

Height, cm	Side length including waistband and cuff, cm	Hem width (without elastic), cm
1 (154–160)	91.7–96.1	60–69
2 (162–168)	96–100.4	60–69
3 (170–176)	100.3–104.7	60–69
4 (178–184)	104.6–109	60–69

Height, ft	Side length including waistband and cuff, in	Hem width (without elastic), in
1 (5'1"–5'3")	36 1/8–37 7/8	23 5/8–27 1/8
2 (5'4"–5'6")	37 3/4–39 1/2	23 5/8–27 1/8
3 (5'7"–5'9")	39 1/2–41 1/4	23 5/8–27 1/8
4 (5'10"–6'1")	41 1/8–42 7/8	23 5/8–27 1/8

SUGGESTED FABRIC

To sew this pair of pants, choose dress-weight fabrics with the following properties: medium weight, soft, non-stretch. The fiber content can include natural fibers, artificial fibers, blends, or synthetics.

The following fabrics are recommended: ramie, linen, cotton.

Attention! We do not recommend stretchy knit fabrics and lightweight sheer fabrics (chiffon, organza, stretch lace).

The pants in the photo are made of cotton. The fabric is medium weight, pliable, soft, with a little stretch. The fiber content is 100% cotton. The fabric weight is 200 g/m².

FABRIC AND NOTIONS REQUIREMENTS

1.1. Main fabric, 140 cm wide, with a directional print/nap, in meters:

Height, cm	Size									
	34	36	38	40	42	44	46	48	50	52
1 (154–160)	2.35	2.35	2.4	2.4	2.4	2.45	2.45	2.45	2.5	—
2 (162–168)	2.45	2.45	2.45	2.5	2.5	2.5	2.55	2.55	2.55	—
3 (170–176)	2.55	2.55	2.55	2.6	2.6	2.6	2.65	2.65	2.65	—
4 (178–184)	2.65	2.65	2.65	2.65	2.7	2.7	2.7	2.75	2.75	—

Main fabric, 55" wide, with a directional print/nap, in yards:

Height, ft	Size			
	34–38	40	42–50	52
1 (5'1"–5'3")	2 5/8	2 5/8	2 5/8	—
2 (5'4"–5'6")	2 5/8	2 3/4	2 3/4	—
3 (5'7"–5'9")	2 3/4	2 7/8	2 7/8	—
4 (5'10"–6'1")	2 7/8	2 7/8	3	—

*For size 52, we recommend using the width of 145 cm (57") or more.

1.2. Main fabric, 145 cm wide, with a directional print/nap, in meters:

Height, cm	Size
	52
1 (154–160)	2.5
2 (162–168)	2.6
3 (170–176)	2.65
4 (178–184)	2.75

Main fabric, 57" wide, with a directional print/nap, in yards:

Height, ft	Size
	52
1 (5'1"–5'3")	2 3/4
2 (5'4"–5'6")	2 7/8
3 (5'7"–5'9")	2 7/8
4 (5'10"–6'1")	3

IMPORTANT! When purchasing fabric, please account for shrinkage and buy 5% more than required.

2. Lightweight interfacing, knit or woven, 140 cm (55") wide, for all sizes in all heights — 0.25 m (1/4 yd)
3. Elastic for the waistband and hems, 1 cm wide, in centimeters (the exact elastic length is specified on the pattern):

Height, cm	Size									
	34	36	38	40	42	44	46	48	50	52
1 (154–160)	332	348	363	379	395	410	426	441	457	472
2 (162–168)	334	350	365	381	396	412	428	443	458	474
3 (170–176)	336	351	367	383	398	414	430	444	460	476
4 (178–184)	338	353	369	385	400	416	431	446	462	478

Elastic for the waistband and hems, 3/8" wide, in inches (the exact elastic length is specified on the pattern):

Height, ft	Size						
	34	36	38	40	42	44	46
1 (5'1"–5'3")	130 3/4	137	142 7/8	149 1/4	155 1/2	161 3/8	167 3/4
2 (5'4"–5'6")	131 1/2	137 3/4	143 3/4	150	155 7/8	162 1/4	168 1/2
3 (5'7"–5'9")	132 1/4	138 1/4	144 1/2	150 3/4	156 3/4	163	169 1/4
4 (5'10"–6'1")	133 1/8	139	145 1/4	151 5/8	157 1/2	163 3/4	169 5/8

Height, ft	Size		
	48	50	52
1 (5'1"–5'3")	173 5/8	179 7/8	185 7/8
2 (5'4"–5'6")	174 3/8	180 3/8	186 5/8
3 (5'7"–5'9")	174 3/4	181 1/8	187 3/8
4 (5'10"–6'1")	175 5/8	181 7/8	188 1/4

4. Matching thread — 4 spools (1 spool for the sewing machine + 3 spools for the overlocker)

TOOLS AND EQUIPMENT

- sewing machine for construction
- overlocker for finishing raw edges. This may be replaced with a stretch overlock stitch or a zigzag stitch on the sewing machine (overlock or zigzag stitch width 2–3 mm, stitch length 2.5 mm)
- elastic threader (may be replaced with a safety pin)

PATTERN PIECES LIST

1. From main fabric:

- leg (part 1 and part 2) — cut 2
- pocket top lining — cut 2
- pocket bottom lining — cut 2

IMPORTANT! Don't forget to transfer all pattern markings and notches onto the fabric.

Cut the following from interfacing:

- two strips (width and length according to the pattern) to interface the pocket area on the leg piece
- two strips (width and length according to the pattern) to interface the pocket area on the pocket bottom lining piece

The interfacing strips should be cut on the straight grain (parallel to the selvedge).

SEAM ALLOWANCES

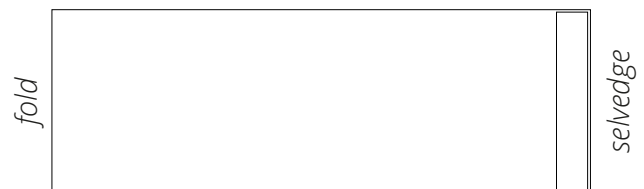
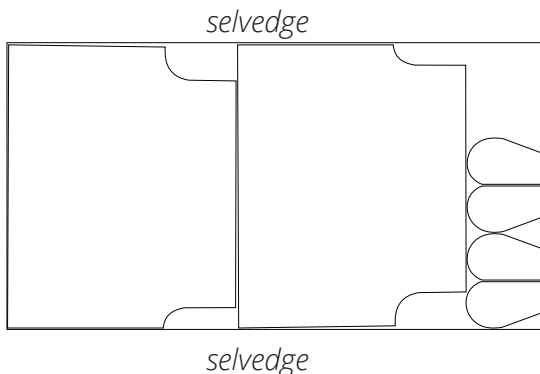
All pattern pieces include 1 cm (3/8") seam allowances.

Take this into account when laying out pattern pieces on the fabric.

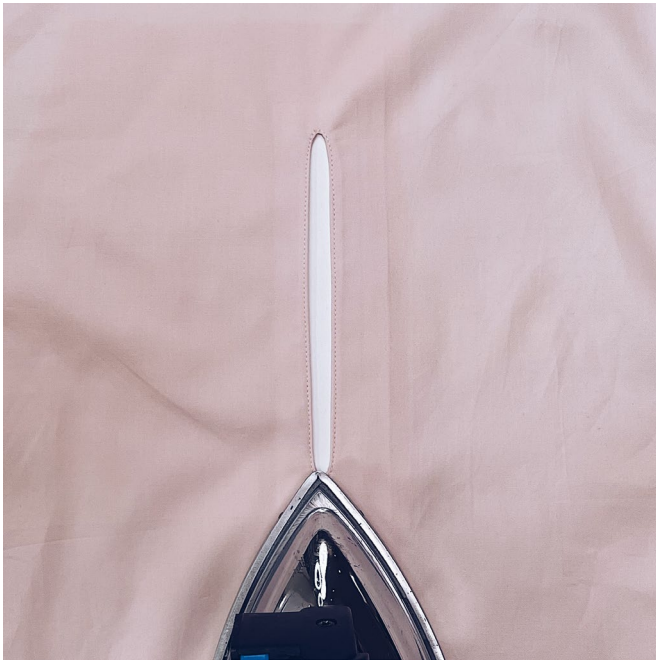
CUTTING LAYOUT

Main fabric, 140–145 cm (55–57") wide,
with a directional print/nap,
cut on a single layer,
for all sizes in all heights

Interfacing, 140 cm (55") wide, cut on
fold, for all sizes in all heights



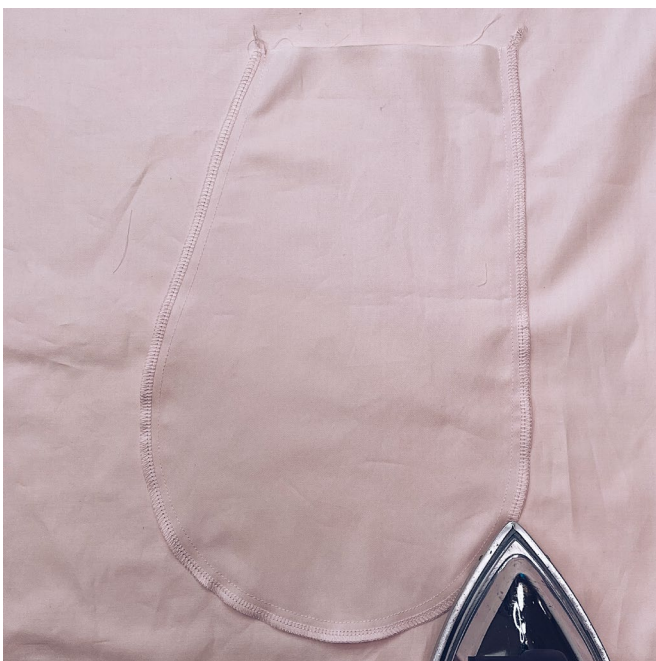
READY? LET'S GET SEWING!



Press the seam.



Place the top and bottom pocket lining pieces right sides together. Align the edges, match the notches, and pin.



Stitch on the sewing machine, backstitching at the beginning and end of the seam.

Finish the seam allowances on the overlocker, with the pocket top lining facing up.

Press the seam.