

# FROM THE FOUNDER OF THE #VIKISEWS BRAND

---

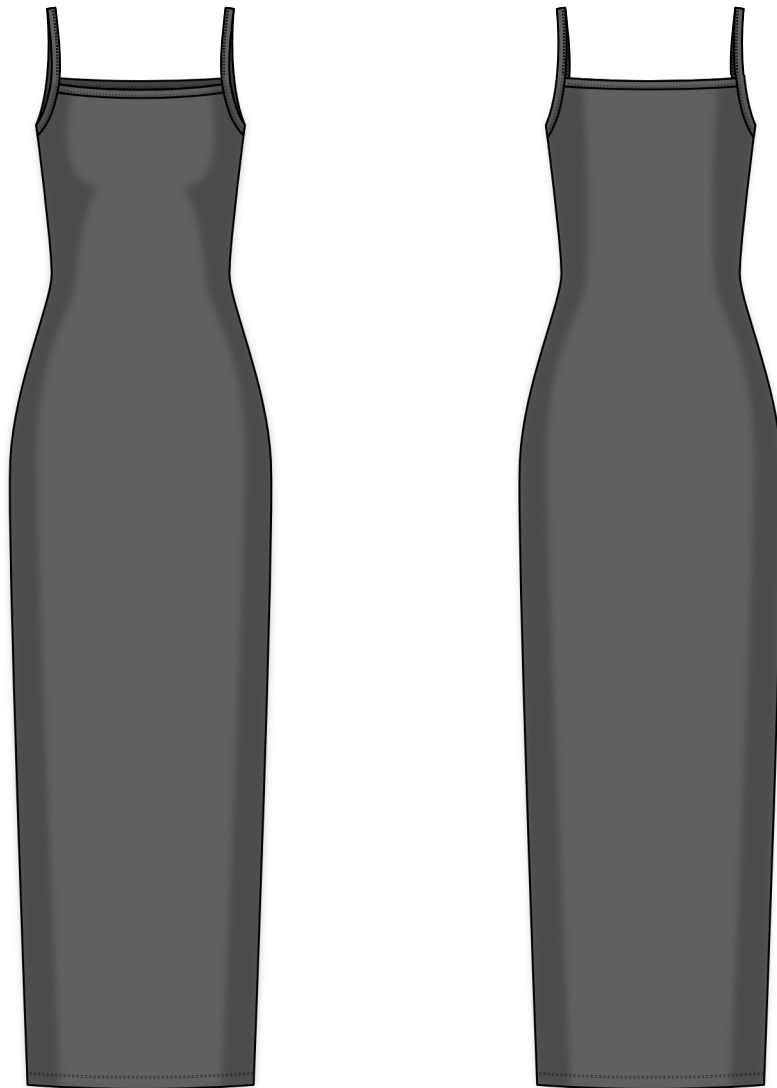


Back in 2016, when I was working on my first set of sewing instructions, I was trying to write them in such a way that even a complete beginner could easily understand and use them to create their very first garment. These instructions laid the foundation for the Vikisews brand, its vision and its mission. I wanted to create modern patterns with the utmost detailed and clear instructions.

Now, with each new collection we are constantly improving our instructions, amending them and adding more relevant details. By the time the final product reaches you, our drafters, correctors, and editors would have spent weeks perfecting every word and every photograph. If you compile a few of our instructions together, you will get a sewing manual that will assist you in sewing all kinds of garments at any difficulty level.

And I would be very happy if these instructions helped you to turn your hobby into a lifelong passion... Enjoy the process! Create your ultimate dream wardrobe! Wear your garments proudly for years to come!

If you have any questions, please contact us at [info@vikisews.com](mailto:info@vikisews.com) — we are always there to help.



## SIA PATTERN DESCRIPTION

---

Sia is a close-fitting dress with an accentuated waist. It features a deep, straight neckline both on the front and back. The armholes are finished with bindings transitioning into straps. Sia is ankle-length.



## IMPORTANT!

---

The contents of this pattern are copyright protected and belong exclusively to Vikisews. You may use Vikisews patterns for personal use. It is prohibited to share Vikisews patterns and instructions with third parties, as well as to publish patterns and instructions online for public access. **Non-compliance with the mentioned rules is a violation of the US copyright law and may result in civil liability and criminal prosecution.**

You may use Vikisews patterns for commercial use, to sew custom-made garments and/or create fashion collections, on the condition that the patterns are solely used in a manufacturing setting and are not further shared with individuals.

# TOTAL EASE ALLOWANCE

	Bust ease	Waistline ease	Hipline ease
cm	-9.1 to -10.6	-3.6 to -7.3	-6.7 to -8.7
inches	-3 5/8 to -4 1/8	-1 3/8 to -2 7/8	-2 5/8 to -3 3/8

# GARMENT LENGTH

Height, cm	Back length from waist down, cm	Height, ft	Back length from waist down, in
1 (154–160)	93	1 (5'1"–5'3")	36 5/8
2 (162–168)	96	2 (5'4"–5'6")	37 3/4
3 (170–176)	99	3 (5'7"–5'9")	39
4 (178–184)	102	4 (5'10"–6'1")	40 1/8

# SUGGESTED FABRIC

To sew this dress, choose soft, medium-weight, stretchy knit fabrics made of natural fibers, artificial fibers, blends, or synthetics.

The following fabrics are recommended: knits, rib knits, lightweight double knits. The stretch factor should be 1.5–2.

You can determine the stretch factor of the fabric yourself. Mark 10 cm (4") along the crosswise grain of the fabric, lay a ruler next to the marked section, and stretch the fabric. Divide the measurement you get by 10.

The dress in the photo is made of rib knit fabric. The fabric is medium weight, soft, and stretchy. The fiber content is 95% polyester and 5% elastane. The fabric weight is 210 g/m<sup>2</sup>.

The stretch factor is 1.8.

# FABRIC AND NOTIONS REQUIREMENTS

1. Main fabric, 140 cm wide, 180–250 g/m<sup>2</sup>, in meters:

Height, cm	Size		
	34–40	42–48	50–52
1 (154–160)	1.2 + 0.5	1.2 + 0.1	1.25 + 0.1
2 (162–168)	1.25 + 0.5	1.25 + 0.1	1.25 + 0.1
3 (170–176)	1.3 + 0.5	1.3 + 0.1	1.3 + 0.1
4 (178–184)	1.35 + 0.5	1.35 + 0.1	1.35 + 0.1

Main fabric, 55" wide, 180–250 g/m<sup>2</sup>, in yards:

Height, ft	Size		
	34–40	42–48	50–52
1 (5'1"–5'3")	1 1/4 + 1/2	1 1/4 + 1/8	1 3/8 + 1/8
2 (5'4"–5'6")	1 3/8 + 1/2	1 3/8 + 1/8	1 3/8 + 1/8
3 (5'7"–5'9")	1 3/8 + 1/2	1 3/8 + 1/8	1 3/8 + 1/8
4 (5'10"–6'1")	1 1/2 + 1/2	1 1/2 + 1/8	1 1/2 + 1/8

**IMPORTANT!** When purchasing fabric, please account for shrinkage and buy 5% more than required.

2. Matching thread — 5 spools (1 spool for the sewing machine + 4 spools for the overlocker)

## TOOLS AND EQUIPMENT

- sewing machine for construction
- overlocker for construction and finishing raw edges. This may be replaced with a stretch overlock stitch or a zigzag stitch on the sewing machine (overlock or zigzag stitch width 2–3 mm, stitch length 2.5 mm)
- coverstitch or coverlock machine for finishing the garment hem. If you don't have a coverstitch machine, it can be replaced with a twin needle on any regular sewing machine that can do a zigzag stitch

**IMPORTANT!** We recommend using specialty needles when working with knit fabrics (for example, STRETCH, SUPER STRETCH, JERSEY, etc.). When sewing, a ball-shaped needle point pushes the knit loops apart without piercing the threads.

# PATTERN PIECES LIST

---

From main fabric:

- front — cut 1 on fold
- back — cut 1 on fold
- front neck binding — cut 1
- back neck binding — cut 1
- strap — cut 2

***IMPORTANT!** Don't forget to transfer all pattern markings and notches onto the fabric.*

## SEAM ALLOWANCES

---

All pattern pieces include seam allowances as follows:

- garment hem allowance — 2 cm (3/4")
- neckline and armhole edges — 0 cm
- all other edges — 1 cm (3/8")

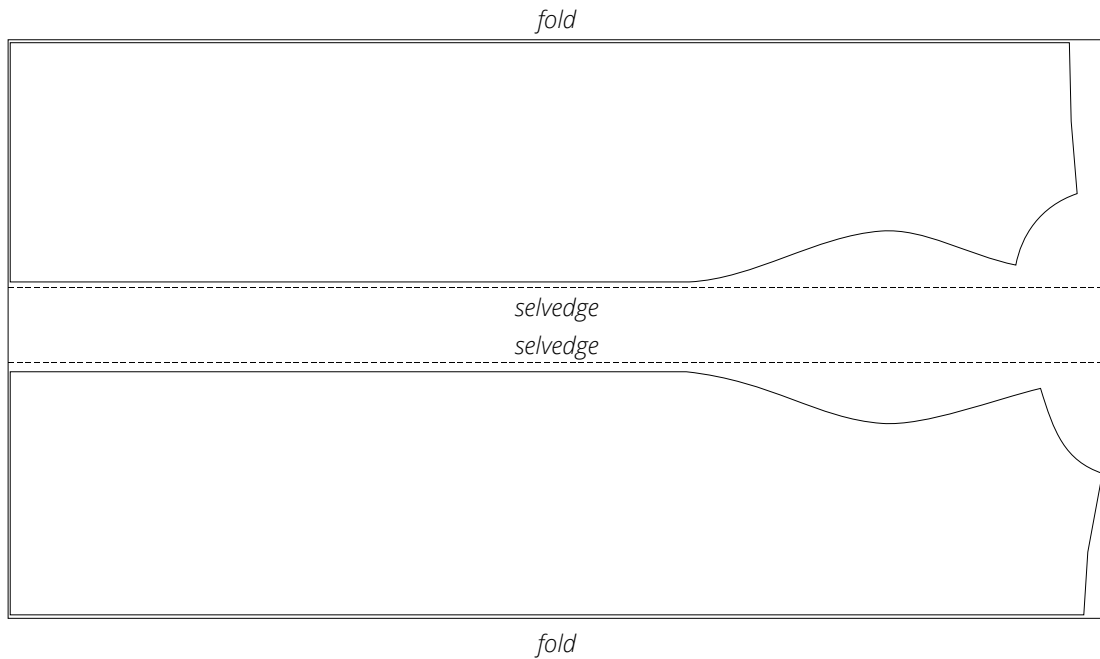
Take this into account when laying out pattern pieces on the fabric.

# CUTTING LAYOUT

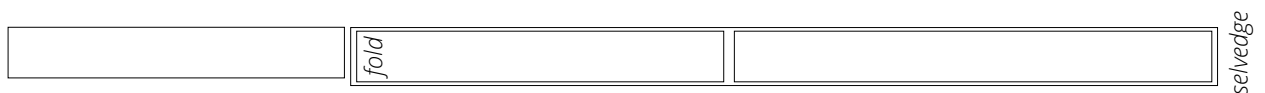
---

Main fabric, 140 cm (55") wide, with a directional print/nap, cut in two steps,  
for sizes 34-40 in all heights

Step 1: cut with two folds



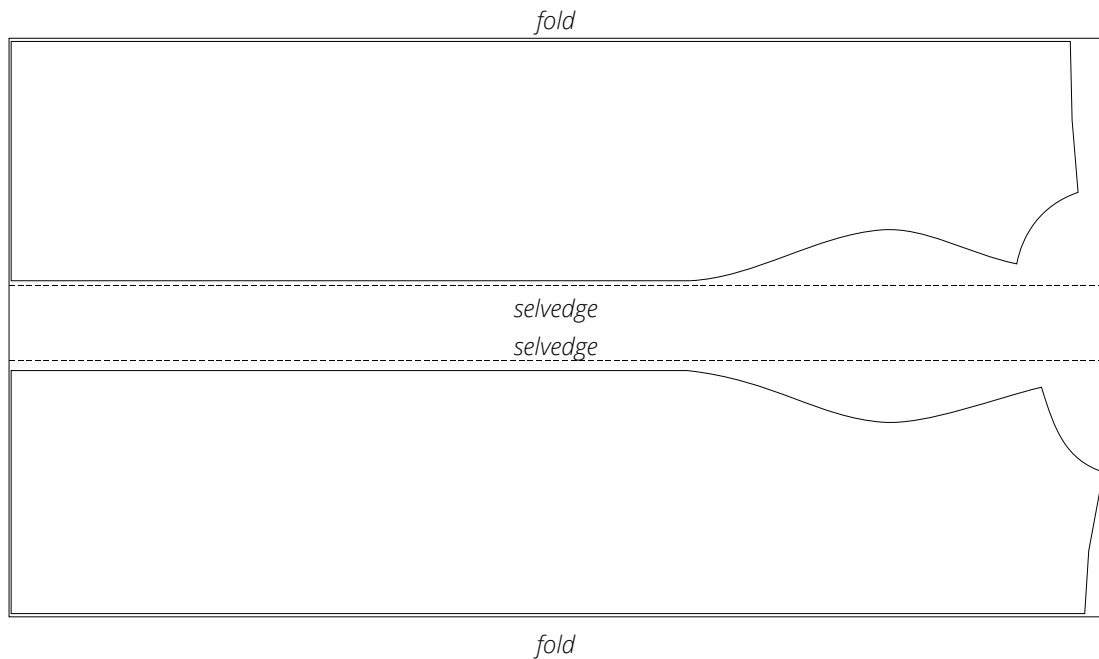
Step 2: cut on fold



**Attention!** Cut the front neck binding piece on a single layer out of the leftover fabric.

Main fabric, 140 cm (55") wide, with a directional print/nap, cut in two steps,  
for sizes 42–52 in all heights

Step 1: cut with two folds



Step 2: cut on fold



**Attention!** Cut only one each of the front neck binding and back neck binding pieces.

**READY? LET'S GET SEWING!**





Place the front neck binding right sides together with the front piece. Align the neckline edge with the binding edge, match the notches, and pin.

Stitch on the overlocker while stretching the front neck binding.



Press the seam allowances towards the front neck binding.



Press the loose edge of the front neck binding to the wrong side.