

FROM THE FOUNDER OF THE #VIKISEWS BRAND



Back in 2016, when I was working on my first set of sewing instructions, I was trying to write them in such a way that even a complete beginner could easily understand and use them to create their very first garment. These instructions laid the foundation for the Vikisews brand, its vision and its mission. I wanted to create modern patterns with the utmost detailed and clear instructions.

Now, with each new collection we are constantly improving our instructions, amending them and adding more relevant details. By the time the final product reaches you, our drafters, correctors, and editors would have spent weeks perfecting every word and every photograph. If you compile a few of our instructions together, you will get a sewing manual that will assist you in sewing all kinds of garments at any difficulty level.

And I would be very happy if these instructions helped you to turn your hobby into a lifelong passion... Enjoy the process! Create your ultimate dream wardrobe! Wear your garments proudly for years to come!

If you have any questions, please contact us at info@vikisews.com — we are always there to help.



LISBETH PATTERN DESCRIPTION

Lisbeth is a dress with an accentuated waist and a boatneck. The top is close-fitting and features princess seams. The bottom is voluminous and features side panels. There are pockets in the side seams. The dress fastens with an invisible zipper in the center back seam. Lisbeth is above-ankle length.



IMPORTANT!

The contents of this pattern are copyright protected and belong exclusively to Vikisews. You may use Vikisews patterns for personal use. It is prohibited to share Vikisews patterns and instructions with third parties, as well as to publish patterns and instructions online for public access. **Non-compliance with the mentioned rules is a violation of the US copyright law and may result in civil liability and criminal prosecution.**

You may use Vikisews patterns for commercial use, to sew custom-made garments and/or create fashion collections, on the condition that the patterns are solely used in a manufacturing setting and are not further shared with individuals.

TOTAL EASE ALLOWANCE

	Bust ease	Waistline ease (estimated)	Hipline ease
cm	0.7–3.3	0	14.3–19.1
inches	1/4–1 1/4	0	5 5/8–7 1/2

GARMENT LENGTH

Height, cm	Back length from waist down, cm	Height, ft	Back length from waist down, in
1 (154–160)	87	1 (5'1"–5'3")	34 1/4
2 (162–168)	90	2 (5'4"–5'6")	35 3/8
3 (170–176)	93	3 (5'7"–5'9")	36 5/8
4 (178–184)	96	4 (5'10"–6'1")	37 3/4

SUGGESTED FABRIC

To sew this dress, choose dress-weight fabrics with the following properties: medium weight, pliable, soft, non-stretch or low-stretch, opaque. The fiber content can include natural fibers, artificial fibers, blends, or synthetics.

The following fabrics are recommended: dress-weight viscose, ramie, linen, cotton, lace.

Attention! We do not recommend stretchy knit fabrics and lightweight sheer fabrics (chiffon, organza, stretch lace).

The dress in the photo is made of two fabrics: lace and cotton shirting.

Outer layer: lace. The fabric is medium weight, pliable, soft, and low-stretch. The fiber content is 100% cotton. The fabric weight is 170 g/m².

Inner layer: shirting. The fabric is medium weight, pliable, soft, and low-stretch. The fiber content is 60% cotton and 40% polyester. The fabric weight is 130 g/m².

FABRIC AND NOTIONS REQUIREMENTS

1. Main fabric 1 (outer layer), 140 cm wide, cut in one direction, in meters:

Height, cm	Size									
	34	36	38	40	42	44	46	48	50	52
1 (154–160)	1.95	2	2.1	2.15	2.15	2.2	2.2	2.25	2.35	2.4
2 (162–168)	2.05	2.1	2.2	2.25	2.25	2.25	2.4	2.45	2.5	2.55
3 (170–176)	2.15	2.2	2.3	2.4	2.45	2.5	2.55	2.55	2.6	2.6
4 (178–184)	2.25	2.3	2.45	2.5	2.55	2.6	2.6	2.65	2.65	2.7

Main fabric 1 (outer layer), 55" wide, cut in one direction, in yards:

Height, ft	Size									
	34	36	38	40	42	44	46	48	50	52
1 (5'1"–5'3")	2 1/8	2 1/8	2 1/4	2 3/8	2 3/8	2 3/8	2 3/8	2 1/2	2 5/8	2 5/8
2 (5'4"–5'6")	2 1/4	2 1/4	2 3/8	2 1/2	2 1/2	2 1/2	2 5/8	2 5/8	2 3/4	2 3/4
3 (5'7"–5'9")	2 3/8	2 3/8	2 1/2	2 5/8	2 5/8	2 3/4	2 3/4	2 3/4	2 7/8	2 7/8
4 (5'10"–6'1")	2 1/2	2 1/2	2 5/8	2 3/4	2 3/4	2 7/8	2 7/8	2 7/8	2 7/8	3

2. Main fabric 2 (inner layer), 140 cm wide, with a directional print/nap, in meters:

Height, cm	Size									
	34	36	38	40	42	44	46	48	50	52
1 (154–160)	2.25	2.3	2.4	2.45	2.45	2.55	2.6	2.6	2.7	2.75
2 (162–168)	2.3	2.35	2.45	2.45	2.5	2.6	2.65	2.7	2.75	2.8
3 (170–176)	2.35	2.4	2.5	2.55	2.55	2.65	2.75	2.75	2.85	2.85
4 (178–184)	2.45	2.45	2.55	2.6	2.65	2.7	2.85	2.9	2.95	2.95

Main fabric 2 (inner layer), 55" wide, with a directional print/nap, in yards:

Height, ft	Size									
	34	36	38	40	42	44	46	48	50	52
1 (5'1"–5'3")	2 1/2	2 1/2	2 5/8	2 5/8	2 5/8	2 3/4	2 7/8	2 7/8	3	3
2 (5'4"–5'6")	2 1/2	2 5/8	2 5/8	2 5/8	2 3/4	2 7/8	2 7/8	3	3	3
3 (5'7"–5'9")	2 5/8	2 5/8	2 3/4	2 3/4	2 3/4	2 7/8	3	3	3 1/8	3 1/8
4 (5'10"–6'1")	2 5/8	2 5/8	2 3/4	2 7/8	2 7/8	3	3 1/8	3 1/8	3 1/4	3 1/4

IMPORTANT! When purchasing fabric, please account for shrinkage and buy 5% more than required.

3. Lightweight interfacing, knit or woven, 140 cm (55") wide, for all sizes in all heights — 0.3 m (3/8 yd)
4. Stitched bias-cut fusible stay tape with stitch reinforcement, 1 cm (3/8") wide — 2 m (2 1/8 yd)
5. Stitched straight-grain fusible stay tape, 1 cm (3/8") wide — 0.5 m (1/2 yd)
6. One invisible zipper, 60 cm (23 5/8") long, for all sizes in all heights
7. Matching thread — 5 spools (1 spool for the sewing machine + 4 spools for the overlocker)

TOOLS AND EQUIPMENT

- sewing machine for construction
- overlocker for finishing raw edges. This may be replaced with a stretch overlock stitch or a zigzag stitch on the sewing machine (overlock or zigzag stitch width 2–3 mm, stitch length 2.5 mm)
- one-sided foot for the sewing machine to attach the zipper

PATTERN PIECES LIST

1. From main fabric 1:

- center front — cut 1 on fold
- top side front — cut 2
- center back — cut 2
- top side back — cut 2
- bottom side front — cut 2
- bottom side back — cut 2

2. From main fabric 2:

- center front — cut 1 on fold
- top side front — cut 2
- center back — cut 2
- top side back — cut 2
- bottom side front — cut 2
- bottom side back — cut 2
- front neck facing — cut 1 on fold
- back neck facing — cut 2
- pocket lining — cut 4

IMPORTANT! Don't forget to transfer all pattern markings and notches onto the fabric.

3. From interfacing:

- front neck facing — cut 1 on fold
- back neck facing — cut 2

SEAM ALLOWANCES

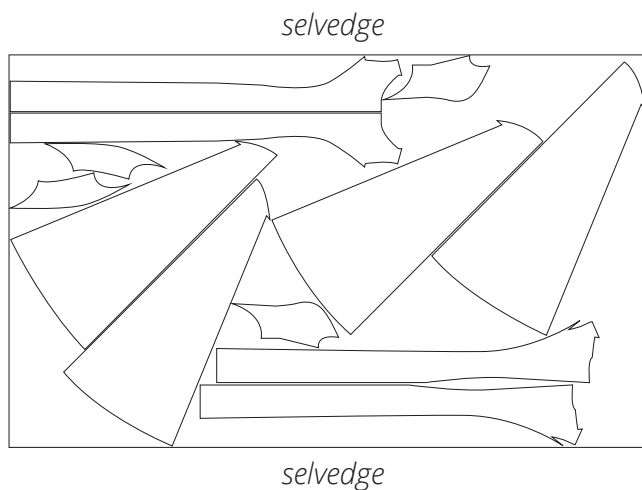
All pattern pieces include seam allowances as follows:

- center seam allowance on the center back — 1.5 cm (5/8")
- all other edges — 1 cm (3/8")

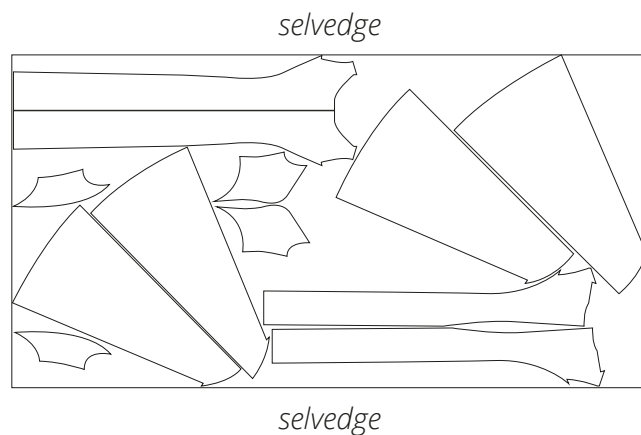
Take this into account when laying out pattern pieces on the fabric.

CUTTING LAYOUT

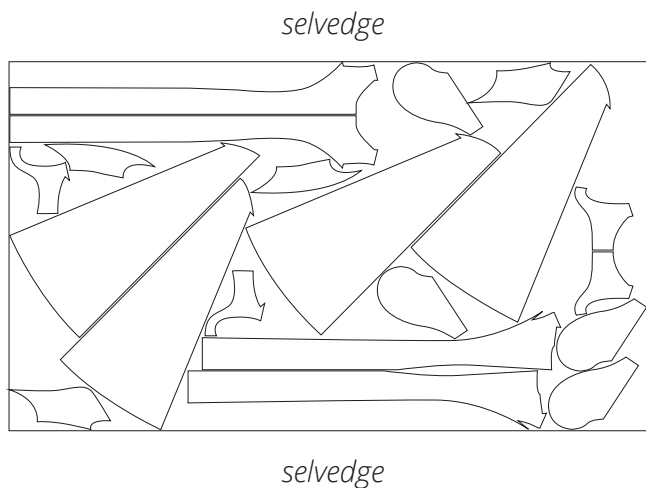
Main fabric 1, 140 cm (55") wide,
cut in different directions on a single layer,
for sizes 34–36 in all heights



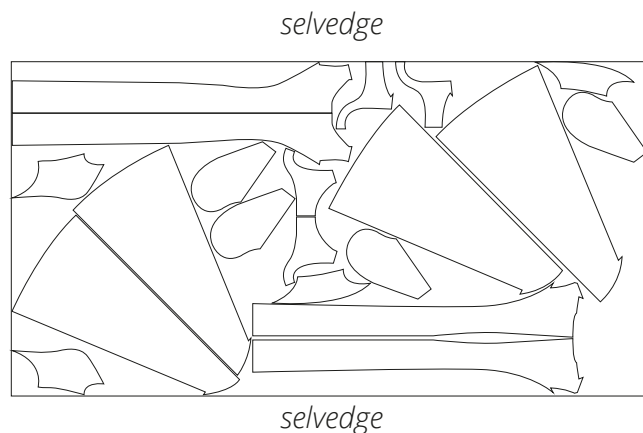
Main fabric 1, 140 cm (55") wide,
cut in different directions on a single layer,
for sizes 38–52 in all heights



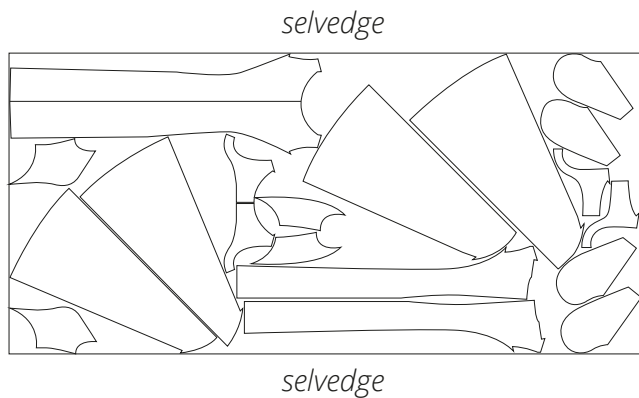
Main fabric 2, 140 cm (55") wide, with a non-directional print/no nap, cut on a single layer, for sizes 34–36 in all heights



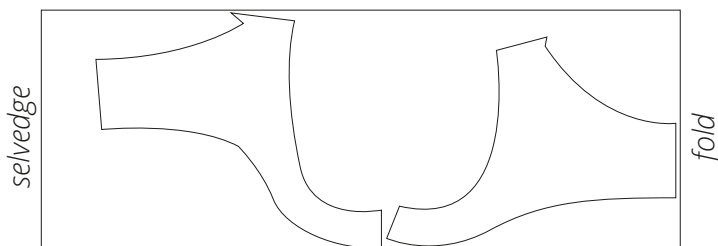
Main fabric 2, 140 cm (55") wide, with a non-directional print/no nap, cut on a single layer, for sizes 38–44 in all heights



Main fabric 2, 140 cm (55") wide, with a non-directional print/no nap, cut on a single layer, for sizes 46–52 in all heights



Interfacing, 140 cm (55") wide, cut on fold, for all sizes in all heights



READY? LET'S GET SEWING!



Machine-stitch, backstitching at the beginning and end of the seam.

Overlock the seam allowances, with the top side front piece facing up.

Press the seam flat.



Press the seam allowances towards the top side back piece.



Place the outer bottom side front piece wrong side down to the right side of the inner bottom side front piece. Pin.