

FROM THE FOUNDER OF THE #VIKISEWS BRAND

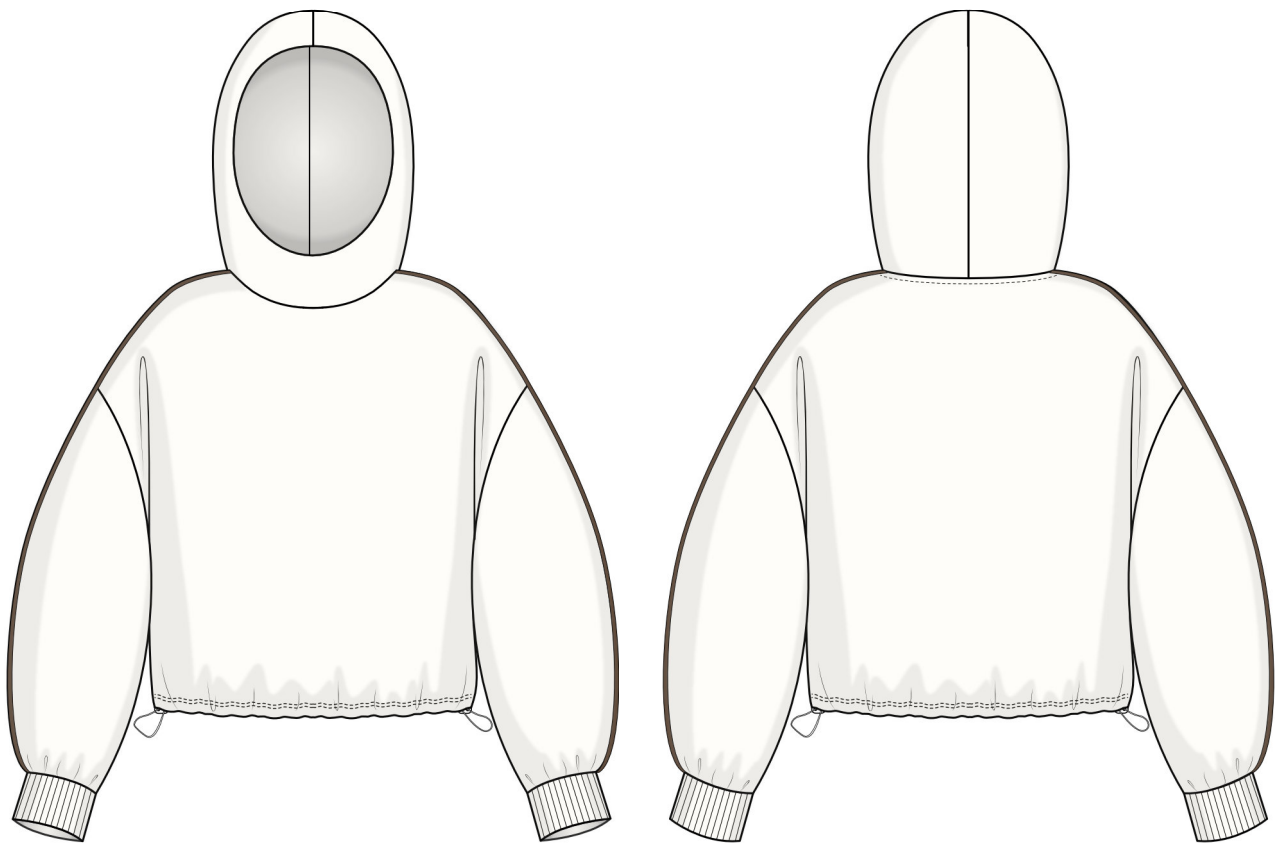


Back in 2016, when I was working on my first set of sewing instructions, I was trying to write them in such a way that even a complete beginner could easily understand and use them to create their very first garment. These instructions laid the foundation for the Vikisews brand, its vision and its mission. I wanted to create modern patterns with the utmost detailed and clear instructions.

Now, with each new collection we are constantly improving our instructions, amending them and adding more relevant details. By the time the final product reaches you, our drafters, correctors, and editors would have spent weeks perfecting every word and every photograph. If you compile a few of our instructions together, you will get a sewing manual that will assist you in sewing all kinds of garments at any difficulty level.

And I would be very happy if these instructions helped you to turn your hobby into a lifelong passion... Enjoy the process! Create your ultimate dream wardrobe! Wear your garments proudly for years to come!

If you have any questions, please contact us at info@vikisews.com — we are always there to help.



FARRAH PATTERN DESCRIPTION

Farrah is a straight-cut, loose-fitting hoodie. It features a stand collar that transitions into a lined, semi-fitted hood with a center seam. The hoodie has a dropped shoulder line and long, loose-fitting, shirt-style sleeves finished with cuffs. The shoulder seam and overarm seam are trimmed with piping. The hem is finished with a drawstring casing with an adjustable elastic cord secured by stoppers at the side seams. The hoodie is below-waist length.



IMPORTANT!

The contents of this pattern are copyright protected and belong exclusively to Vikisews. You may use Vikisews patterns for personal use. It is prohibited to share Vikisews patterns and instructions with third parties, as well as to publish patterns and instructions online for public access. **Non-compliance with the mentioned rules is a violation of the US copyright law and may result in civil liability and criminal prosecution.**

You may use Vikisews patterns for commercial use, to sew custom-made garments and/or create fashion collections, on the condition that the patterns are solely used in a manufacturing setting and are not further shared with individuals.

TOTAL EASE ALLOWANCE

	Bust ease	Waistline ease	Hipline ease (estimated)	Upper arm ease
cm	68–60	85.3–77.4	56.8–48.7	37–30.2
inches	26 3/4–23 5/8	33 5/8–30 1/2	22 3/8–19 1/8	14 5/8–11 7/8

GARMENT LENGTH, SLEEVE LENGTH

Height, cm	Back length, cm	Sleeve length including shoulder width and cuff, cm
1 (154–160)	49.3–52.2	73.7–77.4
2 (162–168)	51.3–54.3	75.7–79.4
3 (170–176)	53.3–56.3	77.7–81.4
4 (178–184)	55.3–58.3	79.7–83.4

Height, ft	Back length, in	Sleeve length including shoulder width and cuff, in
1 (5'1"–5'3")	19 3/8–20 1/2	29–30 1/2
2 (5'4"–5'6")	20 1/4–21 3/8	29 3/4–31 1/4
3 (5'7"–5'9")	21–22 1/8	30 5/8–32
4 (5'10"–6'1")	21 3/4–23	31 3/8–32 7/8

SUGGESTED FABRIC

To sew this hoodie, choose soft, non-stretch or low-stretch, medium-weight knit fabrics made of natural fibers, artificial fibers, blends, or synthetics.

Recommended fabrics: French terry, sweatshirt fleece, fleece.

As an additional fabric 1 (cuffs), choose rib knits.

As an additional fabric 2 (hood lining), choose jersey knits or interlock knits.

IMPORTANT! We do not recommend using lightweight fabrics.

The garment in the photos is made of thick French terry. The fabric is medium weight, soft, and low stretch. The fiber content is 80% cotton and 20% polyester. The fabric weight is 340 g/m².

The cuffs are made of a rib knit fabric. The fabric is heavyweight and medium stretch. The fiber content is 95% cotton and 5% elastane. The fabric weight is 380 g/m².

The hood lining is made of jersey. The fabric is soft and low stretch. The fiber content is 95% cotton and 5% elastane. The fabric weight is 210 g/m².

FABRIC AND NOTIONS REQUIREMENTS

1.1. Main fabric, 140 cm wide, with a directional print/nap, in meters:

Height, cm	Size			
	XS	S	M-L	XL
1 (154-160)	1.55	1.75	1.85	1.85
2 (162-168)	1.6	1.8	1.9	1.9
3 (170-176)	1.65	1.85	1.95	2
4 (178-184)	1.7	1.9	2	2.05

Main fabric, 55" wide, with a directional print/nap, in yards:

Height, ft	Size			
	XS	S	M-L	XL
1 (5'1"-5'3")	1 3/4	1 7/8	2	2
2 (5'4"-5'6")	1 3/4	2	2 1/8	2 1/8
3 (5'7"-5'9")	1 3/4	2	2 1/8	2 1/8
4 (5'10"-6'1")	1 7/8	2 1/8	2 1/8	2 1/4

1.2. Main fabric, 180 cm wide, with a directional print/nap, in meters:

Height, cm	Size		
	XS	S-L	XL
1 (154–160)	1.3	1.35	1.4
2 (162–168)	1.4	1.4	1.45
3 (170–176)	1.4	1.45	1.5
4 (178–184)	1.45	1.5	1.55

Main fabric, 70" wide, with a directional print/nap, in yards:

Height, ft	Size		
	XS	S-L	XL
1 (5'1"–5'3")	1 3/8	1 1/2	1 1/2
2 (5'4"–5'6")	1 1/2	1 1/2	1 5/8
3 (5'7"–5'9")	1 1/2	1 5/8	1 5/8
4 (5'10"–6'1")	1 5/8	1 5/8	1 3/4

2. Additional fabric 1 (cuffs), 110 cm (43") wide, with a directional print/nap, for all sizes and heights – 0.2 m (1/4 yd).

3. Additional fabric 2 (hood lining), 140 cm (55") wide, with a directional print/nap, for all heights:

Size	XS-M	L-XL
meters	0.45	0.5
yards	1/2	1/2

IMPORTANT! When purchasing fabric, please account for shrinkage and buy 5% more than required.

4. Twill tape, 1 cm (3/8") wide, for all sizes and heights – 40 cm (15 3/4").

5. Decorative satin piping, 1.2 cm wide, for all sizes, in meters:

Decorative satin piping, 1/2" wide, for all sizes, in yards:

Height, cm	Length, m
1 (154–160)	1.5
2 (162–168)	1.55
3 (170–176)	1.6
4 (178–184)	1.65

Height, ft	Length, yd
1 (5'1"–5'3")	1 5/8
2 (5'4"–5'6")	1 3/4
3 (5'7"–5'9")	1 3/4
4 (5'10"–6'1")	1 3/4

6. Round elastic cord, 2–3 mm (1/8") in diameter, for all heights:

Size	XS	S	M	L	XL
meters	1.7	1.75	1.8	1.85	1.9
yards	1 7/8	1 7/8	2	2	2 1/8

7. Four rectangles cut from lightweight interfacing, each measuring 3.5×2.5 cm (1 3/8×1").

8. Two double-hole stoppers for elastic cord.

9. Matching thread – 5 spools (1 spool for the sewing machine + 4 spools for the overlocker / 3 spools for the coverstitch machine).

TOOLS AND EQUIPMENT

- sewing machine for construction
- buttonhole foot for the sewing machine
- one-sided foot for the sewing machine (optional)
- overlocker for construction and finishing raw edges. It can be replaced with a stretch overlock stitch or a zigzag stitch on the sewing machine (overlock or zigzag stitch width 2–3 mm, stitch length 2.5 mm).
- coverstitch or coverlock machine for finishing the garment hem. It can be replaced with a twin needle on a regular sewing machine that can do a zigzag stitch.
- large-eye needle or latch hook.

IMPORTANT! We recommend using specialty needles when working with knit fabrics (for example, STRETCH, SUPER STRETCH, JERSEY, etc.). These are ballpoint needles, so they part the threads of the fabric you are stitching rather than piercing them.

PATTERN PIECES LIST

1. From main fabric:

- front – cut 1 on fold
- back – cut 1 on fold
- front sleeve – cut 2
- back sleeve – cut 2
- hood – cut 1 on fold
- hood facing – cut 1 on fold

2. From additional fabric 1:

- cuff – cut 2

3. From additional fabric 2:

- hood lining – cut 2

4. Templates:

- loop template – cut 1
- back neck binding template – cut 1

***IMPORTANT!** Don't forget to transfer all pattern markings and notches onto the fabric.*

SEAM ALLOWANCES

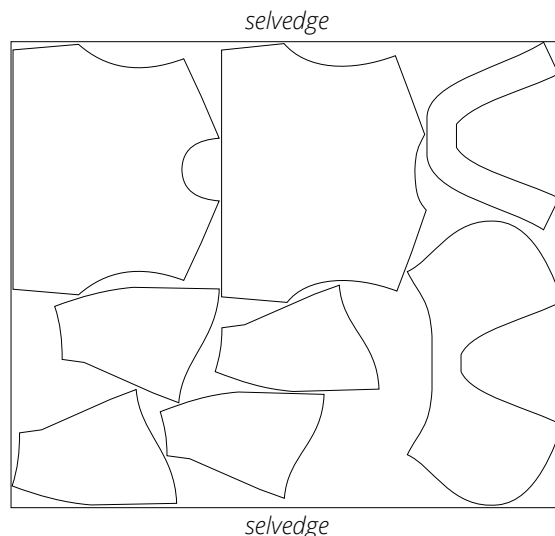
All pattern pieces include seam allowances as follows:

- front and back garment hem allowance – 2.5 cm (1")
- all other edges – 1 cm (3/8")

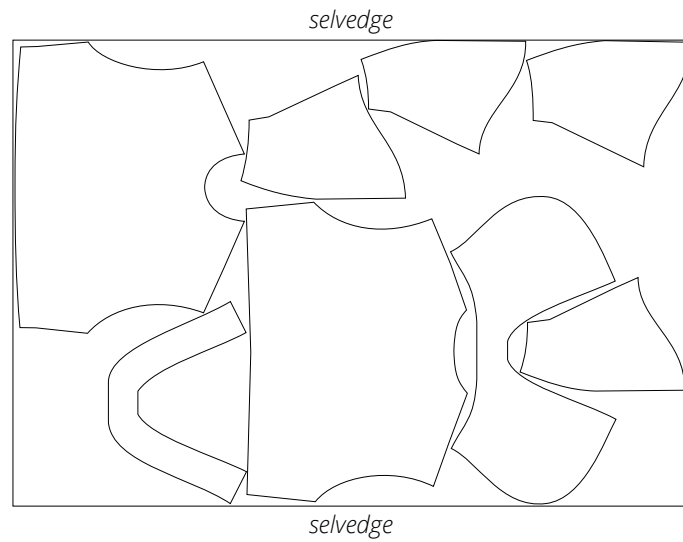
Take this into account when laying out pattern pieces on the fabric.

CUTTING LAYOUT

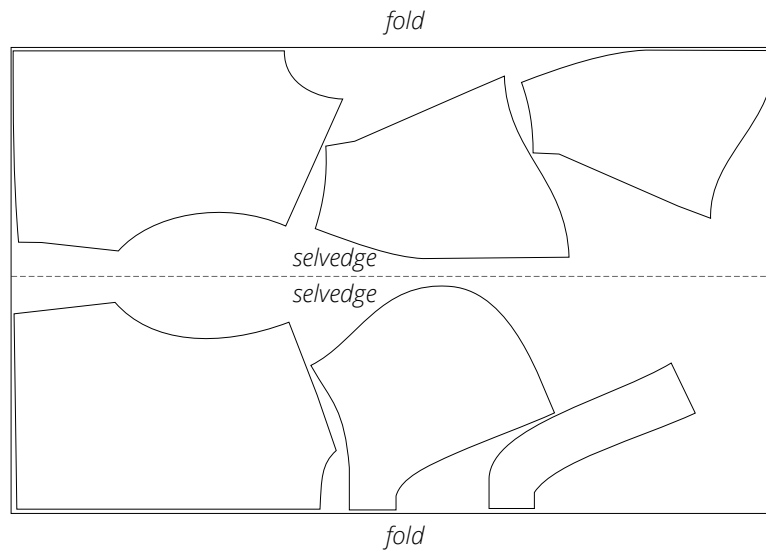
Main fabric, 140 cm (55") wide, with a directional print/nap, cut on a single layer, for size XS in all heights



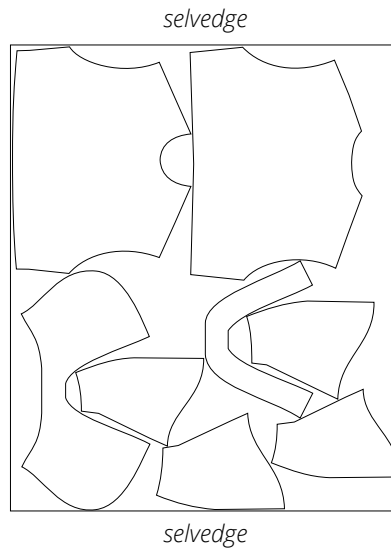
Main fabric, 140 cm (55") wide, with a directional print/nap,
cut on a single layer, for sizes S-XL in all heights



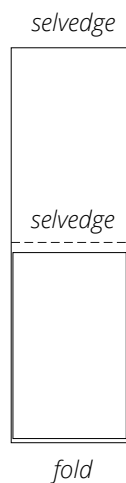
Main fabric, 180 cm (70") wide, with a directional print/nap,
cut with two folds, for sizes XS-S in all heights



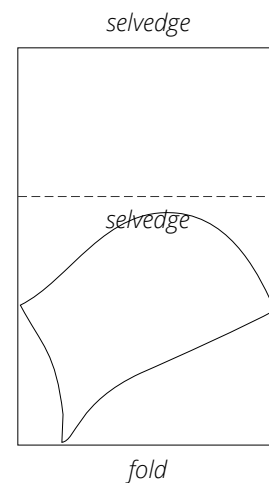
Main fabric, 180 cm (70") wide, with a directional print/nap, cut on a single layer, for sizes M-XL in all heights



Additional fabric 1, 110 cm (43") wide, with a directional print/nap, cut with one offset fold, for all sizes and heights



Additional fabric 2, 140 cm (55") wide, with a directional print/nap, cut with one offset fold, for all sizes and heights



READY? LET'S GET SEWING!



Place the front and back pieces right sides together. Align and pin the side seam edges, matching the notches.



Stitch the side seams on the overlocker, keeping the front piece facing up.

Use a 4-thread overlocker for this step, as well as for the following similar steps. You can replace the overlocker with a stretch or zigzag stitch on your sewing machine.

Important! The pattern pieces include 1 cm (3/8") seam allowances. The overlocker stitch is narrower than the seam allowance. You can either trim the seam allowances beforehand or let the overlocker cut off the extra fabric while stitching.



Press the seams flat.