

FROM THE FOUNDER OF THE #VIKISEWS BRAND

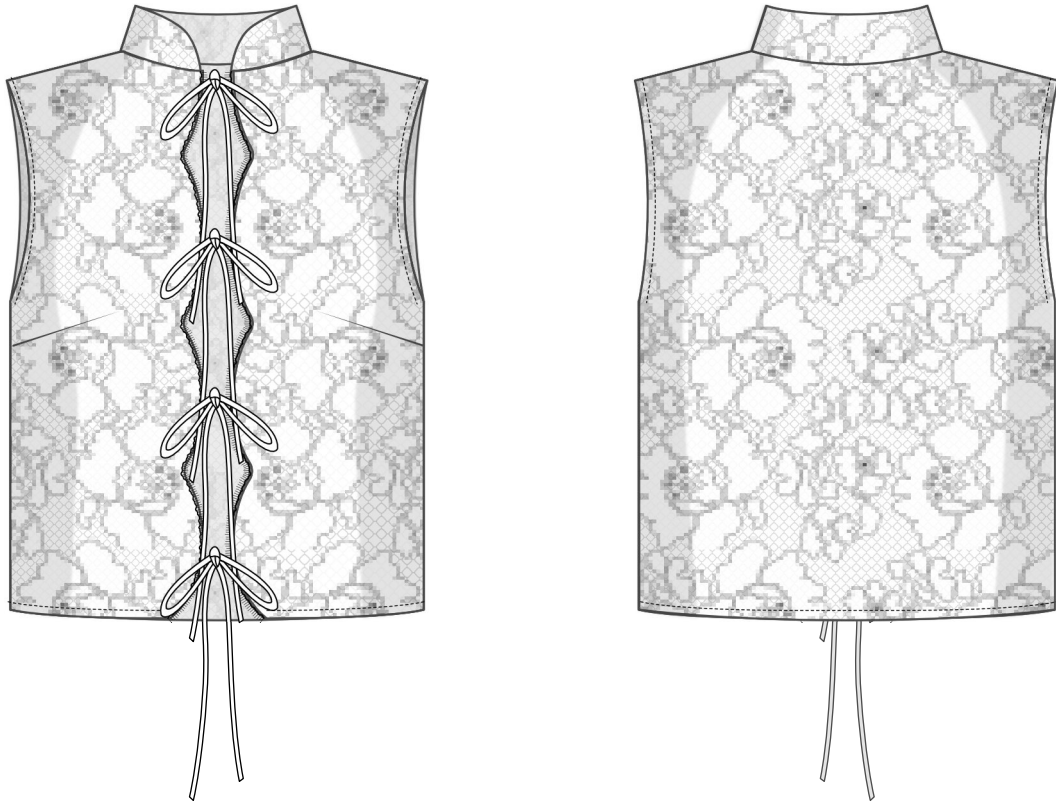


Back in 2016, when I was working on my first set of sewing instructions, I was trying to write them in such a way that even a complete beginner could easily understand and use them to create their very first garment. These instructions laid the foundation for the Vikisews brand, its vision and its mission. I wanted to create modern patterns with the utmost detailed and clear instructions.

Now, with each new collection we are constantly improving our instructions, amending them and adding more relevant details. By the time the final product reaches you, our drafters, correctors, and editors would have spent weeks perfecting every word and every photograph. If you compile a few of our instructions together, you will get a sewing manual that will assist you in sewing all kinds of garments at any difficulty level.

And I would be very happy if these instructions helped you to turn your hobby into a lifelong passion... Enjoy the process! Create your ultimate dream wardrobe! Wear your garments proudly for years to come!

If you have any questions, please contact us at info@vikisews.com — we are always there to help.



FIAMMA PATTERN DESCRIPTION

Fiamma is a semi-fitted, straight-cut blouse with a stand collar. The front is shaped with bust darts. The center front edges are beautifully curved thanks to the scalloped lace and feature four pairs of functional sewn-on ties. The bottom and armscye edges are finished with binding. Fiamma is hip-length.



IMPORTANT!

The contents of this pattern are copyright protected and belong exclusively to Vikisews. You may use Vikisews patterns for personal use. It is prohibited to share Vikisews patterns and instructions with third parties, as well as to publish patterns and instructions online for public access. **Non-compliance with the mentioned rules is a violation of the US copyright law and may result in civil liability and criminal prosecution.**

You may use Vikisews patterns for commercial use, to sew custom-made garments and/or create fashion collections, on the condition that the patterns are solely used in a manufacturing setting and are not further shared with individuals.

TOTAL EASE ALLOWANCE

	Bust ease	Waistline ease
cm	8.7–5.9	31.1–31.2
inches	3 3/8–2 3/8	12 1/4

GARMENT LENGTH

Height, cm	Center back length, cm	Height, ft	Center back length, in
1 (154–160)	42.7–48.1	1 (5'1"–5'3")	16 3/4–18 7/8
2 (162–168)	45.1–50.6	2 (5'4"–5'6")	17 3/4–19 7/8
3 (170–176)	47.6–53.1	3 (5'7"–5'9")	18 3/4–20 7/8
4 (178–184)	50.1–55.5	4 (5'10"–6'1")	19 3/4–21 7/8

SUGGESTED FABRIC

To sew this blouse, choose lace fabrics with the following properties:

- soft, lightweight or medium weight, low-stretch.
- the fiber content can include natural fibers (cotton), artificial fibers (viscose), blends (cotton + polyester, etc.), and synthetics (polyester, polyester + elastane).

The following fabrics are recommended: allover lace fabrics with or without a scalloped edge, macramé lace, medium-weight guipure lace. The fabric should be low- to medium-stretch.

Attention! We do not recommend stretchy, non-stretch or very lightweight fabrics.

The blouse in the photos is made of scalloped macramé lace. The fiber content is 100% cotton. The fabric weight is 165 g/m².

For the underlining layer of the collar, we used organza. The fiber content is 100% silk. The fabric is medium weight, without stretch.

For the tie pieces, we used batiste. The fiber content is 100% cotton. The fabric weight is 60 g/m².

FABRIC AND NOTIONS REQUIREMENTS

1. Main fabric (double scallop lace fabric), 130 cm wide, with a directional print, 150–200 g/m², in meters:

Height, cm	Size						
	34–36	38	40	42	44–46	48	50–52
1 (154–160)	0.5	0.55	0.55	0.6	0.6	0.65	0.9
2 (162–168)	0.55	0.55	0.6	0.6	0.65	0.65	0.9
3 (170–176)	0.55	0.6	0.6	0.65	0.65	0.7	0.95
4 (178–184)	0.6	0.6	0.65	0.65	0.7	0.7	1

Main fabric (double scallop lace fabric), 51" wide, with a directional print, 150–200 g/m², in yards:

Height, ft	Size						
	34–36	38	40	42	44–46	48	50–52
1 (5'1"–5'3")	1/2	5/8	5/8	5/8	5/8	3/4	1
2 (5'4"–5'6")	5/8	5/8	5/8	5/8	3/4	3/4	1
3 (5'7"–5'9")	5/8	5/8	5/8	3/4	3/4	3/4	1
4 (5'10"–6'1")	5/8	5/8	3/4	3/4	3/4	3/4	1 1/8

2. Main fabric, 140 cm wide, with a directional print, 150–210 g/m², in meters:

Height, cm	Size			
	34–36	38–42	44–48	50–52
1 (154–160)	0.55	0.6	0.6	0.65
2 (162–168)	0.55	0.6	0.65	0.65
3 (170–176)	0.6	0.65	0.65	0.7
4 (178–184)	0.6	0.65	0.7	0.7

Main fabric, 55" wide, with a directional print, 150–210 g/m², in yards:

Height, ft	Size			
	34–36	38–42	44–48	50–52
1 (5'1"–5'3")	5/8	5/8	5/8	3/4
2 (5'4"–5'6")	5/8	5/8	3/4	3/4
3 (5'7"–5'9")	5/8	3/4	3/4	3/4
4 (5'10"–6'1")	5/8	3/4	3/4	3/4

3. Additional fabric 1 (organza), 145 cm (57") wide, 20–35 g/m², for all sizes in all heights — 10 cm (4")

4. Additional fabric 2 (batiste), 150 cm wide, 60–80 g/m², in meters:

Height, cm	Size				
	34–36	38–40	42–46	48–50	52
1 (154–160)	0.7	0.75	0.85	0.9	0.95
2 (162–168)	0.7	0.75	0.85	0.9	0.95
3 (170–176)	0.7	0.75	0.85	0.9	0.95
4 (178–184)	0.7	0.75	0.85	0.9	0.95

Additional fabric 2 (batiste), 59" wide, 60–80 g/m², in yards:

Height, ft	Size		
	34–36	38–46	44–52
1 (5'1"–5'3")	3/4	7/8	1
2 (5'4"–5'6")	3/4	7/8	1
3 (5'7"–5'9")	3/4	7/8	1
4 (5'10"–6'1")	3/4	7/8	1

IMPORTANT! When purchasing fabric, please account for shrinkage and buy 5% more than required.

5. Matching thread — 5 spools (1 spool for the sewing machine + 4 spools for the overlocker)

TOOLS AND EQUIPMENT

- sewing machine for construction
- overlocker for finishing raw edges. This may be replaced with a stretch overlock stitch or a zigzag stitch on the sewing machine (overlock or zigzag stitch width 2–3 mm, stitch length 2.5 mm)
- stitch-in-the-ditch foot for the sewing machine (optional)
- bias tape maker

PATTERN PIECES LIST

1. From main fabric:

- front — cut 2
- back — cut 1 on fold
- collar — cut 1

***IMPORTANT!** Don't forget to transfer all pattern markings and notches onto the fabric.*

2. From additional fabric 1 (organza):

- collar — cut 1

3. From additional fabric 2 (batiste):

- shoulder seam binding — cut 2
- side seam binding — cut 2
- armscye binding — cut 2
- hem binding — cut 1
- front edge binding — cut 2
- tie — cut 8

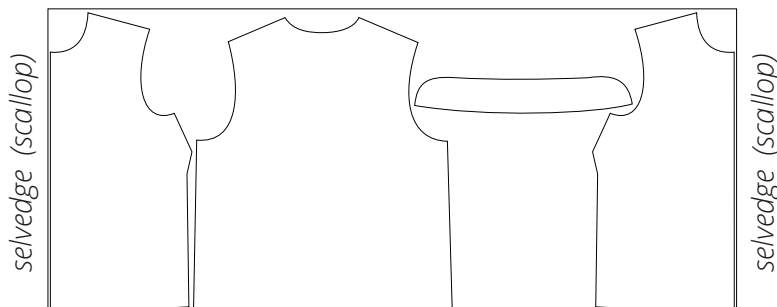
SEAM ALLOWANCES

All pattern pieces include 1 cm (3/8") seam allowances.

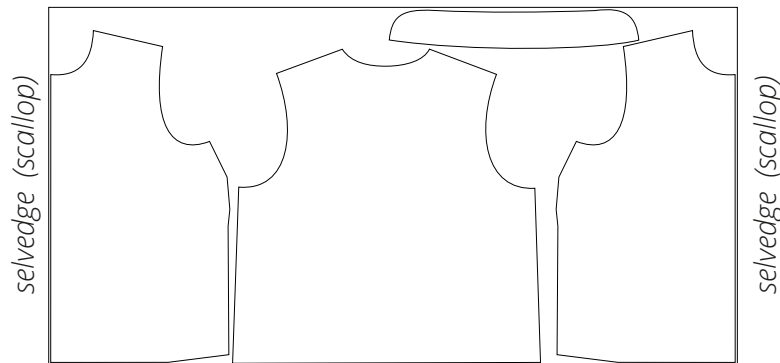
Take this into account when laying out pattern pieces on the fabric.

CUTTING LAYOUT

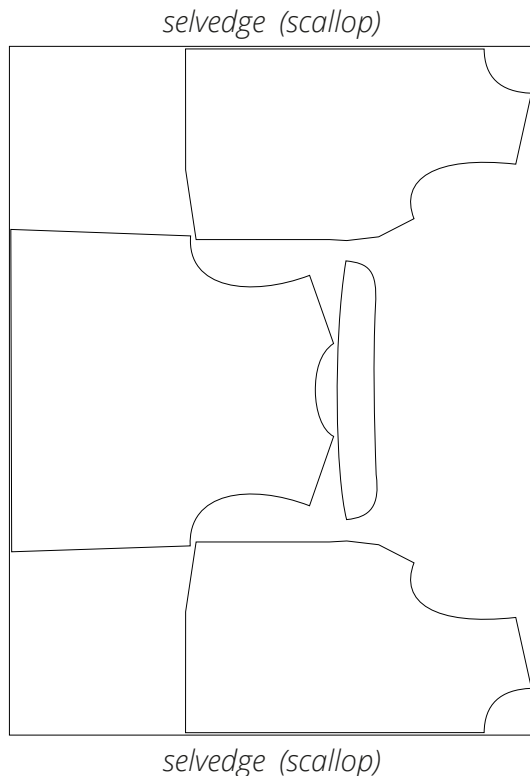
Main fabric (double scallop lace fabric), 130 cm (51") wide, with a directional print, cut on a single layer, for sizes 34–36 in all heights



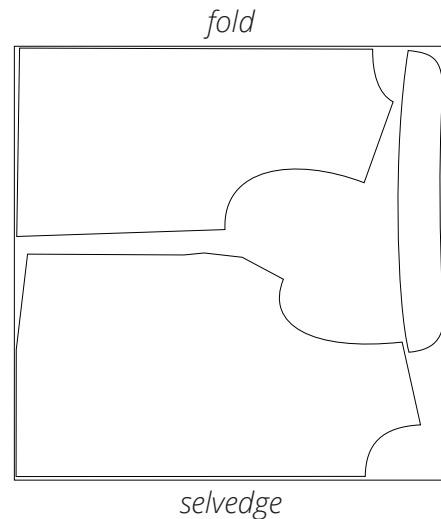
Main fabric (double scallop lace fabric), 130 cm (51") wide, with a directional print, cut on a single layer, for sizes 38-48 in all heights



Main fabric (double scallop lace fabric), 130 cm (51") wide, with a directional print, cut on a single layer, for sizes 50-52 in all heights

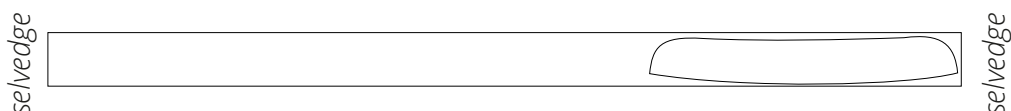


Main fabric, 140 cm (55") wide, with a directional print, cut on fold, for all sizes in all heights

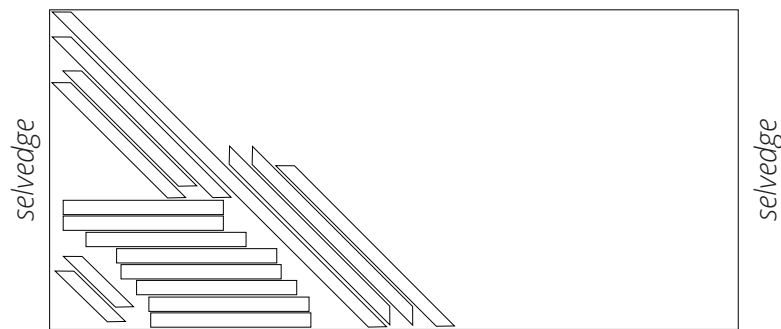


Attention! Cut only one collar piece.

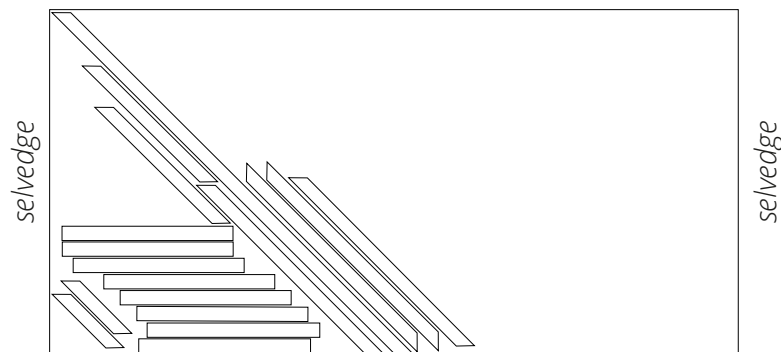
Additional fabric 1 (organza), 145 cm (57") wide, cut on a single layer, for all sizes in all heights



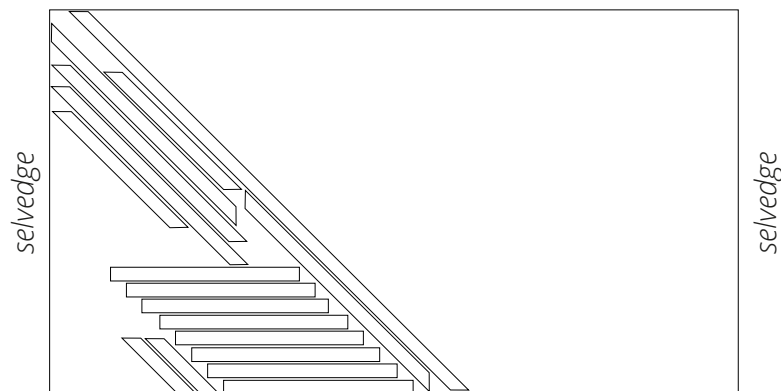
Additional fabric 2 (batiste), 150 cm (59") wide, with a directional print, cut on a single layer, for sizes 34–36 in all heights



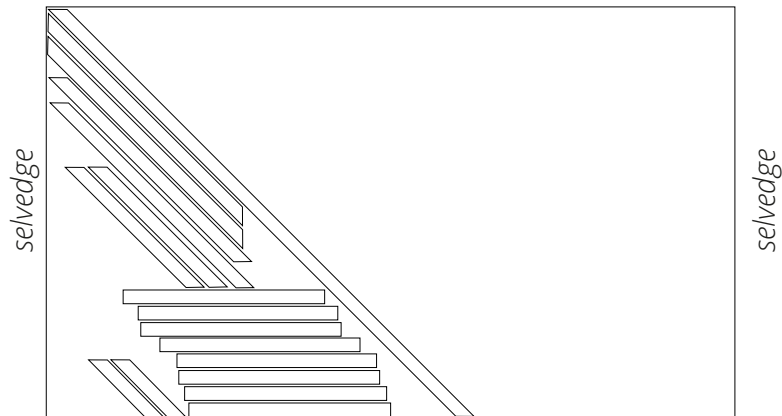
Additional fabric 2 (batiste), 150 cm (59") wide, with a directional print, cut on a single layer, for sizes 38–40 in all heights



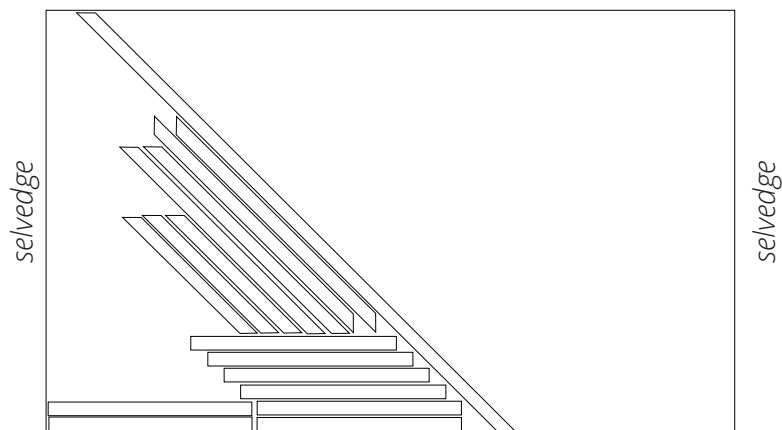
Additional fabric 2 (batiste), 150 cm (59") wide, with a directional print, cut on a single layer, for sizes 42–46 in all heights



Additional fabric 2 (batiste), 150 cm (59") wide, with a directional print, cut on a single layer, for sizes 48–50 in all heights



Additional fabric 2 (batiste), 150 cm (59") wide, with a directional print, cut on a single layer, for size 52 in all heights



READY? LET'S GET SEWING!



Machine-stitch, backstitching at the raw edge only. Leave long thread tails at the dart point.

Tie the thread tails into a knot and hide them inside the dart bulk using a needle.



Press the dart upwards.



Place the front and back pieces right sides together. Align the shoulder and side edges, match the notches, and pin. Machine-stitch, backstitching at the beginning and end of the seam.