

FROM THE FOUNDER OF THE #VIKISEWS BRAND



Back in 2016, when I was working on my first set of sewing instructions, I was trying to write them in such a way that even a complete beginner could easily understand and use them to create their very first garment. These instructions laid the foundation for the Vikisews brand, its vision and its mission. I wanted to create modern patterns with the utmost detailed and clear instructions.

Now, with each new collection we are constantly improving our instructions, amending them and adding more relevant details. By the time the final product reaches you, our drafters, correctors, and editors would have spent weeks perfecting every word and every photograph. If you compile a few of our instructions together, you will get a sewing manual that will assist you in sewing all kinds of garments at any difficulty level.

And I would be very happy if these instructions helped you to turn your hobby into a lifelong passion... Enjoy the process! Create your ultimate dream wardrobe! Wear your garments proudly for years to come!

If you have any questions, please contact us at info@vikisews.com - we are always there to help.



RUTA PATTERN DESCRIPTION

Ruta is a comfy, loose-fitting, straight-cut sweater with an extended shoulder line and long, set-in shirt sleeves. The boatneck is slightly V-shaped at the center front and finished with a neckband. The sweater is mid-hip length.



IMPORTANT!

The contents of this pattern are copyright protected and belong exclusively to Vikisews. You may use Vikisews patterns for personal use. It is prohibited to share Vikisews patterns and instructions with third parties, as well as to publish patterns and instructions online for public access. **Non-compliance with the mentioned rules is a violation of the US copyright law and may result in civil liability and criminal prosecution.**

You may use Vikisews patterns for commercial use, to sew custom-made garments and/or create fashion collections, on the condition that the patterns are solely used in a manufacturing setting and are not further shared with individuals.

TOTAL EASE ALLOWANCE

Size	Bust ease, cm	Waistline ease, cm	Hipline ease, cm	Upper arm ease, cm
XS (32–34) – S (36–38)	19	27	13	13
M (40–42)	15	25	13	10
L (44–46)	13	22	9	10
XL (48–50)	10	20	7	10

Size	Bust ease, in	Waistline ease, in	Hipline ease, in	Upper arm ease, in
XS (32–34) – S (36–38)	7 1/2	10 5/8	5 1/8	5 1/8
M (40–42)	5 7/8	9 7/8	5 1/8	3 7/8
L (44–46)	5 1/8	8 5/8	3 1/2	3 7/8
XL (48–50)	3 7/8	7 7/8	2 3/4	3 7/8

GARMENT LENGTH, SLEEVE LENGTH

Height, cm	Garment length at center back, cm	Sleeve length including shoulder width, cm
1 (154–160)	66	67 +/- 2
2 (162–168)	68	71 +/- 2
3 (170–176)	70	75 +/- 2
4 (178–184)	72	79 +/- 2

Height, ft	Garment length at center back, in	Sleeve length including shoulder width, in
1 (5'1"–5'3")	26	26 3/8 +/- 3/4
2 (5'4"–5'6")	26 3/4	28 +/- 3/4
3 (5'7"–5'9")	27 1/2	29 1/2 +/- 3/4
4 (5'10"–6'1")	28 3/8	31 1/8 +/- 3/4

SUGGESTED FABRIC

To sew this sweater, choose sweater knit fabrics with the following properties:

- medium weight, soft, opaque, with good drape, stretchy or low-stretch
- the fiber content can include natural fibers (wool, cotton, silk), blends (wool + polyester, cotton + elastane), artificial fibers (viscose), and synthetics (polyester, polyester + elastane)
- the following fabrics are recommended: sweater knits

The sweater in the photo is made of soft sweater knit. The fiber content is wool + polyester.

FABRIC AND NOTIONS REQUIREMENTS

1. Main fabric, 160 cm wide, for all sizes:

Height, cm	Meters
1 (154–160)	1.38
2 (162–168)	1.42
3 (170–176)	1.46
4 (178–184)	1.50

Main fabric, 63" wide, for all sizes:

Height, ft	Yards
1 (5'1"–5'3")	1 1/2
2 (5'4"–5'6")	1 1/2
3 (5'7"–5'9")	1 5/8
4 (5'10"–6'1")	1 5/8

IMPORTANT! When purchasing fabric, please account for shrinkage and buy 5% more than required.

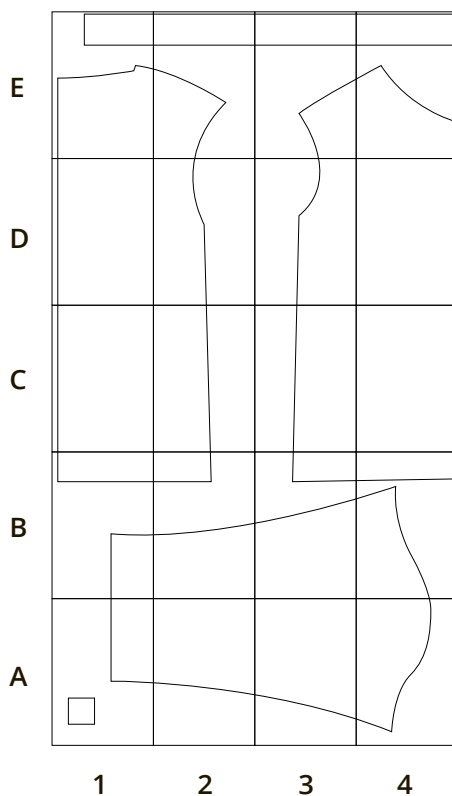
TOOLS AND EQUIPMENT

- overlocker for finishing raw edges and construction (this may be replaced with a zigzag stitch or a stretch overlock stitch on the sewing machine)
- sewing machine for joining small pieces
- coverstitch / coverlock machine for finishing the garment hem and sleeve hem edges (this may be replaced with a twin needle on the sewing machine)

We recommend using specialty ballpoint needles when sewing knits on a domestic sewing machine. When sewing, a ball-shaped needle point pushes the knit loops apart without piercing the threads.

PRINTED PATTERN LAYOUT

A4 FORMAT



PATTERN PIECES LIST

1. From main fabric:

- front – cut 1 on fold
- back – cut 1 on fold
- sleeve – cut 2
- neckband – cut 1

IMPORTANT! Don't forget to transfer all pattern markings and notches onto the fabric.

SEAM ALLOWANCES

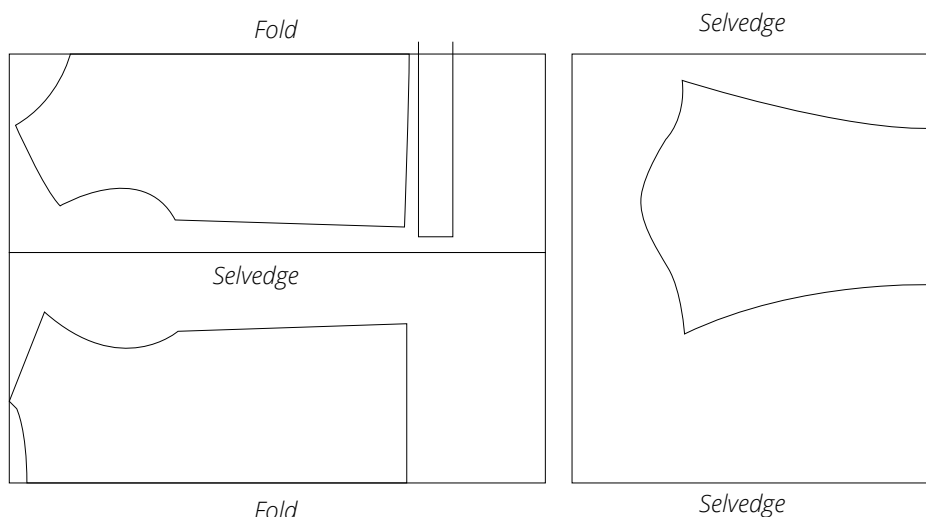
All pattern pieces include seam allowances as follows:

- garment hem allowance – 2 cm (3/4")
- sleeve hem allowance – 2 cm (3/4")
- all other edges – 1 cm (3/8")

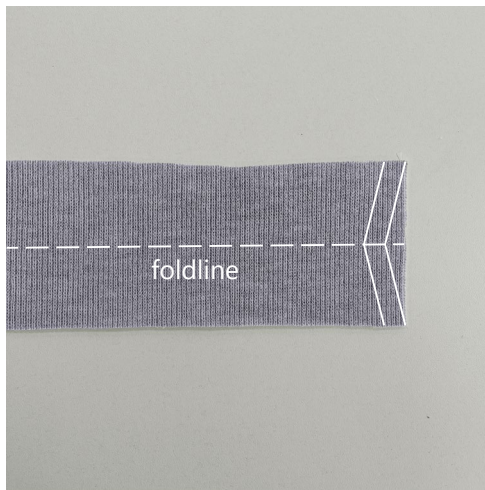
Take this into account when laying out pattern pieces on the fabric.

CUTTING LAYOUT

Main fabric, 160 cm (63") wide, cut the back and front pieces on a double lengthwise fold, cut the sleeve pieces on fold, for all sizes and heights, with a non-directional print/no nap



READY? LET'S GET SEWING!



Fold the neckband piece in half wrong side out, matching the short edges. On the foldline, make a marking 1 cm (3/8") away from the short edge. Mark two straight lines to connect the marking with the neckband corners. Machine-stitch the short edges 1 cm (3/8") away from the marked lines. For knits, we recommend setting a narrow zigzag stitch on your sewing machine, to avoid seam defects and provide the stretch needed. Set the stitch width to 0.5–0.6 mm and the stitch length to 1.5–1.7 mm. Backstitch at the beginning and end.

Important! We recommend testing your stitching settings on a scrap of fabric first.



Press the seam flat, press the seam allowances open.



Press the neckband piece, trim the corners that are peeking out.

Join the exterior and interior sides of the neckband piece by hand-basting them together along the center front seam, as shown in the photo.

This is to ensure that the V-corners on the exterior and interior of the neckband don't shift against each other while you're attaching the neckband to the neckline.



Place the neckband right sides together with the garment's neckline, match the notches. Baste in place.