

# FROM THE FOUNDER OF THE #VIKISEWS BRAND

---



Back in 2016, when I was working on my first set of sewing instructions, I was trying to write them in such a way that even a complete beginner could easily understand and use them to create their very first garment. These instructions laid the foundation for the Vikisews brand, its vision and its mission. I wanted to create modern patterns with the utmost detailed and clear instructions.

Now, with each new collection we are constantly improving our instructions, amending them and adding more relevant details. By the time the final product reaches you, our drafters, correctors, and editors would have spent weeks perfecting every word and every photograph. If you compile a few of our instructions together, you will get a sewing manual that will assist you in sewing all kinds of garments at any difficulty level.

And I would be very happy if these instructions helped you to turn your hobby into a lifelong passion... Enjoy the process! Create your ultimate dream wardrobe! Wear your garments proudly for years to come!

If you have any questions, please contact us at [info@vikisews.com](mailto:info@vikisews.com) — we are always there to help.



## SALONI PATTERN DESCRIPTION

---

Saloni is a pair of close-fitting capri pants. The front legs feature stitched creases. The back legs are shaped with waist darts. There are slits in the side seams. The top edge is finished with a facing. There is an invisible zipper in the left side seam. Saloni is knee-length.



## IMPORTANT!

---

The contents of this pattern are copyright protected and belong exclusively to Vikisews. You may use Vikisews patterns for personal use. It is prohibited to share Vikisews patterns and instructions with third parties, as well as to publish patterns and instructions online for public access. **Non-compliance with the mentioned rules is a violation of the US copyright law and may result in civil liability and criminal prosecution.**

You may use Vikisews patterns for commercial use, to sew custom-made garments and/or create fashion collections, on the condition that the patterns are solely used in a manufacturing setting and are not further shared with individuals.

# TOTAL EASE ALLOWANCE

	Waistline ease	Hipline ease
cm	-1.4–4	-1.8 to -3.5
inches	-1/2–1 5/8	-3/4 to -1 3/8

# GARMENT LENGTH, HEM WIDTH

Height, cm	Side seam length, cm	Finished hem width, cm
1 (154–160)	63.1–65.4	17–25
2 (162–168)	65.5–67.8	17–25
3 (170–176)	63.1–70.2	17–25
4 (178–184)	70.5–72.6	17–25

Height, ft	Side seam length, in	Finished hem width, in
1 (5'1"–5'3")	24 7/8–25 3/4	18 5/8–27 3/8
2 (5'4"–5'6")	25 3/4–26 3/4	18 5/8–27 3/8
3 (5'7"–5'9")	24 7/8–27 5/8	18 5/8–27 3/8
4 (5'10"–6'1")	27 3/4–28 5/8	18 5/8–27 3/8

# SUGGESTED FABRIC

To sew these capri pants, choose medium-weight, pliable, soft, low-stretch, opaque suiting fabrics. The fiber content can include natural fibers, artificial fibers, blends, or synthetics.

The following fabrics are recommended: denim, jersey fabrics, suiting fabrics with elastane content.

**Attention!** We do not recommend heavyweight non-stretch fabrics (crisp suiting) or lightweight sheer fabrics (chiffon, organza, stretch lace).

The capri pants in the photo are made of suiting fabric. The fabric is medium weight, pliable, soft, and low-stretch. The fiber content is 63% polyester, 34% viscose, and 3% elastane. The fabric weight is 250 g/m<sup>2</sup>.

# FABRIC AND NOTIONS REQUIREMENTS

1. Main fabric, 140 cm wide, with a directional print/nap, in meters:

Height, cm	Size						
	34-36	38	40	42	44	46	48-52
1 (154-160)	0.75	0.8	0.8	0.85	0.85	1	1.15
2 (162-168)	0.75	0.8	0.85	0.9	0.9	1.05	1.2
3 (170-176)	0.8	0.85	0.85	0.9	0.9	1.1	1.25
4 (178-184)	0.8	0.85	0.9	0.95	0.95	1.15	1.25

Main fabric, 55" wide, with a directional print/nap, in yards:

Height, ft	Size				
	34-38	40	42-44	46	48-52
1 (5'1"-5'3")	7/8	7/8	7/8	1 1/8	1 1/4
2 (5'4"-5'6")	7/8	7/8	1	1 1/8	1 1/4
3 (5'7"-5'9")	7/8	7/8	1	1 1/4	1 3/8
4 (5'10"-6'1")	7/8	1	1	1 1/4	1 3/8

**IMPORTANT!** When purchasing fabric, please account for shrinkage and buy 5% more than required.

2. Lightweight interfacing, knit or woven, 140 cm (55") wide, for all sizes in all heights — 10 cm (4")
3. Stitched bias-cut fusible stay tape with stitch reinforcement, 1.5 cm (5/8") wide — 1.5 m (1 5/8 yd)
4. Stitched straight-grain fusible stay tape for the slit, 1 cm (3/8") wide — 30 cm (11 3/4")
5. One invisible zipper, 30 cm (11 3/4") long, for all sizes in all heights
6. One hook-and-eye closure
7. Matching thread — 5 spools (1 spool for the sewing machine + 4 spools for the overlocker)

# TOOLS AND EQUIPMENT

---

- sewing machine for construction
- overlocker for finishing raw edges. This may be replaced with a stretch overlock stitch or a zigzag stitch on the sewing machine (overlock or zigzag stitch width 2–3 mm, stitch length 2.5 mm)
- invisible zipper foot for the sewing machine
- one-sided foot for the sewing machine

## PATTERN PIECES LIST

---

### 1. From main fabric:

- front leg — cut 2
- back leg — cut 2
- front leg facing — cut 1 on fold
- back leg facing — cut 1 on fold

***IMPORTANT!** Don't forget to transfer all pattern markings and notches onto the fabric.*

### 2. From interfacing:

- front leg facing — cut 1 on fold
- back leg facing — cut 1 on fold

## SEAM ALLOWANCES

---

All pattern pieces include seam allowances as follows:

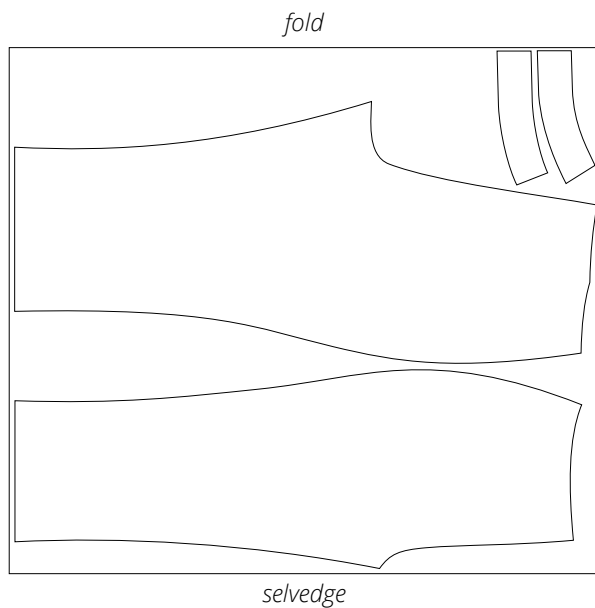
- garment hem allowance — 5.5 cm (2 1/8")
- all other edges — 1 cm (3/8")

Take this into account when laying out the pattern pieces on the fabric.

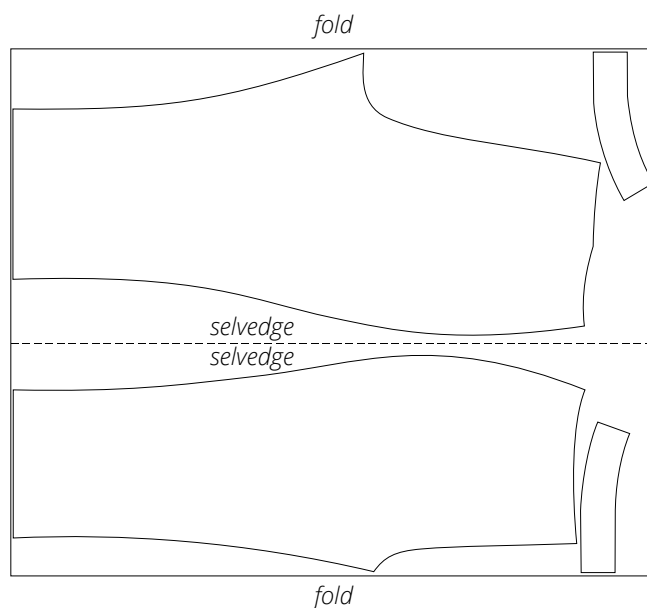
# CUTTING LAYOUT

---

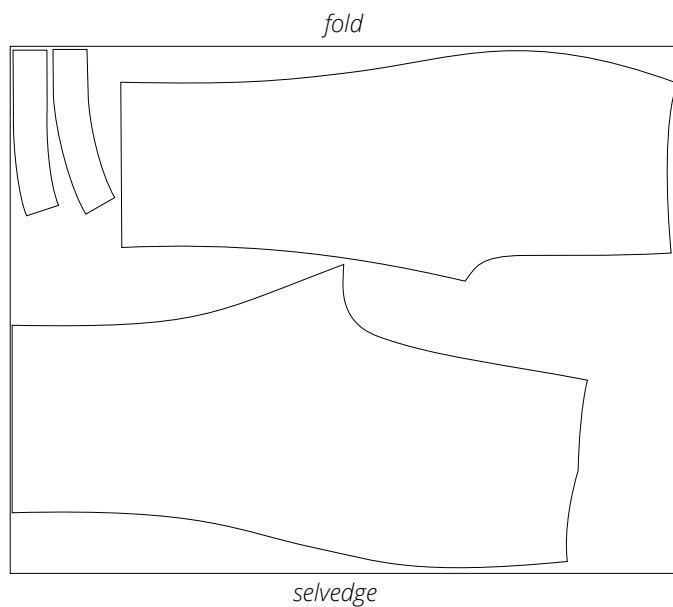
Main fabric, 140 cm (55") wide, with a directional print/nap, cut on fold, for sizes 34–36 in all heights



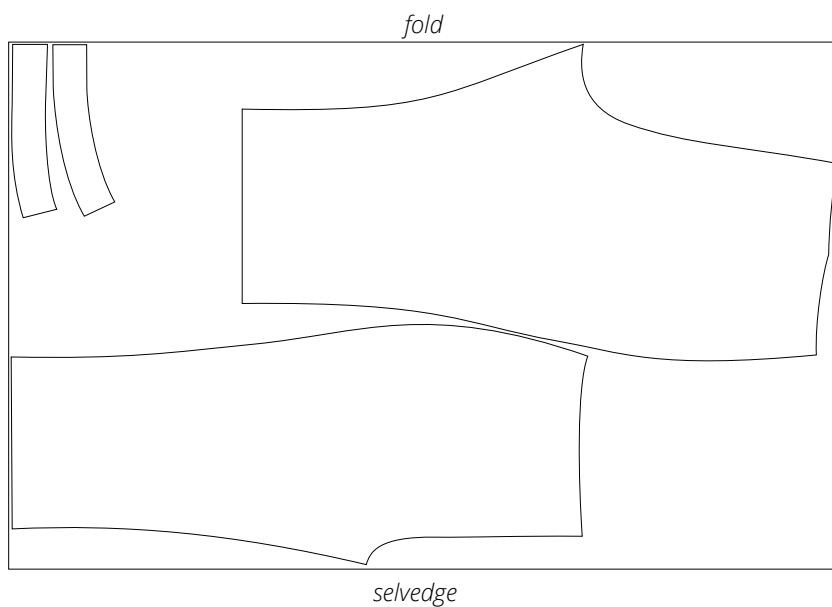
Main fabric, 140 cm (55") wide, with a directional print/nap, cut with two folds, for sizes 38–40 in all heights



Main fabric, 140 cm (55") wide, with a directional print/nap,  
cut on fold, for sizes 42-44 in all heights

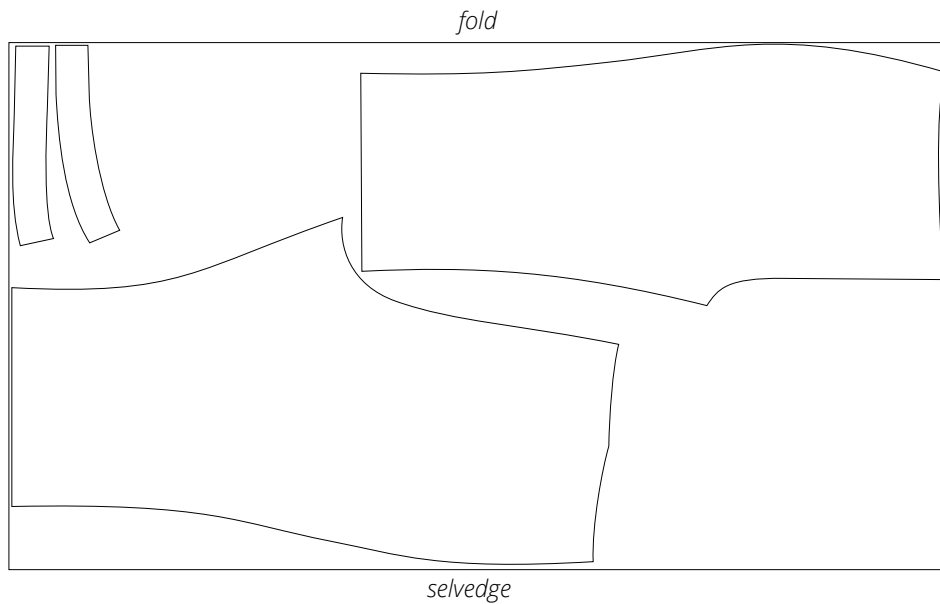


Main fabric, 140 cm (55") wide, with a directional print/nap,  
cut on fold, for size 46 in all heights

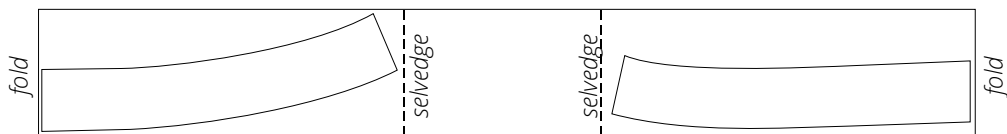




Main fabric, 140 cm (55") wide, with a directional print/nap,  
cut on fold, for sizes 48-52 in all heights



Interfacing, 140 cm (55") wide, cut with two folds,  
for all sizes in all heights



**READY? LET'S GET SEWING!**



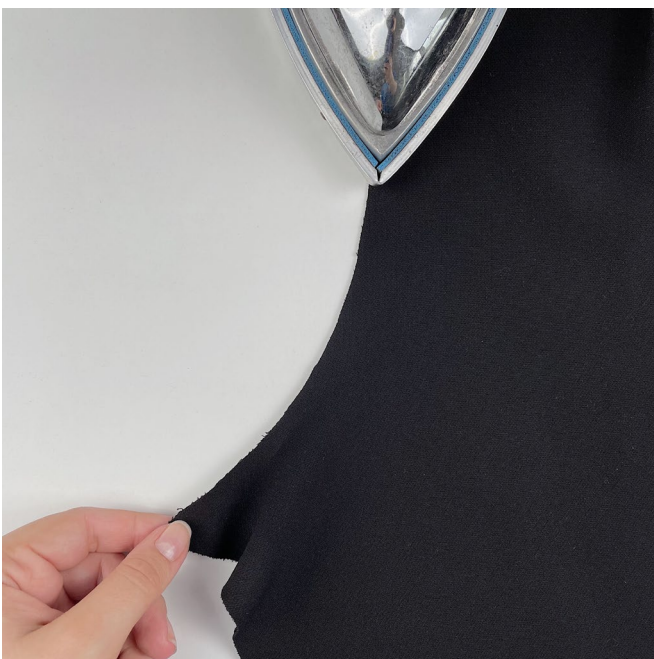
Match up and pin the dart legs on the wrong side of the back leg piece.



Machine-stitch the dart, backstitching at the raw edge only. Leave long thread tails at the dart point.

Tie the thread tails into a knot and hide them inside the dart bulk using a needle.

Press the dart flat.



Shape the back leg pieces by steam-pressing them.

To do this, place the back leg pieces right sides together, aligning the crotch and inseam edges. Stretch the crotch edge from the top corner down to the inseam edge.