

FROM THE FOUNDER OF THE #VIKISEWS BRAND



Back in 2016, when I was working on my first set of sewing instructions, I was trying to write them in such a way that even a complete beginner could easily understand and use them to create their very first garment. These instructions laid the foundation for the Vikisews brand, its vision and its mission. I wanted to create modern patterns with the utmost detailed and clear instructions.

Now, with each new collection we are constantly improving our instructions, amending them and adding more relevant details. By the time the final product reaches you, our drafters, correctors, and editors would have spent weeks perfecting every word and every photograph. If you compile a few of our instructions together, you will get a sewing manual that will assist you in sewing all kinds of garments at any difficulty level.

And I would be very happy if these instructions helped you to turn your hobby into a lifelong passion... Enjoy the process! Create your ultimate dream wardrobe! Wear your garments proudly for years to come!

If you have any questions, please contact us at info@vikisews.com — we are always there to help.



FLAMIA PATTERN DESCRIPTION

Flamia is a semi-fitted dress with an accentuated waist and a waist seam. It has a wrap-style closure, secured on the left side with a sew-on snap fastener, and on the right side with an inner button loop and button.

The front bodice is gathered along the waistline at the sides. The back bodice is gathered along the entire waistline. The skirt of the dress is designed with a curved hemline and features diagonal pleats on the right front and waist darts on the left front and back.

The deep V-neckline is framed with an applied shawl collar. The shoulder line is slightly extended.

The long two-piece set-in sleeves have a loose fit. Flamia is knee-length.



IMPORTANT!

The contents of this pattern are copyright protected and belong exclusively to Vikisews. You may use Vikisews patterns for personal use. It is prohibited to share Vikisews patterns and instructions with third parties, as well as to publish patterns and instructions online for public access. **Non-compliance with the mentioned rules is a violation of the US copyright law and may result in civil liability and criminal prosecution.**

You may use Vikisews patterns for commercial use, to sew custom-made garments and/or create fashion collections, on the condition that the patterns are solely used in a manufacturing setting and are not further shared with individuals.

TOTAL EASE ALLOWANCE

	Bust ease	Waistline ease	Hipline ease (estimated)	Upper arm ease
cm	18.5–19	1.6–1.7	9.9–11.4	5.8–6.8
inches	7 1/4–7 1/2	5/8	3 7/8–4 1/2	2 1/4–2 5/8

GARMENT LENGTH, SLEEVE LENGTH

Height, cm	Back length from waist down, cm	Sleeve length, cm
1 (154–160)	61	61.7–63.1
2 (162–168)	64	63.7–65.1
3 (170–176)	67	65.7–67.1
4 (178–184)	70	67.7–69.1

Height, ft	Back length from waist down, in	Sleeve length, in
1 (5'1"–5'3")	24	24 1/4–24 7/8
2 (5'4"–5'6")	25 1/4	25 1/8–25 5/8
3 (5'7"–5'9")	26 3/8	25 7/8–26 3/8
4 (5'10"–6'1")	27 1/2	26 5/8–27 1/4

SUGGESTED FABRIC

To sew this dress, choose suiting and dress-weight fabrics with the following properties: medium weight, pliable, soft, non-stretch or low-stretch, opaque. The fiber content can include natural fibers, artificial fibers, blends, or synthetics.

The following fabrics are recommended: dress-weight suiting, satin, velvet, dress-weight viscose, cupro, modal, silk, artificial silk.

Attention! We do not recommend stretchy knit fabrics and lightweight sheer fabrics (chiffon, organza, stretch lace).

The dress in the photo is made of natural silk. The fabric is medium weight, pliable, soft, with a little stretch. The fiber content is 100% silk. The fabric weight is 200 g/m².

FABRIC AND NOTIONS REQUIREMENTS

1. Main fabric, 140 cm wide, with a directional print/nap, in meters:

Height, cm	Size							
	34	36-38	40	42	44-46	48	50	52
1 (154-160)	2	2.2	2.25	2.35	2.45	2.55	2.6	2.7
2 (162-168)	2.1	2.25	2.3	2.4	2.5	2.7	2.75	2.75
3 (170-176)	2.1	2.3	2.4	2.45	2.55	2.75	2.8	2.8
4 (178-184)	2.2	2.35	2.45	2.55	2.6	2.8	2.9	2.9

Main fabric, 55" wide, cut in one direction, in yards:

Height, ft	Size							
	34	36-38	40	42	44-46	48	50	52
1 (5'1"-5'3")	2 1/8	2 3/8	2 1/2	2 5/8	2 5/8	2 3/4	2 7/8	3
2 (5'4"-5'6")	2 1/4	2 1/2	2 1/2	2 5/8	2 3/4	3	3	3
3 (5'7"-5'9")	2 1/4	2 1/2	2 5/8	2 5/8	2 3/4	3	3	3
4 (5'10"-6'1")	2 3/8	2 5/8	2 5/8	2 3/4	2 7/8	3	3 1/8	3 1/8

IMPORTANT! When purchasing fabric, please account for shrinkage and buy 5% more than required.

2. Lightweight knit or woven interfacing, 140 cm (55") wide, for all sizes in all heights — 40 cm (15 3/4").

3. One plastic set-in snap, 0.7-1 cm (1/4-3/8") in diameter.

4. One button, 0.7-1 cm (1/4-3/8") in diameter.

5. One pair of shoulder pads, 1 cm (3/8") tall.

6. Matching thread — 5 spools (1 spool for the sewing machine + 4 spools for the overlocker).

TOOLS AND EQUIPMENT

- sewing machine for construction
- overlocker for finishing raw edges. This may be replaced with a stretch overlock stitch or a zigzag stitch on the sewing machine (overlock or zigzag stitch width 2–3 mm, stitch length 2.5 mm)
- loop turner

PATTERN PIECES LIST

1. From main fabric:

- front bodice — cut 2
- back bodice — cut 1 on fold
- right front skirt — cut 1
- left front skirt — cut 1
- back skirt — cut 1 on fold
- top sleeve – cut 2
- bottom sleeve — cut 2
- undercollar — cut 1 on fold
- upper collar — cut 1 on fold
- back skirt binding — cut 1
- right front skirt binding — cut 1
- left front skirt binding — cut 1
- button loop — cut 1

***IMPORTANT!** Don't forget to transfer all pattern markings and notches onto the fabric.*

***IMPORTANT!** The pattern pieces that have the "face" inscription should be placed with the blank side onto the right side of fabric when cutting.*

2. From interfacing:

- undercollar — cut 1 on fold
- upper collar — cut 1 on fold

The interfacing strips should be cut on the straight grain (parallel to the selvedge).

SEAM ALLOWANCES

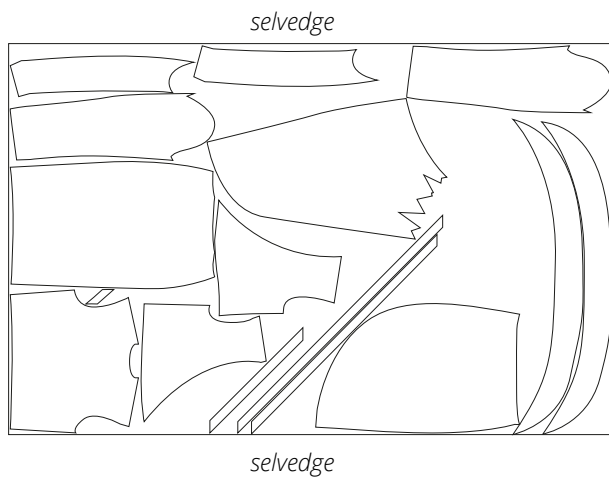
All pattern pieces include seam allowances as follows:

- sleeve hem allowance — 4 cm (1 5/8")
- all other edges — 1 cm (3/8")

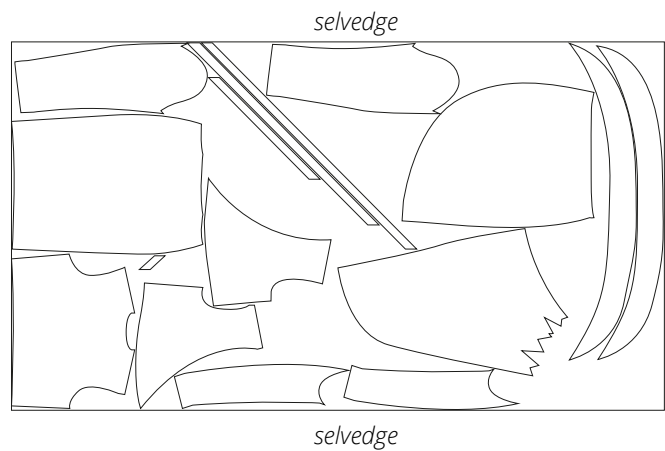
Take this into account when laying out pattern pieces on the fabric.

CUTTING LAYOUT

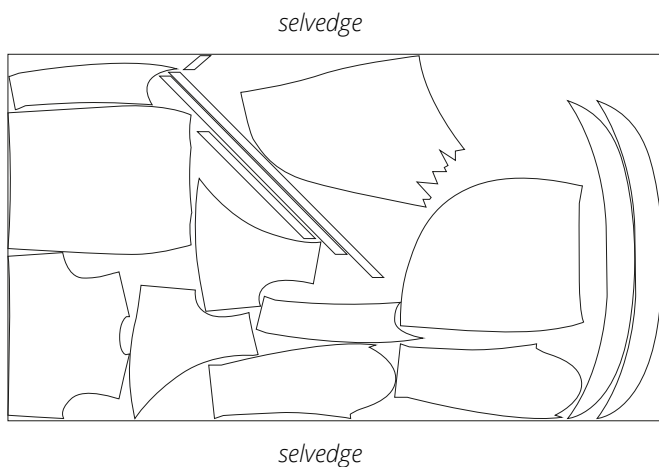
Main fabric, 140 cm (55") wide, with a directional print/nap, cut on a single layer, for size 34 in all heights



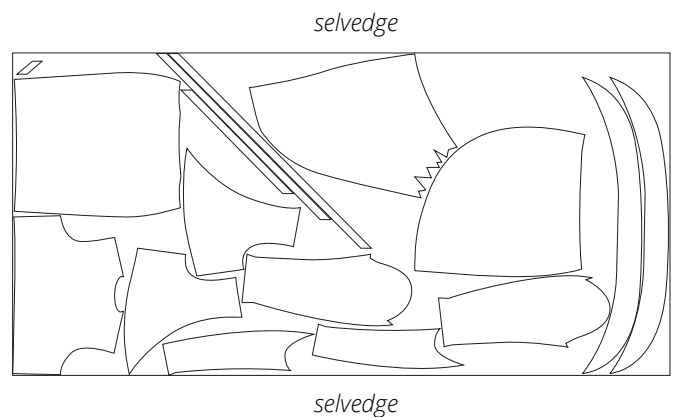
Main fabric, 140 cm (55") wide, with a directional print/nap, cut on a single layer, for sizes 36-42 in all heights



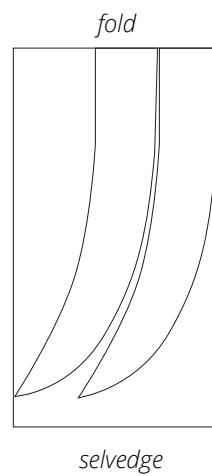
Main fabric, 140 cm (55") wide, with a directional print/nap, cut on a single layer, for sizes 44-46 in all heights



Main fabric, 140 cm (55") wide, with a directional print/nap, cut on a single layer, for sizes 48-52 in all heights



Interfacing, 140 cm (55") wide, cut on fold
and in one direction, for all sizes in all heights



READY? LET'S GET SEWING!



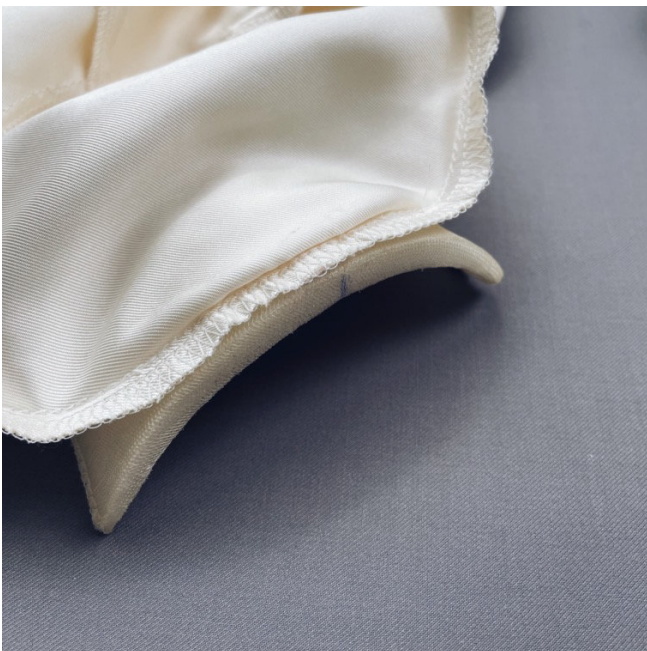
Finish the sleeve-to-armscye seam allowances on the overlocker, with the garment armscye facing up.

Remove the basting stitches.

Press the seam flat.



Tie the overlocker thread ends into knots and hide them between the fabric layers using a latch hook or a large-eye needle.



Working on the wrong side of the garment, secure the shoulder pad to the shoulder seam allowances with hand stitches. Continue the stitching line along the sleeve cap by 5 cm (2") on each side of the shoulder seam.