

# FROM THE FOUNDER OF THE #VIKISEWS BRAND

---



Back in 2016, when I was working on my first set of sewing instructions, I was trying to write them in such a way that even a complete beginner could easily understand and use them to create their very first garment. These instructions laid the foundation for the Vikisews brand, its vision and its mission. I wanted to create modern patterns with the utmost detailed and clear instructions.

Now, with each new collection we are constantly improving our instructions, amending them and adding more relevant details. By the time the final product reaches you, our drafters, correctors, and editors would have spent weeks perfecting every word and every photograph. If you compile a few of our instructions together, you will get a sewing manual that will assist you in sewing all kinds of garments at any difficulty level.

And I would be very happy if these instructions helped you to turn your hobby into a lifelong passion... Enjoy the process! Create your ultimate dream wardrobe! Wear your garments proudly for years to come!

If you have any questions, please contact us at [info@vikisews.com](mailto:info@vikisews.com) — we are always there to help.



## EIZA PATTERN DESCRIPTION

---

Eiza is a semi-fitted shearling jacket with a straight silhouette and extended shoulders. The front features yokes, princess seams, and welt pockets on both sides. The jacket closes with an off-center zipper in the left front princess seam. The back features a yoke and princess seams. The set-in sleeves are made up of two pieces and feature turn-back cuffs. The jacket has a turn-down collar and a waistband that closes with snaps. Eiza features decorative topstitching and is below-hip length.



## IMPORTANT!

---

The contents of this pattern are copyright protected and belong exclusively to Vikisews. You may use Vikisews patterns for personal use. It is prohibited to share Vikisews patterns and instructions with third parties, as well as to publish patterns and instructions online for public access. **Non-compliance with the mentioned rules is a violation of the US copyright law and may result in civil liability and criminal prosecution.**

You may use Vikisews patterns for commercial use, to sew custom-made garments and/or create fashion collections, on the condition that the patterns are solely used in a manufacturing setting and are not further shared with individuals.

# TOTAL EASE ALLOWANCE

	Bust ease	Waistline ease	Hipline ease	Upper arm ease
cm	36.9	55.2–55.8	24.6–25.8	12.9–13.4
inches	14 1/2	21 3/4–22	9 5/8–10 1/8	5 1/8–5 1/4

# GARMENT LENGTH, SLEEVE LENGTH

Height, cm	Back length including waistband, cm	Sleeve length including shoulder width and cuff (estimated), cm
1 (154–160)	67.5–70.2	79.1–82.3
2 (162–168)	70.5–73.2	81.1–84.3
3 (170–176)	73.5–76.2	83.2–86.3
4 (178–184)	76.5–79.2	85.1–88.3
Height, ft	Back length including waistband, in	Sleeve length including shoulder width and cuff (estimated), in
1 (5'1"–5'3")	26 5/8–27 5/8	31 1/8–32 3/8
2 (5'4"–5'6")	27 3/4–28 7/8	31 7/8–33 1/4
3 (5'7"–5'9")	28 7/8–30	32 3/4–34
4 (5'10"–6'1")	30 1/8–31 1/8	33 1/2–34 3/4

# SUGGESTED FABRIC

To sew this shearling jacket, choose fur-backed faux leather with the following properties:

- malleable, soft, low-stretch or non-stretch
- the fiber content of the faux fur can include natural fibers (wool), blends (wool + polyester), and synthetics (polyester)

**IMPORTANT!** The fur pile must not be higher than 1 cm (3/8").

**Attention!** Before sewing the garment, we suggest purchasing a small piece of fabric (10 cm [4"]) and testing whether your sewing machine is capable of sewing through two layers of the fabric.

For the binding pieces, we recommend using faux leather or faux suede that matches the outer layer of the garment. The fabric weight is 200 g/m<sup>2</sup>.

For the inner pocket lining, we recommend using pocketing fabric that includes natural (cotton) or synthetic (polyester) fibers. The fabric weight is 100 g/m<sup>2</sup>.

For the outer pocket lining, we recommend using faux leather or faux suede that matches either the outer or the inner layer of the garment. The fabric weight is 200 g/m<sup>2</sup>.

The shearling jacket in the photo is made of fur-backed faux leather. The pile height is 1 cm (3/8"). The fabric is malleable, soft, and non-stretch. The fiber content is polyurethane (50%) and polyester (50%). The fabric weight is 870 g/m<sup>2</sup>.

## FABRIC AND NOTIONS REQUIREMENTS

1. Main fabric, 140 cm wide, 870 g/m<sup>2</sup>, with a directional print/nap, in meters:

Height, cm	Size			
	34-38	40-44	46-48	50-52
1 (154-160)	1.75	1.9	2.05	2.1
2 (162-168)	1.8	2	2.1	2.15
3 (170-176)	1.85	2.05	2.2	2.2
4 (178-184)	1.9	2.1	2.25	2.3

Main fabric, 55" wide, 870 g/m<sup>2</sup>, with a directional print/nap, in yards:

Height, ft	Size			
	34-38	40-44	46-48	50-52
1 (5'1"-5'3")	1 7/8	2 1/8	2 1/4	2 1/4
2 (5'4"-5'6")	2	2 1/8	2 1/4	2 3/8
3 (5'7"-5'9")	2	2 1/4	2 3/8	2 3/8
4 (5'10"-6'1")	2 1/8	2 1/4	2 1/2	2 1/2

Main fabric, 160 cm wide, 870 g/m<sup>2</sup>, with a directional print/nap, in meters:

Height, cm	Size		
	34-38	40-44	46-52
1 (154-160)	1.55	1.7	1.85
2 (162-168)	1.6	1.75	1.9
3 (170-176)	1.7	1.8	1.95
4 (178-184)	1.75	1.9	2

Main fabric, 63" wide, 870 g/m<sup>2</sup>, with a directional print/nap, in yards:

Height, ft	Size		
	34-38	40-44	46-52
1 (5'1"-5'3")	1 3/4	1 7/8	2
2 (5'4"-5'6")	1 3/4	1 7/8	2 1/8
3 (5'7"-5'9")	1 7/8	2	2 1/8
4 (5'10"-6'1")	1 7/8	2 1/8	2 1/8

**IMPORTANT!** When purchasing fabric, please account for shrinkage and buy 5% more than required.

2. Additional fabric for the outer pocket lining and bindings, 140 cm wide, 200 g/m<sup>2</sup>, with a directional print/nap, in meters:

Height, cm	Meters
1 (154–160)	0.65
2 (162–168)	0.7
3 (170–176)	0.7
4 (178–184)	0.75

Additional fabric for the outer pocket lining and bindings, 55" wide, 200 g/m<sup>2</sup>, with a directional print/nap, in yards:

Height, ft	Yards
1 (5'1"–5'3")	3/4
2 (5'4"–5'6")	3/4
3 (5'7"–5'9")	3/4
4 (5'10"–6'1")	7/8

3. Pocketing fabric for the inner pocket lining, 140 cm (55") wide, 100 g/m<sup>2</sup>, for all sizes in all heights — 0.3 m (3/8 yd)

4. One separating metal zipper No. 8, in centimeters:

Height, cm	Size			
	34	36–40	42–44	46–52
1 (154–160)	55	60	60	60
2 (162–168)	60	60	60	65
3 (170–176)	65	65	65	65
4 (178–184)	65	65	70	70

One separating metal zipper No. 8, in inches:

Height, ft	Size			
	34	36–40	42–44	46–52
1 (5'1"–5'3")	21 5/8	23 5/8	23 5/8	23 5/8
2 (5'4"–5'6")	23 5/8	23 5/8	23 5/8	25 5/8
3 (5'7"–5'9")	25 5/8	25 5/8	25 5/8	25 5/8
4 (5'10"–6'1")	25 5/8	25 5/8	27 1/2	27 1/2

5. Two top zipper stoppers for adjusting the zipper length

6. Double-sided adhesive tape, 5 mm (just under 1/4") wide — 1 m (1 1/8 yd)

7. Paper-backed fusible web tape, 1 cm (3/8") wide — 2.2 m (2 3/8 yd)

8. Two set-in snaps, 1 cm (3/8") in diameter

9. Matching thread for the outer layer — 1 spool

10. Matching thread for the lining fabric — 1 spool

11. Matching topstitching thread for the outer layer (for example, Madeira No. 35) — 1 spool

# TOOLS AND EQUIPMENT

---

- sewing machine for construction
- one-sided zipper foot for the sewing machine
- teflon or walking foot for the sewing machine
- press tool for installing snaps

## PATTERN PIECES LIST

---

### 1. From main fabric:

- back — cut 1
- side back — cut 2
- back yoke — cut 1
- center front — cut 2
- side front — cut 2
- front yoke — cut 2
- collar — cut 1
- top sleeve — cut 2
- bottom sleeve — cut 2
- cuff — cut 2
- waistband — cut 1
- welt — cut 2
- pocket facing — cut 2

### 2. From additional fabric:

- pocket lining (additional fabric) — cut 4
- center front binding — cut 2
- collar binding — cut 1

### 3. From pocketing fabric:

- bottom pocket lining — cut 2
- top pocket lining — cut 2

**IMPORTANT!** Don't forget to transfer all pattern markings and notches onto the fabric.

## SEAM ALLOWANCES

---

All pattern pieces include seam allowances as follows:

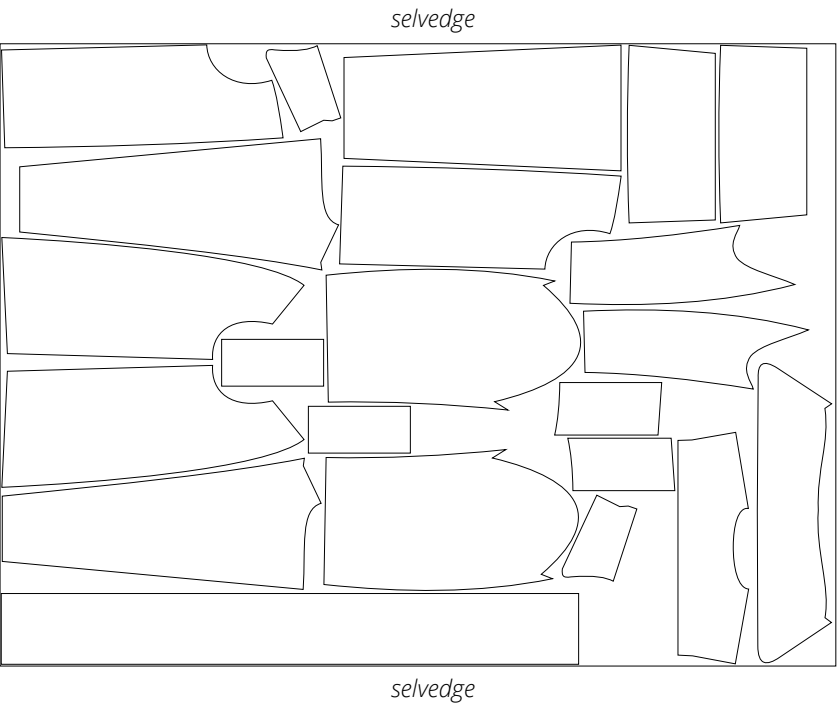
- edges of the top and bottom pocket lining pieces — 1 cm (3/8")
- curved edge of the pocket lining (additional fabric) — 1 cm (3/8")
- straight edge of the pocket lining (additional fabric) — 3 cm (1 1/8")
- upper edge of the pocket facing — 2 cm (3/4")
- bottom edge of the pocket facing — 1 cm (3/8")
- all other edges — 1.5 cm (5/8")

Take this into account when laying out pattern pieces on the fabric.

# CUTTING LAYOUT

---

Main fabric, 140 cm (55") wide, with a directional print/nap, cut on a single layer, for sizes 34-38 in all heights



Main fabric, 140 cm (55") wide, with a directional print/nap, cut on a single layer, for sizes 40-44 in all heights







Trim the pile off the bottom seam allowance on the back yoke piece.



Place the back and back yoke pieces right sides together. Align the edges, match the notches, and pin. Machine-stitch with the back yoke facing up, backstitching at the beginning and end.



Trim the seam allowance of the back yoke piece down to 3 mm (1/8").