

# FROM THE FOUNDER OF THE #VIKISEWS BRAND

---

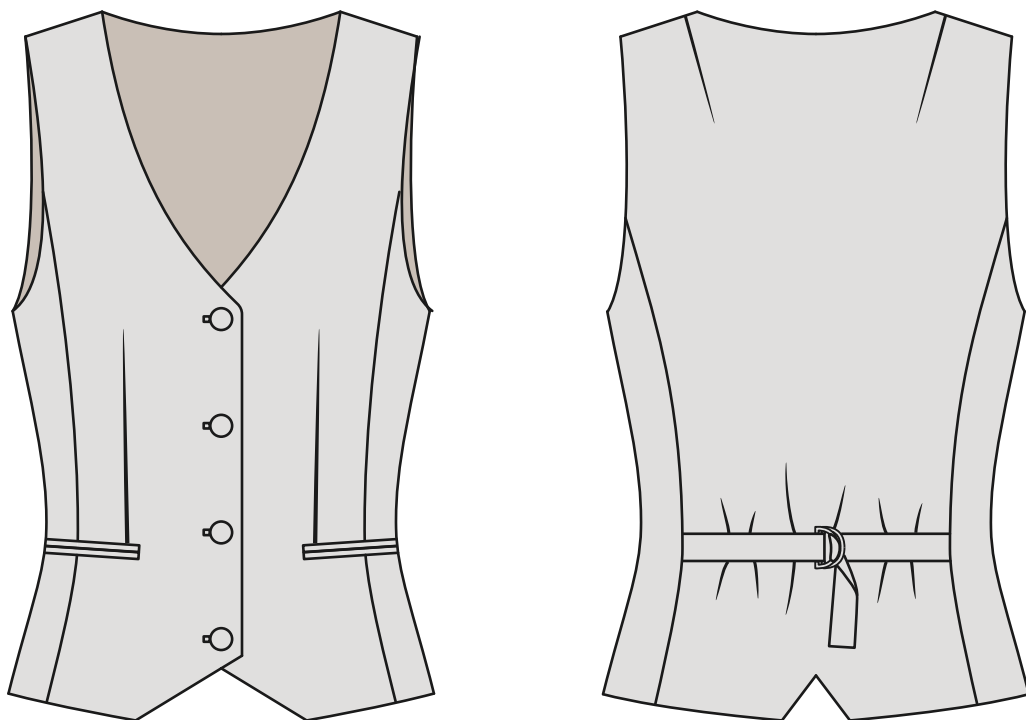


Back in 2016, when I was working on my first set of sewing instructions, I was trying to write them in such a way that even a complete beginner could easily understand and use them to create their very first garment. These instructions laid the foundation for the Vikisews brand, its vision and its mission. I wanted to create modern patterns with the utmost detailed and clear instructions.

Now, with each new collection we are constantly improving our instructions, amending them and adding more relevant details. By the time the final product reaches you, our drafters, correctors, and editors would have spent weeks perfecting every word and every photograph. If you compile a few of our instructions together, you will get a sewing manual that will assist you in sewing all kinds of garments at any difficulty level.

And I would be very happy if these instructions helped you to turn your hobby into a lifelong passion... Enjoy the process! Create your ultimate dream wardrobe! Wear your garments proudly for years to come!

If you have any questions, please contact us at [info@vikisews.com](mailto:info@vikisews.com) - we are always there to help.



## LILIANA PATTERN DESCRIPTION

---

Liliana is a semi-fitted vest. Its bust darts have been transferred to the princess seams and the double welt pocket line. The back features shoulder darts and princess seams, as well as tabs that fasten with a D-ring to further cinch in the waist. The back hem features an inverted V-shaped detail. The vest has a center fastening with four buttons and buttonholes, and is fully lined. Liliana is high-hip length.

Important! Liliana has been designed to be worn as a stand-alone piece, without an underlayer, and as such the armhole level is relatively high. If you're planning on wearing this vest over a sweater or a blouse, we recommend deepening the armhole for increased comfort.



## IMPORTANT!

---

The contents of this pattern are copyright protected and belong exclusively to Vikisews. You may use Vikisews patterns for personal use. It is prohibited to share Vikisews patterns and instructions with third parties, as well as to publish patterns and instructions online for public access. **Non-compliance with the mentioned rules is a violation of the US copyright law and may result in civil liability and criminal prosecution.**

You may use Vikisews patterns for commercial use, to sew custom-made garments and/or create fashion collections, on the condition that the patterns are solely used in a manufacturing setting and are not further shared with individuals.

## TOTAL EASE ALLOWANCE

	Bust ease	Waistline ease
cm	7.2–10.2	8.4–10
inches	2 7/8–4	3 1/4–3 7/8

## GARMENT LENGTH

Height, cm	Garment length, cm	Height, ft	Garment length, in
1 (154–160)		1 (5'1"–5'3")	19 1/8
2 (162–168)	48.5–48.6	2 (5'4"–5'6")	20 3/8
3 (170–176)	51.6	3 (5'7"–5'9")	21 1/2
4 (178–184)	54.5–54.6	4 (5'10"–6'1")	22 5/8
	57.6		

## SUGGESTED FABRIC

To sew this vest, choose woven fabrics with the following properties:

- Medium weight, soft, structured, non-stretch or with very little stretch
- The fiber content can include natural fibers (wool, silk, cotton, linen), artificial (viscose), blends (wool + silk, wool + polyester, cotton + viscose, etc.), and synthetic (polyester, polyester + elastane)
- The following fabrics are recommended: wool suiting, cotton, linen, crepe, gabardine, denim

For the lining, we recommend artificial fibers (viscose), blends (viscose + elastane, viscose + polyester), or synthetic fibers (polyester, polyester + elastane).

The vest in the photo is made of 100% linen. This material is soft and non-stretch. The lining is 100% viscose.

# FABRIC AND NOTIONS REQUIREMENTS

1. Main fabric, 140cm wide, in meters:

Height, cm	Size		
	34-36	38-42	44-46
1 (154-160)	0.65	0.75	1
2 (162-168)	0.7	0.75	1.05
3 (170-176)	0.75	0.8	1.1
4 (178-184)	0.75	0.85	1.15

Main fabric, 55" wide, in yards:

Height, ft	Size		
	34-36	38-42	44-46
1 (5'1"-5'3")	3/4	7/8	1 1/8
2 (5'4"-5'6")	3/4	7/8	1 1/8
3 (5'7"-5'9")	7/8	7/8	1 1/4
4 (5'10"-6'1")	7/8	7/8	1 1/4

2. Lining fabric, 140cm wide, for all sizes

Height, cm	Metres
1 (154-160)	0.55
2 (162-168)	0.55
3 (170-176)	0.6
4 (178-184)	0.65

Lining fabric, 55" wide, for all sizes

Height, ft	Yards
1 (5'1"-5'3")	5/8
2 (5'4"-5'6")	5/8
3 (5'7"-5'9")	5/8
4 (5'10"-6'1")	3/4

**IMPORTANT!** When purchasing fabric, please account for shrinkage and buy 5% more than required.

3. Fusible woven interfacing, 140cm wide, in meters:

Height, cm	Size		
	34-36	38-42	44-46
1 (154-160)	0.65	0.75	1
2 (162-168)	0.7	0.75	1.05
3 (170-176)	0.75	0.8	1.1
4 (178-184)	0.75	0.85	1.15

Fusible woven interfacing, 55" wide, in yards:

Height, ft	Size		
	34-36	38-42	44-46
1 (5'1"-5'3")	3/4	7/8	1 1/8
2 (5'4"-5'6")	3/4	7/8	1 1/8
3 (5'7"-5'9")	7/8	7/8	1 1/4
4 (5'10"-6'1")	7/8	7/8	1 1/4

4. Four buttons 1.7-1.8cm (5/8"-3/4") in diameter

5. Two 2cm (3/4") wide D-rings

5. Matching thread, 1 spool

## TOOLS AND EQUIPMENT

- Sewing machine for construction
- Buttonhole foot for your sewing machine
- Stitch-in-the-ditch foot for your sewing machine (optional)

# PATTERN PIECES LIST

---

## 1. From main fabric:

- Front – cut 2
- Side front – cut 2
- Back – cut 1 on fold
- Side back – cut 2
- Back neck facing – cut 1 on fold
- Front facing – cut 2
- Left tab – cut 1
- Right tab – cut 1
- Top welt – cut 2
- Bottom welt – cut 2
- Bottom pocket bag – cut 2

## 2. From lining:

- Front lining – cut 2
- Side front lining – cut 2
- Back lining – cut 1 on fold
- Side back lining – cut 2
- Top pocket bag lining – cut 2

## 3. From interfacing:

- Front – cut 2
- Side front – cut 2
- Back – cut 1 on fold
- Side back – cut 2
- Back neck facing – cut 1 on fold
- Front facing – cut 2
- Left tab – cut 1
- Right tab – cut 1
- Top welt – cut 2
- Bottom welt – cut 2

**IMPORTANT!** Don't forget to transfer all pattern markings and notches onto the fabric.

You will also need to cut two strips of interfacing to reinforce the pocket opening (measure the length on the pattern piece). The grainline on the strips is along the long side (along the interfacing selvedge). Apply fusible stay tape along the armhole edges on the back and front pieces, as well as the back and front side panels; neckline edges on the back and front pieces, front shoulder edges, bottom edge of the front and along the inverted V detail on the back piece. The stay tape is fused at 8mm (just under 3/8") from the edge.

# SEAM ALLOWANCES

---

Pattern pieces include the following seam allowances:

- All edges — 1cm (3/8")

Take this into account when laying out pattern pieces on the fabric.

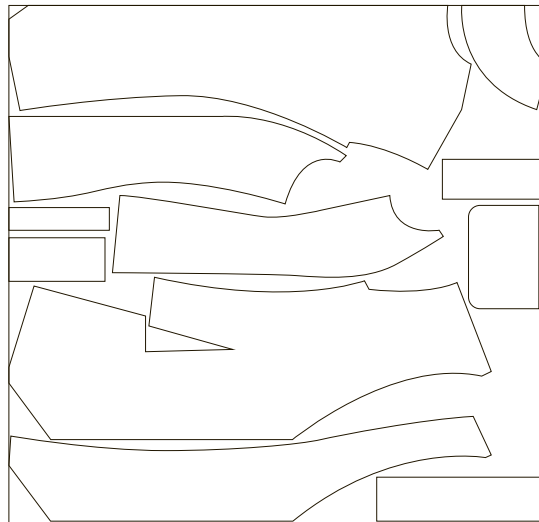
# CUTTING LAYOUT

---

Main fabric, 140cm (55") wide, cut on fold,  
with nap and a directional print

Sizes 34-36

*Fold*

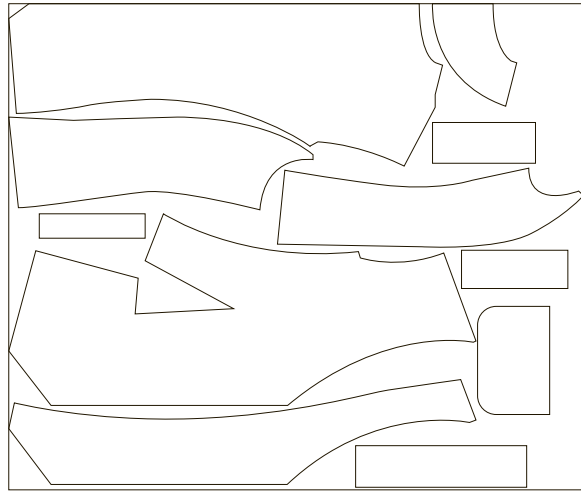


*Selvedge*



## Sizes 38-42

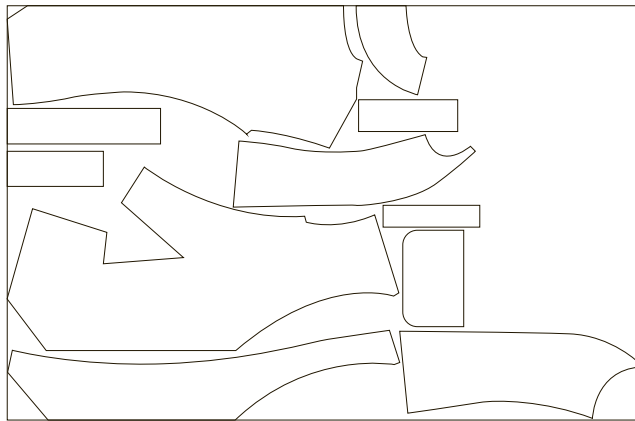
*Fold*



*Selvedge*

## Sizes 44-46 (heights 1-3)

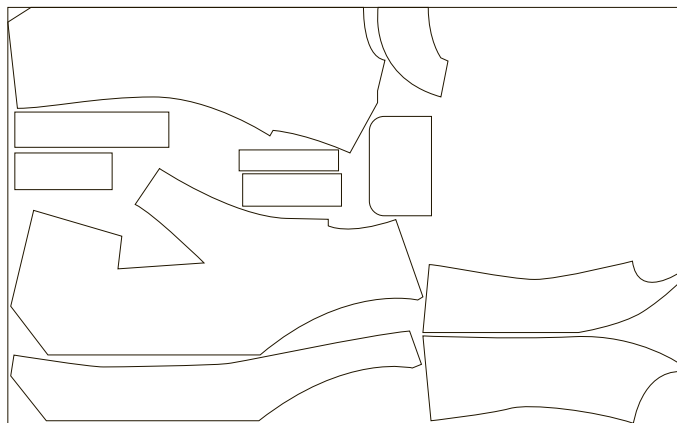
*Fold*



*Selvedge*

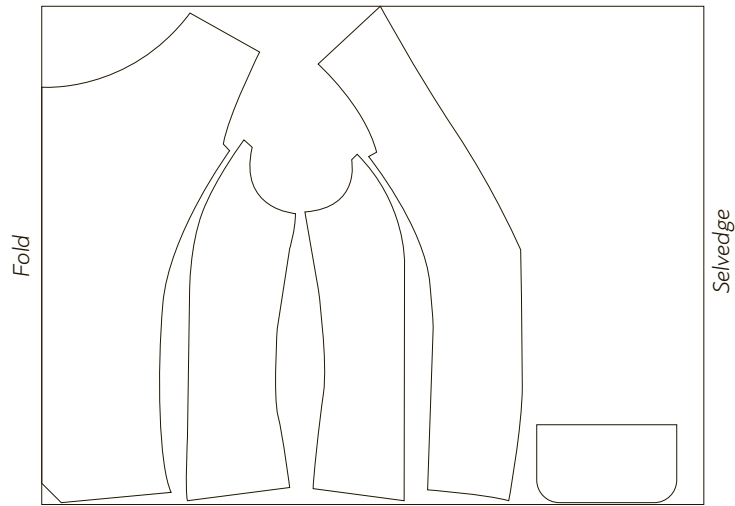
## Sizes 44-46 (height 4)

*Fold*

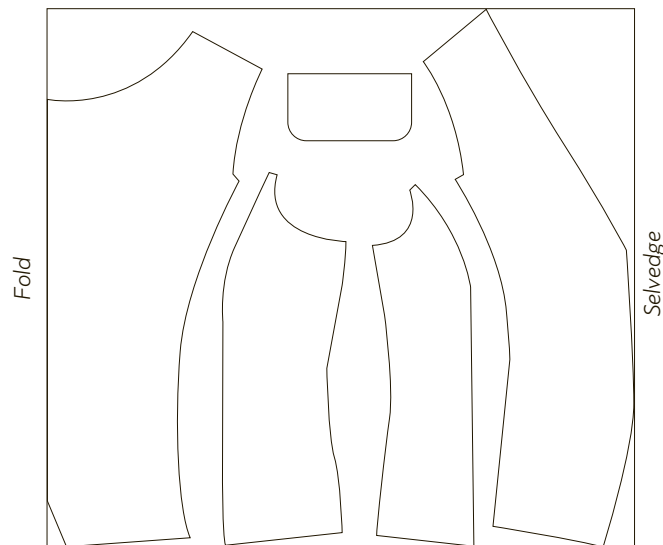


*Selvedge*

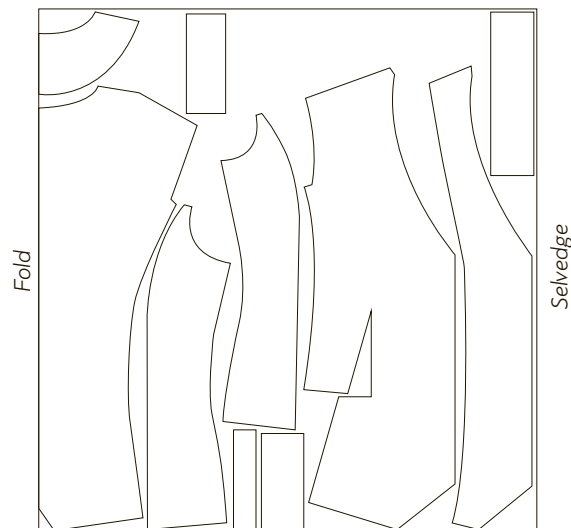
Lining fabric, 140cm (55") wide, cut on fold  
Sizes 34-36



Sizes 38-46

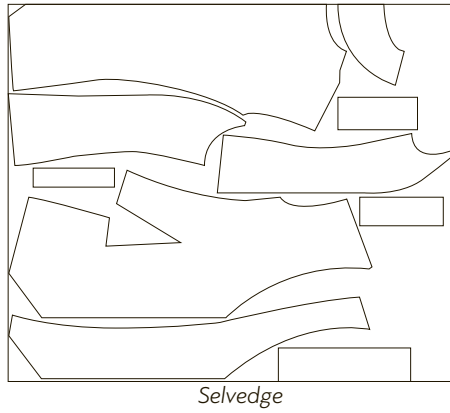


Interfacing, 140cm (55") wide, cut on fold  
Sizes 34-36



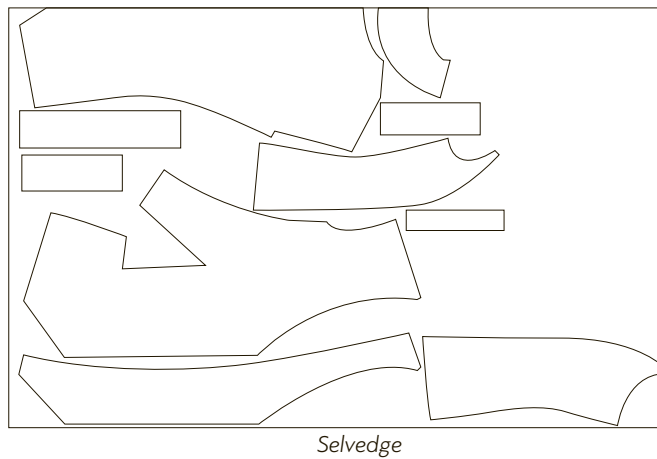
Sizes 38-42

*Fold*



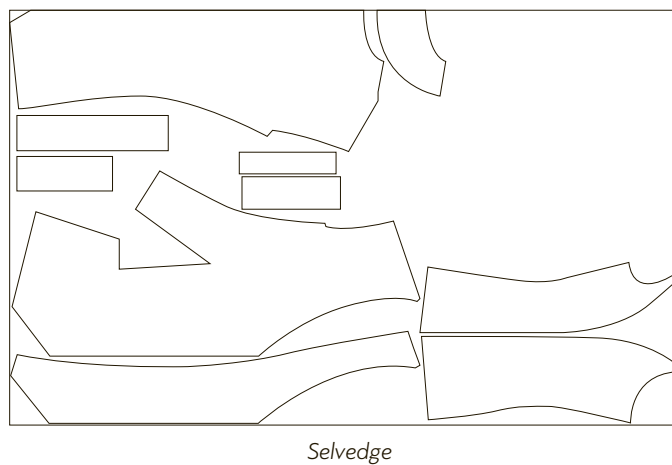
Sizes 44-46 (heights 1-3)

*Fold*



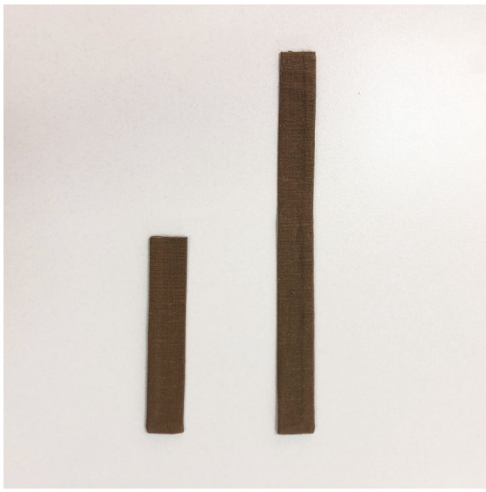
Sizes 44-46 (heights 1-3)

*Fold*



**READY? LET'S GET SEWING!**

---



Turn the right and left tab pieces right side out, straighten the edges and push out the corners.



Press the finished tabs.



Place the left tab to the left princess seam edge on the back piece, between the notches. Place the right tab to the right princess seam edge on the back piece, between the notches. Pin and baste the tabs in place.



Place the back and the side back pieces right sides together along the princess seam edges. Align the edges, pin, baste, and stitch on the machine. Backstitch at the beginning and end.