

FROM THE FOUNDER OF THE #VIKISEWS BRAND



Back in 2016, when I was working on my first set of sewing instructions, I was trying to write them in such a way that even a complete beginner could easily understand and use them to create their very first garment. These instructions laid the foundation for the Vikisews brand, its vision and its mission. I wanted to create modern patterns with the utmost detailed and clear instructions.

Now, with each new collection we are constantly improving our instructions, amending them and adding more relevant details. By the time the final product reaches you, our drafters, correctors, and editors would have spent weeks perfecting every word and every photograph. If you compile a few of our instructions together, you will get a sewing manual that will assist you in sewing all kinds of garments at any difficulty level.

And I would be very happy if these instructions helped you to turn your hobby into a lifelong passion... Enjoy the process! Create your ultimate dream wardrobe! Wear your garments proudly for years to come!

If you have any questions, please contact us at info@vikisews.com — we are always there to help.



MAEVE PATTERN DESCRIPTION

Maeve is a loose-fitting zip-up hoodie with a straight silhouette. The front features patch pockets and a separating zipper. The garment has drop shoulders and long, loose-fitting shirt sleeves finished with cuffs. There is a decorative panel attached by coverstitching all along the shoulder and sleeve length, with raw edges left unfinished. The semi-fitted hood features one center back seam. The bottom edge of the garment is finished with a waistband. Maeve is below-hip length.



IMPORTANT!

The contents of this pattern are copyright protected and belong exclusively to Vikisews. You may use Vikisews patterns for personal use. It is prohibited to share Vikisews patterns and instructions with third parties, as well as to publish patterns and instructions online for public access. **Non-compliance with the mentioned rules is a violation of the US copyright law and may result in civil liability and criminal prosecution.**

You may use Vikisews patterns for commercial use, to sew custom-made garments and/or create fashion collections, on the condition that the patterns are solely used in a manufacturing setting and are not further shared with individuals.

TOTAL EASE ALLOWANCE

	Bust ease	Waistline ease	Hipline ease	Upper arm ease
cm	37.2–51.3	54.2–68.2	20.6–35.6	16.4–22.1
inches	14 5/8–20 1/4	21 3/8–26 7/8	8 1/8–14	6 1/2–8 3/4

GARMENT LENGTH, SLEEVE LENGTH

Height, cm	Back length including waistband, cm	Sleeve length including shoulder width and cuff, cm
1 (154–160)	68.7	76.6–78.2
2 (162–168)	71.7	78.6–80.2
3 (170–176)	74.7	80.6–82.2
4 (178–184)	77.7	82.6–84.2

Height, ft	Back length including waistband, in	Sleeve length including shoulder width and cuff, in
1 (5'1"–5'3")	27	30 1/8–30 3/4
2 (5'4"–5'6")	28 1/4	31–31 5/8
3 (5'7"–5'9")	29 3/8	31 3/4–32 3/8
4 (5'10"–6'1")	30 5/8	32 1/2–33 1/8

SUGGESTED FABRIC

To sew this hoodie, choose non-stretch or low-stretch, medium-weight knit fabrics. The fiber content can include natural fibers, artificial fibers, blends and synthetics.

The following fabrics are recommended: thick French terry, thick sweatshirt fleece.

Attention! We do not recommend using lightweight fabrics.

As an additional fabric for the waistband and cuffs, we recommend using rib knits or ready-made cuffs.

The hoodie in the photo is made of thick French terry. The fabric is medium weight, soft, and low-stretch. The fiber content is 100% cotton. The fabric weight is 370 g/m².

The cuffs and waistband are made of ribbing. The fabric is heavyweight and medium stretch. The fiber content is 95% cotton and 5% elastane. The fabric weight is 450 g/m².

FABRIC AND NOTIONS REQUIREMENTS

1. Main fabric, 140 cm wide, with a directional print/nap, in meters:

Height, cm	Size			
	XS-S	M	L	XL
1 (154–160)	1.65	1.65	1.65	1.7
2 (162–168)	1.7	1.75	1.75	1.75
3 (170–176)	1.75	1.8	1.8	1.8
4 (178–184)	1.8	1.85	1.9	1.9

Main fabric, 55" wide, with a directional print/nap, in yards:

Height, ft	Size			
	XS-S	M	L	XL
1 (5'1"–5'3")	1 3/4	1 3/4	1 3/4	1 7/8
2 (5'4"–5'6")	1 7/8	1 7/8	1 7/8	1 7/8
3 (5'7"–5'9")	1 7/8	2	2	2
4 (5'10"–6'1")	2	2	2 1/8	2 1/8

Main fabric, 180 cm wide, with a directional print/nap, in meters:

Height, cm	Size	
	XS	S-XL
1 (154–160)	1.3	1.35
2 (162–168)	1.35	1.4
3 (170–176)	1.4	1.45
4 (178–184)	1.45	1.5

Main fabric, 71" wide, with a directional print/nap, in yards:

Height, ft	Size	
	XS	S-XL
1 (5'1"–5'3")	1 3/8	1 1/2
2 (5'4"–5'6")	1 1/2	1 1/2
3 (5'7"–5'9")	1 1/2	1 5/8
4 (5'10"–6'1")	1 5/8	1 5/8

IMPORTANT! When purchasing fabric, please account for shrinkage and buy 5% more than required.

2. Additional fabric (ribbing), 120 cm (47") wide, for all sizes and heights — 0.35 m (3/8 yd).

3. Lightweight knit interfacing, 140 cm wide, in meters:

Height, cm	Size		
	XS	S-L	XL
1 (154–160)	0.3	0.3	0.3
2 (162–168)	0.3	0.3	0.3
3 (170–176)	0.3	0.3	0.35
4 (178–184)	0.3	0.35	0.35

Lightweight knit interfacing, 55" wide, in yards:

Height, ft	Size
	XS-XL
1 (5'1"–5'3")	3/8
2 (5'4"–5'6")	3/8
3 (5'7"–5'9")	3/8
4 (5'10"–6'1")	3/8

4. Stitched bias-cut fusible stay tape with stitch reinforcement, 1.5 cm (5/8") wide — 1.4 m (1 1/2 yd).
5. One separating zipper, Nos. 3.5–4, for all sizes:

Height, cm	Zipper length, cm	Height, ft	Zipper length, in
1 (154–160)	65	1 (5'1"–5'3")	25 5/8
2 (162–168)	70	2 (5'4"–5'6")	27 1/2
3 (170–176)	70	3 (5'7"–5'9")	27 1/2
4 (178–184)	75	4 (5'10"–6'1")	29 1/2

6. Two zipper top stoppers for adjusting the zipper length (if needed).
7. Twill tape, 1 cm (3/8") wide, for all heights:

Size	XS	S	M	L	XL
cm	44	47	50	52	55
inches	17 3/8	18 1/2	19 5/8	20 1/2	21 5/8

8. Drawstring cord for the hood, 5–7 mm (1/4") wide, for all sizes and heights — 1.3 m (1 3/8 yd).
9. Matching thread — 5 spools (1 spool for the sewing machine + 4 spools for the overlocker / 3 spools for the coverstitch machine).

TOOLS AND EQUIPMENT

- sewing machine for construction
- overlocker for construction and finishing raw edges. This may be replaced with a stretch overlock stitch or a zigzag stitch on the sewing machine (overlock or zigzag stitch width 2–3 mm, stitch length 2.5 mm)
- coverstitch or coverlock machine for attaching the decorative panel, finishing the pockets and hood. If you don't have a coverstitch machine, it may be replaced with a twin needle on any regular sewing machine that can do a zigzag stitch
- buttonhole foot for the sewing machine
- one-sided foot for the sewing machine

IMPORTANT! We recommend using specialty needles when working with knit fabrics (for example, *STRETCH*, *SUPER STRETCH*, *JERSEY*, etc.). When sewing, a ball-shaped needle point pushes the knit loops apart without piercing the threads.

PATTERN PIECES LIST

1. From main fabric:

- front — cut 2
- back — cut 1 on fold
- front sleeve — cut 2
- back sleeve — cut 2
- shoulder and sleeve panel — cut 2
- hood — cut 2
- pocket — cut 2

2. From additional fabric (ribbing):

- back waistband — cut 1 on fold
- front waistband — cut 2
- cuff — cut 2

IMPORTANT! Don't forget to transfer all pattern markings and notches onto the fabric.

Additionally, cut the following pieces from interfacing:

- two strips, 3.5 cm (1 3/8") wide (length according to the pattern), to interface the pocket opening seam allowance on the pockets
- two 2×2 cm (3/4×3/4") square pieces to interface the buttonholes on the hood.

The interfacing strips should be cut on the straight grain (parallel to the selvedge).

SEAM ALLOWANCES

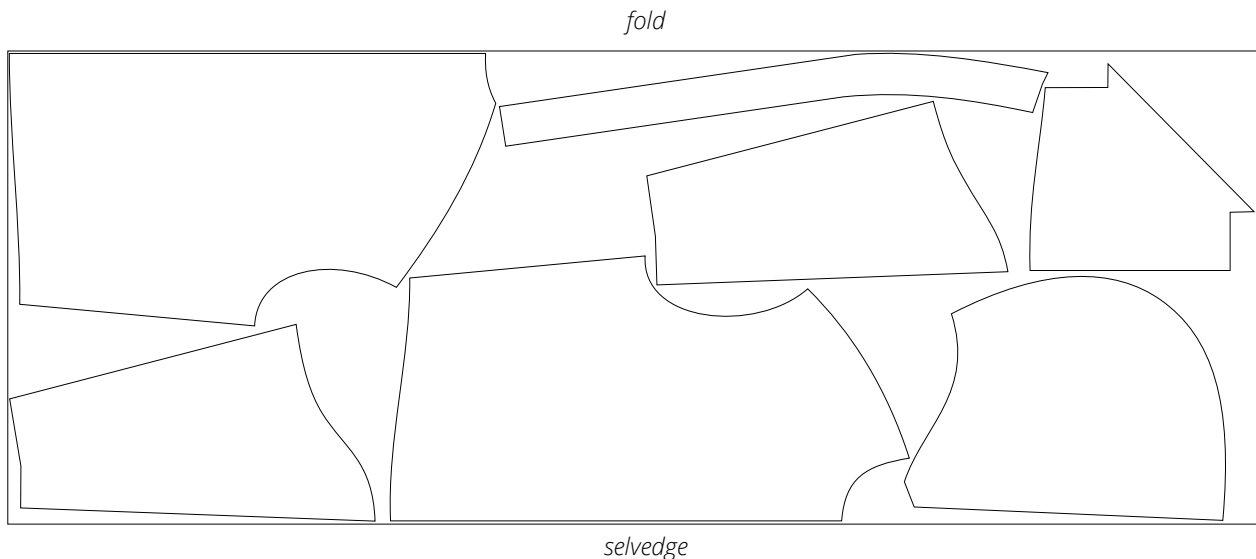
All pattern pieces include the seam allowances as follows:

- pocket opening edge — 2.5 cm (1")
- hood front edge — 3.5 cm (1 3/8")
- all other edges — 1 cm (3/8")

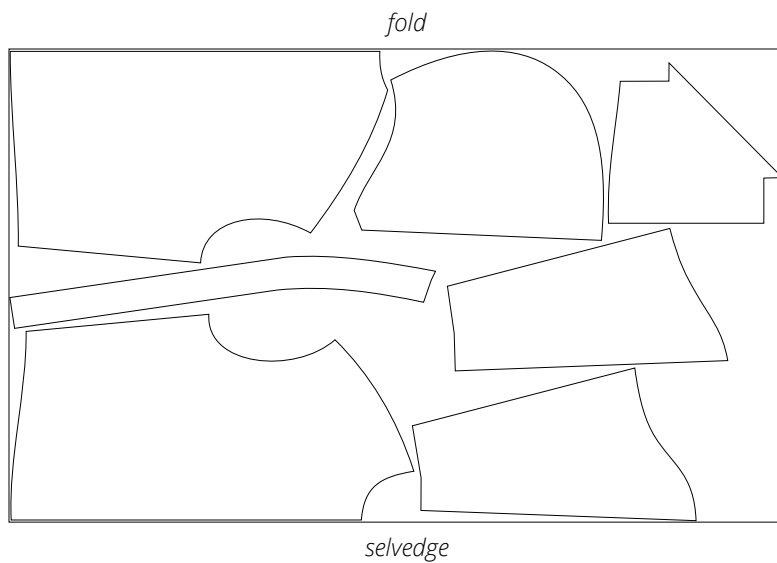
Take this into account when laying out pattern pieces on the fabric.

CUTTING LAYOUT

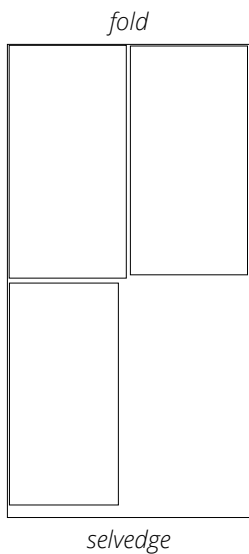
Main fabric, 140 cm (55") wide, with a directional print/nap, cut on fold, for all sizes in all heights



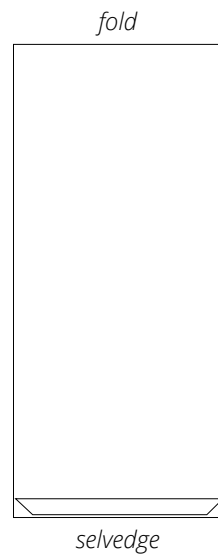
Main fabric, 180 cm (71") wide, with a directional print/nap, cut on fold, for all sizes in all heights



Additional fabric (ribbing), 120 cm (47") wide, with a directional print/nap, cut on fold, for all sizes in all heights



Interfacing, 140 cm (55") wide, cut on fold, for all sizes in all heights



READY? LET'S GET SEWING!



Stitch on the overlocker, with the back piece facing up.

Use a 4-thread overlocker for this step, as well as for the following similar steps. You can replace the overlocker with a stretch or zigzag stitch on your sewing machine.

Important! All pattern pieces include 1 cm (3/8") seam allowances. The overlocker stitch width is 7 mm (just over 1/4"), so 3 mm (1/8") need to be trimmed off. You can either trim the seam allowances beforehand or let the overlocker cut off the extra fabric while stitching.



Press the seam flat.



Press the seam allowance towards the back sleeve piece.