

FROM THE FOUNDER OF THE #VIKISEWS BRAND

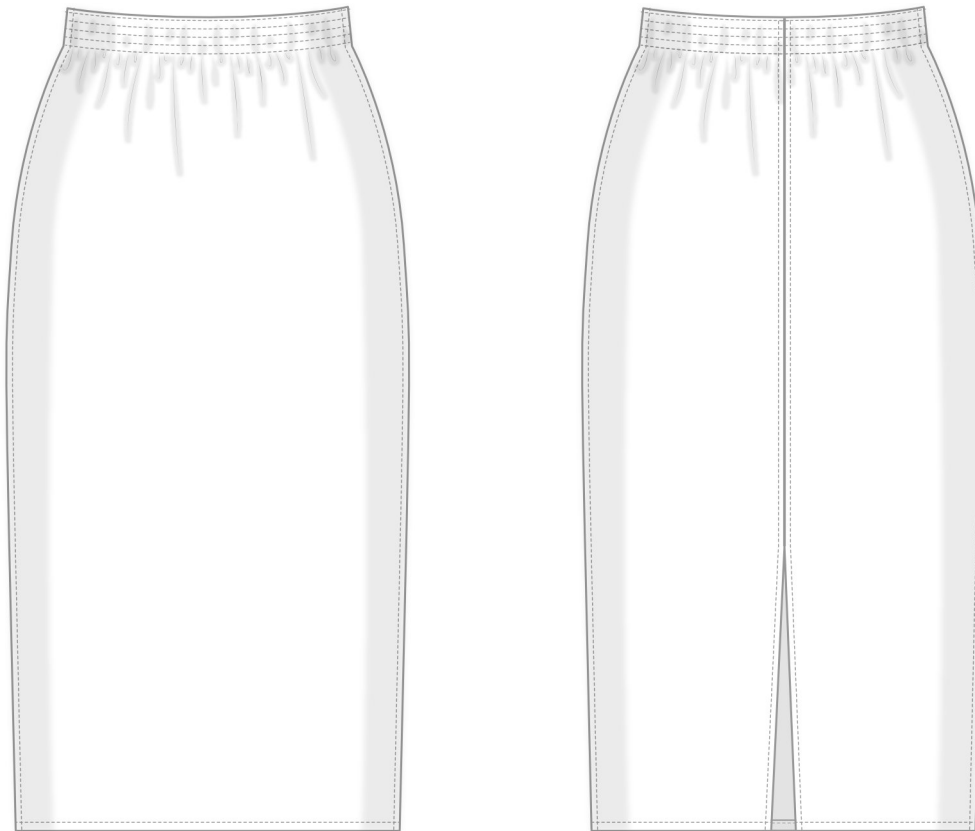


Back in 2016, when I was working on my first set of sewing instructions, I was trying to write them in such a way that even a complete beginner could easily understand and use them to create their very first garment. These instructions laid the foundation for the Vikisews brand, its vision and its mission. I wanted to create modern patterns with the utmost detailed and clear instructions.

Now, with each new collection we are constantly improving our instructions, amending them and adding more relevant details. By the time the final product reaches you, our drafters, correctors, and editors would have spent weeks perfecting every word and every photograph. If you compile a few of our instructions together, you will get a sewing manual that will assist you in sewing all kinds of garments at any difficulty level.

And I would be very happy if these instructions helped you to turn your hobby into a lifelong passion... Enjoy the process! Create your ultimate dream wardrobe! Wear your garments proudly for years to come!

If you have any questions, please contact us at info@vikisews.com — we are always there to help.



LIAN PATTERN DESCRIPTION

Lian is a close-fitting, straight-cut skirt. The top edge is finished with an elasticated casing. The side seams and the center back seam feature topstitching. There is a slit in the center back seam. Lian is below-knee length.



IMPORTANT!

The contents of this pattern are copyright protected and belong exclusively to Vikisews. You may use Vikisews patterns for personal use. It is prohibited to share Vikisews patterns and instructions with third parties, as well as to publish patterns and instructions online for public access. **Non-compliance with the mentioned rules is a violation of the US copyright law and may result in civil liability and criminal prosecution.**

You may use Vikisews patterns for commercial use, to sew custom-made garments and/or create fashion collections, on the condition that the patterns are solely used in a manufacturing setting and are not further shared with individuals.

TOTAL EASE ALLOWANCE

	Waistline ease (estimated)	Hipline ease
cm	26.2–32	5–7.3
inches	10 3/8–12 5/8	2–2 7/8

GARMENT LENGTH

Height, cm	Center back length, cm	Height, ft	Center back length, in
1 (154–160)	68.7–69.8	1 (5'1"–5'3")	27–27 1/2
2 (162–168)	71.8–72.8	2 (5'4"–5'6")	28 1/4–28 5/8
3 (170–176)	74.8–75.8	3 (5'7"–5'9")	29 1/2–29 7/8
4 (178–184)	77.8–78.8	4 (5'10"–6'1")	30 5/8–31

SUGGESTED FABRIC

To sew this skirt, choose outerwear and suiting fabrics with the following properties: medium weight, non-stretch, and structured. The fiber content can include natural fibers, artificial fibers, blends, and synthetics.

The following fabrics are recommended: raincoat fabrics, dewspo, taslan, gabardine, denim, suiting.

Attention! We do not recommend stretchy knit fabrics or lightweight materials (lightweight denim, lightweight outerwear fabrics).

The skirt in the photo is made of silk suiting. The fabric is medium weight, non-stretch, and structured. The fiber content is 60% silk and 40% polyester. The fabric weight is 150 g/m².

FABRIC AND NOTIONS REQUIREMENTS

1. Main fabric, 140 cm wide, 130–180 g/m², with a directional print/nap, in meters:

Height, cm	Size		
	34–38	40–44	46–52
1 (154–160)	0.85	0.85	0.85
2 (162–168)	0.85	0.85	0.9
3 (170–176)	0.9	0.9	0.9
4 (178–184)	0.9	0.95	0.95

Main fabric, 55" wide, 130–180 g/m², with a directional print/nap, in yards:

Height, ft	Size		
	34–38	40–44	46–52
1 (5'1"–5'3")	7/8	7/8	7/8
2 (5'4"–5'6")	7/8	7/8	1
3 (5'7"–5'9")	1	1	1
4 (5'10"–6'1")	1	1	1

IMPORTANT! When purchasing fabric, please account for shrinkage and buy 5% more than required.

2. Elastic, 3 cm (1 1/8") wide — 50–88 cm (19 5/8–34 5/8"), depending on the size. The exact elastic length is specified in the pattern
3. Stitched straight-grain fusible stay tape, 1 cm (3/8") wide — 61–77 cm (24–30 3/8")
4. Matching thread — 1 spool for the sewing machine

TOOLS AND EQUIPMENT

- sewing machine for construction
- stitch-in-the-ditch foot for the sewing machine (optional)
- elastic threader (may be replaced with a safety pin)

PATTERN PIECES LIST

From main fabric:

- front — cut 1 on fold
- back — cut 2
- front facing — cut 1
- back facing — cut 1

IMPORTANT! Don't forget to transfer all pattern markings and notches onto the fabric.

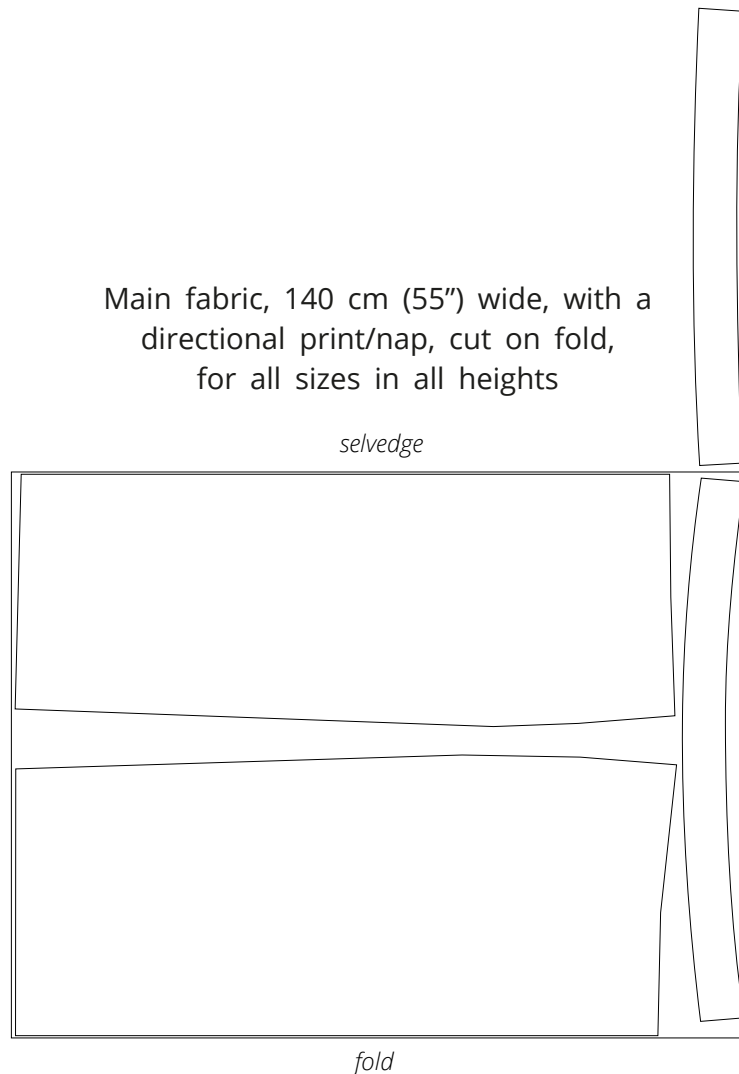
SEAM ALLOWANCES

All pattern pieces include seam allowances as follows:

- side and center back seam allowances, hem allowance — 1.5 cm (5/8")
- all other edges — 1 cm (3/8")

Take this into account when laying out the pattern pieces on the fabric.

CUTTING LAYOUT

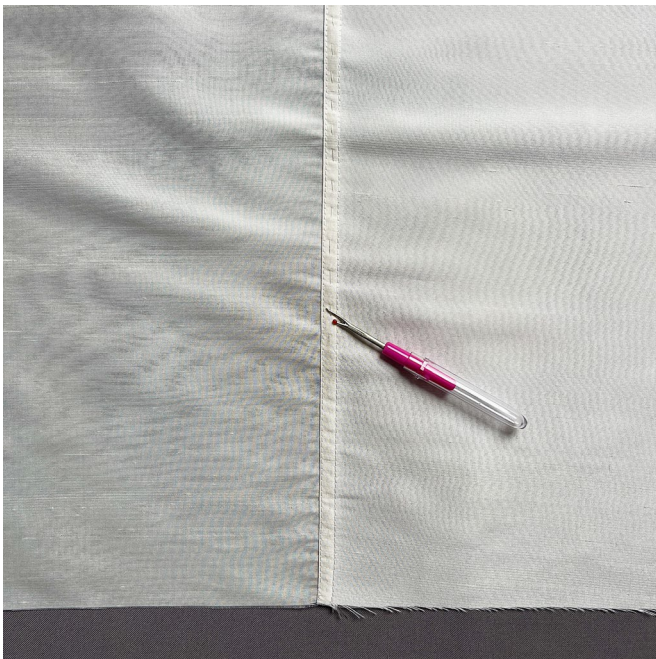


Attention! Cut one each of the front facing and back facing pieces on a single layer.

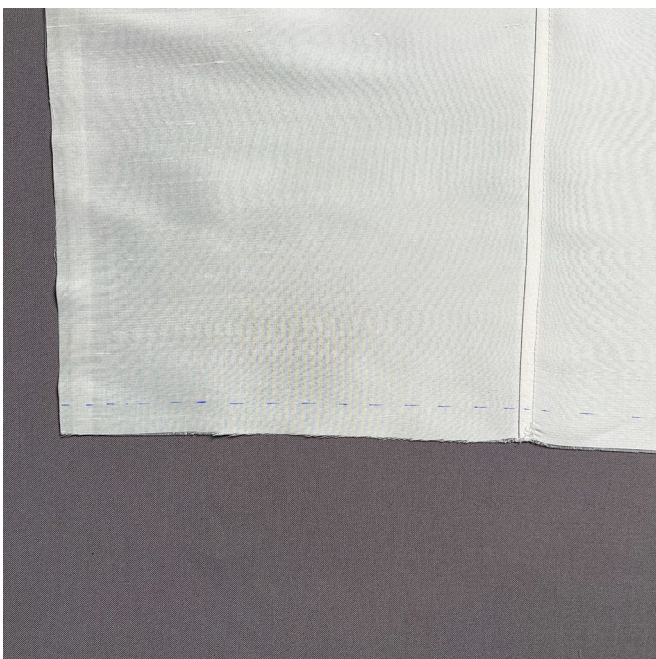
READY? LET'S GET SEWING!



Topstitch the side seam allowances to the front piece at 1-2 mm from the fold.



Remove the basting stitches and press the seams.



Finish the bottom edge with a double-fold hem.

Using tailor's chalk, mark the hemline on the right side of the garment.