

FROM THE FOUNDER OF THE #VIKISEWS BRAND



Back in 2016, when I was working on my first set of sewing instructions, I was trying to write them in such a way that even a complete beginner could easily understand and use them to create their very first garment. These instructions laid the foundation for the Vikisews brand, its vision and its mission. I wanted to create modern patterns with the utmost detailed and clear instructions.

Now, with each new collection we are constantly improving our instructions, amending them and adding more relevant details. By the time the final product reaches you, our drafters, correctors, and editors would have spent weeks perfecting every word and every photograph. If you compile a few of our instructions together, you will get a sewing manual that will assist you in sewing all kinds of garments at any difficulty level.

And I would be very happy if these instructions helped you to turn your hobby into a lifelong passion... Enjoy the process! Create your ultimate dream wardrobe! Wear your garments proudly for years to come!

If you have any questions, please contact us at info@vikisews.com — we are always there to help.



QUINN PATTERN DESCRIPTION

Quinn is a medium-sized, structured, lined bag made of real leather. It has two compartments, a zippered divider pocket, and two stiff set-in handles. There is also a zipper pocket on the back panel. The bag shape is created with side pleats. Quinn is decorated with topstitching and has a tuck lock closure.



IMPORTANT!

The contents of this pattern are copyright protected and belong exclusively to Vikisews. You may use Vikisews patterns for personal use. It is prohibited to share Vikisews patterns and instructions with third parties, as well as to publish patterns and instructions online for public access. **Non-compliance with the mentioned rules is a violation of the US copyright law and may result in civil liability and criminal prosecution.**

You may use Vikisews patterns for commercial use, to sew custom-made garments and/or create fashion collections, on the condition that the patterns are solely used in a manufacturing setting and are not further shared with individuals.

BAG DIMENSIONS

	Bag bottom length	Bag bottom width	Bag height at center	Handle length from top bag edge
cm	37	10	17	75.4
inches	14 5/8	3 7/8	6 3/4	29 5/8

SUGGESTED FABRIC

To sew this bag, choose heavyweight, structured and non-stretch fabrics. The following fabrics are recommended: faux leather or faux suede with a woven or suede backing, real leather.

The bag in the photo is made of real leather. The material is thick, structured and non-stretch. The leather is 0.8 mm thick.

The fiber content of the lining is 100% viscose. The fabric weight is 50 g/m².

FABRIC AND NOTIONS REQUIREMENTS

1. Real leather, 70 cm (27 1/2") wide and 126 cm (49 5/8") long hide — 88.2 dm² (9.5 ft²)

Attention! Real leather is typically sold in hides that come in different sizes and may have inconsistent thickness. Moreover, hides may have some cuts or tears. We recommend cutting out the paper pattern pieces in advance and taking them to the store with you so you can choose the appropriate hide on the spot.

2. Main fabric, 140 cm (55") wide — 85 cm (33 1/2")

3. Lining fabric, 140 cm (55") wide — 40 cm (15 3/4")

IMPORTANT! When purchasing fabric, please account for shrinkage and buy 5% more than required.

4. Stiffener 1 (2 mm EVA with a glue backing), 140 cm (55") wide — 25 cm (9 7/8")

5. Stiffener 2 (knit or woven interfacing, 40 g/m², 140 cm (55") wide — 50 cm (19 5/8")

6. Stiffener 3 (leather board, 0.8 mm thick), 150 cm (59") wide — 15 cm (5 7/8")

7. One tuck lock for a flap

8. Round cord for handles, 1 cm (3/8") in diameter — 1.5 m (1 5/8 yd)
9. Two zippers for pockets, 30 cm (11 3/4") long
10. Double-sided adhesive tape, 5 mm (just under 1/4") wide
11. Matching topstitching thread (for example, Gütermann No. 30) — 3 spools
12. Matching thread for the lining fabric — 1 spool
13. One bottle of odorless A 240 leather adhesive

TOOLS AND EQUIPMENT

- sewing machine for construction
- stitch-in-the-ditch foot for the sewing machine (optional)
- teflon or walking foot for the sewing machine
- one-sided foot for the sewing machine
- metal ruler, 50 cm (20") long
- gel pen or marker to make markings on leather
- utility knife
- awl
- hammer for leather
- glue spatula
- pliers
- machine needles for leather, size 100–130, depending on the material thickness

PATTERN PIECES LIST

1. From main material:

- body — cut 2
- divider pocket — cut 2
- top flap — cut 1
- bottom flap — cut 1
- handle — cut 2
- top edge facing — cut 2

2. From lining fabric:

- body — cut 2
- divider pocket — cut 2
- top pocket lining — cut 1
- bottom pocket lining — cut 1

3. From stiffener 1 (2 mm EVA with a glue backing):

- body — cut 2
- top flap — cut 1

4. From stiffener 2 (interfacing):

- divider pocket — cut 2
- top edge facing — cut 2

IMPORTANT! Don't forget to transfer all pattern markings and notches onto the fabric.

5. From stiffener 3 (leather board, 0.8 mm thick):

- bottom — cut 2

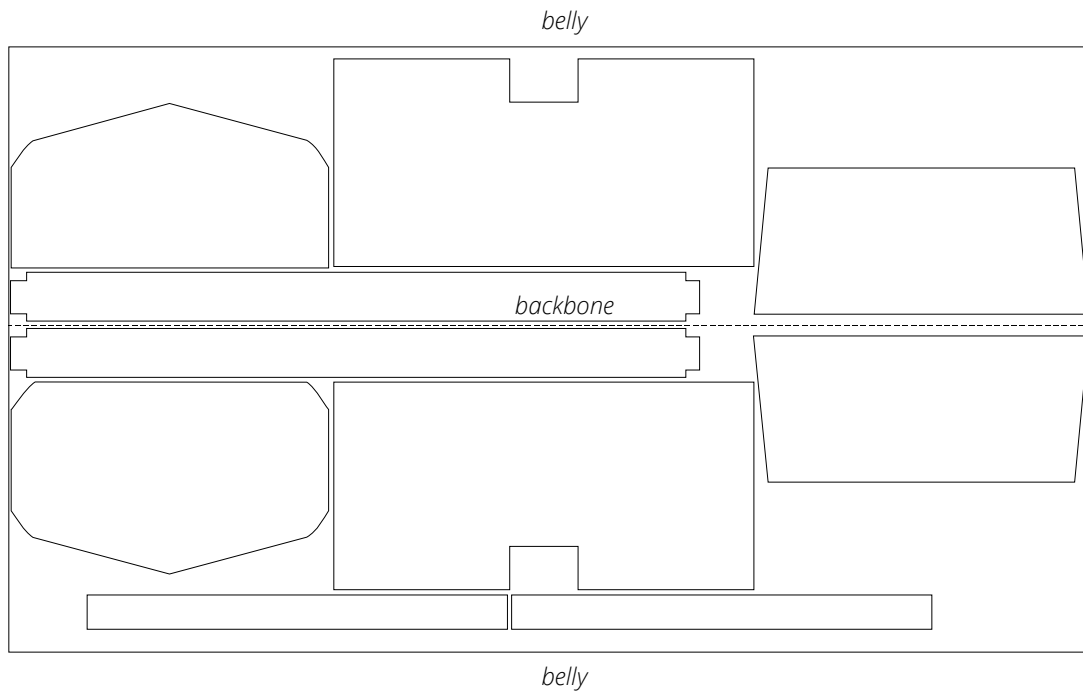
SEAM ALLOWANCES

All pattern pieces include 1 cm (3/8") seam allowances.

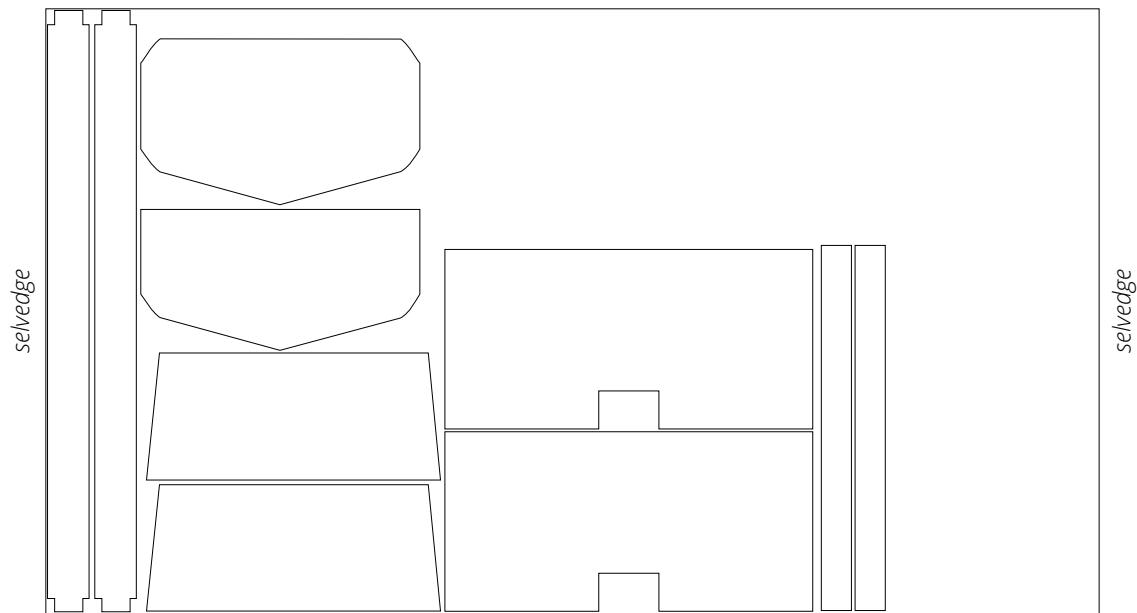
Take this into account when laying out pattern pieces on the fabric.

CUTTING LAYOUT

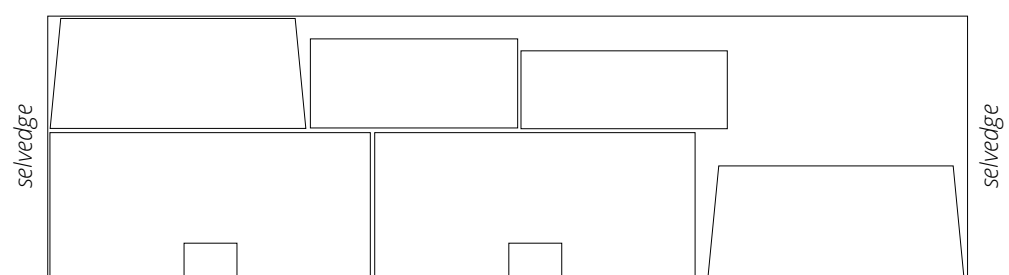
Real leather (one hide), 70 cm (27 1/2") wide and
126 cm (49 5/8") long, 88.2 dm² (9.5 ft²)



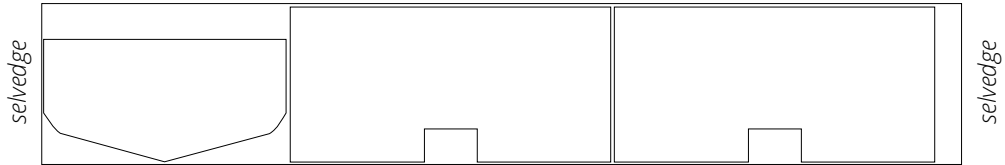
Main fabric, 140 cm (55") wide, with a directional print/nap,
cut on a single layer



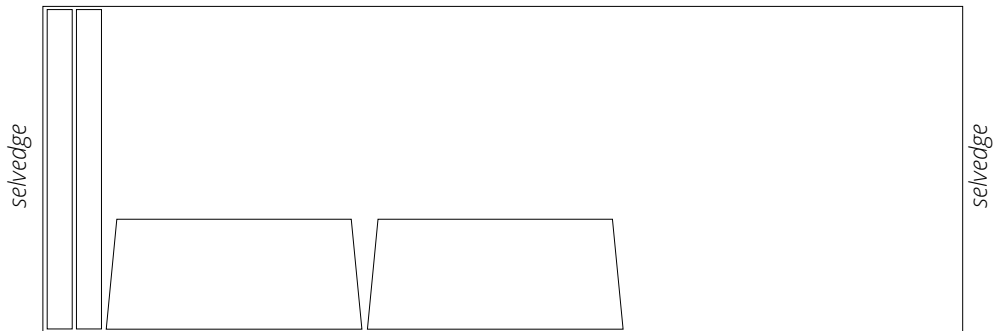
Lining fabric, 140 cm (55") wide, with a directional print,
cut on a single layer



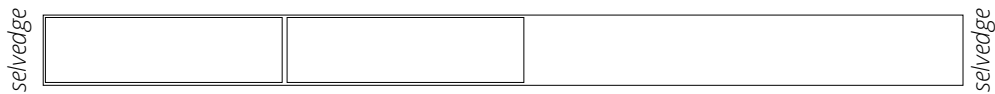
Stiffener 1, 140 cm (55") wide, cut on a single layer



Stiffener 2, 140 cm (55") wide, cut on a single layer



Stiffener 3, 150 cm (59") wide, cut on a single layer



READY? LET'S GET SEWING!



Remove the backing from the adhesive tape, fold the seam allowances to the opposite sides, and stick in place. Tap the center back seam with a hammer.



Working from the right side, topstitch on both sides of the seam at 3 mm (1/8") from it.



Following the pattern markings, topstitch on the right side of the assembled body piece.