

FROM THE FOUNDER OF THE #VIKISEWS BRAND



Back in 2016, when I was working on my first set of sewing instructions, I was trying to write them in such a way that even a complete beginner could easily understand and use them to create their very first garment. These instructions laid the foundation for the Vikisews brand, its vision and its mission. I wanted to create modern patterns with the utmost detailed and clear instructions.

Now, with each new collection we are constantly improving our instructions, amending them and adding more relevant details. By the time the final product reaches you, our drafters, correctors, and editors would have spent weeks perfecting every word and every photograph. If you compile a few of our instructions together, you will get a sewing manual that will assist you in sewing all kinds of garments at any difficulty level.

And I would be very happy if these instructions helped you to turn your hobby into a lifelong passion... Enjoy the process! Create your ultimate dream wardrobe! Wear your garments proudly for years to come!

If you have any questions, please contact us at info@vikisews.com — we are always there to help.



SINEAD PATTERN DESCRIPTION

Sinead is a semi-fitted jacket with a straight cut. The front features princess seams and two patch pockets. There is an off-center zipper closure in the princess seam on the inner side of the right-hand front. The center front parts of the jacket close with metal snaps at the bottom. The two-piece raglan sleeves are semi-fitted and feature slits in the underarm seams. The bottom edges of the sleeves are finished with cuffs that close with metal snaps. The stand collar closes with metal snaps. The jacket is fully lined and features decorative topstitching. Sinead is hip length.



IMPORTANT!

The contents of this pattern are copyright protected and belong exclusively to Vikisews. You may use Vikisews patterns for personal use. It is prohibited to share Vikisews patterns and instructions with third parties, as well as to publish patterns and instructions online for public access. **Non-compliance with the mentioned rules is a violation of the US copyright law and may result in civil liability and criminal prosecution.**

You may use Vikisews patterns for commercial use, to sew custom-made garments and/or create fashion collections, on the condition that the patterns are solely used in a manufacturing setting and are not further shared with individuals.

TOTAL EASE ALLOWANCE

| | Bust ease | Waistline ease | Hipline ease | Upper arm ease |
|--------|---------------|----------------|--------------|----------------|
| cm | 41.6–32.6 | 60.7–51.3 | 33.7–23.8 | 22.4–17.2 |
| inches | 16 3/8–12 7/8 | 23 7/8–20 1/4 | 13 1/4–9 3/8 | 8 7/8–6 3/4 |

GARMENT LENGTH, SLEEVE LENGTH

| Height, cm | Center back length, cm | Sleeve length including shoulder width and cuff, cm |
|-------------|------------------------|---|
| 1 (154–160) | 67.5–69 | 70.6–73 |
| 2 (162–168) | 70.5–72 | 72.6–75 |
| 3 (170–176) | 73.5–74.9 | 74.6–77 |
| 4 (178–184) | 76.5–77.9 | 76.6–79 |

| Height, ft | Center back length, in | Sleeve length including shoulder width and cuff, in |
|----------------|------------------------|---|
| 1 (5'1"–5'3") | 26 5/8–27 1/8 | 27 3/4–28 3/4 |
| 2 (5'4"–5'6") | 27 3/4–28 3/8 | 28 5/8–29 1/2 |
| 3 (5'7"–5'9") | 28 7/8–29 1/2 | 29 3/8–30 3/8 |
| 4 (5'10"–6'1") | 30 1/8–30 5/8 | 30 1/8–31 1/8 |

SUGGESTED FABRIC

To sew this jacket, choose fabrics with the following properties:

- medium weight, soft, non-stretch or low-stretch, opaque
- the fiber content can include natural fibers (cotton), blends (cotton + polyester, cotton + viscose, etc.), and synthetics (polyester, polyester + polyurethane)
- the following fabrics are recommended: faux leather, faux suede, heavyweight denim, coating wool

Attention! We do not recommend stretchy knit fabrics and lightweight sheer fabrics (chiffon, organza, stretch lace).

For the lining, choose lining fabrics made of artificial fibers (viscose), blends (viscose + elastane, viscose + polyester), or synthetics (polyester, polyester + elastane).

The jacket in the photo is made of real leather. The leather is medium weight, soft, and low-stretch. The hide is 1.2 mm thick.

The fiber content of the lining is a blend of viscose (45%) and polyester (55%). The fabric weight is 100 g/m².

FABRIC AND NOTIONS REQUIREMENTS

1. Main fabric, 140 cm wide, 250–280 g/m², with a directional print/nap, in meters:

| Height, cm | Size | | | | |
|-------------|------|------|------|------|------|
| | XS | S | M | L | XL |
| 1 (154–160) | 1.95 | 2 | 2.15 | 2.15 | 2.45 |
| 2 (162–168) | 2 | 2.1 | 2.25 | 2.25 | 2.5 |
| 3 (170–176) | 2.05 | 2.15 | 2.3 | 2.3 | 2.6 |
| 4 (178–184) | 2.15 | 2.2 | 2.35 | 2.35 | 2.65 |

Main fabric, 55" wide, 250–280 g/m², with a directional print/nap, in yards:

| Height, ft | Size | | | | |
|----------------|-------|-------|-------|-------|-------|
| | XS | S | M | L | XL |
| 1 (5'1"–5'3") | 2 1/8 | 2 1/8 | 2 3/8 | 2 3/8 | 2 5/8 |
| 2 (5'4"–5'6") | 2 1/8 | 2 1/4 | 2 1/2 | 2 1/2 | 2 3/4 |
| 3 (5'7"–5'9") | 2 1/4 | 2 3/8 | 2 1/2 | 2 1/2 | 2 7/8 |
| 4 (5'10"–6'1") | 2 3/8 | 2 3/8 | 2 5/8 | 2 5/8 | 2 7/8 |

2. Lining fabric, 140 cm wide, 100 g/m², in meters:

| Height, cm | Size | | |
|-------------|------|------|------|
| | XS | S-L | XL |
| 1 (154–160) | 1.4 | 1.45 | 2.45 |
| 2 (162–168) | 1.45 | 1.5 | 2.5 |
| 3 (170–176) | 1.5 | 1.55 | 2.6 |
| 4 (178–184) | 1.55 | 1.6 | 2.7 |

Lining fabric, 55" wide, 100 g/m², in yards:

| Height, ft | Size | | |
|----------------|-------|-------|-------|
| | XS | S-L | XL |
| 1 (5'1"–5'3") | 1 1/2 | 1 5/8 | 2 5/8 |
| 2 (5'4"–5'6") | 1 5/8 | 1 5/8 | 2 3/4 |
| 3 (5'7"–5'9") | 1 5/8 | 1 3/4 | 2 7/8 |
| 4 (5'10"–6'1") | 1 3/4 | 1 3/4 | 3 |

3. Lightweight knit or woven interfacing, 140 cm, 40 g/m² wide, in meters:

| Height, cm | Size | | | | |
|-------------|------|------|------|------|------|
| | XS | S | M | L | XL |
| 1 (154–160) | 0.75 | 0.75 | 0.75 | 0.75 | 0.8 |
| 2 (162–168) | 0.75 | 0.75 | 0.8 | 0.8 | 0.8 |
| 3 (170–176) | 0.8 | 0.8 | 0.8 | 0.85 | 0.85 |
| 4 (178–184) | 0.8 | 0.85 | 0.85 | 0.85 | 0.9 |

Lightweight knit or woven interfacing, 55" wide, 40 g/m², in yards:

| Height, ft | Size | |
|----------------|------|-----|
| | XS-L | XL |
| 1 (5'1"–5'3") | 7/8 | 7/8 |
| 2 (5'4"–5'6") | 7/8 | 7/8 |
| 3 (5'7"–5'9") | 7/8 | 7/8 |
| 4 (5'10"–6'1") | 7/8 | 1 |

IMPORTANT! When purchasing fabric, please account for shrinkage and buy 5% more than required.

4. Stitched bias-cut fusible stay tape with stitch reinforcement, 1.5 cm (5/8") wide — 4.1–4.7 m (4 1/2–5 1/8 yd)

5. One separating zipper, 70–82 cm (27 1/2–32 1/4") long

6. Six metal set-in snaps, 12–15 mm (1/2–5/8") in diameter

7. Double-sided adhesive tape, 5 mm (just under 1/4") wide

8. Double-sided adhesive tape, 10 mm (3/8") wide

9. Matching thread — 1 spool for the sewing machine

10. Matching topstitching thread (for example, Gutermann Top Stitch, 30 m) — 3 spools

TOOLS AND EQUIPMENT

- sewing machine for construction
- stitch-in-the-ditch foot for the sewing machine (optional)
- one-sided foot for the sewing machine
- teflon or walking foot for the sewing machine
- press tool with a set of molds for installing snaps and grommets, hole puncher
- gel pen or marker to make markings on leather
- pliers
- leatherwork rubber mallet

PATTERN PIECES LIST

1. From main fabric:

- center front — cut 4
- side front — cut 2
- back — cut 1 on fold
- front sleeve — cut 2
- back sleeve — cut 2
- stand collar — cut 2
- cuff — cut 2
- patch pocket — cut 2

2. From lining fabric:

- front lining — cut 2
- back lining — cut 1 on fold
- front sleeve lining — cut 2
- back sleeve lining — cut 2
- pocket lining — cut 2

***IMPORTANT!** Don't forget to transfer all pattern markings and notches onto the fabric.*

3. From interfacing:

- center front — cut 2
- stand collar — cut 2
- cuff — cut 2 (1/2 of the width)
- patch pocket — cut 2 (partial)

SEAM ALLOWANCES

All pattern pieces include seam allowances as follows:

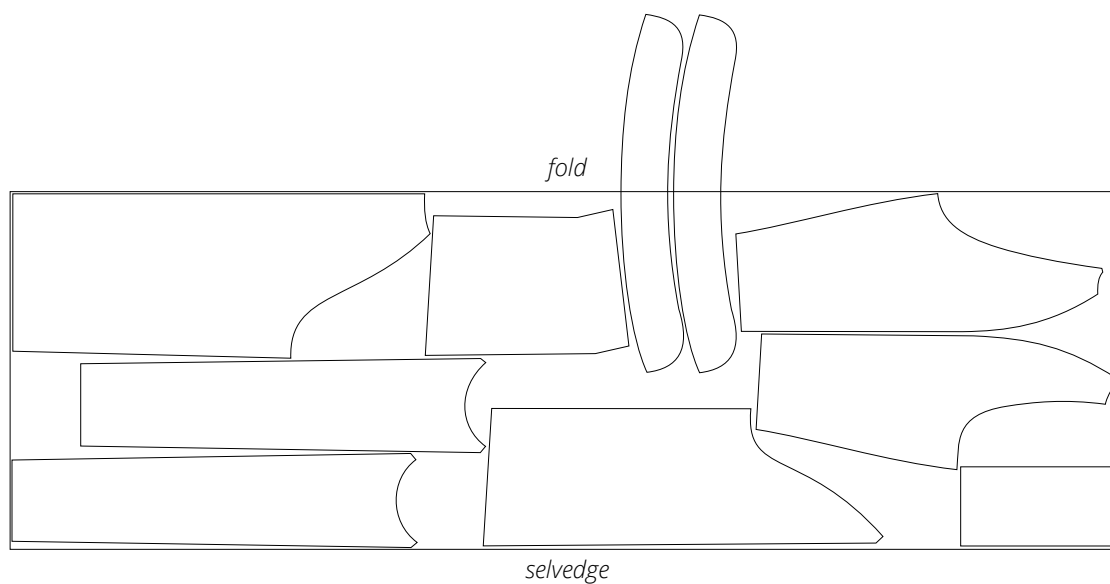
- garment hem allowance — 4 cm (1 5/8")
- all other edges — 1 cm (3/8")

Take this into account when laying out pattern pieces on the fabric.

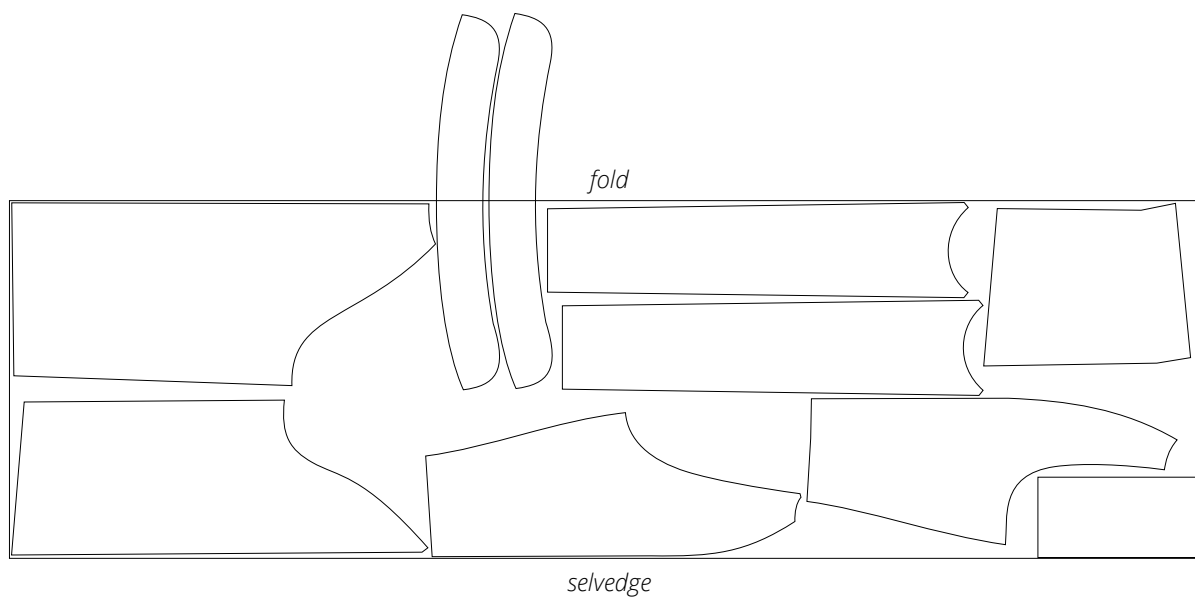
***IMPORTANT!** The side front piece features no seam allowance at the bottom.*

CUTTING LAYOUT

Main fabric, 140 cm (55") wide, with a directional print/nap,
cut on fold, for sizes XS–S in all heights

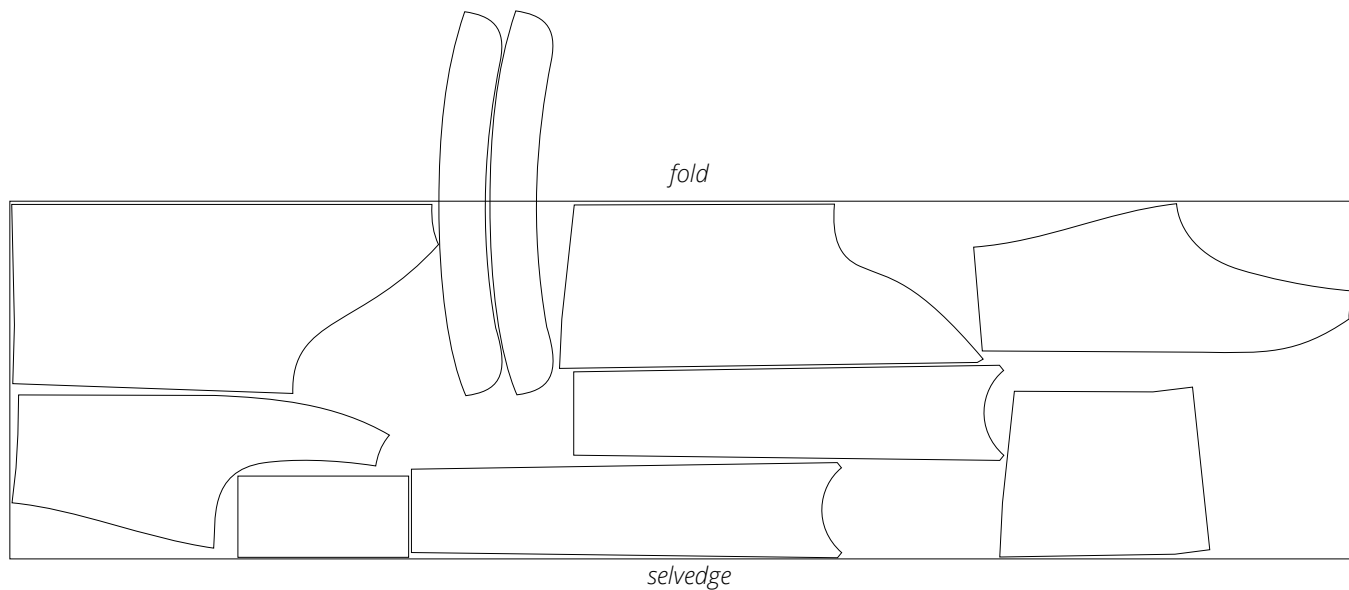


Main fabric, 140 cm (55") wide, with a directional print/nap,
cut on fold, for sizes M–L in all heights



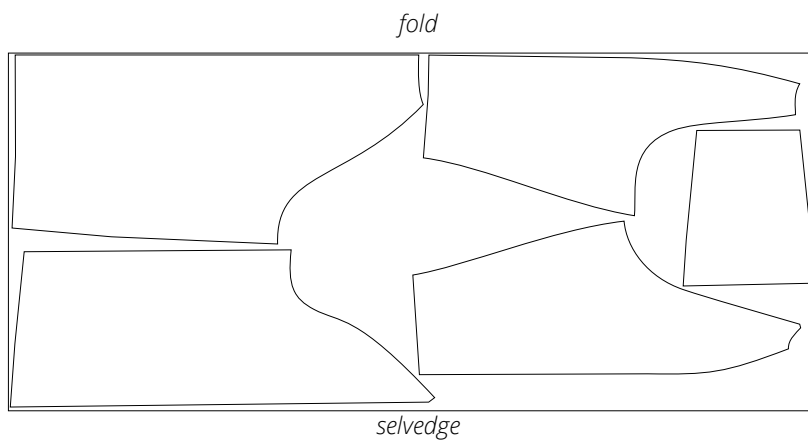
Important! The stand collar pieces are cut on a single layer out of the leftover fabric.

Main fabric, 140 cm (55") wide, with a directional print/nap,
cut on fold, for size XL in all heights

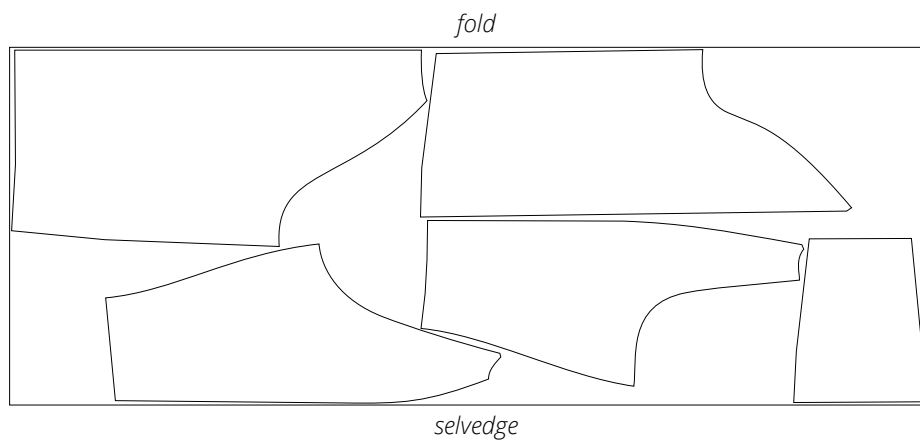


Important! The stand collar pieces are cut on a single layer out of the leftover fabric.

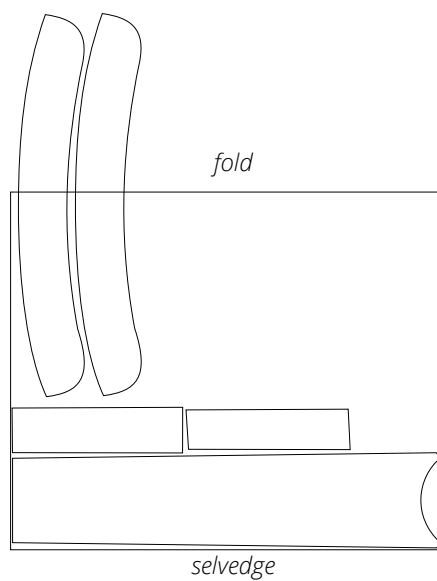
Lining fabric, 140 cm (55") wide, with a directional print,
cut on fold, for sizes XS-L in all heights



Lining fabric, 140 cm (55") wide, with a directional print,
cut on fold, for size XL in all heights



Interfacing, 140 cm (55") wide,
cut on fold, for all sizes in all heights



Important! The stand collar pieces are cut on a single layer out
of the leftover fabric.

READY? LET'S GET SEWING!



Place the patch pocket and pocket lining pieces right sides together. Align the top edges and secure with sewing clips.

Machine-stitch, backstitching at the beginning and end of the seam.

Press the seam allowances towards the pocket lining.

Important! Pieces cut from real leather/suede, faux leather/suede should be pressed using a pressing cloth and without steam.



Working on the right side, understitch the seam allowances to the pocket lining at 2 mm from the seam.



Remove the backing paper from the adhesive tape applied along the top foldline and the grown-on facing alignment line.