

# FROM THE FOUNDER OF THE #VIKISEWS BRAND

---



Back in 2016, when I was working on my first set of sewing instructions, I was trying to write them in such a way that even a complete beginner could easily understand and use them to create their very first garment. These instructions laid the foundation for the Vikisews brand, its vision and its mission. I wanted to create modern patterns with the utmost detailed and clear instructions.

Now, with each new collection we are constantly improving our instructions, amending them and adding more relevant details. By the time the final product reaches you, our drafters, correctors, and editors would have spent weeks perfecting every word and every photograph. If you compile a few of our instructions together, you will get a sewing manual that will assist you in sewing all kinds of garments at any difficulty level.

And I would be very happy if these instructions helped you to turn your hobby into a lifelong passion... Enjoy the process! Create your ultimate dream wardrobe! Wear your garments proudly for years to come!

If you have any questions, please contact us at [info@vikisews.com](mailto:info@vikisews.com) — we are always there to help.



## JESSELYN PATTERN DESCRIPTION

---

Jesselyn is a close-fitting dress with a waist seam below the natural waistline. The dress is made of two types of fabric. The close-fitting bodice is made of knit fabric and features a deep oval-shaped neckline. The set-in sleeves are long and close-fitting. The voluminous skirt is made of non-stretch fabric and gathered along the waist seam. Jesselyn is ankle-length.



## IMPORTANT!

---

The contents of this pattern are copyright protected and belong exclusively to Vikisews. You may use Vikisews patterns for personal use. It is prohibited to share Vikisews patterns and instructions with third parties, as well as to publish patterns and instructions online for public access. **Non-compliance with the mentioned rules is a violation of the US copyright law and may result in civil liability and criminal prosecution.**

You may use Vikisews patterns for commercial use, to sew custom-made garments and/or create fashion collections, on the condition that the patterns are solely used in a manufacturing setting and are not further shared with individuals.

# TOTAL EASE ALLOWANCE

	Bust ease	Waistline ease	Hipline ease	Upper arm ease
cm	-10.5 to -19.4	-5.4	68.9–90.4	-1.7
inches	-4 1/8 to -7 5/8	-2 1/8	27 1/8–35 5/8	-5/8

# GARMENT LENGTH, SLEEVE LENGTH

Height, cm	Center back length, cm	Sleeve length, cm
1 (154–160)	125.2–127.1	61.2–63
2 (162–168)	129.2–131.1	63.2–65
3 (170–176)	133.2–135.1	65.3–67
4 (178–184)	137.2–139.1	67.2–69

Height, ft	Center back length, in	Sleeve length, in
1 (5'1"–5'3")	49 1/4–50	24 1/8–24 3/4
2 (5'4"–5'6")	50 7/8–51 5/8	24 7/8–25 5/8
3 (5'7"–5'9")	52 1/2–53 1/4	25 3/4–26 3/8
4 (5'10"–6'1")	54–54 3/4	26 1/2–27 1/8

# SUGGESTED FABRIC

To sew this dress, choose medium-weight, pliable, soft, low-stretch or high-stretch dress-weight fabrics made of natural fibers, artificial fibers, blends, or synthetics.

The following fabrics are recommended for the bodice: jersey fabrics, knits, stretch velvet, stretch crepe. The stretch factor should be 1.5–1.8.

You can determine the stretch factor of the fabric yourself. Mark 10 cm (4") along the crosswise grain of the fabric, lay a ruler next to the marked section, and stretch the fabric. Divide the measurement you get by 10.

**Attention!** We do not recommend non-stretch fabrics (suiting) or lightweight sheer fabrics (chiffon, organza, stretch lace).

The following fabrics are recommended for the skirt: shirting, modal, crepe de chine, viscose, cotton.

**Attention!** We do not recommend stretchy knit fabrics or lightweight sheer fabrics (chiffon, organza, stretch lace).

The dress in the photo is made of two types of fabric.

The bodice is made of jersey fabric. The fabric is medium weight, pliable, soft, and stretchy. The fiber content is 60% viscose, 31% nylon, and 9% elastane. The fabric weight is 230 g/m<sup>2</sup>.

The skirt is made of shirting. The fabric is medium weight, pliable, soft, and non-stretch. The fiber content is 66% polyester, 30% bamboo, and 4% elastane. The fabric weight is 150 g/m<sup>2</sup>.

## FABRIC AND NOTIONS REQUIREMENTS

1. Main fabric (jersey fabric), 140 cm wide, with a directional print/nap, in meters:

Height, cm	Size				
	34–38	40	42	44	46–52
1 (154–160)	0.65	0.75	1	1.15	1.2
2 (162–168)	0.7	0.75	1	1.2	1.25
3 (170–176)	0.7	0.8	1.05	1.25	1.25
4 (178–184)	0.75	0.8	1.05	1.25	1.3

Main fabric (jersey fabric), 55" wide, with a directional print/nap, in yards:

Height, ft	Size				
	34–38	40	42	44	46–52
1 (5'1"–5'3")	3/4	7/8	1 1/8	1 1/4	1 1/4
2 (5'4"–5'6")	3/4	7/8	1 1/8	1 1/4	1 3/8
3 (5'7"–5'9")	3/4	7/8	1 1/8	1 3/8	1 3/8
4 (5'10"–6'1")	7/8	7/8	1 1/8	1 3/8	1 3/8

2. Additional fabric (shirting), 140 cm wide, with a directional print/nap, in meters:

Height, cm	Size									
	34	36	38	40	42	44	46	48	50	52
1 (154–160)	3.5	3.6	3.65	3.7	3.8	3.85	3.9	3.95	4.1	4.1
2 (162–168)	3.65	3.75	3.8	3.85	3.95	4	4.05	4.1	4.15	4.25
3 (170–176)	3.85	3.9	3.95	4	4.05	4.15	4.2	4.25	4.3	4.35
4 (178–184)	4	4.05	4.1	4.15	4.2	4.25	4.35	4.4	4.45	4.5

Additional fabric (shirting), 55" wide, with a directional print/nap, in yards:

Height, ft	Size									
	34	36	38	40	42	44	46	48	50	52
1 (5'1"–5'3")	3 7/8	3 7/8	4	4	4 1/8	4 1/4	4 1/4	4 3/8	4 1/2	4 1/2
2 (5'4"–5'6")	4	4 1/8	4 1/8	4 1/4	4 3/8	4 3/8	4 3/8	4 1/2	4 1/2	4 5/8
3 (5'7"–5'9")	4 1/4	4 1/4	4 3/8	4 3/8	4 3/8	4 1/2	4 5/8	4 5/8	4 3/4	4 3/4
4 (5'10"–6'1")	4 3/8	4 3/8	4 1/2	4 1/2	4 5/8	4 5/8	4 3/4	4 3/4	4 7/8	4 7/8

**IMPORTANT!** When purchasing fabric, please account for shrinkage and buy 5% more than required.

3. Elastic, 1 cm (3/8") wide, for all heights, depending on the size (the exact elastic length is specified in the pattern):

Size	34	36	38	40	42	44	46	48	50	52
cm	71.8	75.3	78.7	82.2	85.7	89.1	92.6	96.1	99.5	103
inches	28 1/4	29 5/6	31	32 3/8	33 3/4	35 1/8	36 1/2	37 7/8	39 1/8	40 1/2

4. Matching thread — 5 spools (1 spool for the sewing machine + 4 spools for the overlocker)

# TOOLS AND EQUIPMENT

---

- sewing machine for construction
- overlocker for construction and finishing raw edges. This may be replaced with a stretch overlock stitch or a zigzag stitch on the sewing machine (overlock or zigzag stitch width 2–3 mm, stitch length 2.5 mm)
- coverstitch or coverlock machine for finishing the neckline and sleeve hems. If you don't have a coverstitch machine, it can be replaced with a twin needle on any regular sewing machine that can do a zigzag stitch

## PATTERN PIECES LIST

---

### 1. From main fabric:

- front bodice — cut 1 on fold
- back bodice — cut 1 on fold
- sleeve — cut 2
- front neck binding — cut 1
- back neck binding — cut 1

**IMPORTANT!** Don't forget to transfer all pattern markings and notches onto the fabric.

### 2. From additional fabric:

- front skirt — cut 1 on fold
- back skirt — cut 1 on fold

## SEAM ALLOWANCES

---

All pattern pieces include seam allowances as follows:

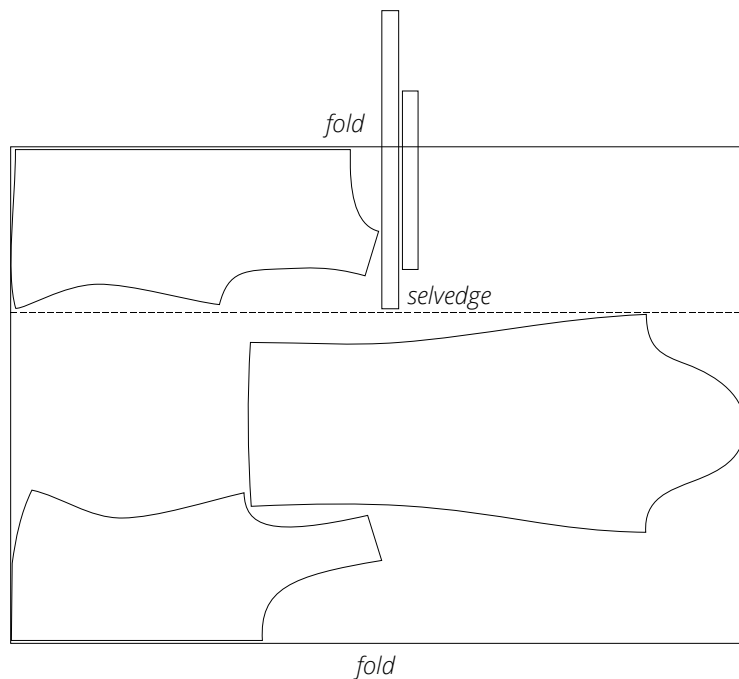
- sleeve hem allowance — 2 cm (3/4")
- all other edges — 1 cm (3/8")

Take this into account when laying out the pattern pieces on the fabric.

# CUTTING LAYOUT

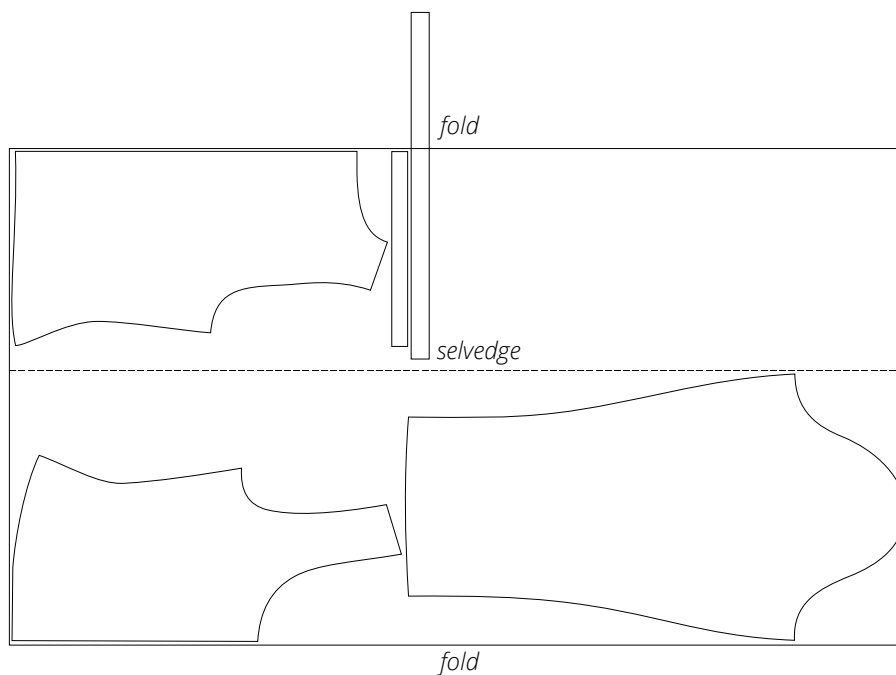
---

Main fabric, 140 cm (55") wide, with a directional print/nap, cut with two folds, for sizes 34–42 in all heights



**Attention!** The back neck binding and front neck binding pieces are each cut once on a single layer from the leftover fabric.

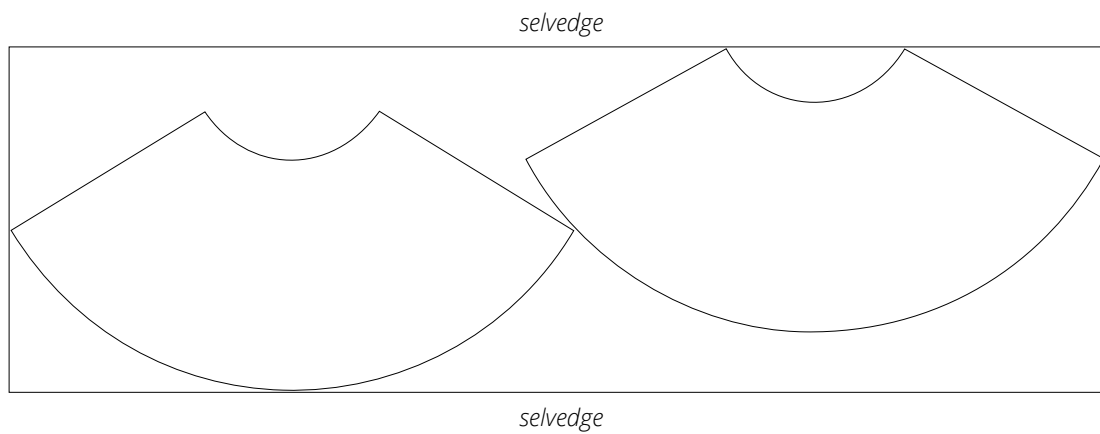
Main fabric, 140 cm (55") wide, with a directional print/nap, cut with two folds, for sizes 44–52 in all heights



**Attention!** The back neck binding piece is cut once. The front neck binding piece is cut once on a single layer out of the leftover fabric.



Additional fabric, 140 cm (55") wide, with a directional print/nap,  
cut on a single layer, for all sizes in all heights



**READY? LET'S GET SEWING!**

---



Press the seam flat. Press the seam allowances towards the neck binding.



Fold the neck binding to the wrong side, rolling the seam towards the garment by 1–2 mm, and hand-baste it in place. Press the binding.



Insert the sleeve into the armhole, right sides together. Align the sleeve cap and armhole edges, match the notches and seams, and pin. Hand-baste the sleeve in place.