

# FROM THE FOUNDER OF THE #VIKISEWS BRAND

---

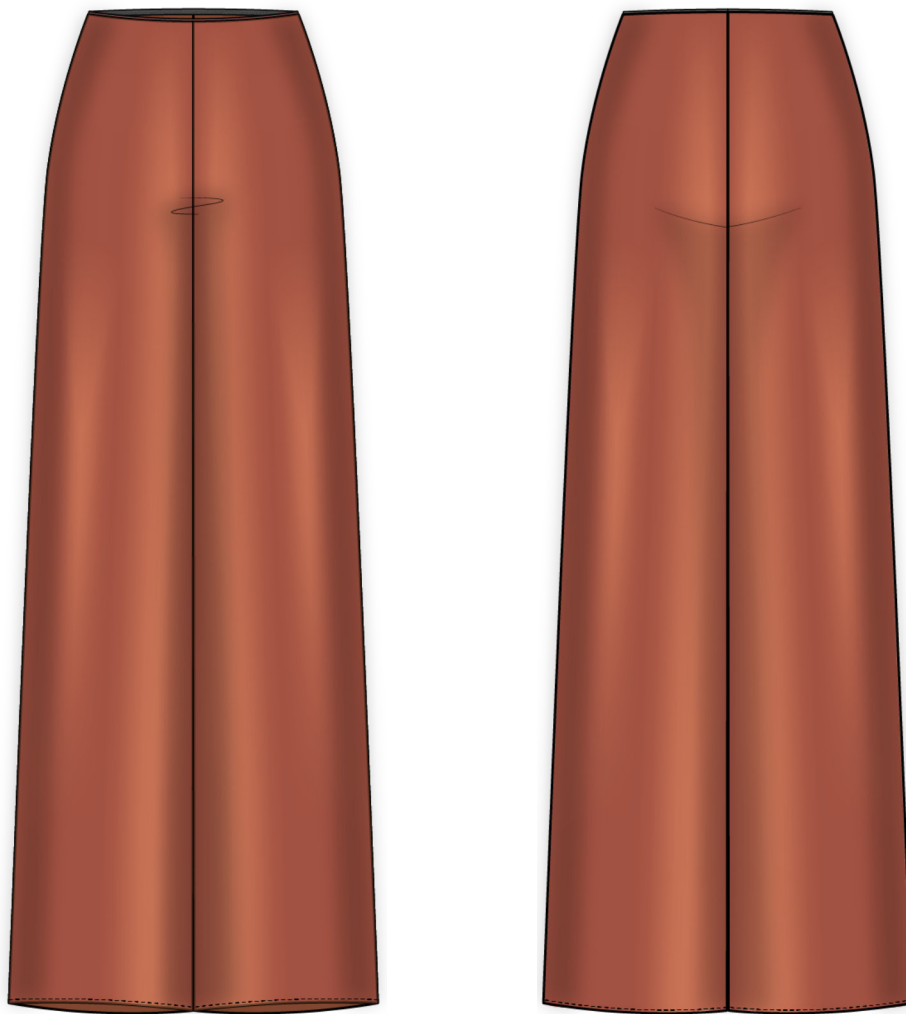


Back in 2016, when I was working on my first set of sewing instructions, I was trying to write them in such a way that even a complete beginner could easily understand and use them to create their very first garment. These instructions laid the foundation for the Vikisews brand, its vision and its mission. I wanted to create modern patterns with the utmost detailed and clear instructions.

Now, with each new collection we are constantly improving our instructions, amending them and adding more relevant details. By the time the final product reaches you, our drafters, correctors, and editors would have spent weeks perfecting every word and every photograph. If you compile a few of our instructions together, you will get a sewing manual that will assist you in sewing all kinds of garments at any difficulty level.

And I would be very happy if these instructions helped you to turn your hobby into a lifelong passion... Enjoy the process! Create your ultimate dream wardrobe! Wear your garments proudly for years to come!

If you have any questions, please contact us at [info@vikisews.com](mailto:info@vikisews.com) — we are always there to help.



## TILDA PATTERN DESCRIPTION

---

Tilda is a pair of bias-cut pants with a straight silhouette. The top edge is finished with narrow elastic. Tilda is below-ankle length.



## IMPORTANT!

---

The contents of this pattern are copyright protected and belong exclusively to Vikisews. You may use Vikisews patterns for personal use. It is prohibited to share Vikisews patterns and instructions with third parties, as well as to publish patterns and instructions online for public access. **Non-compliance with the mentioned rules is a violation of the US copyright law and may result in civil liability and criminal prosecution.**

You may use Vikisews patterns for commercial use, to sew custom-made garments and/or create fashion collections, on the condition that the patterns are solely used in a manufacturing setting and are not further shared with individuals.

## TOTAL EASE ALLOWANCE

	Waistline ease	Hipline ease
cm	7	6.3
inches	2 3/4	2 1/2

## GARMENT LENGTH, FINISHED HEM WIDTH

Height, cm	Side seam length, cm	Finished hem width, cm
1 (154–160)	103.6–106.8	33.2–40.4
2 (162–168)	107.9–111.1	33.2–40.4
3 (170–176)	112.1–115.4	33.2–40.4
4 (178–184)	116.4–119.7	33.2–40.4

Height, ft	Side seam length, in	Finished hem width, in
1 (5'1"–5'3")	40 3/4–42	13 1/8–15 7/8
2 (5'4"–5'6")	42 1/2–43 3/4	13 1/8–15 7/8
3 (5'7"–5'9")	44 1/8–45 3/8	13 1/8–15 7/8
4 (5'10"–6'1")	45 7/8–47 1/8	13 1/8–15 7/8

## SUGGESTED FABRIC

To sew these pants, choose medium-weight, pliable, soft, non-stretch or low-stretch, and opaque dress-weight fabrics made of natural fibers, artificial fibers, blends, or synthetics.

The following fabrics are recommended: satin, viscose, crepe de chine, sateen, natural silk, artificial silk.

The pants in the photo are made of satin. The fabric is medium weight, pliable, soft, and low-stretch. The fiber content is 100% polyester. The fabric weight is 140 g/m<sup>2</sup>.

# FABRIC AND NOTIONS REQUIREMENTS

1. Main fabric, 140 cm wide, with a directional print/nap, in meters:

Height, cm	Size									
	34	36	38	40	42	44	46	48	50	52
1 (154–160)	1.9	1.95	2.05	2.1	2.15	2.2	2.25	2.3	2.4	2.45
2 (162–168)	2.05	2.1	2.15	2.2	2.25	2.35	2.4	2.45	2.5	2.55
3 (170–176)	2.15	2.2	2.3	2.35	2.4	2.45	2.5	2.55	2.6	2.65
4 (178–184)	2.3	2.35	2.4	2.45	2.5	2.6	2.65	2.7	2.75	2.8

Main fabric, 55" wide, with a directional print/nap, in yards:

Height, ft	Size									
	34	36	38	40	42	44	46	48	50	52
1 (5'1"–5'3")	2 1/8	2 1/8	2 1/4	2 1/4	2 3/8	2 3/8	2 1/2	2 1/2	2 5/8	2 5/8
2 (5'4"–5'6")	2 1/4	2 1/4	2 3/8	2 3/8	2 1/2	2 5/8	2 5/8	2 5/8	2 3/4	2 3/4
3 (5'7"–5'9")	2 3/8	2 3/8	2 1/2	2 5/8	2 5/8	2 5/8	2 3/4	2 3/4	2 7/8	2 7/8
4 (5'10"–6'1")	2 1/2	2 5/8	2 5/8	2 5/8	2 3/4	2 7/8	2 7/8	3	3	3

**IMPORTANT!** When purchasing fabric, please account for shrinkage and buy 5% more than required.

2. Elastic, 1–1.5 cm (3/8–5/8") wide, for all heights (the exact elastic length is specified in the pattern):

Size	34	36	38	40	42	44	46	48	50	52
cm	56	60	63.2	66.8	70.4	74	77.6	81.2	85	88.5
inches	22	23 5/8	24 7/8	26 1/4	27 3/4	29 1/8	30 1/2	32	33 1/2	34 7/8

3. Matching thread — 5 spools (1 spool for the sewing machine + 4 spools for the overlocker)

## TOOLS AND EQUIPMENT

---

- sewing machine for construction
- overlocker for finishing raw edges. This may be replaced with a stretch overlock stitch or a zigzag stitch on the sewing machine (overlock or zigzag stitch width 2–3 mm, stitch length 2.5 mm)

## PATTERN PIECES LIST

---

From main fabric:

- front leg — cut 2
- back leg — cut 2

***IMPORTANT!** Don't forget to transfer all pattern markings and notches onto the fabric.*

## SEAM ALLOWANCES

---

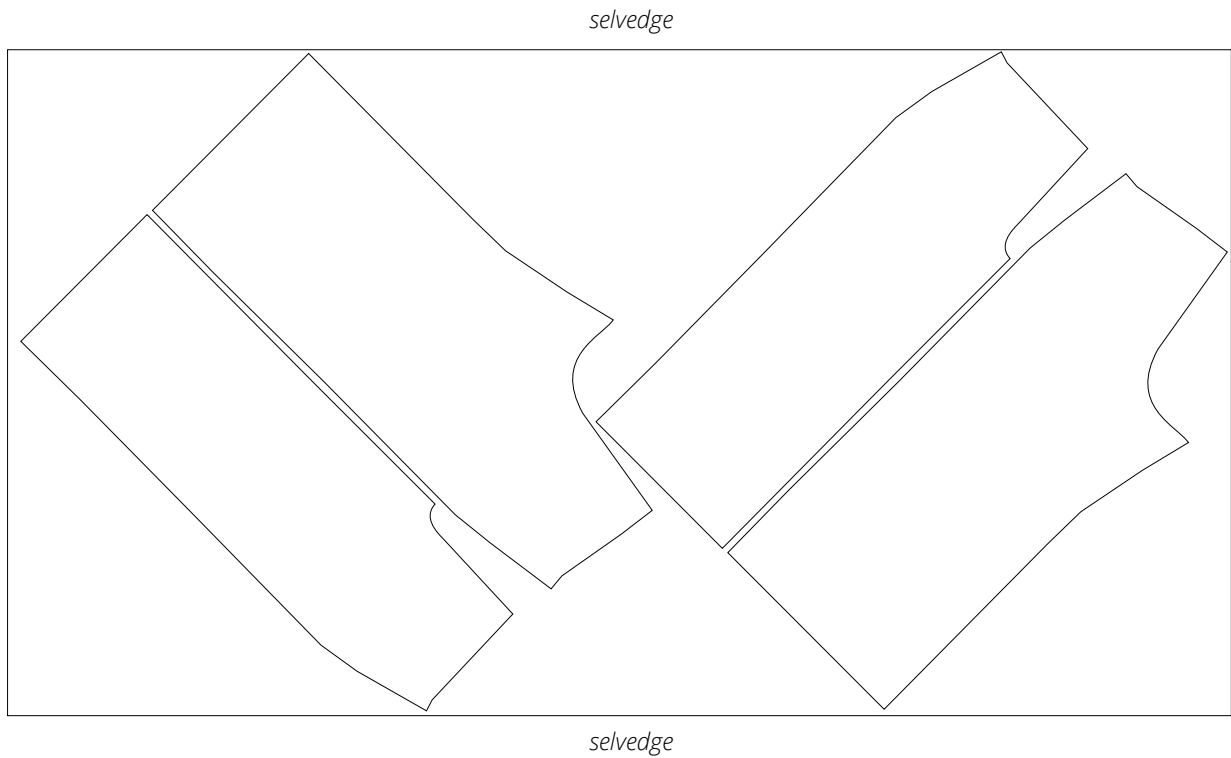
All pattern pieces include 1 cm (3/8") seam allowances.

Take this into account when laying out the pattern pieces on the fabric.

# CUTTING LAYOUT

---

Main fabric, 140 cm (55") wide, with a directional print/nap,  
cut on a single layer, for all sizes in all heights



**READY? LET'S GET SEWING!**

---



Turn one leg right side out and keep the other leg wrong side out.

Insert one leg into the other, right sides together. Align the crotch edges, match the notches and inseams, and pin.

**Important!** The edges might have stretched out due to the bias cut, so we recommend pinning them on a dress form instead of a table for accuracy.



Machine-stitch twice, with the second stitching line going exactly over the first one. Backstitch at the beginning and end of each seam.

Overlock the seam allowances, starting at the back leg piece.

Press the seam flat.



Measure the crotch seam lengths on the front and back leg pattern pieces.