

FROM THE FOUNDER OF THE #VIKISEWS BRAND



Back in 2016, when I was working on my first set of sewing instructions, I was trying to write them in such a way that even a complete beginner could easily understand and use them to create their very first garment. These instructions laid the foundation for the Vikisews brand, its vision and its mission. I wanted to create modern patterns with the utmost detailed and clear instructions.

Now, with each new collection we are constantly improving our instructions, amending them and adding more relevant details. By the time the final product reaches you, our drafters, correctors, and editors would have spent weeks perfecting every word and every photograph. If you compile a few of our instructions together, you will get a sewing manual that will assist you in sewing all kinds of garments at any difficulty level.

And I would be very happy if these instructions helped you to turn your hobby into a lifelong passion... Enjoy the process! Create your ultimate dream wardrobe! Wear your garments proudly for years to come!

If you have any questions, please contact us at info@vikisews.com — we are always there to help.



UNELLA PATTERN DESCRIPTION

Unella is a close-fitting dress with a grown-on stand collar and an asymmetric hem. The front features a princess seam starting at the pleated right shoulder and a design line at the hip level. The left side has no side seam but has a dart with a gathered detail incorporated into it. The long set-in sleeves are elevated with a slit at the bottom. The dress closes with an invisible zipper in the left shoulder seam. Unella is below-the-knee length.



IMPORTANT!

The contents of this pattern are copyright protected and belong exclusively to Vikisews. You may use Vikisews patterns for personal use. It is prohibited to share Vikisews patterns and instructions with third parties, as well as to publish patterns and instructions online for public access. **Non-compliance with the mentioned rules is a violation of the US copyright law and may result in civil liability and criminal prosecution.**

You may use Vikisews patterns for commercial use, to sew custom-made garments and/or create fashion collections, on the condition that the patterns are solely used in a manufacturing setting and are not further shared with individuals.

TOTAL EASE ALLOWANCE

	Bust ease (estimated)	Waistline ease (estimated)	Hipline ease (estimated)	Upper arm ease
cm	from -3.9 to -2.7	from 2.3 to 4.7	from -0.7 to 3.7	from -2.7 to -0.8
inches	from -1 1/2 to -1 1/8	from 7/8 to 1 7/8	from -1/4 to 1 1/2	from -1 1/8 to -3/8

GARMENT LENGTH, SLEEVE LENGTH

Height, cm	Garment length, cm	Sleeve length, cm
1 (154–160)	121.9–126.1	62.6–62.8
2 (162–168)	125.8–130	64.5–64.7
3 (170–176)	129.9–134.1	66.4–66.6
4 (178–184)	134–138.2	68.3–68.5

Height, ft	Garment length, in	Sleeve length, in
1 (5'1"–5'3")	48–49 5/8	24 5/8–24 3/4
2 (5'4"–5'6")	49 1/2–51 1/8	25 3/8–25 1/2
3 (5'7"–5'9")	51 1/8–52 3/4	26 1/8–26 1/4
4 (5'10"–6'1")	52 3/4–54 3/8	26 7/8–27

SUGGESTED FABRIC

To sew this dress, choose medium-weight, pliable, soft, stretchy knit fabrics (with a stretch factor of 1.3–1.5), made of natural, artificial, blended, or synthetic fibers.

The following fabrics are recommended: knits, rib knits, and lightweight sweater knits.

Attention! We recommend using only stretchy fabrics that recover well after stretching when sewing this dress.

You can determine the fabric's stretch factor yourself: mark a 10 cm (4") section across the width, stretch it, and divide the stretched length by 10 to get the stretch factor.

The dress in the photo is made of lightweight sweater knit. The fabric is medium weight, pliable, and stretchy. The fiber content is 55% acetate + 45% polyester. The fabric weight is 285 g/m². Stretch factor: 1.5.

FABRIC AND NOTIONS REQUIREMENTS

1. Main fabric, 140 cm wide, with a directional print/nap, in meters

Height, cm	Size								
	34	36	38-40	42	44	46	48	50	52
1 (154-160)	1.65	1.75	1.95	2.05	2.15	2.2	2.4	2.5	2.6
2 (162-168)	1.7	1.8	2	2.1	2.15	2.3	2.45	2.55	2.65
3 (170-176)	1.75	1.9	2.05	2.15	2.2	2.35	2.5	2.65	2.75
4 (178-184)	1.8	1.95	2.15	2.25	2.25	2.4	2.55	2.65	2.75

Main fabric, 55" wide, with a directional print/nap, in yards

Height, ft	Size								
	34	36	38-40	42	44	46	48	50	52
1 (5'1"-5'3")	1 $\frac{3}{4}$	1 $\frac{7}{8}$	2 $\frac{1}{8}$	2 $\frac{1}{4}$	2 $\frac{3}{8}$	2 $\frac{3}{8}$	2 $\frac{5}{8}$	2 $\frac{3}{4}$	2 $\frac{7}{8}$
2 (5'4"-5'6")	1 $\frac{7}{8}$	2	2 $\frac{1}{8}$	2 $\frac{1}{4}$	2 $\frac{3}{8}$	2 $\frac{1}{2}$	2 $\frac{5}{8}$	2 $\frac{3}{4}$	2 $\frac{7}{8}$
3 (5'7"-5'9")	1 $\frac{7}{8}$	2 $\frac{1}{8}$	2 $\frac{1}{4}$	2 $\frac{3}{8}$	2 $\frac{3}{8}$	2 $\frac{5}{8}$	2 $\frac{3}{4}$	2 $\frac{7}{8}$	3
4 (5'10"-6'1")	2	2 $\frac{1}{8}$	2 $\frac{3}{8}$	2 $\frac{1}{2}$	2 $\frac{1}{2}$	2 $\frac{5}{8}$	2 $\frac{3}{4}$	2 $\frac{7}{8}$	3

IMPORTANT! When purchasing fabric, please account for shrinkage and buy 5% more than required.

2. Stitched bias-cut fusible stay tape with stitch reinforcement, 1-1.5 cm (3/8-5/8") wide — 25 cm (10")
3. One invisible zipper, 15 cm (6") long, for all sizes and heights
4. Matching thread — 5 spools (1 spool for the sewing machine + 4 spools for the overlocker / 3 spools for the coverstitch machine)

TOOLS AND EQUIPMENT

- sewing machine for construction
- overlocker for construction and finishing raw edges. This may be replaced with a stretch overlock stitch or a zigzag stitch on the sewing machine (overlock or zigzag stitch width 2–3 mm, stitch length 2.5 mm)
- coverstitch or coverlock machine for finishing the garment hem. If you don't have a coverstitch machine, it can be replaced with a twin needle on any regular sewing machine that can do a zigzag stitch
- invisible zipper foot for the sewing machine
- one-sided foot for the sewing machine

IMPORTANT! We recommend using specialty needles when working with knit fabrics (for example, *STRETCH*, *SUPER STRETCH*, *JERSEY*, etc.). These are ballpoint needles, so they part the threads of the fabric you are stitching without piercing them.

PATTERN PIECES LIST

From main fabric:

- top right front— cut 1
- top left front — cut 1
- bottom right front — cut 1
- back — cut 1
- sleeve — cut 2
- bar — cut 1

IMPORTANT! The pattern pieces that have the "face" inscription on them should be placed with the blank side onto the right side of fabric when cutting.

IMPORTANT! Don't forget to transfer all pattern markings and notches onto the fabric.

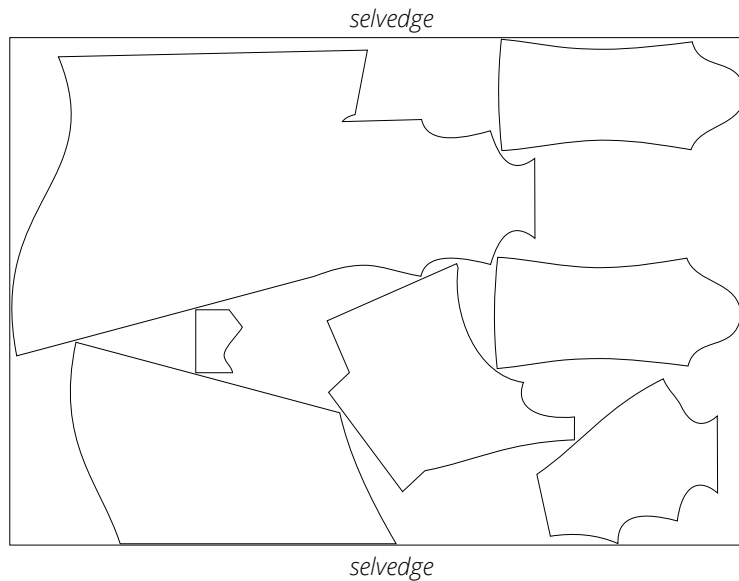
SEAM ALLOWANCES

All pattern pieces include seam allowances as follows:

- sleeve hem allowance — 1.5 cm (5/8")
- sleeve slit edges — 1.5 cm (5/8")
- all other edges — 1 cm (3/8")

CUTTING LAYOUT

Main fabric, 140 cm (55") wide, with a directional print/nap, cut on a single layer, for sizes 34-42 in all heights



Main fabric, 140 cm (55") wide, with a directional print/nap, cut on a single layer, for sizes 44-52 in all heights



READY? LET'S GET SEWING!



Pull the bobbin threads to gather the edge on the top right front. Distribute the gathers evenly. Gather to the length indicated on the pattern.



Press the seam allowance in the gathered area without flattening the second gathering row.



Fold the gathered section of the top right front right sides together, align the edges, and pin.



Machine-stitch, backstitching at the beginning and end. Stop stitching where the seam allowances intersect. Press the seam.