

FROM THE FOUNDER OF THE #VIKISEWS BRAND

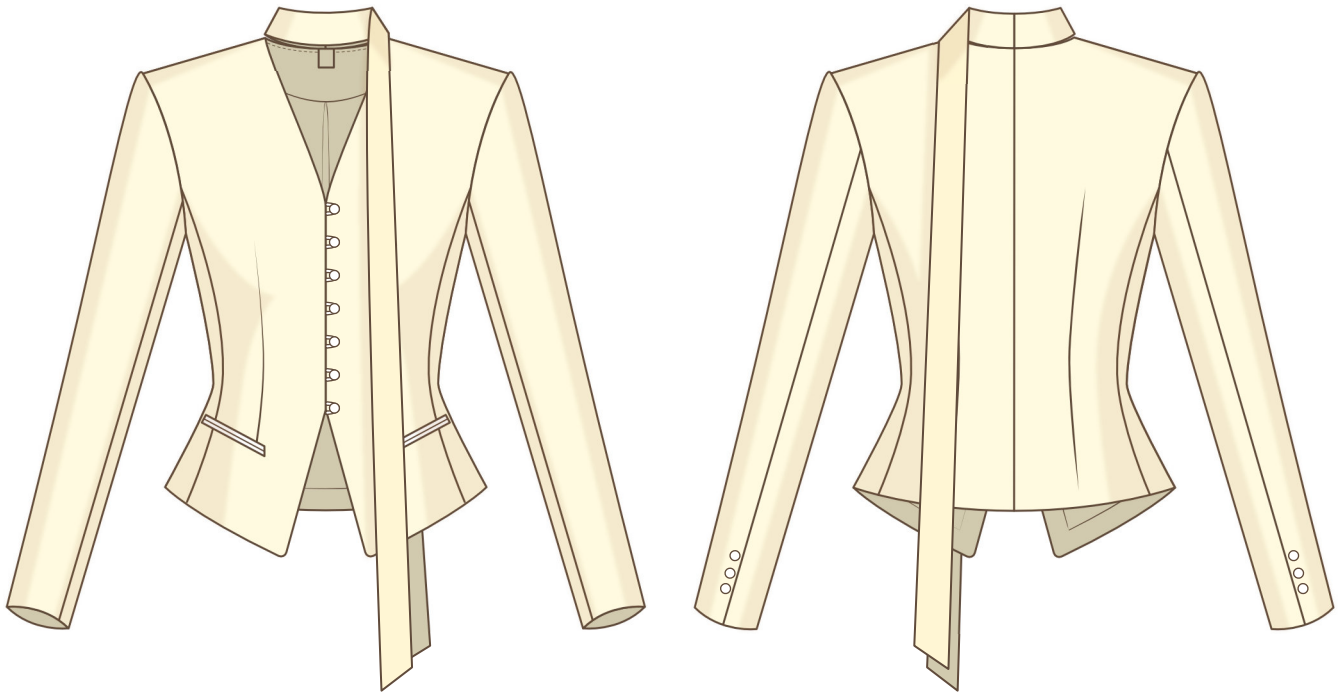


Back in 2016, when I was working on my first set of sewing instructions, I was trying to write them in such a way that even a complete beginner could easily understand and use them to create their very first garment. These instructions laid the foundation for the Vikisews brand, its vision and its mission. I wanted to create modern patterns with the utmost detailed and clear instructions.

Now, with each new collection we are constantly improving our instructions, amending them and adding more relevant details. By the time the final product reaches you, our drafters, correctors, and editors would have spent weeks perfecting every word and every photograph. If you compile a few of our instructions together, you will get a sewing manual that will assist you in sewing all kinds of garments at any difficulty level.

And I would be very happy if these instructions helped you to turn your hobby into a lifelong passion... Enjoy the process! Create your ultimate dream wardrobe! Wear your garments proudly for years to come!

If you have any questions, please contact us at info@vikisews.com — we are always there to help.



MINERVA PATTERN DESCRIPTION

Minerva is a semi-fitted lined blazer with an accentuated waist. The back is shaped with a center seam, waist darts, and princess seams. The front is shaped with waist darts and princess seams. There are double-welt pockets on the front. The long set-in sleeves are made up of two pieces and have faux button vents in the elbow seams. The detachable tie stand collar is attached with a snap. The blazer has a center front button and button loop closure. Minerva is above-hip length.



IMPORTANT!

The contents of this pattern are copyright protected and belong exclusively to Vikisews. You may use Vikisews patterns for personal use. It is prohibited to share Vikisews patterns and instructions with third parties, as well as to publish patterns and instructions online for public access. **Non-compliance with the mentioned rules is a violation of the US copyright law and may result in civil liability and criminal prosecution.**

You may use Vikisews patterns for commercial use, to sew custom-made garments and/or create fashion collections, on the condition that the patterns are solely used in a manufacturing setting and are not further shared with individuals.

TOTAL EASE ALLOWANCE

	Bust ease	Waistline ease	Hipline ease	Upper arm ease
cm	4.6–7.7	7.2–8.5	12.1–13.5	5.9–3.4
inches	1 $\frac{3}{4}$ –3	2 $\frac{7}{8}$ –3 $\frac{3}{8}$	4 $\frac{3}{4}$ –5 $\frac{3}{8}$	2 $\frac{3}{8}$ –1 $\frac{3}{8}$

GARMENT LENGTH, SLEEVE LENGTH

Height, cm	Center back length, cm	Sleeve length, cm
1 (154–160)	49.9–51.8	59.2–60.9
2 (162–168)	52.9–54.8	61.2–62.9
3 (170–176)	55.9–57.8	63.3–65
4 (178–184)	58.9–60.8	65.2–66.9

Height, ft	Center back length, in	Sleeve length, in
1 (5'1"–5'3")	19 $\frac{5}{8}$ –20 $\frac{3}{8}$	23 $\frac{1}{4}$ –24
2 (5'4"–5'6")	20 $\frac{7}{8}$ –21 $\frac{5}{8}$	24 $\frac{1}{8}$ –24 $\frac{3}{4}$
3 (5'7"–5'9")	22–22 $\frac{3}{4}$	24 $\frac{7}{8}$ –25 $\frac{5}{8}$
4 (5'10"–6'1")	23 $\frac{1}{4}$ –23 $\frac{7}{8}$	25 $\frac{5}{8}$ –26 $\frac{3}{8}$

SUGGESTED FABRIC

To sew this blazer, choose suiting fabrics with the following properties: medium weight, structured, non-stretch or low-stretch, and opaque.

The fiber content can include natural fibers (wool, cotton), artificial fibers (viscose), blends (wool + silk, wool + polyester, cotton + viscose, etc.), and synthetics (polyester, polyester + elastane).

The following fabrics are recommended: suiting fabrics, gabardine.

Attention! We do not recommend stretchy knit fabrics, soft or lightweight fabrics, or loosely woven materials.

For the lining, use lining fabrics made of artificial fibers (viscose), blends (viscose + elastane, viscose + polyester), or synthetics (polyester, polyester + elastane).

The blazer in the photo is made of suiting fabric. The fabric is soft, dense, and non-stretch. The fiber content is 75% polyester, 19% viscose, and 6% elastane. The fabric weight is 330 g/m². The lining is 55% viscose and 45% polyester. The fabric weight is 90 g/m².

FABRIC AND NOTIONS REQUIREMENTS

1. Main fabric, 140 cm wide, with a directional print/nap, in meters:

Height, cm	Size				
	34-38	40-44	46	48	50-52
1 (154-160)	1.45	1.65	1.7	1.8	1.85
2 (162-168)	1.5	1.75	1.8	1.9	1.95
3 (170-176)	1.55	1.8	1.9	1.9	2
4 (178-184)	1.6	1.9	2	2	2.1

Main fabric, 55" wide, with a directional print/nap, in yards:

Height, ft	Size				
	34-38	40-44	46	48	50-52
1 (5'1"-5'3")	1 5⁄8	1 3⁄4	1 7⁄8	2	2
2 (5'4"-5'6")	1 5⁄8	1 7⁄8	2	2	2 1⁄8
3 (5'7"-5'9")	1 3⁄4	2	2 1⁄8	2 1⁄8	2 1⁄8
4 (5'10"-6'1")	1 3⁄4	2 1⁄8	2 1⁄8	2 1⁄8	2 1⁄4

2. Lining fabric, 140 cm wide, with a directional print/nap, in meters:

Height, cm	Size					
	34	36	38-40	42	44-50	52
1 (154-160)	1.05	1.05	1.1	1.15	1.2	1.2
2 (162-168)	1.1	1.1	1.15	1.2	1.25	1.25
3 (170-176)	1.15	1.15	1.2	1.25	1.3	1.35
4 (178-184)	1.2	1.25	1.25	1.3	1.35	1.35

Lining fabric, 55" wide, with a directional print/nap, in yards:

Height, ft	Size					
	34	36	38-40	42	44-50	52
1 (5'1"-5'3")	1 $\frac{1}{8}$	1 $\frac{1}{8}$	1 $\frac{1}{4}$	1 $\frac{1}{4}$	1 $\frac{1}{4}$	1 $\frac{1}{4}$
2 (5'4"-5'6")	1 $\frac{1}{4}$	1 $\frac{1}{4}$	1 $\frac{1}{4}$	1 $\frac{1}{4}$	1 $\frac{3}{8}$	1 $\frac{3}{8}$
3 (5'7"-5'9")	1 $\frac{1}{4}$	1 $\frac{1}{4}$	1 $\frac{1}{4}$	1 $\frac{3}{8}$	1 $\frac{3}{8}$	1 $\frac{1}{2}$
4 (5'10"-6'1")	1 $\frac{1}{4}$	1 $\frac{3}{8}$	1 $\frac{3}{8}$	1 $\frac{3}{8}$	1 $\frac{1}{2}$	1 $\frac{1}{2}$

3. Lightweight knit or woven interfacing, 30-40 g/m², 140 cm wide, in meters:

Height, cm	Size			
	34-42	44-46	48	50-52
1 (154-160)	1.15	1.25	1.55	1.55
2 (162-168)	1.2	1.3	1.55	1.6
3 (170-176)	1.25	1.35	1.6	1.6
4 (178-184)	1.3	1.4	1.65	1.65

Lightweight knit or woven interfacing, 30-40 g/m², 55" wide, in yards:

Height, ft	Size			
	34-42	44-46	48	50-52
1 (5'1"-5'3")	1 $\frac{1}{4}$	1 $\frac{3}{8}$	1 $\frac{3}{4}$	1 $\frac{3}{4}$
2 (5'4"-5'6")	1 $\frac{1}{4}$	1 $\frac{3}{8}$	1 $\frac{3}{4}$	1 $\frac{3}{4}$
3 (5'7"-5'9")	1 $\frac{3}{8}$	1 $\frac{1}{2}$	1 $\frac{3}{4}$	1 $\frac{3}{4}$
4 (5'10"-6'1")	1 $\frac{3}{8}$	1 $\frac{1}{2}$	1 $\frac{3}{4}$	1 $\frac{3}{4}$

IMPORTANT! When purchasing fabric, please account for shrinkage and buy 5% more than required.

4. Stitched bias-cut fusible stay tape with stitch reinforcement, 1.5 cm (5/8") wide — 2.55–2.95 m (2 3/4–3 1/4 yd)
5. One pair of shoulder pads, 1.5 cm (5/8") thick
6. One pair of sleeve heads
7. Thirteen buttons, 1.2–1.5 cm (1/2–5/8") in diameter
8. One plastic sew-on snap, 1 cm (3/8") in diameter
9. Matching thread — 1 spool

TOOLS AND EQUIPMENT

- sewing machine for construction
- stitch-in-the-ditch foot for the sewing machine (optional)
- loop turner

PATTERN PIECES LIST

1. From main fabric:

- front — cut 2
- side front — cut 2
- back — cut 2
- side back — cut 2
- top sleeve — cut 2
- bottom sleeve — cut 2
- tie stand collar— cut 4
- collar tab— cut 1
- back neck facing — cut 1
- front facing — cut 2
- placket — cut 1
- rouleau strap for button loops— cut 1 (7 pcs.)
- pocket top welt — cut 2
- pocket bottom welt — cut 2
- pocket top lining — cut 2

2. From lining fabric:

- front lining — cut 2
- back lining — cut 2
- top sleeve lining — cut 2
- bottom sleeve lining — cut 2
- pocket bottom lining — cut 2

IMPORTANT! Don't forget to transfer all pattern markings and notches onto the fabric.

3. From interfacing:

- front — cut 2
- side front — cut 2
- back — cut 2
- side back — cut 2
- top sleeve (partially) — cut 2
- bottom sleeve (partially) — cut 2
- tie stand collar — cut 4
- collar tab— cut 1
- back neck facing — cut 1
- front facing — cut 2
- placket (half width) — cut 1
- pocket top welt — cut 2
- pocket bottom welt — cut 2

Additionally, cut the following pieces from interfacing:

Two strips, 3 cm (1 1/8") wide (length according to the pattern), to interface the pocket opening areas on the front and side front pieces. The interfacing strips should be cut on the straight grain (parallel to the selvedge).

SEAM ALLOWANCES

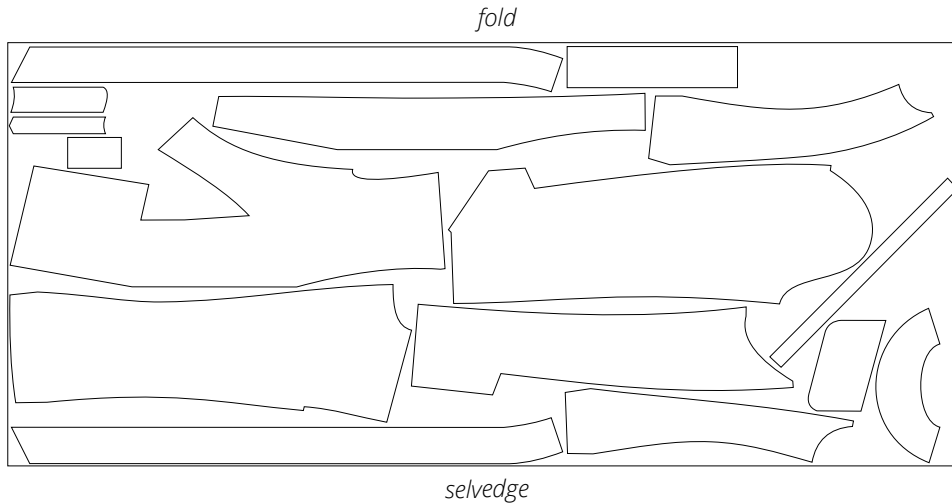
All pattern pieces include seam allowances as follows:

- garment hem allowance — 4 cm (1 5/8")
- sleeve hem allowance — 4 cm (1 5/8")
- pocket lining curved edges — 1.5 cm (5/8")
- all other edges — 1 cm (3/8")

Take this into account when laying out the pattern pieces on the fabric.

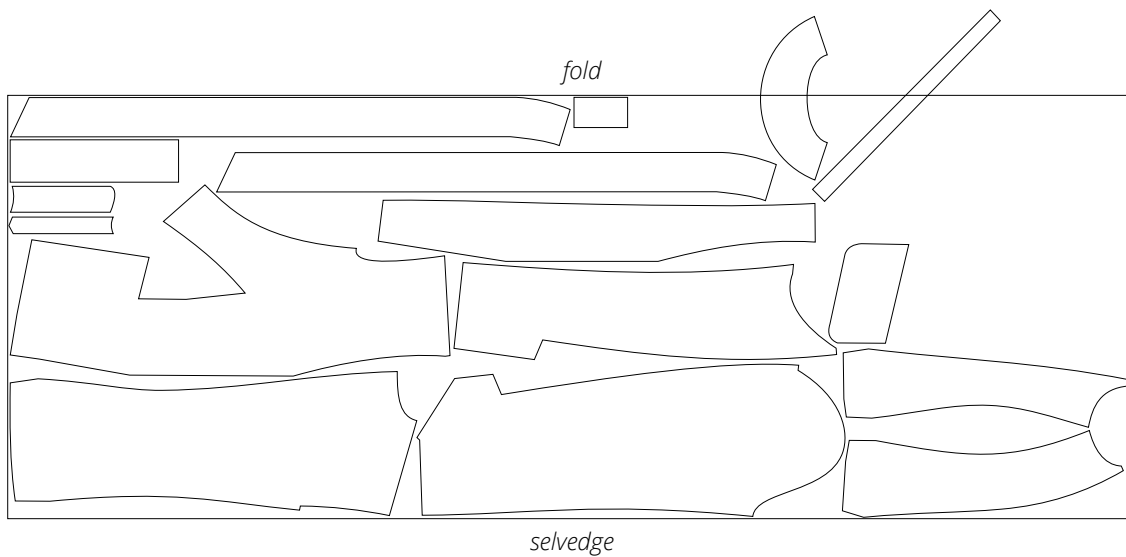
CUTTING LAYOUT

Main fabric, 140 cm (55") wide, with a directional print/nap, cut on fold, for sizes 34–38 in all heights.



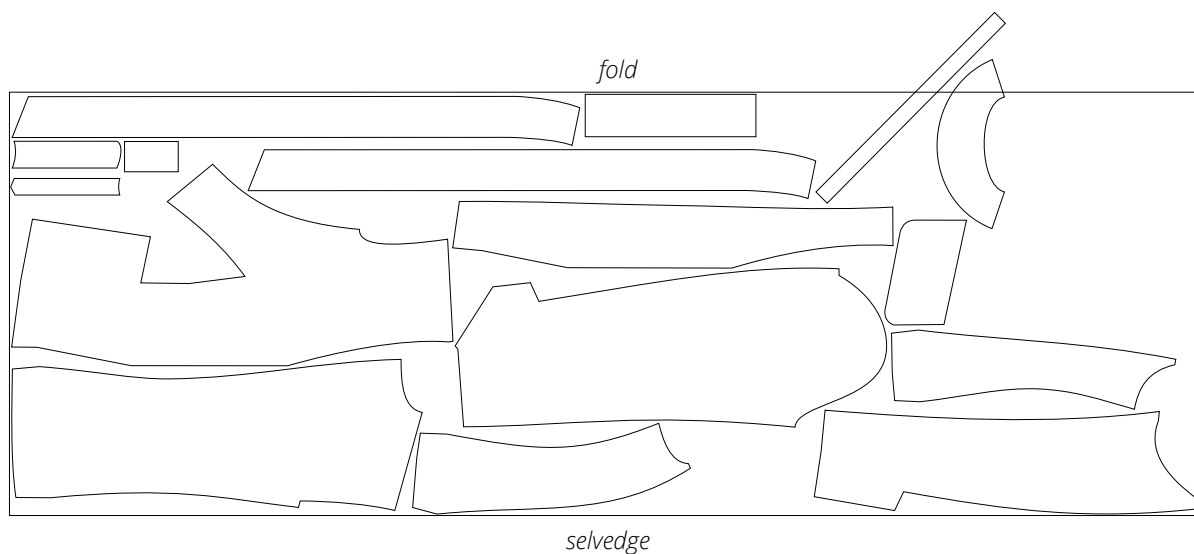
Attention! Cut only one back neck facing, placket, collar tab, and Rouleau strap for button loops.

Main fabric, 140 cm (55") wide, with a directional print/nap, cut on fold, for sizes 40–44 in all heights.



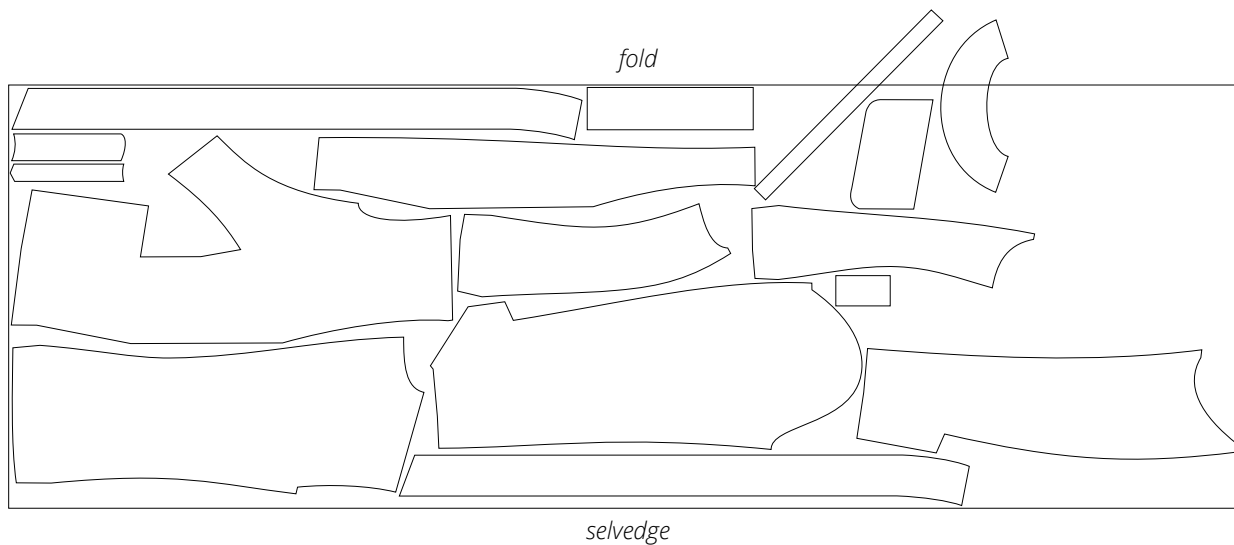
Attention! Cut only one back neck facing, placket, collar tab, and Rouleau strap for button loops.

Main fabric, 140 cm (55") wide, with a directional print/nap,
cut on fold, for sizes 46–48 in all heights.



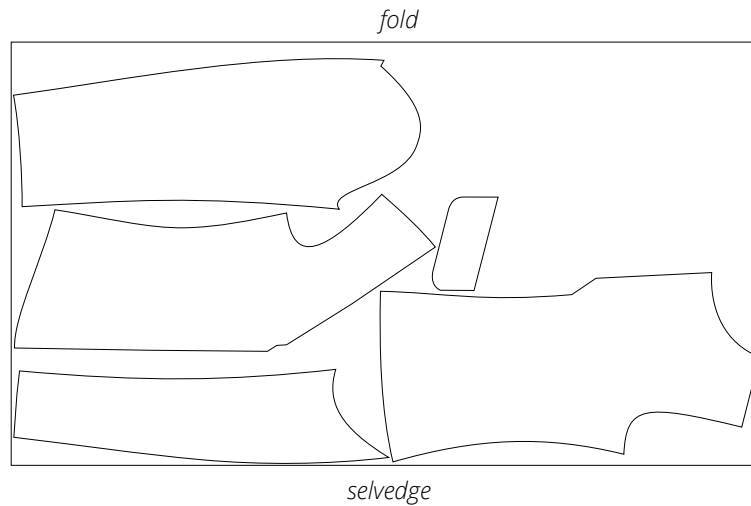
Attention! Cut only one back neck facing, placket, collar tab,
and Rouleau strap for button loops.

Main fabric, 140 cm (55") wide, with a directional print/nap,
cut on fold, for sizes 50–52 in all heights.

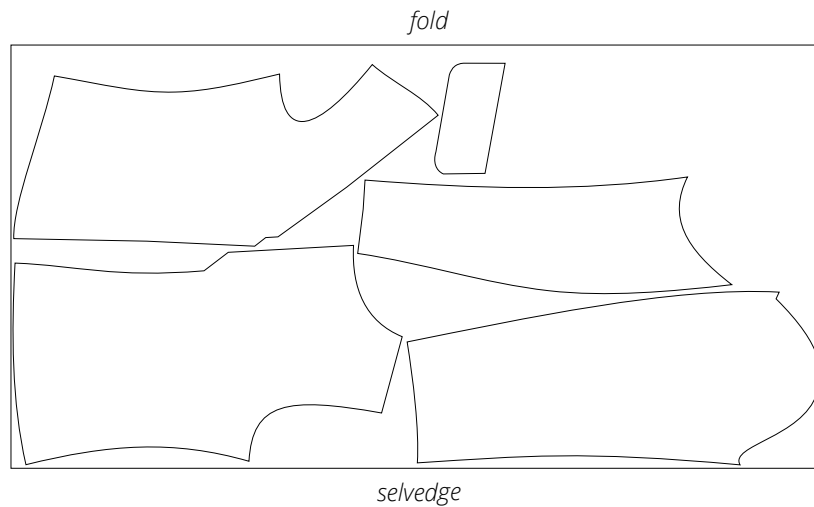


Attention! Cut only one back neck facing, placket, collar tab,
and Rouleau strap for button loops.

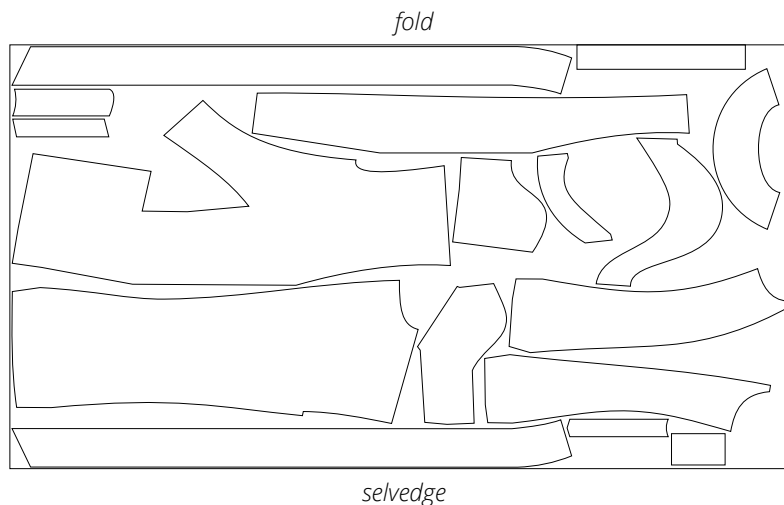
Lining fabric, 140 cm (55") wide, with a directional print, cut on fold, for sizes 34–40 in all heights.



Lining fabric, 140 cm (55") wide, with a directional print, cut on fold, for sizes 42–52 in all heights.

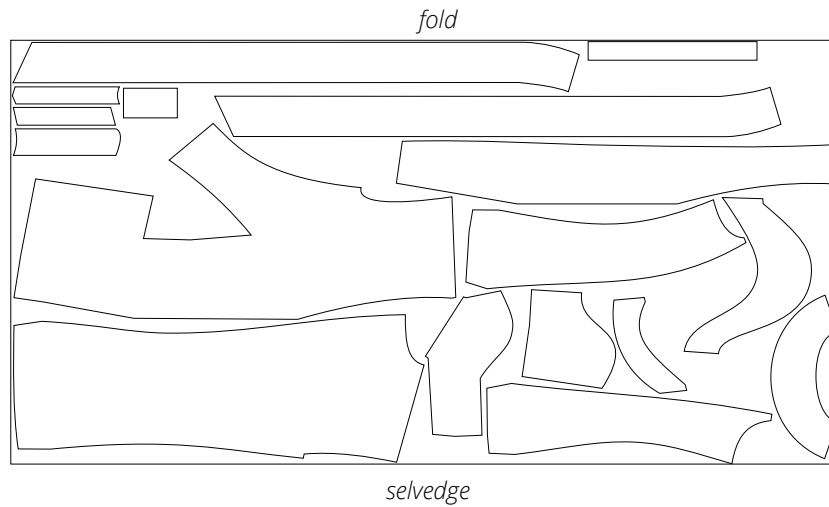


Interfacing, 140 cm (55") wide, cut on fold and in one direction, for sizes 34–42 in all heights.



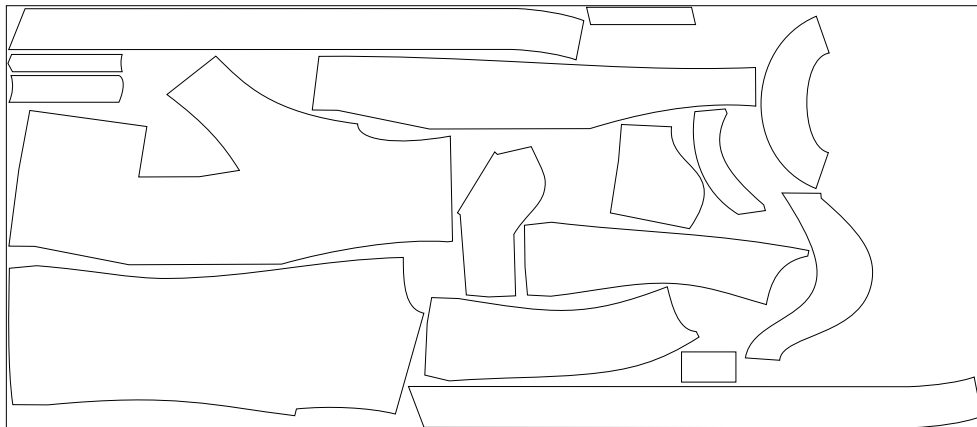
Attention! Cut one each of the back neck facing, placket, and collar tab pieces.

Interfacing, 140 cm (55") wide, cut on fold and in one direction, for sizes 44-46 in all heights.



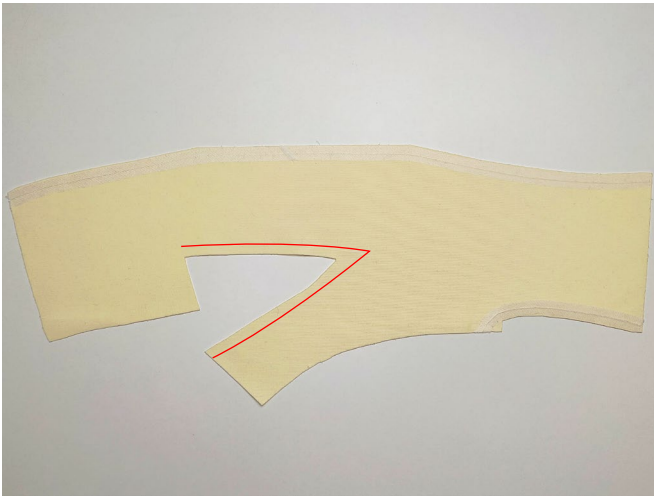
Attention! Cut one each of the back neck facing, placket, and collar tab pieces.

Interfacing, 140 cm (55") wide, cut on fold and in one direction, for sizes 48-52 in all heights.

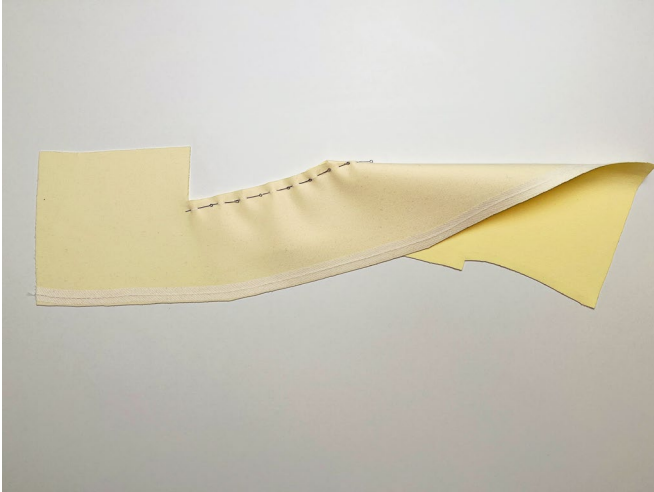


Attention! Cut one each of the back neck facing, placket, and collar tab pieces.

READY? LET'S GET SEWING!



Using tailor's chalk, transfer the dart lines from the pattern to the wrong side of the front piece.



Match up the dart legs on the wrong side of the front piece. Pin.

Machine-stitch, backstitching at the raw edge only. Leave long thread tails at the dart point. Tie the thread tails into a knot and hide them inside the dart bulk using a needle.



Cut the dart open in the middle, stopping about 1.5 cm (5/8") short of the dart point.



Clip into the dart seam allowance at the dart point, stopping 2 mm short of the seam.