

# FROM THE FOUNDER OF THE #VIKISEWS BRAND

---

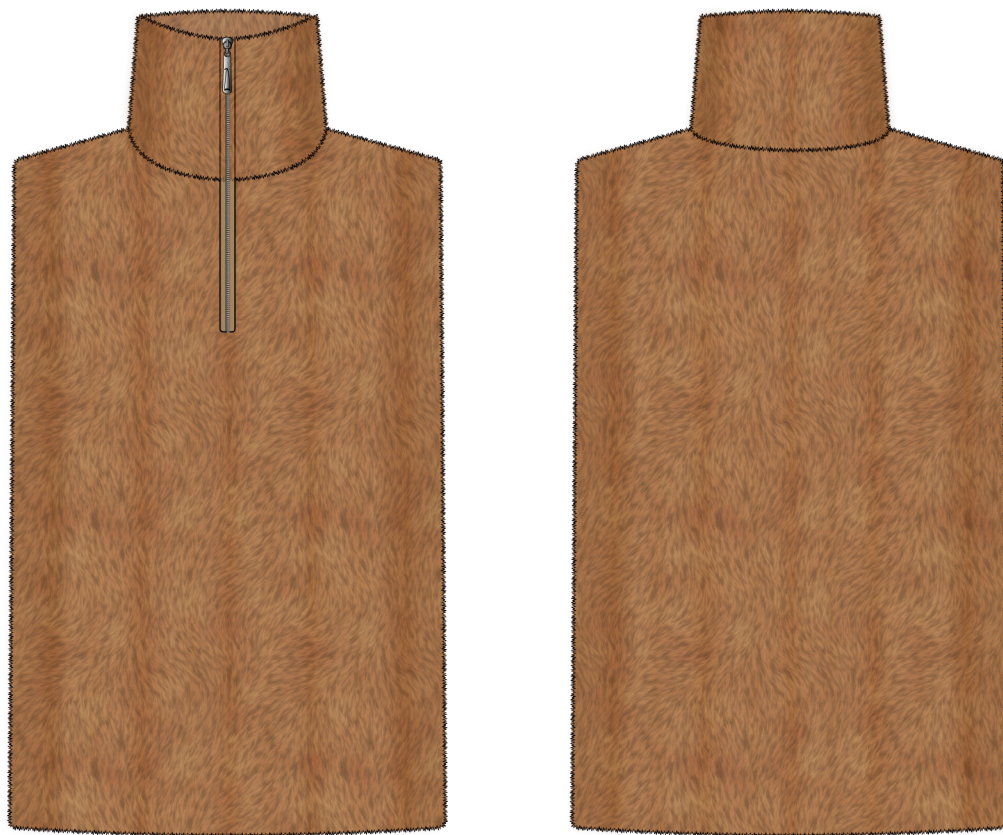


Back in 2016, when I was working on my first set of sewing instructions, I was trying to write them in such a way that even a complete beginner could easily understand and use them to create their very first garment. These instructions laid the foundation for the Vikisews brand, its vision and its mission. I wanted to create modern patterns with the utmost detailed and clear instructions.

Now, with each new collection we are constantly improving our instructions, amending them and adding more relevant details. By the time the final product reaches you, our drafters, correctors, and editors would have spent weeks perfecting every word and every photograph. If you compile a few of our instructions together, you will get a sewing manual that will assist you in sewing all kinds of garments at any difficulty level.

And I would be very happy if these instructions helped you to turn your hobby into a lifelong passion... Enjoy the process! Create your ultimate dream wardrobe! Wear your garments proudly for years to come!

If you have any questions, please contact us at [info@vikisews.com](mailto:info@vikisews.com) — we are always there to help.



## SUWEERA PATTERN DESCRIPTION

---

Suweera is a fully lined close-fitting dickey with a straight silhouette. It features a stand collar and closes with a partial front zipper that stops at the bust level. Suweera is below-waist length.



## IMPORTANT!

---

The contents of this pattern are copyright protected and belong exclusively to Vikisews. You may use Vikisews patterns for personal use. It is prohibited to share Vikisews patterns and instructions with third parties, as well as to publish patterns and instructions online for public access. **Non-compliance with the mentioned rules is a violation of the US copyright law and may result in civil liability and criminal prosecution.**

You may use Vikisews patterns for commercial use, to sew custom-made garments and/or create fashion collections, on the condition that the patterns are solely used in a manufacturing setting and are not further shared with individuals.

# GARMENT LENGTH, SLEEVE LENGTH

Height, cm	Center back length, cm	Height, ft	Center back length, in
1 (154–160)	49.5 – 56.7	1 (5'1"–5'3")	19 1/2 – 22 3/8
2 (162–168)	52.5 – 59.7	2 (5'4"–5'6")	20 5/8 – 23 1/2
3 (170–176)	55.5 – 62.7	3 (5'7"–5'9")	21 7/8 – 24 5/8
4 (178–184)	58.5 – 65.7	4 (5'10"–6'1")	23 – 25 7/8

# SUGGESTED FABRIC

To sew this dickey, choose coating fabrics with the following properties: medium weight, soft, non-stretch. The fiber content can include natural fibers, artificial fibers, blends, or synthetics.

The following fabrics are recommended: faux fur with a knit or woven backing, napped coating fabrics.

For the lining, choose lining fabrics made of artificial fibers (viscose), blends (viscose + elastane, viscose + polyester), or synthetics (polyester, polyester + elastane).

**Attention!** We recommend using medium pile faux fur (pile height up to 13 mm [1/2"]).

The dickey in the photos is made of faux fur with a knit backing. The fabric is medium weight, soft, non-stretch. The fiber content is 100% BPE. The fabric weight is 650 g/m<sup>2</sup>.

The lining is a blend of 55% viscose and 45% polyester. The fabric weight is 100 g/m<sup>2</sup>.

# FABRIC AND NOTIONS REQUIREMENTS

1. Main fabric, 140 cm wide, with a directional print/nap, in meters:

Height, cm	Size				
	XS	S	M	L	XL
1 (154–160)	0.75	0.75	0.8	0.8	0.85
2 (162–168)	0.8	0.8	0.85	0.85	0.85
3 (170–176)	0.8	0.85	0.85	0.9	0.9
4 (178–184)	0.85	0.85	0.9	0.9	0.9

Main fabric, 55" wide, with a directional print/nap, in yards:

Height, ft	Size			
	XS–S	M	L	XL
1 (5'1"–5'3")	7/8	7/8	7/8	7/8
2 (5'4"–5'6")	7/8	7/8	7/8	7/8
3 (5'7"–5'9")	7/8	7/8	1	1
4 (5'10"–6'1")	7/8	1	1	1

2. Lining fabric, 140 cm wide, with a directional print, in meters:

Height, cm	Size				
	XS	S	M	L	XL
1 (154–160)	0.6	0.6	0.6	0.65	0.65
2 (162–168)	0.6	0.65	0.65	0.65	0.7
3 (170–176)	0.65	0.65	0.7	0.7	0.7
4 (178–184)	0.65	0.7	0.7	0.7	0.75

Lining fabric, 55" wide, with a directional print, in yards:

Height, ft	Size			
	XS	S–M	L	XL
1 (5'1"–5'3")	5/8	5/8	3/4	3/4
2 (5'4"–5'6")	5/8	3/4	3/4	3/4
3 (5'7"–5'9")	3/4	3/4	3/4	3/4
4 (5'10"–6'1")	3/4	3/4	3/4	7/8

**IMPORTANT!** When purchasing fabric, please account for shrinkage and buy 5% more than required.

3. Lightweight knit or woven interfacing, 140 cm (55") wide, for all sizes in all heights — 25 cm (9 7/8").
4. Stitched bias-cut fusible stay tape with stitch reinforcement, 1.5 cm (5/8") wide — 70 cm (27 1/2").
5. One closed-end metal zipper, 25–30 cm (10–12") long, depending on the chosen size and height.
6. Matching thread — 1 spool for the sewing machine.

## TOOLS AND EQUIPMENT

---

- sewing machine for construction
- stitch-in-the-ditch foot for the sewing machine (optional)
- one-sided zipper foot for the sewing machine

## PATTERN PIECES LIST

---

### 1. From main fabric:

- front — cut 1 on fold
- back — cut 1 on fold
- collar — cut 2

### 2. From lining fabric:

- front lining — cut 1 on fold
- back lining — cut 1 on fold

### 3. From interfacing:

- collar — cut 2

***IMPORTANT!** Don't forget to transfer all pattern markings and notches onto the fabric.*

Additionally, cut interfacing strips to reinforce the following:

- zipper area on the front piece
- side seam allowances and hem allowance on the front and back pieces.

The interfacing strips should be cut on the cross grain (perpendicular to the selvedge).

## SEAM ALLOWANCES

---

The pattern pieces include the seam allowances as follows:

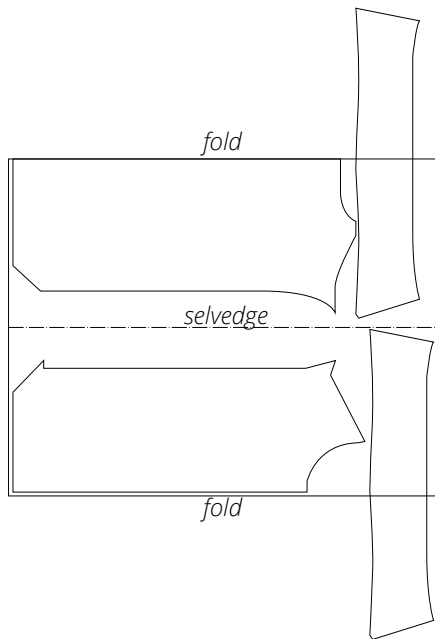
- hem allowance — 3 cm (1 1/8")
- side seam allowance — 3 cm (1 1/8")
- all other edges — 1 cm (3/8").

Take this into account when laying out pattern pieces on the fabric

# CUTTING LAYOUT

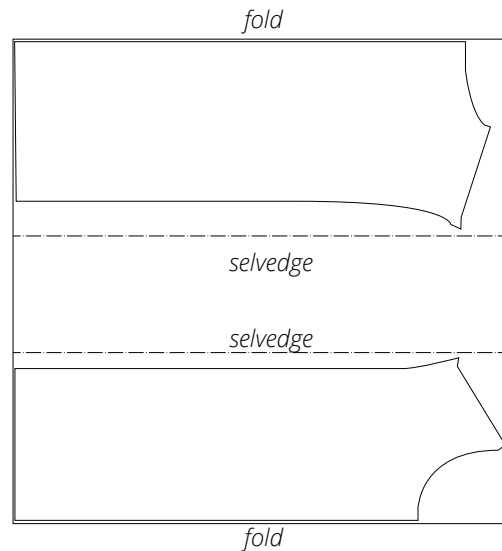
---

Main fabric, 140 cm (55") wide, with a directional print/nap, cut with two folds, for all sizes in all heights

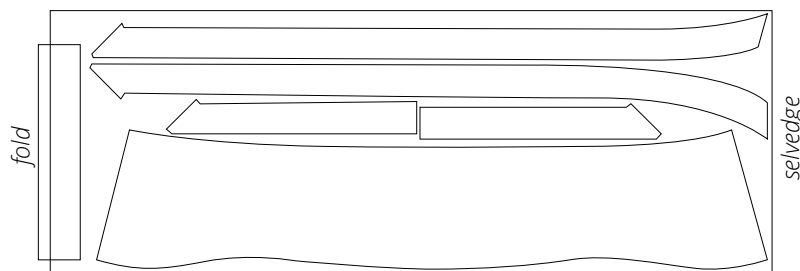


**Important!** The collar pieces are cut on a single layer out of leftover fabric.

Lining fabric, 140 cm (55") wide, with a directional print, cut with two folds, for all sizes in all heights



Interfacing, 140 cm (55") wide, cut on fold, for all sizes in all heights



**Important!** Cut the interfacing strip for seam allowances as a single piece on a single layer out of leftover fabric.

## READY? LET'S GET SEWING!

---



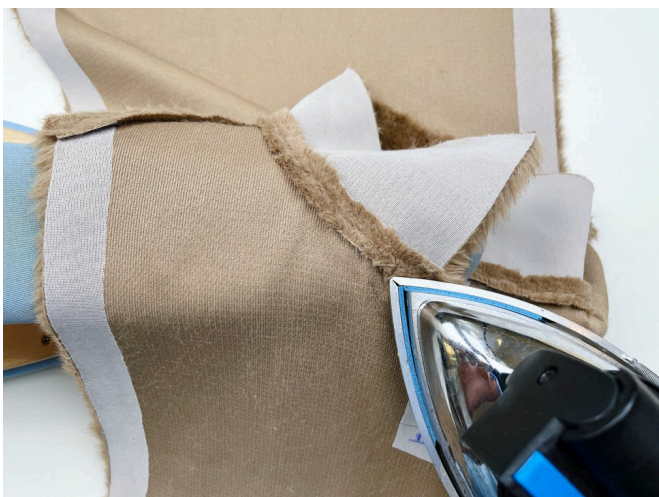
Press the shoulder seam allowances open.



Place the outer collar piece right sides together with the garment neckline. Align the edges, match the notches, and pin. Machine-stitch. Backstitch at the beginning and end of the seam.



Trim the pile from the collar and neckline seam allowances. Working on the right side of the garment, brush out the pile from the neckline seam using a thick needle, awl, seam ripper, or a specialized brush for fur and pile fabrics.



Press the seam allowances open.