

FROM THE FOUNDER OF THE #VIKISEWS BRAND

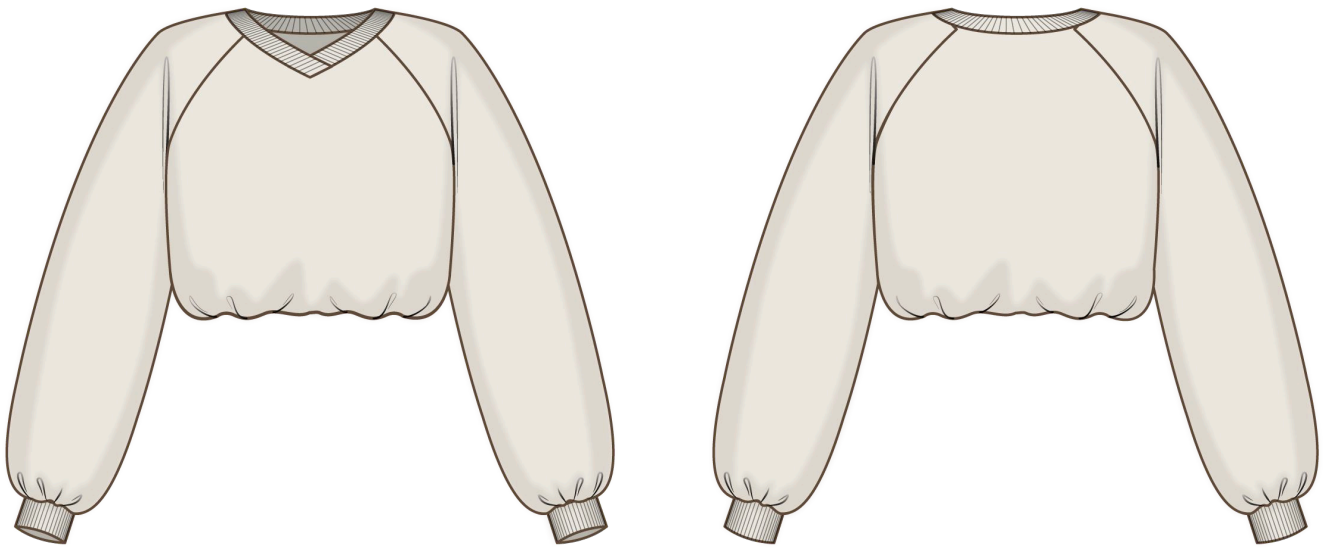


Back in 2016, when I was working on my first set of sewing instructions, I was trying to write them in such a way that even a complete beginner could easily understand and use them to create their very first garment. These instructions laid the foundation for the Vikisews brand, its vision and its mission. I wanted to create modern patterns with the utmost detailed and clear instructions.

Now, with each new collection we are constantly improving our instructions, amending them and adding more relevant details. By the time the final product reaches you, our drafters, correctors, and editors would have spent weeks perfecting every word and every photograph. If you compile a few of our instructions together, you will get a sewing manual that will assist you in sewing all kinds of garments at any difficulty level.

And I would be very happy if these instructions helped you to turn your hobby into a lifelong passion... Enjoy the process! Create your ultimate dream wardrobe! Wear your garments proudly for years to come!

If you have any questions, please contact us at info@vikisews.com — we are always there to help.



DOREAH PATTERN DESCRIPTION

Doreah is a loose-fitting sweater with a straight cut and an elasticated bottom. The V-neckline is finished with a neckband. The long, loose-fitting raglan sleeves are finished with cuffs. Doreah is below-waist length.



IMPORTANT

The contents of this pattern are copyright protected and belong exclusively to Vikisews. You may use Vikisews patterns for personal use. It is prohibited to share Vikisews patterns and instructions with third parties, as well as to publish patterns and instructions online for public access. **Non-compliance with the mentioned rules is a violation of the US copyright law and may result in civil liability and criminal prosecution.**

You may use Vikisews patterns for commercial use, to sew custom-made garments and/or create fashion collections, on the condition that the patterns are solely used in a manufacturing setting and are not further shared with individuals.

TOTAL EASE ALLOWANCE

	Bust ease	Waistline ease	Hipline ease
cm	40.9–32.9	56.1–48.1	19.8–15
inches	16 $\frac{1}{8}$ –13	22 $\frac{1}{8}$ –18 $\frac{7}{8}$	7 $\frac{3}{4}$ –5 $\frac{7}{8}$

GARMENT LENGTH, SLEEVE LENGTH

Height, cm	Center back length, cm	Sleeve length including shoulder width and cuff, cm
1 (154–160)	41.5–42.1	66.2–70.8
2 (162–168)	44.5–45.1	68.2–72.8
3 (170–176)	47.5–48.1	70.3–74.9
4 (178–184)	50.5–51.2	72.3–77
Height, ft	Center back length, in	Sleeve length including shoulder width and cuff, in
1 (5'1"–5'3")	16 $\frac{3}{8}$ –16 $\frac{5}{8}$	26 $\frac{1}{8}$ –27 $\frac{7}{8}$
2 (5'4"–5'6")	17 $\frac{1}{2}$ –17 $\frac{3}{4}$	26 $\frac{7}{8}$ –28 $\frac{5}{8}$
3 (5'7"–5'9")	18 $\frac{3}{4}$ –18 $\frac{7}{8}$	27 $\frac{5}{8}$ –29 $\frac{1}{2}$
4 (5'10"–6'1")	19 $\frac{7}{8}$ –20 $\frac{1}{8}$	28 $\frac{1}{2}$ –30 $\frac{3}{8}$

SUGGESTED FABRICS

To sew this sweater, choose medium-weight, pliable, soft sweater knit fabrics (1.2–1.5 stretch factor) made of natural, artificial, blended, or synthetic fibers.

The following fabrics are recommended: thick French terry, French terry, double knits, and sweater knits.

For the neckline binding and cuffs, we recommend using ribbed knits.

You can determine the fabric's stretch factor yourself: mark a 10 cm (4") section across the width, stretch it, and divide the stretched length by 10 to get the stretch factor.

The sweater in the photo is made of soft, pliable sweater knit. The fabric is medium weight, soft, and stretchy.

The fiber content is 50% merino wool + 50% acrylic.

The neckline binding and cuffs are made of ribbed sweater knit with the same fiber content: 50% merino wool + 50% acrylic.

The fabric weight is 280 g/m². The stretch factor is 1.5.

FABRIC AND NOTIONS REQUIREMENTS

1. Main fabric, 140 cm wide, with a directional print/nap, in meters:

Height, cm	Size		
	XS-M	L	XL
1 (154–160)	1.2	1.25	1.25
2 (162–168)	1.25	1.3	1.3
3 (170–176)	1.3	1.35	1.4
4 (178–184)	1.35	1.4	1.45

Main fabric, 55" wide, with a directional print/nap, in yards:

Height, ft	Size		
	XS-M	L	XL
1 (5'1"–5'3")	1 ¼	1 ¾	1 ¾
2 (5'4"–5'6")	1 ¾	1 ¾	1 ¾
3 (5'7"–5'9")	1 ¾	1 ½	1 ½
4 (5'10"–6'1")	1 ½	1 ½	1 ⅝

2. Main fabric, 180 cm wide, with a directional print/nap, in meters:

Height, cm	Size				
	XS	S	M	L	XL
1 (154–160)	1.05	1.15	1.2	1.1	1.15
2 (162–168)	1.1	1.2	1.25	1.15	1.2
3 (170–176)	1.15	1.25	1.3	1.2	1.25
4 (178–184)	1.2	1.3	1.35	1.25	1.3

Main fabric, 71" wide, with a directional print/nap, in yards:

Height, ft	Size				
	XS	S	M	L	XL
1 (5'1"–5'3")	1 ⅛	1 ¼	1 ¼	1 ¼	1 ¼
2 (5'4"–5'6")	1 ¼	1 ¼	1 ¾	1 ¼	1 ¼
3 (5'7"–5'9")	1 ¼	1 ¾	1 ¾	1 ¼	1 ¾
4 (5'10"–6'1")	1 ¼	1 ¾	1 ½	1 ¾	1 ¾

IMPORTANT! When purchasing fabric, please account for shrinkage and buy 5% more than required.

3. Additional fabric, 120 cm (47") wide, with a directional print/nap, for all sizes and heights — 0.2 m (8")

4. Elastic, 6 cm (2 3/8") wide — 60–90 cm (23 5/8–35 3/8"), depending on size. The exact elastic length is specified in the pattern

5. Matching thread — 5 spools (1 spool for the sewing machine + 4 spools for the overlocker)

TOOLS AND EQUIPMENT

- sewing machine for construction
- overlocker for construction and finishing raw edges. This may be replaced with a stretch overlock stitch or a zigzag stitch on the sewing machine (overlock or zigzag stitch width 2–3 mm, stitch length 2.5 mm)

***IMPORTANT!** We recommend using specialty needles when working with knit fabrics (for example, STRETCH, SUPER STRETCH, JERSEY, etc.). These are ballpoint needles, so they part the threads of the fabric you are stitching without piercing them.*

PATTERN PIECES LIST

1. From main fabric:

- front — cut 1 on fold
- back — cut 1 on fold
- sleeve — cut 2

2. From additional fabric:

- cuff — cut 2
- neckline binding — cut 1 on fold

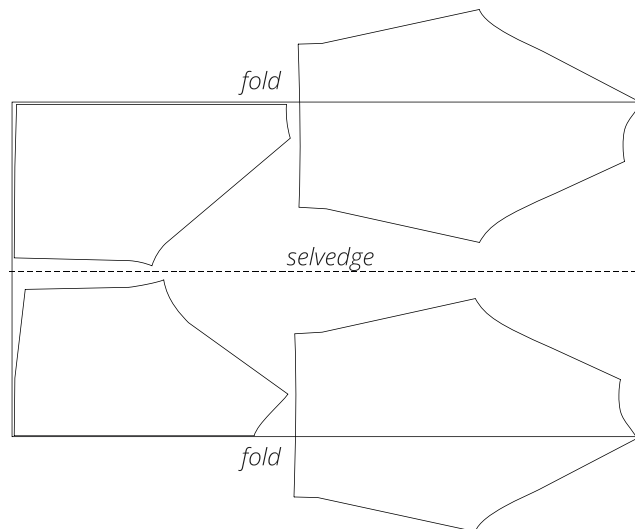
***IMPORTANT!** Don't forget to transfer all pattern markings and notches onto the fabric.*

SEAM ALLOWANCES

All pattern pieces include 1 cm (3/8") seam allowances.
Take this into account when laying out pattern pieces on the fabric.

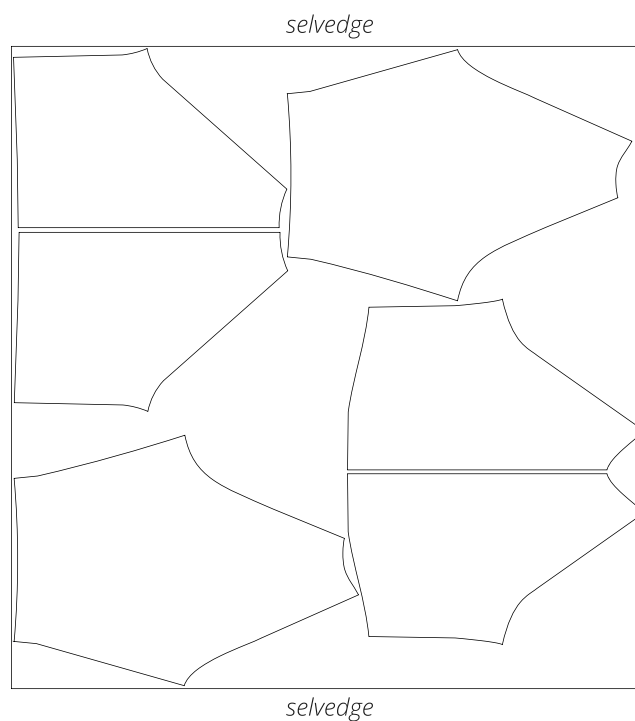
CUTTING LAYOUT

Main fabric, 140 cm (55") wide, with a directional print/nap, cut with two folds,
for sizes XS–S in all heights

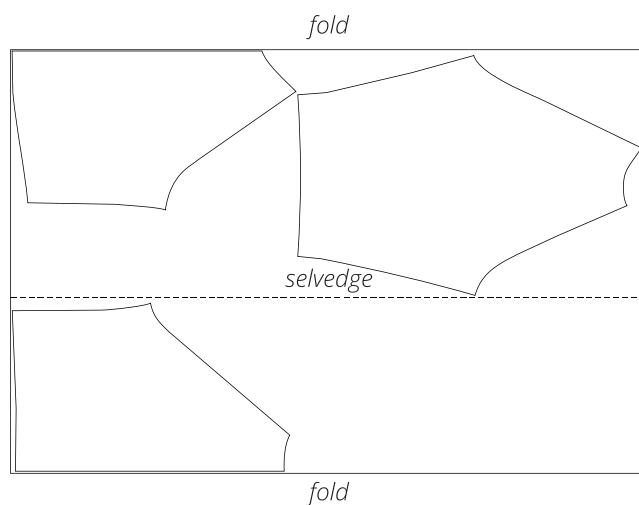


Attention! Cut the sleeve pieces on a single layer
out of the leftover fabric.

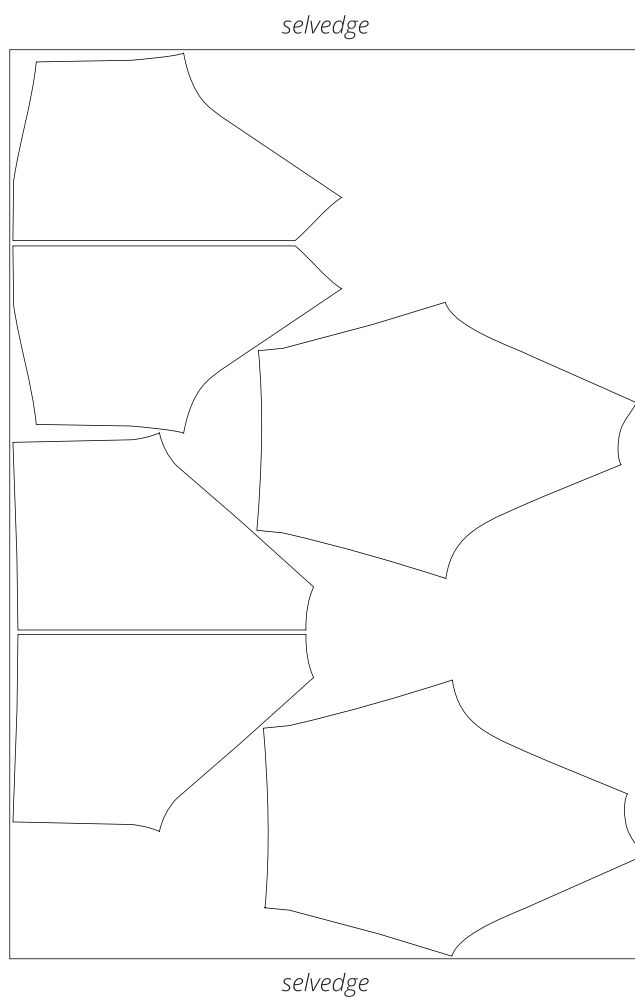
Main fabric, 140 cm (55") wide, with a directional print/nap, cut on a single layer,
for sizes M–XL in all heights



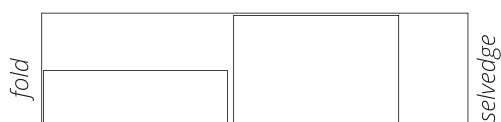
Main fabric, 180 cm (71") wide,
with a directional print/nap, cut with two folds,
for sizes XS–M in all heights



Main fabric, 180 cm (71") wide,
with a directional print/nap, cut on a single
layer, for sizes L–XL in all heights



Additional fabric, 120 cm (47") wide,
with a directional print/nap, cut on fold,
for all sizes in all heights



READY? LET'S GET SEWING!



Place the sleeves and the front piece right sides together. Align the armhole edges, match the notches, and pin.



Stitch on the overlocker, with the front piece facing up.
Press the seam flat.



Press the seam allowances toward the sleeve.



Place the front and back as well as the sleeves right sides together. Align the side and underarm seams, match the notches and seams, and pin.