

# FROM THE FOUNDER OF THE #VIKISEWS BRAND

---



Back in 2016, when I was working on my first set of sewing instructions, I was trying to write them in such a way that even a complete beginner could easily understand and use them to create their very first garment. These instructions laid the foundation for the Vikisews brand, its vision and its mission. I wanted to create modern patterns with the utmost detailed and clear instructions.

Now, with each new collection we are constantly improving our instructions, amending them and adding more relevant details. By the time the final product reaches you, our drafters, correctors, and editors would have spent weeks perfecting every word and every photograph. If you compile a few of our instructions together, you will get a sewing manual that will assist you in sewing all kinds of garments at any difficulty level.

And I would be very happy if these instructions helped you to turn your hobby into a lifelong passion... Enjoy the process! Create your ultimate dream wardrobe! Wear your garments proudly for years to come!

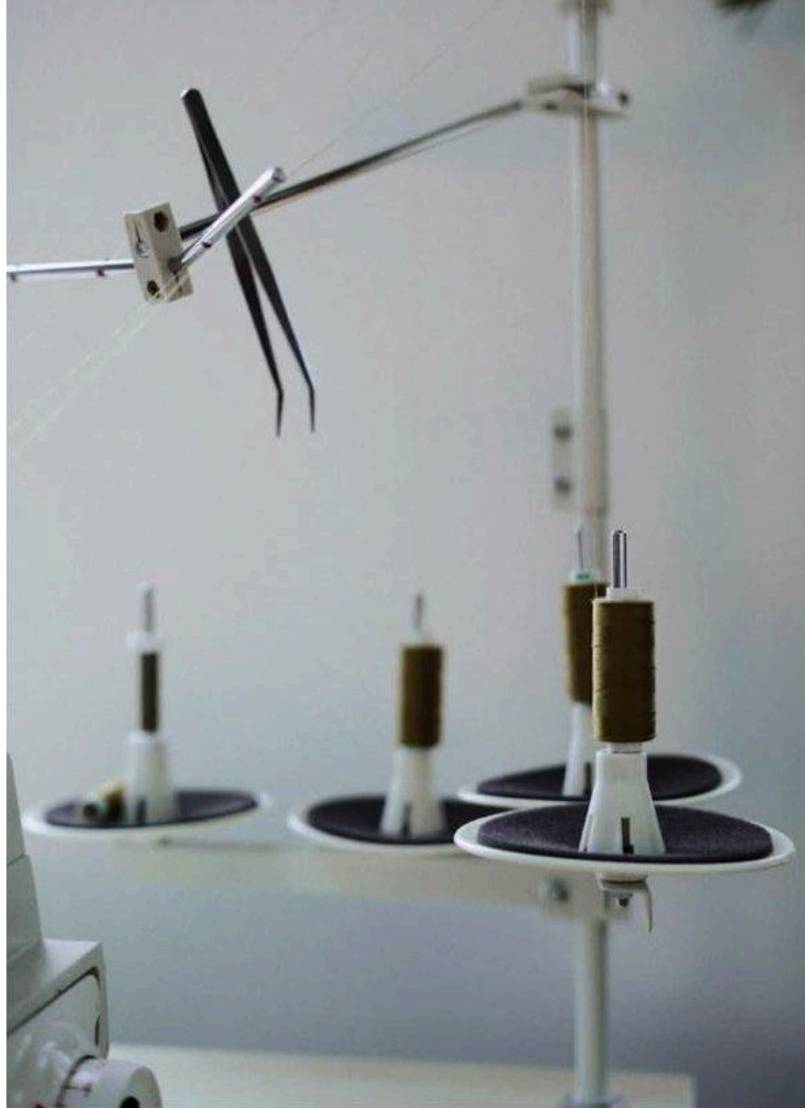
If you have any questions, please contact us at [info@vikisews.com](mailto:info@vikisews.com) — we are always there to help.



## SHAE PATTERN DESCRIPTION

---

Shae is a fully lined, semi-fitted jacket with a straight cut. There are welt pockets on the front. The right front also features a faux welt pocket with a decorative detail. The stand collar with a shaped edge closes with a buckle. The sleeves are long, shirt style. The jacket fastens with an open-end zipper and a belt with a buckle threaded through the faced openings. The jacket is below-waist length.



## IMPORTANT

---

The contents of this pattern are copyright protected and belong exclusively to Vikisews. You may use Vikisews patterns for personal use. It is prohibited to share Vikisews patterns and instructions with third parties, as well as to publish patterns and instructions online for public access. **Non-compliance with the mentioned rules is a violation of the US copyright law and may result in civil liability and criminal prosecution.**

You may use Vikisews patterns for commercial use, to sew custom-made garments and/or create fashion collections, on the condition that the patterns are solely used in a manufacturing setting and are not further shared with individuals.

# TOTAL EASE ALLOWANCE

	Bust ease	Waistline ease	Hipline ease
cm	35.6–31.1	53.2–49.3	19.6–14.2
inches	14–12 ¼	21–19 ¾	7 ¾–5 ⅝

# GARMENT LENGTH, SLEEVE LENGTH

Height, cm	Center back length, cm	Sleeve length including shoulder width, cm
1 (154–160)	52.2–53.6	73.9–77.4
2 (162–168)	55.2–56.6	76.1–79.6
3 (170–176)	58.2–59.6	77.9–81.4
4 (178–184)	61.2–62.6	79.9–83.4
Height, ft	Center back length, in	Sleeve length including shoulder width, in
1 (5'1"–5'3")	20 ½–21 ⅛	29 ⅛–30 ½
2 (5'4"–5'6")	21 ¾–22 ¼	30–31 ¾
3 (5'7"–5'9")	22 ⅞–23 ½	30 ⅝–32
4 (5'10"–6'1")	24 ⅛–24 ⅝	31 ½–32 ⅞

# SUGGESTED FABRICS

To sew this jacket, choose dense, structured, non-stretch or low-stretch outerwear fabrics made of natural, artificial, blended, or synthetic fibers.

The following fabrics are recommended: outerwear gabardine, corduroy, leather, and suede.

**Attention!** We do not recommend thin, soft outerwear fabrics.

For the lining, we recommend using artificial, blended, or synthetic lining fabrics.

For insulation, we recommend using materials with a weight of 150 g/m<sup>2</sup> or 200 g/m<sup>2</sup>, such as Alpolux, Isosoft, Hollofiber, or synthetic batting.

The jacket in the photo is made of corduroy. The fabric is medium weight, soft, and low-stretch.

The fiber content is 100% polyester. The fabric weight is 320 g/m<sup>2</sup>.

The lining is made of 100% viscose. The fabric weight is 100 g/m<sup>2</sup>.

The insulation is Alpolux, 150 g/m<sup>2</sup>.

# FABRIC AND NOTIONS REQUIREMENTS

1. Main fabric, 140 cm wide, with a directional print/nap, in meters

Height, cm	Size					
	34	36	38-40	42	44-46	48-52
1 (154-160)	2.05	2.1	2.45	2.45	2.5	2.6
2 (162-168)	2.15	2.15	2.5	2.55	2.6	2.65
3 (170-176)	2.2	2.25	2.6	2.65	2.7	2.75
4 (178-184)	2.3	2.35	2.75	2.75	2.8	2.85

Main fabric, 55" wide, with a directional print/nap, in yards

Height, ft	Size				
	34	36	38-42	44-46	48-52
1 (5'1"-5'3")	2 ¼	2 ¼	2 ⅝	2 ¾	2 ⅞
2 (5'4"-5'6")	2 ¾	2 ¾	2 ¾	2 ⅞	2 ⅞
3 (5'7"-5'9")	2 ¾	2 ¾	2 ⅞	3	3
4 (5'10"-6'1")	2 ½	2 ½	3	3	3 ⅛

2. Additional fabric, 140 cm (55") wide, with a directional print/nap, for all heights

Size	34	36	38-40	42	44	46-48	50	52
Meters	1.45	1.5	1.55	1.6	1.65	1.7	1.75	1.8
Yards	1 ⅝	1 ⅝	1 ¾	1 ¾	1 ¾	1 ⅞	1 ⅞	2

3. Lining fabric, 140 cm wide, with a directional print/nap, in meters

Height, cm	Size		
	34-40	42-48	50-52
1 (154-160)	1.1	1.2	1.3
2 (162-168)	1.15	1.2	1.35
3 (170-176)	1.2	1.25	1.4
4 (178-184)	1.2	1.25	1.4

Lining fabric, 55" wide, with a directional print/nap, in yards

Height, ft	Size		
	34-40	42-48	50-52
1 (5'1"-5'3")	1 ¼	1 ¼	1 ⅜
2 (5'4"-5'6")	1 ¼	1 ¼	1 ½
3 (5'7"-5'9")	1 ¼	1 ⅜	1 ½
4 (5'10"-6'1")	1 ¼	1 ⅜	1 ½

4. Alpolux 150 insulation, 140 cm wide, cut in one direction, in meters

Height, cm	Size									
	34	36	38	40	42	44	46	48	50	52
1 (154–160)	1.55	1.55	1.8	1.85	1.9	1.95	2.05	2.15	2.2	2.2
2 (162–168)	1.6	1.65	1.85	1.9	2	2.05	2.1	2.2	2.25	2.3
3 (170–176)	1.65	1.7	1.9	2	2.05	2.1	2.2	2.25	2.3	2.35
4 (178–184)	1.7	1.75	1.95	2.05	2.1	2.2	2.25	2.35	2.4	2.45

Alpolux 150 insulation, 55" wide, cut in one direction, in yards

Height, ft	Size									
	34	36	38	40	42	44	46	48	50	52
1 (5'1"–5'3")	1 $\frac{3}{4}$	1 $\frac{3}{4}$	2	2	2 $\frac{1}{8}$	2 $\frac{1}{8}$	2 $\frac{1}{4}$	2 $\frac{3}{8}$	2 $\frac{3}{8}$	2 $\frac{3}{8}$
2 (5'4"–5'6")	1 $\frac{3}{4}$	1 $\frac{3}{4}$	2	2 $\frac{1}{8}$	2 $\frac{1}{8}$	2 $\frac{1}{4}$	2 $\frac{1}{4}$	2 $\frac{3}{8}$	2 $\frac{1}{2}$	2 $\frac{1}{2}$
3 (5'7"–5'9")	1 $\frac{3}{4}$	1 $\frac{7}{8}$	2 $\frac{1}{8}$	2 $\frac{1}{8}$	2 $\frac{1}{4}$	2 $\frac{1}{4}$	2 $\frac{3}{8}$	2 $\frac{1}{2}$	2 $\frac{1}{2}$	2 $\frac{5}{8}$
4 (5'10"–6'1")	1 $\frac{7}{8}$	1 $\frac{7}{8}$	2 $\frac{1}{8}$	2 $\frac{1}{4}$	2 $\frac{1}{4}$	2 $\frac{3}{8}$	2 $\frac{1}{2}$	2 $\frac{5}{8}$	2 $\frac{5}{8}$	2 $\frac{5}{8}$

**IMPORTANT!** When purchasing fabric, please account for shrinkage and buy 5% more than required.

5. Lightweight interfacing, knit or woven, 140 cm (55") wide, for all sizes and heights — 1.35 m (1 1/2 yd)
6. Stitched bias-cut fusible stay tape with stitch reinforcement, 1.5 cm (5/8") wide — 2.1 m (2 1/4 yd)
7. One separating metal zipper, 40–50 cm (16–20") long, for all sizes and heights
8. Two S-spring type snap fasteners, 12 mm (1/2") in diameter (+/-2 spare)
9. One 2.5–3 cm (1–1 1/8") wide (inner width) prong buckle for the collar
10. One 4.5–5 cm (1 3/4–2") wide (inner width) prong buckle for the belt
11. Double-sided adhesive tape, 0.7–1 cm (1/4–3/8") wide — 1 roll
12. Matching thread for the main fabric — 2 spools
13. Topstitching thread matching the additional fabric (e.g., Madeira No. 35) — 2 spools

# TOOLS AND EQUIPMENT

---

- sewing machine for construction
- stitch-in-the-ditch foot for the sewing machine (optional)
- teflon or walking foot for the sewing machine
- one-sided foot for the sewing machine to attach the zipper
- hammer for flattening the seam allowances
- hole puncher or awl
- press tool and molds for installing snaps

## PATTERN PIECES LIST

---

### 1. From main fabric:

- front — cut 2
- back — cut 1 on fold
- sleeve — cut 2
- stand collar — cut 2 on fold
- front facing — cut 2
- back neck facing — cut 1 on fold
- back hem facing — cut 1 on fold
- side pocket welt — cut 2
- outer pocket facing (side pocket) — cut 2
- chest pocket welt — cut 1
- outer pocket facing (chest pocket) — cut 1
- decorative chest pocket piece — cut 1

***IMPORTANT!** Don't forget to transfer all pattern markings and notches onto the fabric.*

### 2. From additional fabric (leather or faux leather):

- belt — cut 2
- belt opening facing — cut 1 (4 pcs.)
- collar tab — cut 2
- buckle holder — cut 1
- collar tab loop — cut 1

### 3. From lining fabric:

- front lining — cut 2
- back lining — cut 1 on fold
- sleeve lining — cut 2
- pocket top lining (side pocket) — cut 2
- pocket bottom lining (side pocket) — cut 2

#### 4. From insulation (Alpolux 150):

- front — cut 2
- back — cut 1 on fold
- sleeve — cut 2
- stand collar— cut 2 on fold
- side pocket welt (half width) — cut 2
- chest pocket welt (half width) — cut 1

#### 5. From interfacing:

- stand collar — cut 2 on fold
- front facing — cut 2
- back neck facing — cut 1 on fold
- back hem facing — cut 1 on fold
- side pocket welt — cut 2
- outer pocket facing (side pocket) — cut 2
- chest pocket welt — cut 1
- outer pocket facing (chest pocket) — cut 1
- decorative chest pocket piece (half width) — cut 1
- belt — cut 1
- belt opening facing — cut 1 (4 pcs.)
- collar tab — cut 1
- buckle holder — cut 1

#### Additionally, cut the following from interfacing:

- three strips (width and length according to the pattern) to interface the pocket opening on the front pieces
- one  $3 \times 4$  cm ( $1 \frac{1}{8} \times 1 \frac{5}{8}$ ") square to interface the area under the collar tab on the left front piece
- eight rectangular pieces (width and length according to the pattern) to interface the belt openings on the front and back pieces
- two strips (width and length according to the pattern) to interface the hem allowance on the sleeve pieces

The interfacing strips should be cut on the straight grain (parallel to the selvedge).

## SEAM ALLOWANCES

---

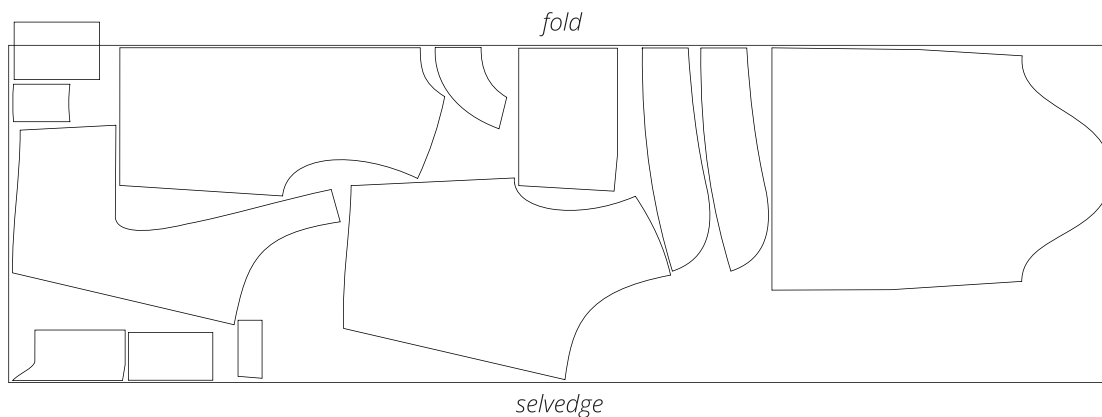
All pattern pieces include seam allowances as follows:

- pocket lining curved edges — 1.5 cm (5/8")
- all other edges — 1 cm (3/8")

Take this into account when laying out the pattern pieces on the fabric.

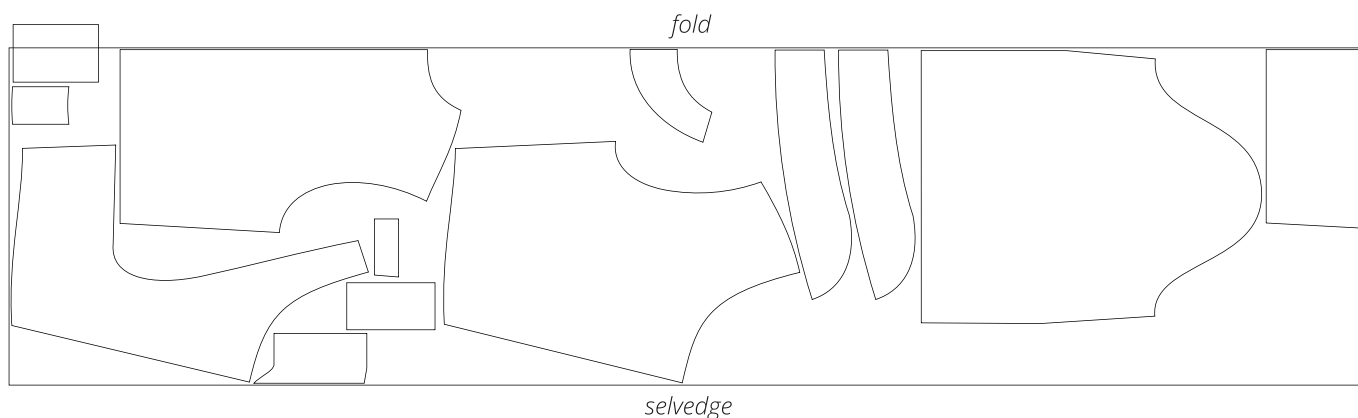
# CUTTING LAYOUT

Main fabric, 140 cm (55") wide, with a directional print/nap, cut on fold,  
for sizes 34–36 in all heights



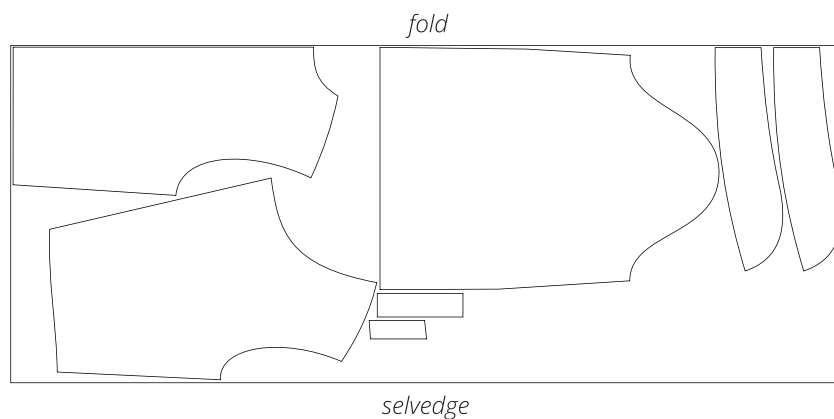
**Attention!** Cut only one chest pocket welt, decorative chest pocket piece,  
and chest pocket facing

Main fabric, 140 cm (55") wide, with a directional print/nap, cut on fold,  
for sizes 38–52 in all heights

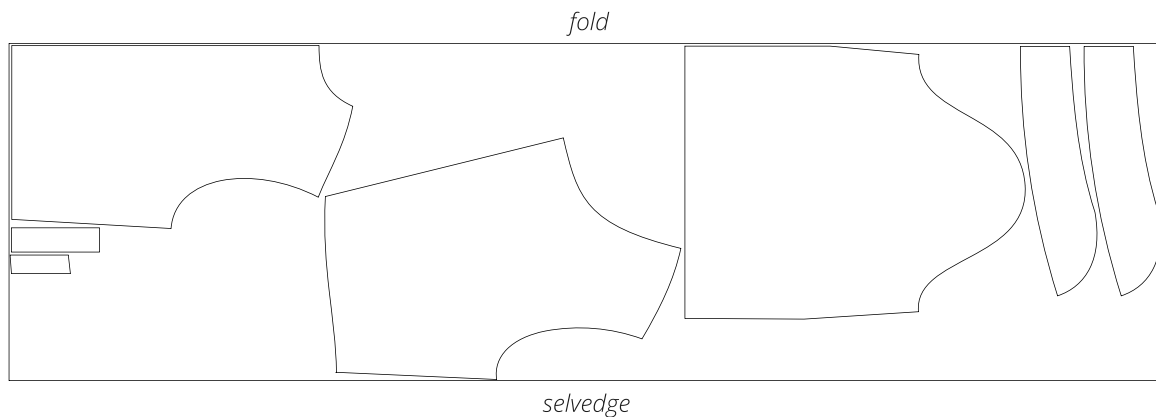


**Attention!** Cut only one chest pocket welt, decorative chest pocket piece,  
and chest pocket facing

Insulation (Alpolux 150), 140 cm (55") wide, cut on fold,  
for sizes 34–36 in all heights

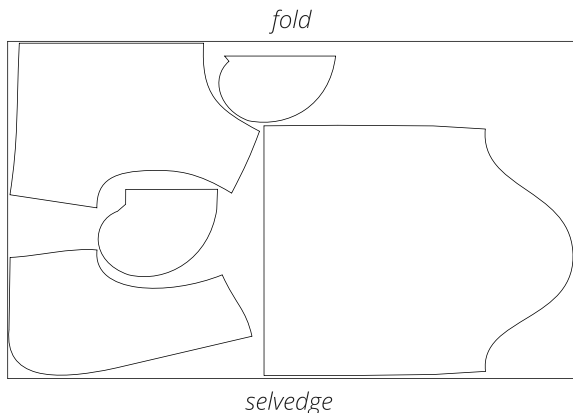


Insulation (Alpolux 150), 140 cm (55") wide, cut on fold,  
for sizes 38–52 in all heights

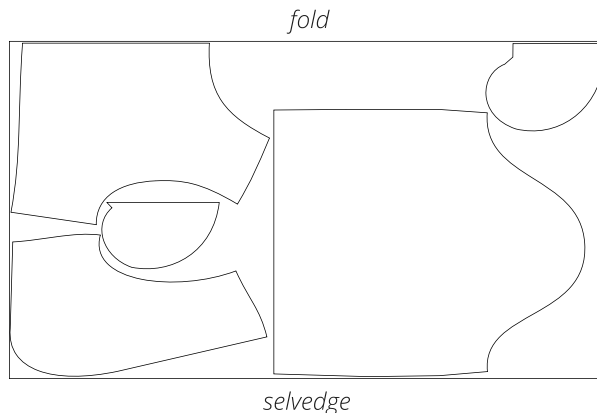


**Attention!** Cut only one chest pocket welt

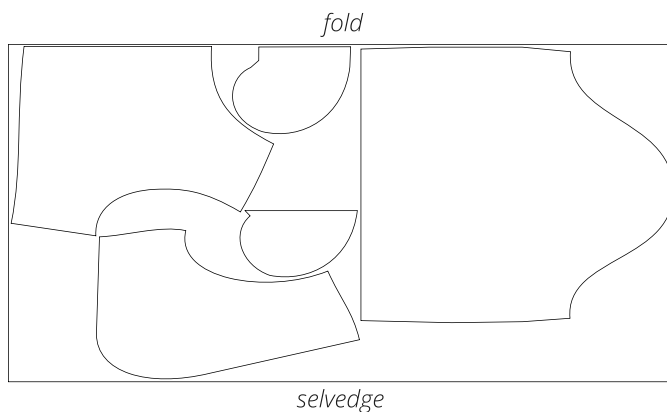
Lining fabric, 140 cm (55") wide,  
with a directional print, cut on fold,  
for sizes 34–40 in all heights



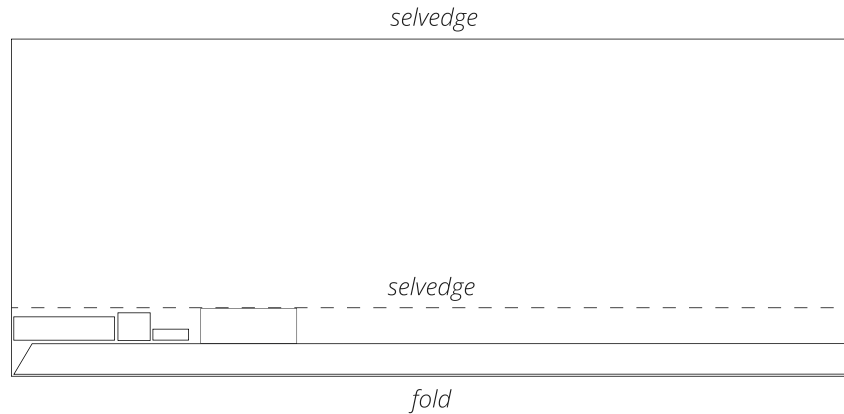
Lining fabric, 140 cm (55") wide,  
with a directional print, cut on fold,  
for sizes 42–48 in all heights



Lining fabric, 140 cm (55") wide, with a directional print, cut on fold,  
for sizes 50–52 in all heights

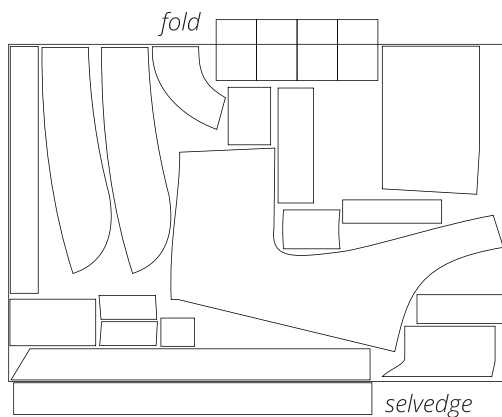


Additional fabric, 140 cm (55") wide, with a directional print/nap, cut on a partial fold, for all sizes in all heights



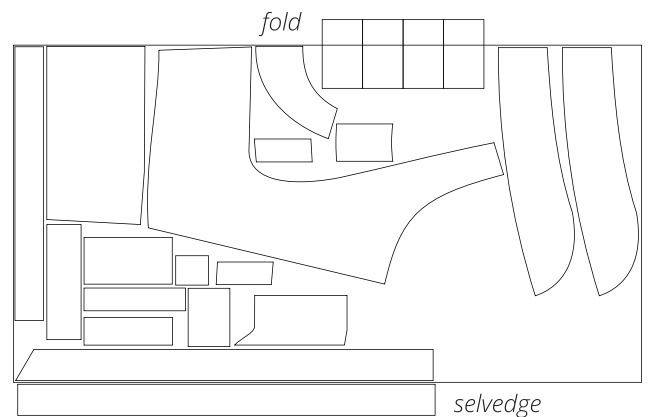
**Attention!** Cut only one buckle holder, collar tab loop, and belt opening facing

Interfacing, 140 cm (55") wide, cut on fold, for sizes 34–38 in all heights



**Attention!** Cut only one decorative chest pocket piece, belt opening facing, chest pocket facing, belt hole reinforcement, chest pocket welt, chest pocket reinforcement, belt (2 pieces), collar tab, and buckle holder

Interfacing, 140 cm (55") wide, cut on fold, for sizes 40–52 in all heights



**Attention!** Cut only one decorative chest pocket piece, belt opening facing, chest pocket facing, belt hole reinforcement, chest pocket welt, chest pocket reinforcement, belt (2 pieces), collar tab, and buckle holder

# READY? LET'S GET SEWING!



Place the pieces from the main fabric wrong side down onto the corresponding insulation pieces. Pin the along all the edges:

- front — 2 pieces
- back — 1 piece on fold
- sleeve — 2 pieces
- outer stand collar — 1 piece on fold



**Important!** Apply both pieces of insulation to the outer collar piece.



For the sleeve, cut out the insulation piece without the hem allowance.