

FROM THE FOUNDER OF THE #VIKISEWS BRAND



Back in 2016, when I was working on my first set of sewing instructions, I was trying to write them in such a way that even a complete beginner could easily understand and use them to create their very first garment. These instructions laid the foundation for the Vikisews brand, its vision and its mission. I wanted to create modern patterns with the utmost detailed and clear instructions.

Now, with each new collection we are constantly improving our instructions, amending them and adding more relevant details. By the time the final product reaches you, our drafters, correctors, and editors would have spent weeks perfecting every word and every photograph. If you compile a few of our instructions together, you will get a sewing manual that will assist you in sewing all kinds of garments at any difficulty level.

And I would be very happy if these instructions helped you to turn your hobby into a lifelong passion... Enjoy the process! Create your ultimate dream wardrobe! Wear your garments proudly for years to come!

If you have any questions, please contact us at info@vikisews.com — we are always there to help.



INDIRA PATTERN DESCRIPTION

Indira is a pair of loose-fitting, O-shaped pants sitting 4 cm (1 5/8") below the natural waistline. The applied two-piece waistband features topstitched belt loops and closes with a stud button and buttonhole. There are slash pockets at the front, as well as patch pockets and a yoke at the back. The pants have a fly front zipper closure. The pockets, fly front, yoke, belt loops, and crotch seam feature decorative topstitching. Indira is ankle-length.



IMPORTANT!

The contents of this pattern are copyright protected and belong exclusively to Vikisews. You may use Vikisews patterns for personal use. It is prohibited to share Vikisews patterns and instructions with third parties, as well as to publish patterns and instructions online for public access. **Non-compliance with the mentioned rules is a violation of the US copyright law and may result in civil liability and criminal prosecution.**

You may use Vikisews patterns for commercial use, to sew custom-made garments and/or create fashion collections, on the condition that the patterns are solely used in a manufacturing setting and are not further shared with individuals.

TOTAL EASE ALLOWANCE

	Waistline ease (estimated)	Hipline ease
cm	8.8–9	4.8–6
inches	3 ½	1 ⅞–2 ¾

GARMENT LENGTH, HEM WIDTH

Height, cm	Side seam length including waistband, cm	Finished hem width, cm
1 (154–160)	92.5–94.1	18.7–21.8
2 (162–168)	96.5–98.1	18.7–21.8
3 (170–176)	100.4–102	18.7–21.8
4 (178–184)	104.4–106	18.7–21.8

Height, ft	Side seam length including waistband, in	Finished hem width, in
1 (5'1"–5'3")	36 ¾–37	7 ⅞–8 ⅝
2 (5'4"–5'6")	38–38 ⅝	7 ⅞–8 ⅝
3 (5'7"–5'9")	39 ½–40 ⅛	7 ⅞–8 ⅝
4 (5'10"–6'1")	41 ⅛–41 ¾	7 ⅞–8 ⅝

SUGGESTED FABRIC

To sew these pants, choose heavyweight or medium-weight, low-stretch fabrics made of natural, artificial, blended, or synthetic fibers.

The following fabrics are recommended: denim, corduroy. For the pocket lining, we recommend using cotton or poplin.

The pants in the photo are made of denim. The fabric is medium weight and low-stretch.

The fiber content is 100% cotton. The fabric weight is 300 g/m².

The pocket lining is made of 100% cotton. The fabric weight is 120 g/m².

FABRIC AND NOTIONS REQUIREMENTS

1. Main fabric, 140 cm wide, with a directional print/nap, in meters:

Height, cm	Size	
	34	36-52
1 (154-160)	1.4	1.6
2 (162-168)	1.45	1.7
3 (170-176)	1.45	1.75
4 (178-184)	1.55	1.85

Main fabric, 150 cm wide, with a directional print/nap, in meters:

Height, cm	Size	
	34-40	42-52
1 (154-160)	1.3	1.6
2 (162-168)	1.35	1.7
3 (170-176)	1.4	1.75
4 (178-184)	1.45	1.85

Main fabric, 55" wide, with a directional print/nap, in yards:

Height, ft	Size	
	34	36-52
1 (5'1"-5'3")	1 ½	1 ¾
2 (5'4"-5'6")	1 ⅝	1 ⅞
3 (5'7"-5'9")	1 ⅝	1 ⅞
4 (5'10"-6'1")	1 ¾	2

Main fabric, 59" wide, with a directional print/nap, in yards:

Height, ft	Size	
	34-40	42-52
1 (5'1"-5'3")	1 ¾	1 ¾
2 (5'4"-5'6")	1 ½	1 ⅞
3 (5'7"-5'9")	1 ½	1 ⅞
4 (5'10"-6'1")	1 ⅝	2

2. Lining fabric, 140 cm (55") wide, for all sizes and heights — 0.3 m (3/8 yd)

IMPORTANT! When purchasing fabric, please account for shrinkage and buy 5% more than required.

3. Lightweight interfacing, knit or woven, 140 cm (55") wide, for all sizes and heights — 0.3 m (3/8 yd)
4. Stitched bias-cut fusible stay tape with stitch reinforcement, 1.5 cm (5/8") wide — 1.75 m (1 7/8 yd)
5. One metal pant zipper, 20 cm (7 7/8") long, for all sizes and heights
6. One metal stud button for jeans, 2-2.5 cm (3/4-1") in diameter
7. Eight metal rivets, 7 mm (just over 1/4") in diameter
8. Matching thread — 5 spools (1 spool for the sewing machine + 4 spools for the overlocker)
9. Matching (or contrasting) topstitching thread — 2 spools

TOOLS AND EQUIPMENT

- sewing machine for construction
- overlocker for finishing raw edges. This may be replaced with a stretch overlock stitch or a zigzag stitch on the sewing machine (overlock or zigzag stitch width 2–3 mm, stitch length 2.5 mm)
- buttonhole foot for the sewing machine
- stitch-in-the-ditch foot for the sewing machine (optional)
- hole puncher or awl
- press tool with a set of molds for installing a stud button and rivets

PATTERN PIECES LIST

1. From main fabric:

- front leg — cut 2
- back leg — cut 2
- yoke — cut 2
- slash pocket — cut 2
- patch pocket — cut 2
- watch pocket — cut 1
- left waistband — cut 2
- right waistband — cut 2
- fly shield — cut 1
- belt loops — cut 1 (5 pcs)

2. From lining fabric:

- pocket top lining — cut 2
- pocket bottom lining — cut 2

3. From interfacing:

- left waistband — cut 2
- right waistband — cut 2

IMPORTANT! Don't forget to transfer all pattern markings and notches onto the fabric.

Additionally, cut the following from interfacing:

- two strips, 3 cm (1 1/8") wide (length according to the pattern), to interface the top edge seam allowances on the patch pocket pieces
- one strip, 4 cm (1 5/8") wide (length according to the pattern), to interface the fly extension on the right front leg piece

The interfacing strips should be cut on the straight grain (parallel to the selvedge).

IMPORTANT! The pattern pieces that have the "face" inscription on them should be placed with the blank side onto the right side of fabric when cutting.

SEAM ALLOWANCES

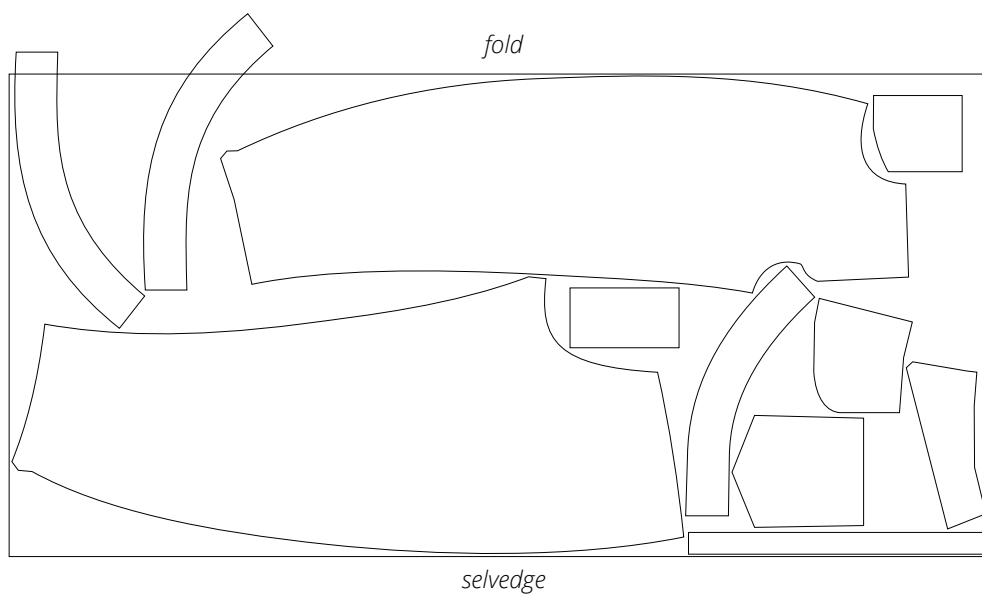
All pattern pieces include seam allowances as follows:

- garment hem allowance — 3 cm (1 1/8")
- top edge seam allowance on the patch pocket piece — 3 cm (1 1/8")
- all other edges — 1 cm (3/8")

Take this into account when laying out the pattern pieces on the fabric.

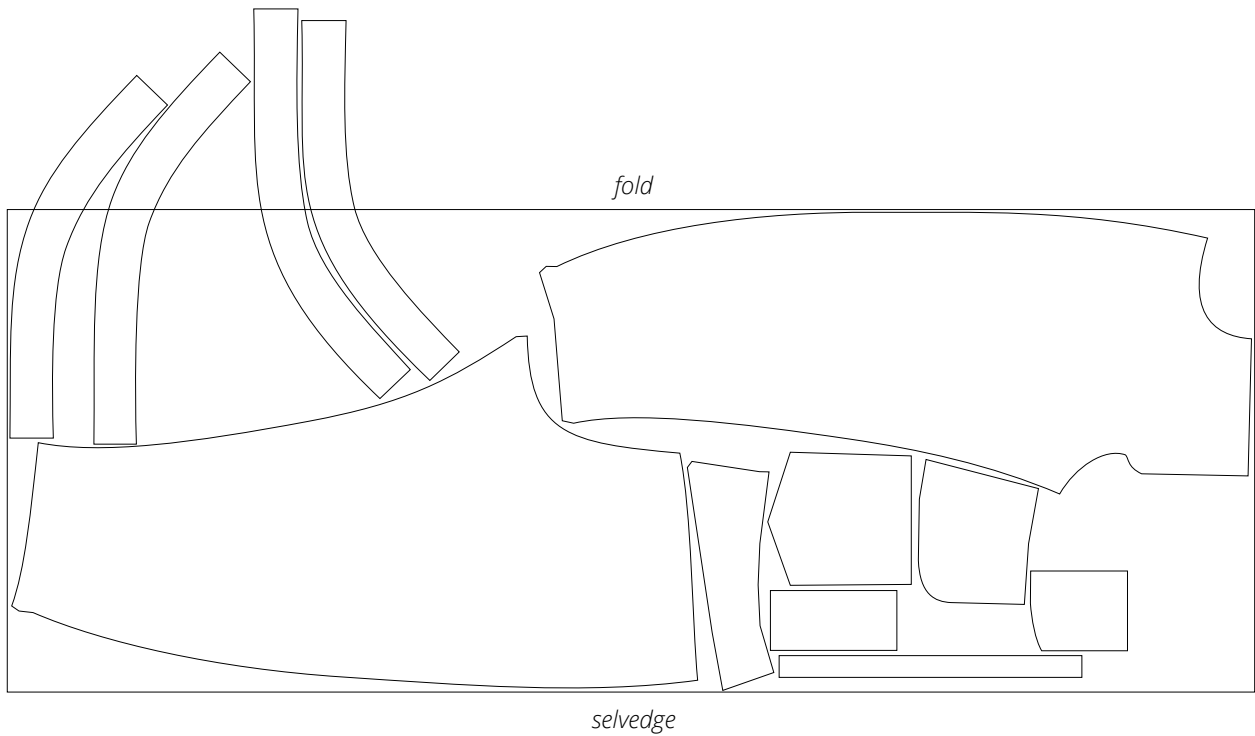
CUTTING LAYOUT

Main fabric, 140 cm (55") wide, with a directional print/nap,
cut on fold, for size 34 in all heights



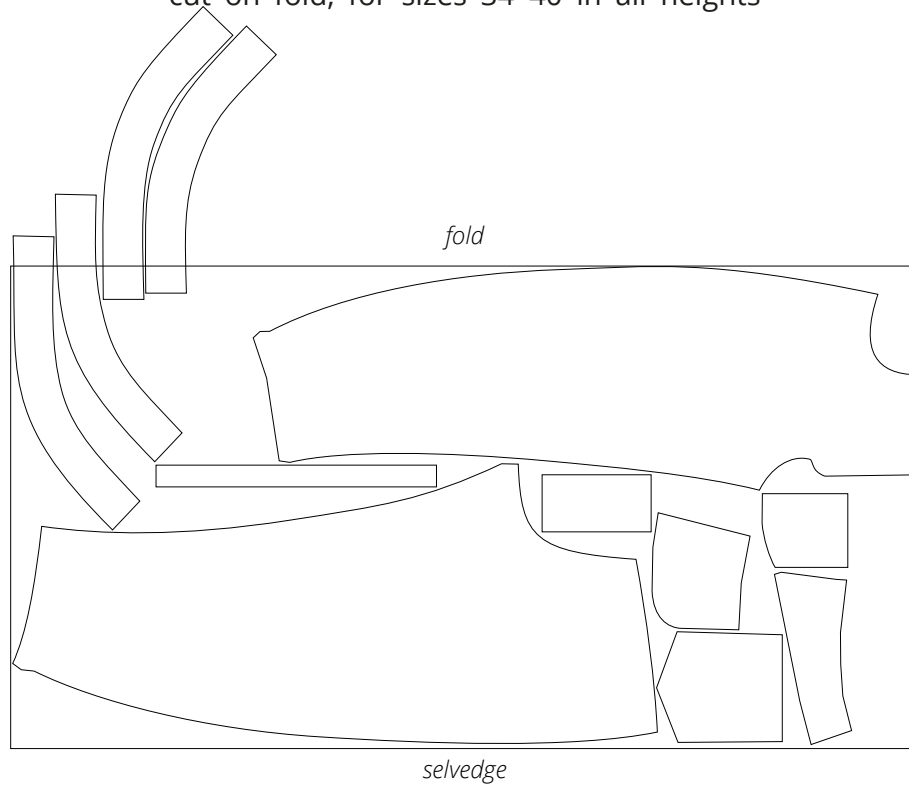
Attention! Cut only one fly shield, belt loops, and watch pocket. Cut the left and right waistband pieces on a single layer out of the leftover fabric.

Main fabric, 140 cm (55") wide, with a directional print/nap,
cut on fold, for sizes 36–52 in all heights



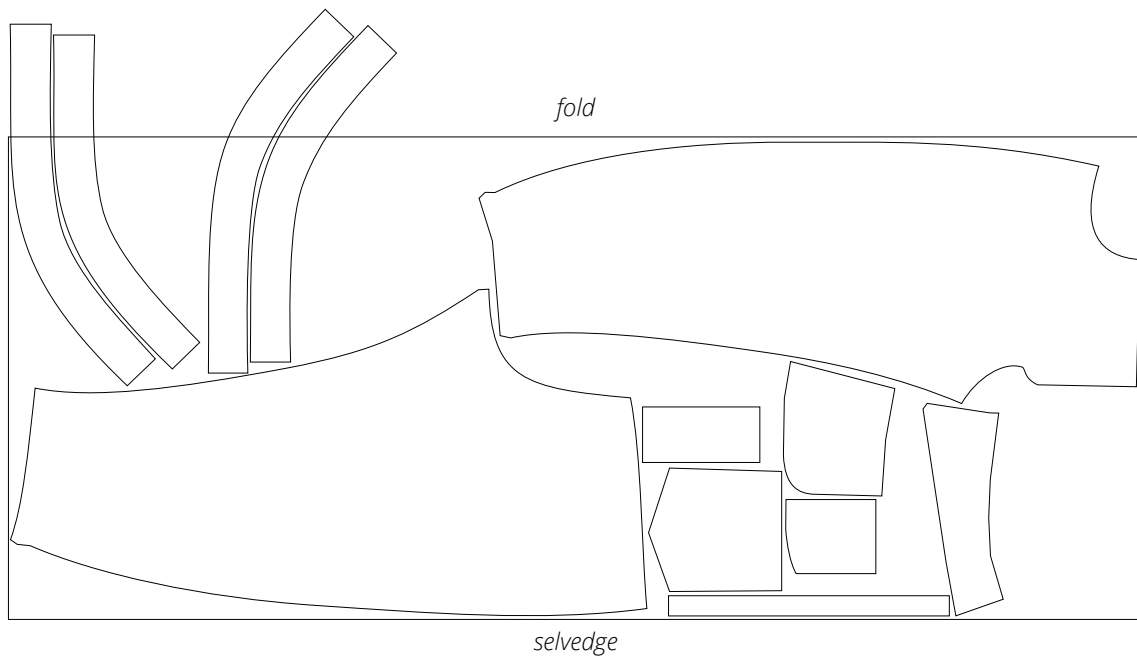
Attention! Cut only one fly shield, belt loops, and watch pocket. Cut the left and right waistband pieces on a single layer out of the leftover fabric.

Main fabric, 150 cm (59") wide, with a directional print/nap,
cut on fold, for sizes 34–40 in all heights



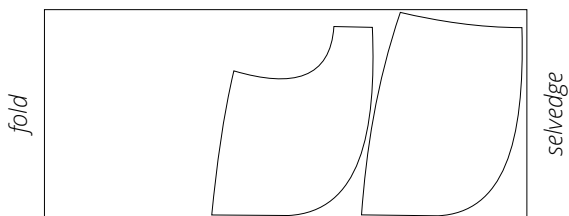
Attention! Cut only one fly shield, belt loops, and watch pocket. Cut the left and right waistband pieces on a single layer out of the leftover fabric.

Main fabric, 150 cm (59") wide, with a directional print/nap,
cut on fold, for sizes 42–52 in all heights

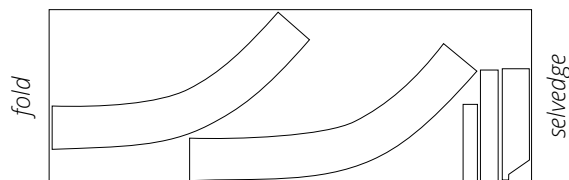


Attention! Cut only one fly shield, belt loops, and watch pocket. Cut the left and right waistband pieces on a single layer out of the leftover fabric.

Lining fabric, 140 cm (55") wide,
with a directional print, cut on
fold, for all sizes in all heights

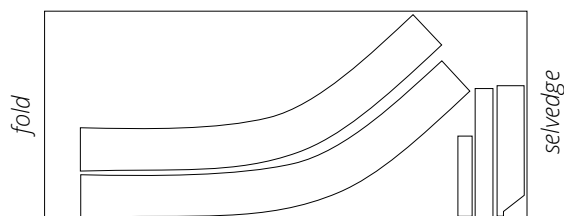


Interfacing, 140 cm (55") wide,
cut on fold, for sizes 34-36
in all heights



Attention! Cut only one fly extension and
watch pocket interfacing strip.

Interfacing, 140 cm (55") wide,
cut on fold, for sizes 38-52
in all heights



Attention! Cut only one fly extension and
watch pocket interfacing strip.

READY? LET'S GET SEWING!



Fold the pressed seam allowance to the right side along the foldline, align and pin the side edges.



Machine-stitch at 8 mm (just under 3/8") from the edge, accounting for the fabric thickness. Backstitch at the beginning and end of the seam. Press the seams flat.