

FROM THE FOUNDER OF THE #VIKISEWS BRAND

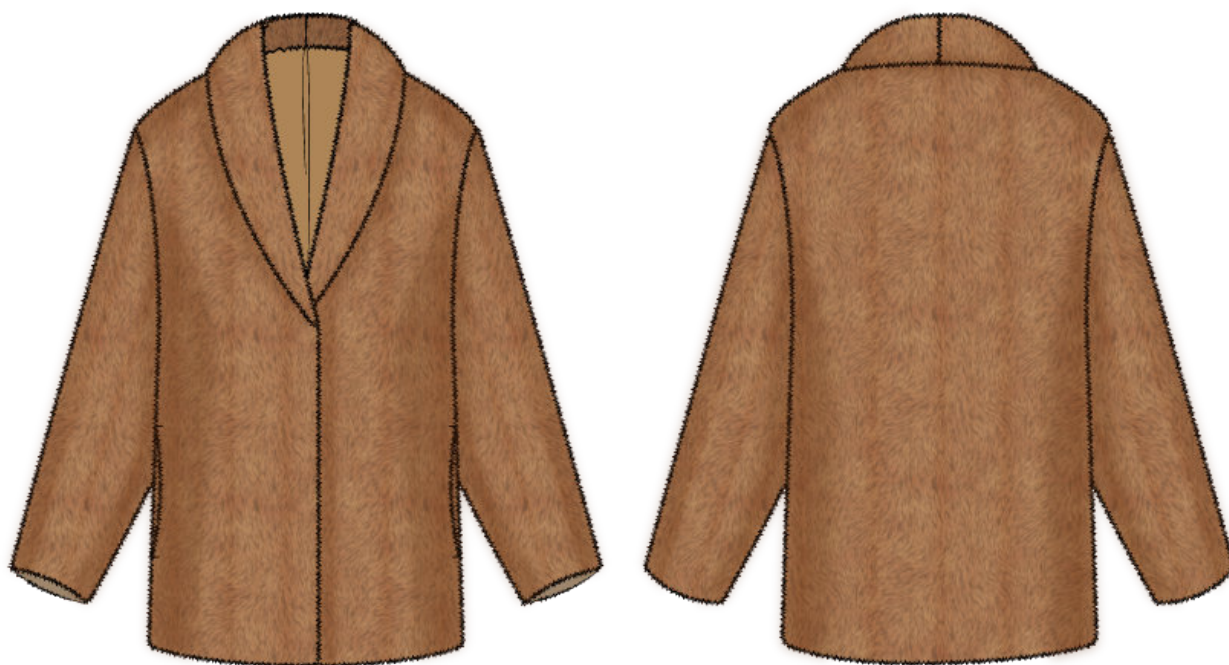


Back in 2016, when I was working on my first set of sewing instructions, I was trying to write them in such a way that even a complete beginner could easily understand and use them to create their very first garment. These instructions laid the foundation for the Vikisews brand, its vision and its mission. I wanted to create modern patterns with the utmost detailed and clear instructions.

Now, with each new collection we are constantly improving our instructions, amending them and adding more relevant details. By the time the final product reaches you, our drafters, correctors, and editors would have spent weeks perfecting every word and every photograph. If you compile a few of our instructions together, you will get a sewing manual that will assist you in sewing all kinds of garments at any difficulty level.

And I would be very happy if these instructions helped you to turn your hobby into a lifelong passion... Enjoy the process! Create your ultimate dream wardrobe! Wear your garments proudly for years to come!

If you have any questions, please contact us at info@vikisews.com — we are always there to help.



FIDAN PATTERN DESCRIPTION

Fidan is a semi-fitted, straight-cut fur jacket fully finished with a padded lining. The front bust darts are transferred to the shoulder seams. The jacket has dropped shoulders, a shawl collar, and side seam pockets. The semi-fitted one-piece sleeves are long. Fidan has a hidden snap closure at the center front and is below-hip length.



IMPORTANT!

The contents of this pattern are copyright protected and belong exclusively to Vikisews. You may use Vikisews patterns for personal use. It is prohibited to share Vikisews patterns and instructions with third parties, as well as to publish patterns and instructions online for public access. **Non-compliance with the mentioned rules is a violation of the US copyright law and may result in civil liability and criminal prosecution.**

You may use Vikisews patterns for commercial use, to sew custom-made garments and/or create fashion collections, on the condition that the patterns are solely used in a manufacturing setting and are not further shared with individuals.

TOTAL EASE ALLOWANCE

	Bust ease	Waistline ease	Hipline ease	Upper arm ease
cm	36–25.6	55.2–44.8	27.7–27.3	16.5–12.7
inches	4 1/8–10 1/8	21 3/4–17 5/8	10 7/8–10 3/4	6 1/2–5

GARMENT LENGTH, SLEEVE LENGTH

Height, cm	Center back length, cm	Sleeve length including shoulder width, cm
1 (154–160)	70.7–71.3	72.7–75.9
2 (162–168)	74.2–74.8	74.6–77.8
3 (170–176)	78.7–79.3	76.5–79.7
4 (178–184)	82.7–83.3	78.4–81.6

Height, ft	Center back length, in	Sleeve length including shoulder width, in
1 (5'1"–5'3")	27 7/8–28 1/8	28 5/8–29 7/8
2 (5'4"–5'6")	29 1/4–29 1/2	29 3/8–30 5/8
3 (5'7"–5'9")	31–31 1/4	30 1/8–31 3/8
4 (5'10"–6'1")	32 1/2–32 3/4	30 7/8–32 1/8

SUGGESTED FABRIC

To sew this jacket, choose medium-weight, soft, non-stretch coating fabrics made of natural, artificial, synthetic fibers, or blends.

The following fabrics are recommended: faux fur on a knit or woven backing, napped coating fabrics.

For the lining, choose lining fabrics made from artificial fibers (viscose), blends (viscose + elastane, viscose + polyester), or synthetics (polyester, polyester + elastane).

For the insulation layer, we recommend Juli-Tex Thermo with the weight of 50–100 g/m².

Attention! We recommend using medium pile faux fur (pile height up to 13 mm [1/2"]).

The fur jacket in the photo is made of faux fur with a knit backing. The fabric is medium-weight, soft, and without stretch. The fiber content is 100% polyester. The fabric weight is 650 g/m². The lining is a blend of 55% viscose and 45% polyester. The fabric weight is 100 g/m².

The insulation is Juli-Tex Thermo, 60 g/m².

FABRIC AND NOTIONS REQUIREMENTS

1. Main fabric, 140 cm wide, with a directional print/nap, in meters:

Height, cm	Size				
	XS	S	M	L	XL
1 (154–160)	1.8	1.8	1.85	2.1	2.15
2 (162–168)	1.85	1.9	1.9	2.2	2.25
3 (170–176)	1.95	1.95	2	2.3	2.35
4 (178–184)	2	2.05	2.1	2.35	2.4

Main fabric, 55" wide, with a directional print/nap, in yards:

Height, ft	Size				
	XS	S	M	L	XL
1 (5'1"–5'3")	2	2	2	2 1/4	2 3/8
2 (5'4"–5'6")	2	2 1/8	2 1/8	2 3/8	2 1/2
3 (5'7"–5'9")	2 1/8	2 1/8	2 1/8	2 1/2	2 5/8
4 (5'10"–6'1")	2 1/8	2 1/4	2 1/4	2 5/8	2 5/8

2. Main fabric, 180 cm wide, with a directional print/nap, in meters:

Height, cm	Size			
	XS	S-M	L	XL
1 (154–160)	1.4	1.45	1.45	1.8
2 (162–168)	1.45	1.5	1.5	1.85
3 (170–176)	1.55	1.55	1.55	1.95
4 (178–184)	1.6	1.6	1.65	2

Main fabric, 71" wide, with a directional print/nap, in yards:

Height, ft	Size			
	XS	S-M	L	XL
1 (5'1"–5'3")	1 1/2	1 5/8	1 5/8	2
2 (5'4"–5'6")	1 5/8	1 5/8	1 5/8	2
3 (5'7"–5'9")	1 3/4	1 3/4	1 3/4	2 1/8
4 (5'10"–6'1")	1 3/4	1 3/4	1 3/4	2 1/8

3. Lining fabric, 140 cm wide, with a directional print, in meters:

Height, cm	Size		
	XS-S	M	L-XL
1 (154–160)	1.35	1.45	1.5
2 (162–168)	1.45	1.5	1.55
3 (170–176)	1.5	1.55	1.6
4 (178–184)	1.55	1.6	1.65

Lining fabric, 55" wide, with a directional print, in yards:

Height, ft	Size		
	XS-S	M	L-XL
1 (5'1"–5'3")	1 1/2	1 5/8	1 5/8
2 (5'4"–5'6")	1 5/8	1 5/8	1 3/4
3 (5'7"–5'9")	1 5/8	1 3/4	1 3/4
4 (5'10"–6'1")	1 3/4	1 3/4	1 3/4

4. Juli-Tex Thermo insulation, 150 cm wide, in meters:

Height, cm	Size		
	XS	S-M	L-XL
1 (154–160)	1.35	1.35	1.4
2 (162–168)	1.4	1.4	1.45
3 (170–176)	1.45	1.5	1.55
4 (178–184)	1.5	1.55	1.6

Juli-Tex Thermo insulation, 59" wide, in yards:

Height, ft	Size		
	XS	S-M	L-XL
1 (5'1"–5'3")	1 1/2	1 1/2	1 1/2
2 (5'4"–5'6")	1 1/2	1 1/2	1 5/8
3 (5'7"–5'9")	1 5/8	1 5/8	1 3/4
4 (5'10"–6'1")	1 5/8	1 3/4	1 3/4

5. Interfacing, knit or woven, 140 cm wide, 40 g/m², in meters:

Height, cm	Size				
	XS	S	M	L	XL
1 (154–160)	1	1	1.05	1.05	1.1
2 (162–168)	1.05	1.05	1.1	1.1	1.15
3 (170–176)	1.05	1.1	1.1	1.15	1.15
4 (178–184)	1.1	1.15	1.15	1.2	1.2

Interfacing, knit or woven, 55" wide, 40 g/m², in yards:

Height, ft	Size				
	XS	S	M	L	XL
1 (5'1"–5'3")	1 1/8	1 1/8	1 1/8	1 1/8	1 1/4
2 (5'4"–5'6")	1 1/8	1 1/8	1 1/4	1 1/4	1 1/4
3 (5'7"–5'9")	1 1/8	1 1/4	1 1/4	1 1/4	1 1/4
4 (5'10"–6'1")	1 1/4	1 1/4	1 1/4	1 1/4	1 1/4

6. Stitched bias-cut fusible stay tape with stitch reinforcement, 1.5 cm (5/8") wide — 3–3.7 m (3 1/4–4 yd).
7. Three sew-on snaps, 1.5–2 cm (5/8–3/4") in diameter.
8. Matching thread — 1 spool for the sewing machine.

IMPORTANT! When purchasing fabric, please account for shrinkage and buy 5% more than required.

TOOLS AND EQUIPMENT

- sewing machine for construction
- stitch-in-the-ditch foot for the sewing machine (optional)

PATTERN PIECES LIST

1. From main fabric:

- front — cut 2
- back — cut 1 on fold
- sleeve — cut 2
- front facing — cut 2

2. From lining fabric:

- front lining — cut 2
- back lining — cut 1 on fold
- sleeve lining — cut 2
- pocket lining — cut 4

3. From insulation:

- front lining — cut 2
- back lining — cut 1 on fold
- sleeve lining — cut 2

IMPORTANT! Don't forget to transfer all pattern markings and notches onto the fabric.

4. From interfacing:

- front facing — cut 2

Additionally, cut the following from interfacing:

- four strips (length according to the pattern) to interface the pocket opening area.
- strips to interface the hem allowance on the front, back, and sleeve pieces (length according to the pattern).

The interfacing strips should be cut on the straight grain (parallel to the selvedge).

SEAM ALLOWANCES

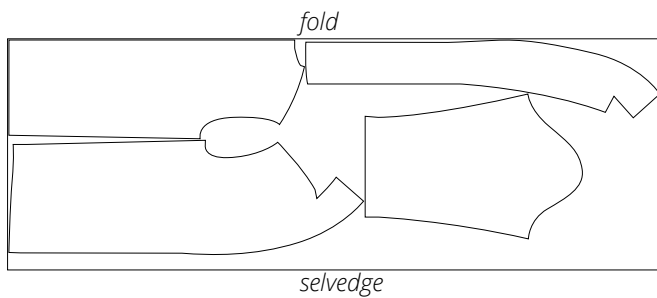
All pattern pieces include seam allowances as follows:

- garment hem allowance — 4 cm (1 5/8")
- sleeve hem allowance — 4 cm (1 5/8")
- all other edges — 1 cm (3/8").

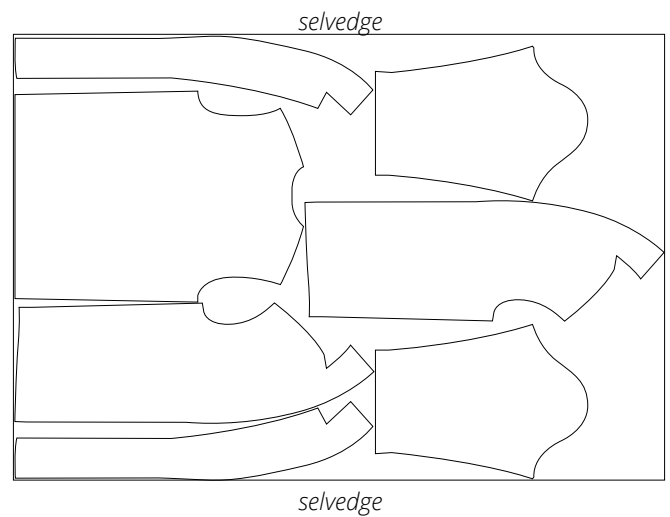
Take this into account when laying out the pattern pieces on the fabric.

CUTTING LAYOUT

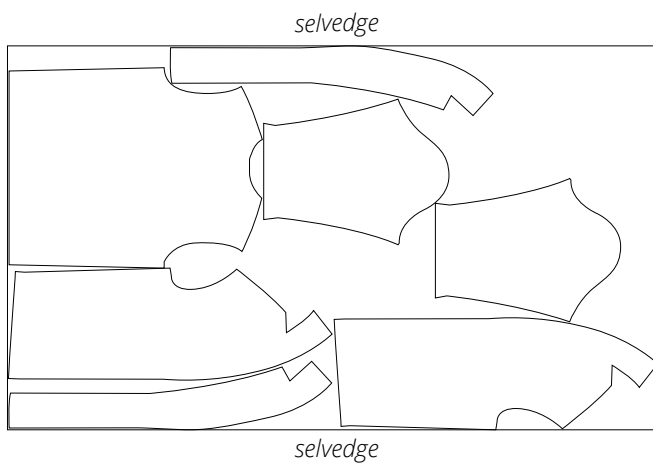
Main fabric, 140 cm (55") wide, with a directional print/nap, cut on fold, for size XS in all heights



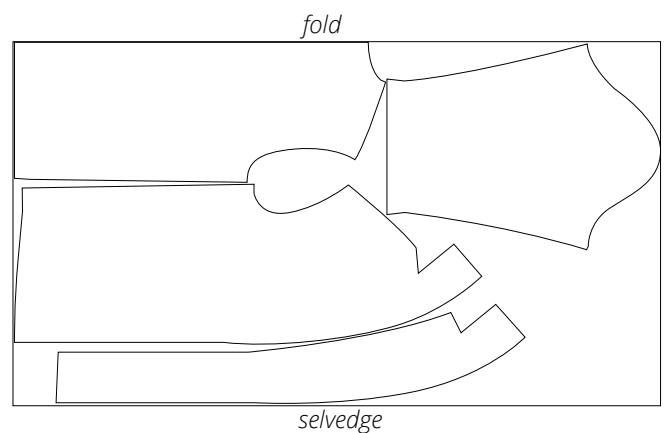
Main fabric, 140 cm (55") wide, with a directional print/nap, cut on a single layer, for sizes S-M in all heights



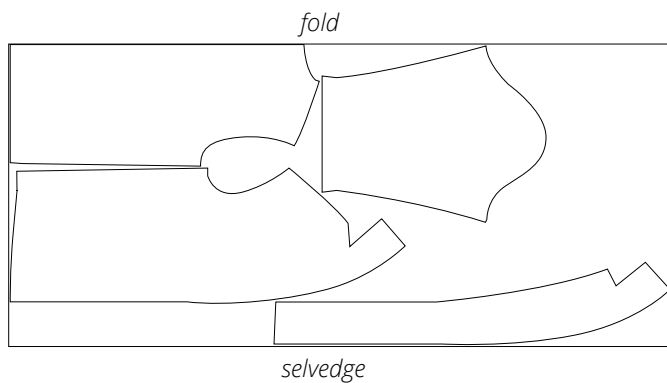
Main fabric, 140 cm (55") wide, with a directional print/nap, cut on a single layer, for sizes L-XL in all heights



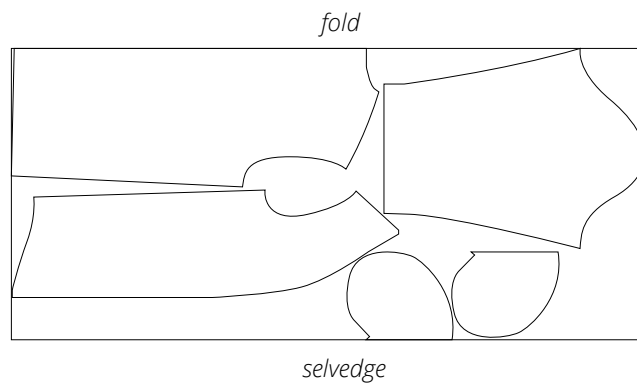
Main fabric, 180 cm (71") wide, with a directional print/nap, cut on fold, for sizes XS-L in all heights.



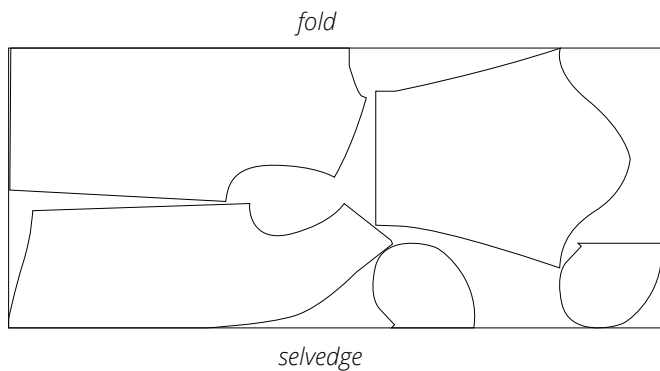
Main fabric, 180 cm (71") wide, with a directional print/nap, cut on fold, for size XL in all heights.



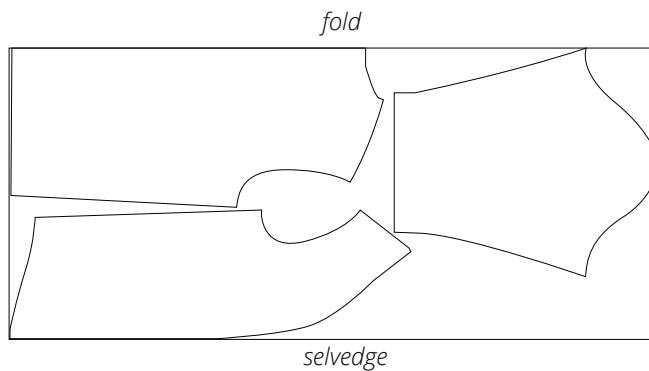
Lining fabric, 140 cm (55") wide, with a directional print, cut on fold, for sizes XS-S in all heights



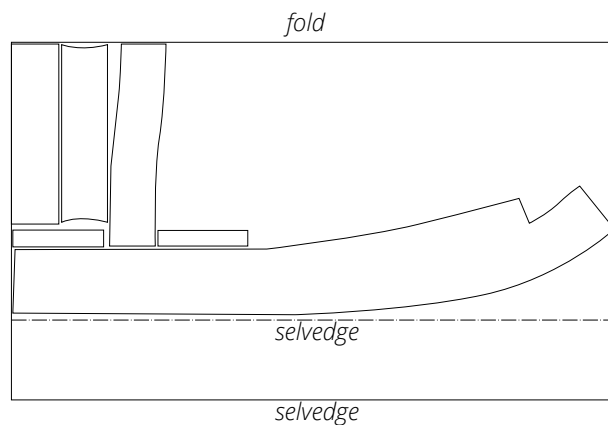
Lining fabric, 140 cm (55") wide, with a directional print, cut on fold, for sizes M-XL in all heights



Insulation, 140 cm (55") wide, cut on fold, for all sizes in all heights



Interfacing, 140 cm (55") wide, cut on a partial fold, for all sizes in all heights



READY? LET'S GET SEWING!



Cut the dart open in the middle, stopping about 3–4 cm (1 1/8–1 5/8") short of the dart point.

Trim the pile from the dart seam allowances to reduce the bulk.



Press the dart seam allowances open.

If the pile is long, tuck it in between the pieces before aligning the edges.

If your fabric has a long, stiff and/or dense pile, trim the pile off about 1 cm (3/8") along all the edges. This will reduce the bulk and make it easier to align the edges before pinning and sewing.



Place the pocket lining pieces right sides together with the front and back pieces. Align the edges, match the notches, and pin. Machine-stitch at 8 mm (just under 3/8") from the edge. Backstitch at the beginning and end of the seam.