

# FROM THE FOUNDER OF THE #VIKISEWS BRAND

---

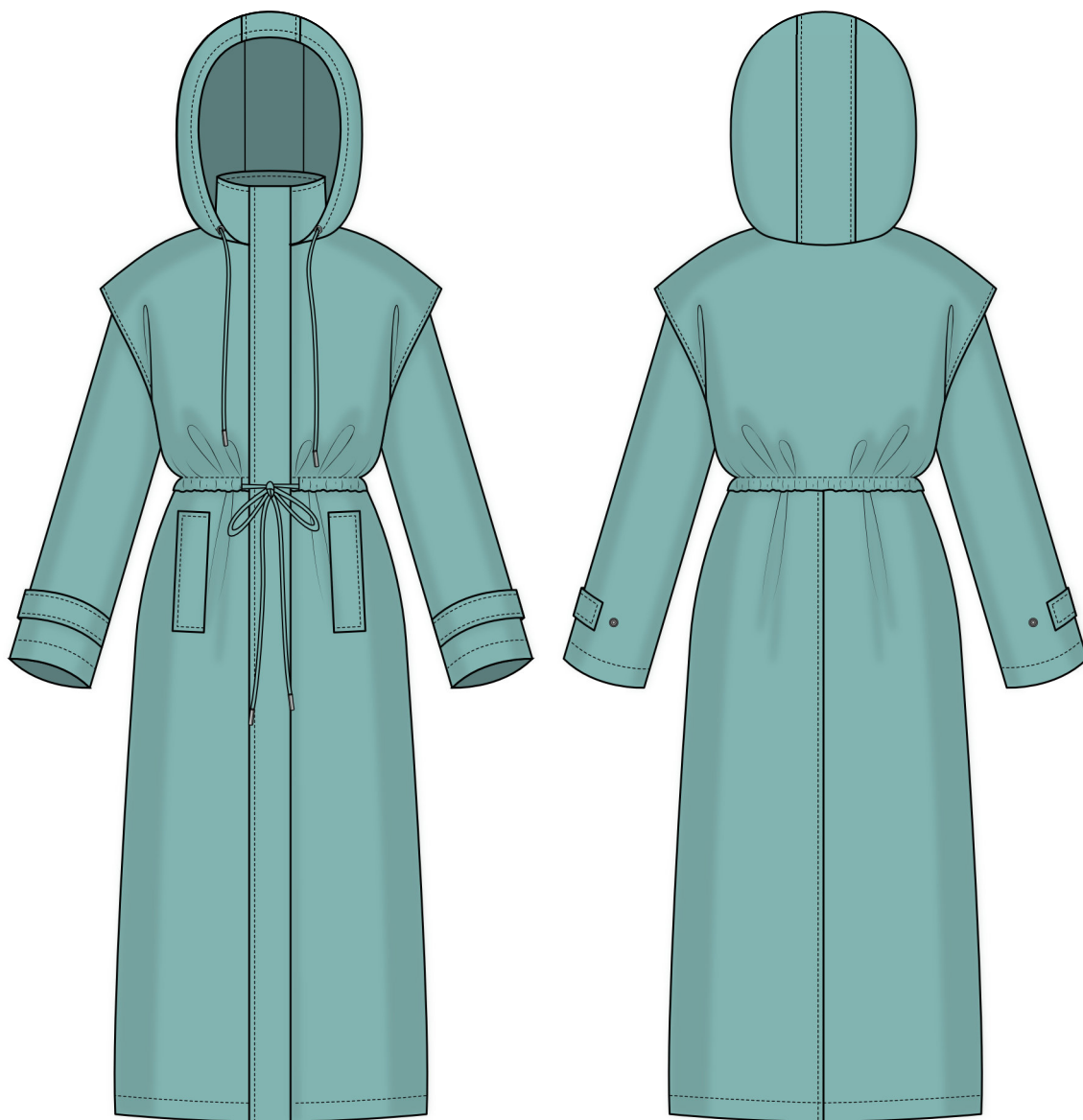


Back in 2016, when I was working on my first set of sewing instructions, I was trying to write them in such a way that even a complete beginner could easily understand and use them to create their very first garment. These instructions laid the foundation for the Vikisews brand, its vision and its mission. I wanted to create modern patterns with the utmost detailed and clear instructions.

Now, with each new collection we are constantly improving our instructions, amending them and adding more relevant details. By the time the final product reaches you, our drafters, correctors, and editors would have spent weeks perfecting every word and every photograph. If you compile a few of our instructions together, you will get a sewing manual that will assist you in sewing all kinds of garments at any difficulty level.

And I would be very happy if these instructions helped you to turn your hobby into a lifelong passion... Enjoy the process! Create your ultimate dream wardrobe! Wear your garments proudly for years to come!

If you have any questions, please contact us at [info@vikisews.com](mailto:info@vikisews.com) — we are always there to help.



## THALASSA PATTERN DESCRIPTION

---

Thalassa is a loose-fitting, padded raincoat with a straight silhouette. The front and back feature free-hanging lined yokes that have a casing threaded with a tie at the bottom. There are welt pockets at the front and a center seam at the back. The raincoat features an extended shoulder line and wide shirt sleeves. The tall stand collar is completed with a three-piece hood. The hood has a casing threaded with a tie. The raincoat is lined and closes with a zipper and snaps set on the inner side of the applied placket. Thalassa is below-knee length.



## IMPORTANT!

---

The contents of this pattern are copyright protected and belong exclusively to Vikisews. You may use Vikisews patterns for personal use. It is prohibited to share Vikisews patterns and instructions with third parties, as well as to publish patterns and instructions online for public access. **Non-compliance with the mentioned rules is a violation of the US copyright law and may result in civil liability and criminal prosecution.**

You may use Vikisews patterns for commercial use, to sew custom-made garments and/or create fashion collections, on the condition that the patterns are solely used in a manufacturing setting and are not further shared with individuals.

# TOTAL EASE ALLOWANCE

|        | Bust ease           | Waistline ease                     | Hipline ease                       | Upper arm ease                   |
|--------|---------------------|------------------------------------|------------------------------------|----------------------------------|
| cm     | 48.2–40.2           | 66.2–56.7                          | 44.1–32.7                          | 24.5–19.9                        |
| inches | 19–15 $\frac{7}{8}$ | 26 $\frac{1}{8}$ –22 $\frac{3}{8}$ | 17 $\frac{3}{8}$ –12 $\frac{7}{8}$ | 9 $\frac{5}{8}$ –7 $\frac{7}{8}$ |

# GARMENT LENGTH, SLEEVE LENGTH

| Height, cm  | Center back length, cm | Sleeve length including shoulder width, cm |
|-------------|------------------------|--|
| 1 (154–160) | 112.6–115.1            | 72.4–75.4                                  |
| 2 (162–168) | 116.6–119.8            | 74.4–77.4                                  |
| 3 (170–176) | 120.5–123.8            | 76.4–79.4                                  |
| 4 (178–184) | 124.5–127.8            | 78.4–81.4                                  |

| Height, ft     | Center back length, in             | Sleeve length including shoulder width, in |
|----------------|------------------------------------|--|
| 1 (5'1"–5'3")  | 44 $\frac{3}{8}$ –45 $\frac{3}{8}$ | 28 $\frac{1}{2}$ –29 $\frac{5}{8}$         |
| 2 (5'4"–5'6")  | 45 $\frac{7}{8}$ –47 $\frac{1}{8}$ | 29 $\frac{1}{4}$ –30 $\frac{1}{2}$         |
| 3 (5'7"–5'9")  | 47 $\frac{1}{2}$ –48 $\frac{3}{4}$ | 30 $\frac{1}{8}$ –31 $\frac{1}{4}$         |
| 4 (5'10"–6'1") | 49–50 $\frac{3}{8}$                | 30 $\frac{7}{8}$ –32                       |

# SUGGESTED FABRIC

To sew this raincoat, choose medium-weight, pliable, soft, non-stretch or low-stretch, and opaque outerwear fabrics made of natural fibers, artificial fibers, blends, or synthetics.

Recommended fabrics: gabardine, dewspo, outerwear fabrics, raincoat fabrics, taslan, cotton.

For the lining, use lining fabrics made of artificial fibers, blends, or synthetics.

For the garment insulation, we recommend 100 g/m<sup>2</sup> materials. For the yoke insulation, use 50–60 g/m<sup>2</sup> options such as Alp lux, Iso soft, Thinsulate, or Juli-Tex Thermo.

The raincoat in the photo is made of water-repellent raincoat fabric. The fabric is medium weight, pliable, and non-stretch. The fiber content is 100% polyamide. The fabric weight is 80 g/m<sup>2</sup>.

The fiber content of the lining is 45% viscose and 55% polyester. The fabric weight is 100 g/m².

The garment insulation is Juli-Tex Thermo, 100 g/m².

The yoke insulation is Juli-Tex Thermo, 60 g/m².

# FABRIC AND NOTIONS REQUIREMENTS

1. Main fabric, 150 cm wide, with a directional print/nap, in meters:

| Height, cm  | Size |      |      |     |      |
|-------------|------|------|------|-----|------|
|             | XS   | S    | M    | L   | XL   |
| 1 (154–160) | 3.7  | 3.8  | 3.85 | 3.9 | 3.95 |
| 2 (162–168) | 3.8  | 3.85 | 3.95 | 4   | 4.05 |
| 3 (170–176) | 3.9  | 4    | 4.05 | 4.1 | 4.15 |
| 4 (178–184) | 4    | 4.05 | 4.15 | 4.2 | 4.25 |

Main fabric, 59" wide, with a directional print/nap, in yards:

| Height, ft     | Size  |       |       |       |       |
|----------------|-------|-------|-------|-------|-------|
|                | XS    | S     | M     | L     | XL    |
| 1 (5'1"–5'3")  | 4     | 4 1⁄8 | 4 1⁄4 | 4 1⁄4 | 4 3⁄8 |
| 2 (5'4"–5'6")  | 4 1⁄8 | 4 1⁄4 | 4 3⁄8 | 4 3⁄8 | 4 3⁄8 |
| 3 (5'7"–5'9")  | 4 1⁄4 | 4 3⁄8 | 4 3⁄8 | 4 1⁄2 | 4 1⁄2 |
| 4 (5'10"–6'1") | 4 3⁄8 | 4 3⁄8 | 4 1⁄2 | 4 5⁄8 | 4 5⁄8 |

2. Lining fabric, 140 cm wide, with a directional print, in meters:

| Height, cm  | Size |      |      |
|-------------|------|------|------|
|             | XS-S | M-L  | XL   |
| 1 (154–160) | 2.85 | 2.9  | 3.3  |
| 2 (162–168) | 2.9  | 2.95 | 3.4  |
| 3 (170–176) | 3    | 3.05 | 3.55 |
| 4 (178–184) | 3.1  | 3.15 | 3.65 |

Lining fabric, 55" wide, with a directional print, in yards:

| Height, ft     | Size            |                 |                 |
|----------------|-----------------|-----------------|-----------------|
|                | XS-S            | M-L             | XL              |
| 1 (5'1"–5'3")  | 3 $\frac{1}{8}$ | 3 $\frac{1}{8}$ | 3 $\frac{5}{8}$ |
| 2 (5'4"–5'6")  | 3 $\frac{1}{8}$ | 3 $\frac{1}{4}$ | 3 $\frac{3}{4}$ |
| 3 (5'7"–5'9")  | 3 $\frac{1}{4}$ | 3 $\frac{3}{8}$ | 3 $\frac{7}{8}$ |
| 4 (5'10"–6'1") | 3 $\frac{3}{8}$ | 3 $\frac{1}{2}$ | 4               |

3. Insulation 100, 150 cm wide, cut in one direction, in meters:

| Height, cm  | Size |      |     |      |
|-------------|------|------|-----|------|
|             | XS   | S    | M-L | XL   |
| 1 (154–160) | 2.4  | 2.45 | 2.8 | 2.85 |
| 2 (162–168) | 2.45 | 2.5  | 2.9 | 2.95 |
| 3 (170–176) | 2.55 | 2.6  | 3   | 3.05 |
| 4 (178–184) | 2.65 | 2.7  | 3.1 | 3.15 |

Insulation 100, 59" wide, cut in one direction, in yards:

| Height, ft     | Size            |                 |                 |                 |
|----------------|-----------------|-----------------|-----------------|-----------------|
|                | XS              | S               | M-L             | XL              |
| 1 (5'1"–5'3")  | 2 $\frac{5}{8}$ | 2 $\frac{5}{8}$ | 3               | 3 $\frac{1}{8}$ |
| 2 (5'4"–5'6")  | 2 $\frac{5}{8}$ | 2 $\frac{3}{4}$ | 3 $\frac{1}{8}$ | 3 $\frac{1}{4}$ |
| 3 (5'7"–5'9")  | 2 $\frac{3}{4}$ | 2 $\frac{7}{8}$ | 3 $\frac{1}{4}$ | 3 $\frac{3}{8}$ |
| 4 (5'10"–6'1") | 2 $\frac{7}{8}$ | 3               | 3 $\frac{3}{8}$ | 3 $\frac{1}{2}$ |

4. Insulation 50, 150 cm wide, cut in one direction, in meters:

| Height, cm  | Size |      |      |
|-------------|------|------|------|
|             | XS-S | M    | L-XL |
| 1 (154–160) | 0.55 | 0.55 | 0.75 |
| 2 (162–168) | 0.55 | 0.55 | 0.75 |
| 3 (170–176) | 0.55 | 0.6  | 0.75 |
| 4 (178–184) | 0.55 | 0.6  | 0.8  |

Insulation 100, 59" wide, cut in one direction, in yards:

| Height, ft     | Size          |               |
|----------------|---------------|---------------|
|                | XS-M          | L-XL          |
| 1 (5'1"–5'3")  | $\frac{5}{8}$ | $\frac{7}{8}$ |
| 2 (5'4"–5'6")  | $\frac{5}{8}$ | $\frac{7}{8}$ |
| 3 (5'7"–5'9")  | $\frac{5}{8}$ | $\frac{7}{8}$ |
| 4 (5'10"–6'1") | $\frac{5}{8}$ | $\frac{7}{8}$ |

**IMPORTANT!** When purchasing fabric, please account for shrinkage and buy 5% more than required.

5. One metal zipper, in centimeters:

| Height, cm  | Size |      |
|-------------|------|------|
|             | XS-M | L-XL |
| 1 (154–160) | 75   | 80   |
| 2 (162–168) | 80   | 85   |
| 3 (170–176) | 85   | 90   |
| 4 (178–184) | 90   | 95   |

One metal zipper, in inches:

| Height, ft     | Size             |                  |
|----------------|------------------|------------------|
|                | XS-M             | L-XL             |
| 1 (5'1"–5'3")  | 29 $\frac{1}{2}$ | 31 $\frac{1}{2}$ |
| 2 (5'4"–5'6")  | 31 $\frac{1}{2}$ | 33 $\frac{1}{2}$ |
| 3 (5'7"–5'9")  | 33 $\frac{1}{2}$ | 35 $\frac{3}{8}$ |
| 4 (5'10"–6'1") | 35 $\frac{3}{8}$ | 37 $\frac{3}{8}$ |

6. Fourteen S-spring set-in snaps (+/- two spare ones), 12 mm (1/2") in diameter

7. Fourteen gaskets for the cap part of the snaps

8. Four grommets, 5 mm (just under 1/4") in diameter

9. Four drawstring tips

10. Matching thread — 2 spools

11. Matching topstitching thread – 2 spools

# TOOLS AND EQUIPMENT

---

- sewing machine for construction
- stitch-in-the-ditch foot for the sewing machine (optional)
- one-sided foot for attaching the zipper
- teflon or walking foot for the sewing machine
- elastic threader (may be replaced with a safety pin)
- hole puncher or awl
- press tool and molds for installing grommets and snaps

## PATTERN PIECES LIST

---

### 1. From main fabric:

- front — cut 2
- back — cut 2
- front yoke — cut 2
- back yoke — cut 1 on fold
- sleeve — cut 2
- sleeve tab — cut 4
- stand collar — cut 2
- hood side panel — cut 4
- hood center panel — cut 2
- front yoke armscye facing — cut 2
- back yoke armscye facing — cut 2
- front facing — cut 2
- back neck facing — cut 1 on fold
- welt — cut 2
- pocket facing — cut 2
- pocket reinforcement — cut 2
- top placket — cut 2
- bottom placket — cut 2
- yoke casing tie — cut 2
- hood casing tie — cut 2

**Additionally, cut the following from the main fabric:**

- four 2×2 cm (3/4×3/4") square pieces to reinforce the grommet placement on the hood side panels and front yokes

### 2. From lining fabric:

- front lining — cut 2
- back lining — cut 1 on fold
- sleeve lining — cut 2
- front yoke lining — cut 2
- back yoke lining — cut 1 on fold
- pocket top lining — cut 2
- pocket bottom lining — cut 2

**IMPORTANT!** Don't forget to transfer all pattern markings and notches onto the fabric.

### 3. From insulation (Alpolux):

- front — cut 2
- back — cut 2
- front yoke — cut 2 (50)
- back yoke — cut 1 on fold (50)
- sleeve — cut 2
- sleeve tab — cut 2
- stand collar — cut 1
- hood side panel — cut 2
- hood center panel — cut 1
- welt— cut 2 (1/2 of the width)
- top placket — cut 1



# SEAM ALLOWANCES

---

All pattern pieces include seam allowances as follows:

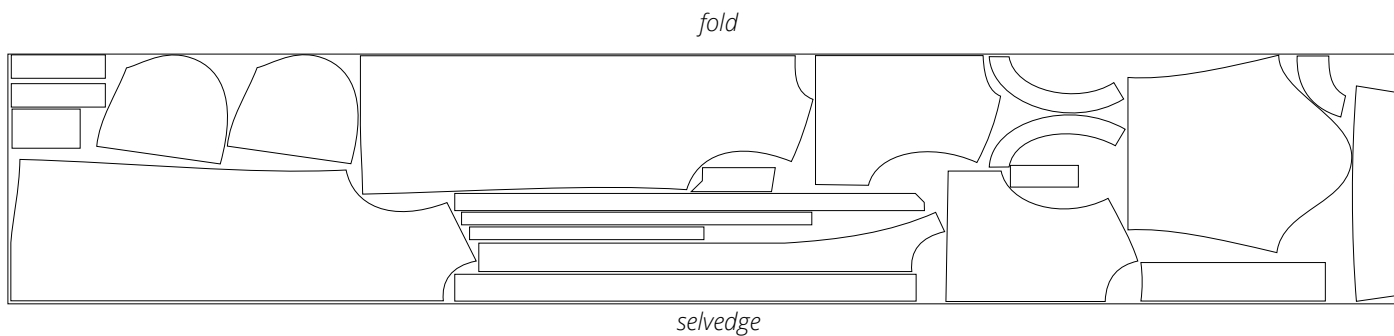
- garment hem allowance — 4 cm (1 5/8")
- sleeve hem allowance — 4 cm (1 5/8")
- pocket lining curved edges — 1.5 cm (5/8")
- all other edges — 1 cm (3/8")

Take this into account when laying out the pattern pieces on the fabric.

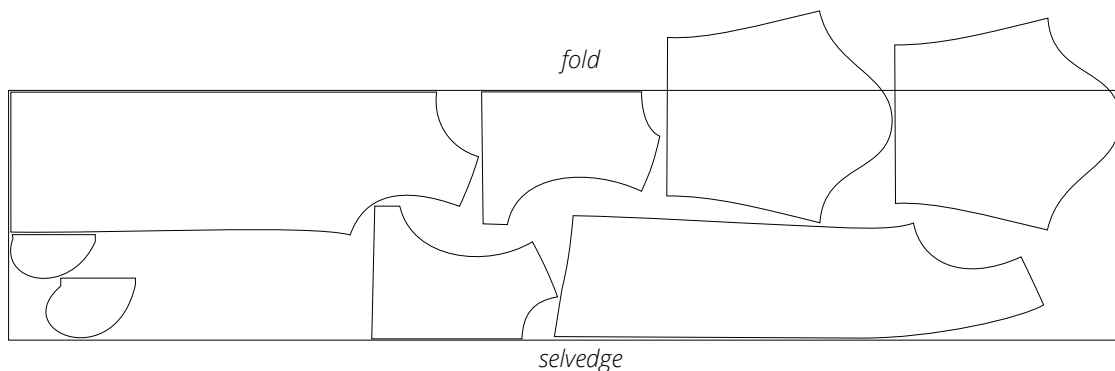
# CUTTING LAYOUT

---

Main fabric, 150 cm (59") wide, with a directional print/nap,  
cut on fold, for all sizes in all heights

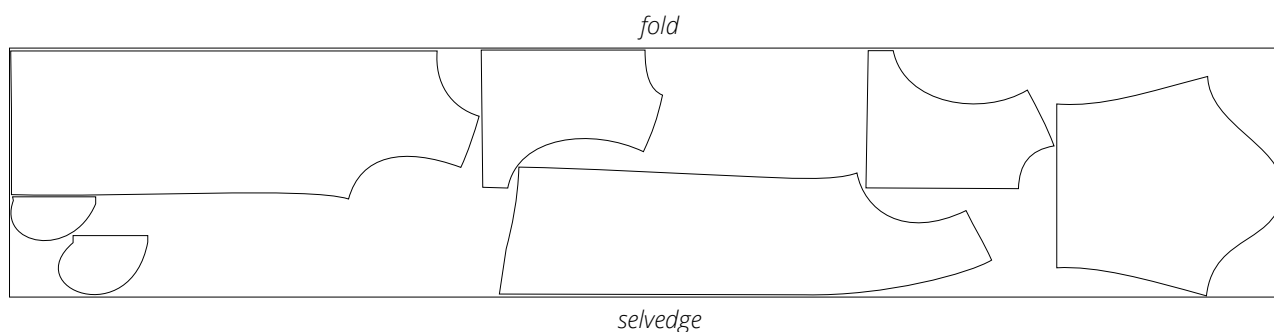


Lining fabric, 140 cm (55") wide, with a directional print,  
cut on fold, for sizes XS-L in all heights

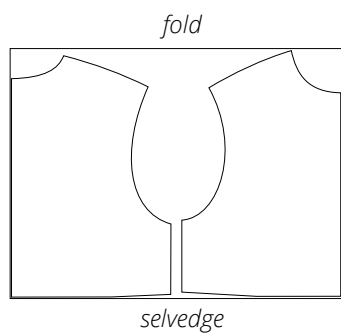


**Attention!** Cut the sleeve pieces on a single layer out of the leftover fabric.

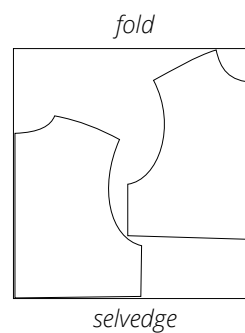
Lining fabric, 140 cm (55") wide, with a directional print,  
cut on fold, for size XL in all heights



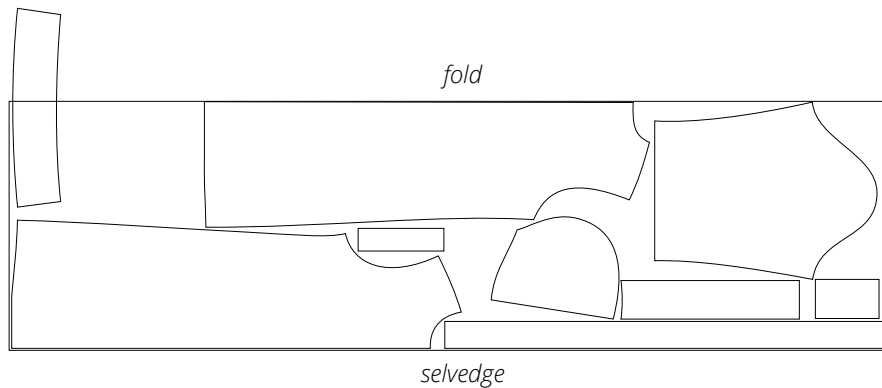
Additional material (insulation 50),  
150 cm (59") wide, cut on fold,  
for sizes XS-M in all heights



Additional material (insulation 50),  
150 cm (59") wide, cut on fold,  
for sizes L-XL in all heights

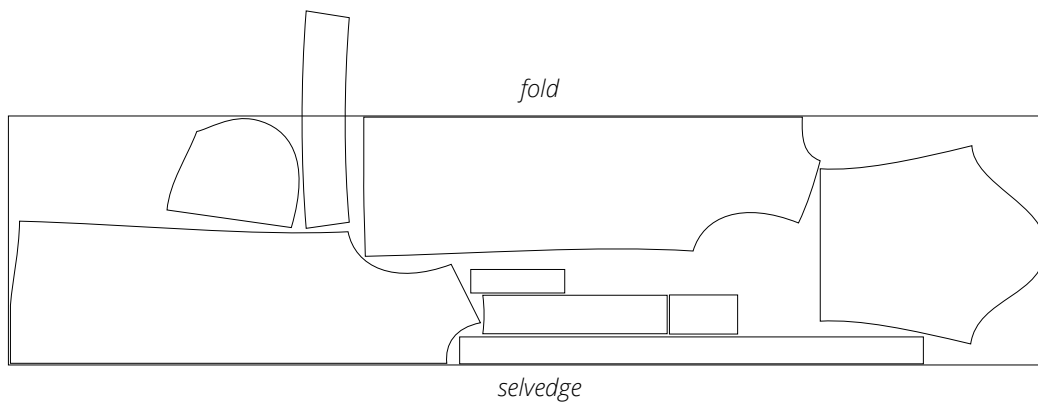


Additional material (insulation 100), 150 cm (59") wide,  
cut on fold, for sizes XS-S in all heights



**Attention!** Cut only one stand collar piece on a single layer out of the leftover fabric.  
Cut the top placket and hood center panel pieces one each.

Additional material (insulation 100), 150 cm (59") wide,  
cut on fold, for sizes M-XL in all heights



**Attention!** Cut only one stand collar piece on a single layer out of the leftover fabric.  
Cut the top placket and hood center panel pieces one each.

# READY? LET'S GET SEWING!



Cut the pocket open along the marked lines. When cutting diagonally into the corners, stop 1–2 mm away from the stitching line.

**Important!** When slashing the pocket, make sure not to cut the pocket lining.



Push the welt and pocket lining to the wrong side of the front piece through the opening.

Press the pocket facing joined with the lining and the welt without steam.



Place the pocket lining pieces right sides together, align the edges, and pin.



Fold the corners of the pocket side edges to the wrong side to form precise right angles and pin in place.