

FROM THE FOUNDER OF THE #VIKISEWS BRAND

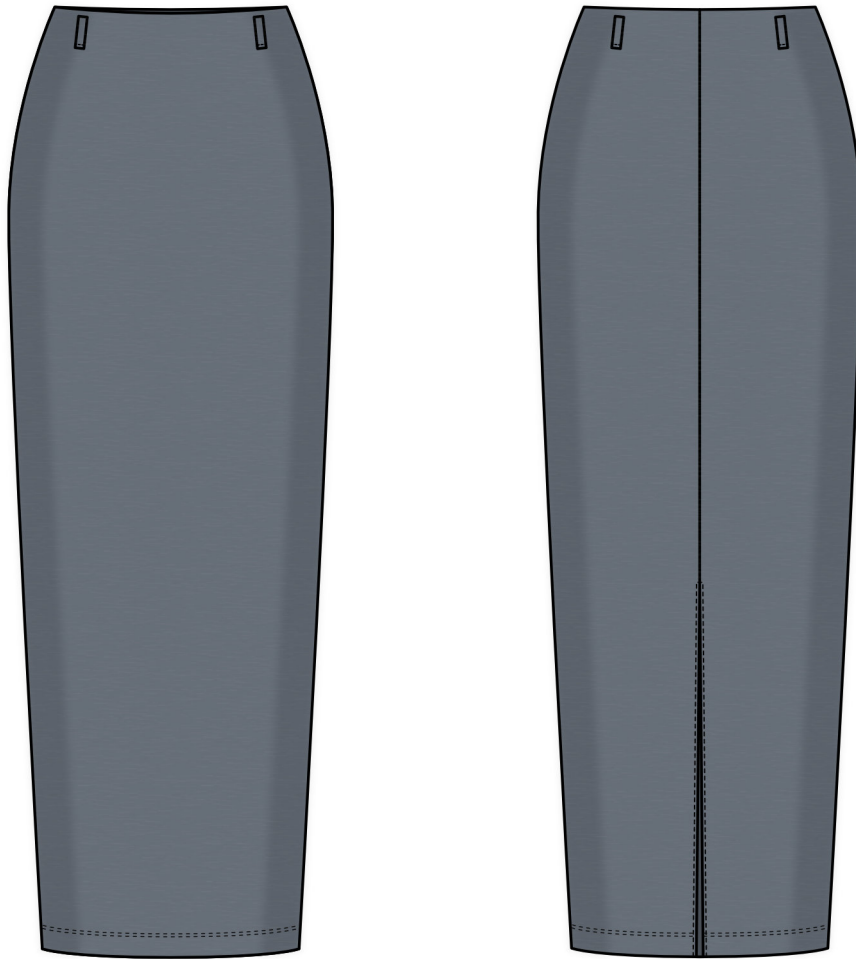


Back in 2016, when I was working on my first set of sewing instructions, I was trying to write them in such a way that even a complete beginner could easily understand and use them to create their very first garment. These instructions laid the foundation for the Vikisews brand, its vision and its mission. I wanted to create modern patterns with the utmost detailed and clear instructions.

Now, with each new collection we are constantly improving our instructions, amending them and adding more relevant details. By the time the final product reaches you, our drafters, correctors, and editors would have spent weeks perfecting every word and every photograph. If you compile a few of our instructions together, you will get a sewing manual that will assist you in sewing all kinds of garments at any difficulty level.

And I would be very happy if these instructions helped you to turn your hobby into a lifelong passion... Enjoy the process! Create your ultimate dream wardrobe! Wear your garments proudly for years to come!

If you have any questions, please contact us at info@vikisews.com — we are always there to help.



OLENNA PATTERN DESCRIPTION

Olenna is a close-fitting, straight-cut skirt, sitting below the natural waistline. The waist is finished with an elasticated grown-on facing. There are belt loops positioned along the front and back waistline and a slit in the center back seam. Olenna is below-knee length.



IMPORTANT!

The contents of this pattern are copyright protected and belong exclusively to Vikisews. You may use Vikisews patterns for personal use. It is prohibited to share Vikisews patterns and instructions with third parties, as well as to publish patterns and instructions online for public access. **Non-compliance with the mentioned rules is a violation of the US copyright law and may result in civil liability and criminal prosecution.**

You may use Vikisews patterns for commercial use, to sew custom-made garments and/or create fashion collections, on the condition that the patterns are solely used in a manufacturing setting and are not further shared with individuals.

TOTAL EASE ALLOWANCE

	Waistline ease (estimated)	Hipline ease
cm	5–7.6	-1.4
inches	2–3	-½

GARMENT LENGTH

Height, cm	Garment length, cm	Height, ft	Garment length, in
1 (154–160)	82.7–83.9	1 (5'1"–5'3")	32 ½–33
2 (162–168)	85.7–86.9	2 (5'4"–5'6")	33 ¾–34 ¼
3 (170–176)	88.7–89.9	3 (5'7"–5'9")	34 ⅞–35 ⅜
4 (178–184)	91.7–92.9	4 (5'10"–6'1")	36 ⅛–36 ⅝

SUGGESTED FABRIC

To sew this skirt, choose medium-weight, soft, stretchy or low-stretch knit fabrics (1.2–1.8 stretch factor) made of natural, artificial, blended, or synthetic fibers.

The following fabrics are recommended: three-thread fleece knits, double knits, and sweater knits.

Attention! We recommend using only stretchy knit fabrics for this skirt.

You can determine the fabric's stretch factor yourself: mark a 10 cm (4") section across the width, stretch it, and divide the stretched length by 10 to get the stretch factor.

The skirt in the photo is made of double-layer knit. The fabric is medium-weight, soft, and low-stretch. The fiber content is 68% polyester + 29% viscose + 3% elastane. The fabric weight is 400 g/m². The stretch factor is: 1.4.

FABRIC AND NOTIONS REQUIREMENTS

1. Main fabric, 140 cm wide, with a directional print/nap, in meters:

Height, cm	Size 34-52
1 (154-160)	0.95
2 (162-168)	
3 (170-176)	1
4 (178-184)	

Main fabric, 55" wide, with a directional print/nap, in yards:

Height, ft	Size 34-52
1 (5'1"-5'3")	1
2 (5'4"-5'6")	
3 (5'7"-5'9")	1 ½
4 (5'10"-6'1")	

IMPORTANT! When purchasing fabric, please account for shrinkage and buy 5% more than required.

2. Elastic, 4 cm (1 5/8") wide — 65-95 cm (25 5/8-37 3/8"), depending on size. The exact elastic length is specified in the pattern

3. Stitched bias-cut fusible stay tape with stitch reinforcement, 1.5 cm (5/8") wide — 40 cm (15 3/4")

4. Twill tape for slit reinforcement, 2-3 cm (3/4-1 1/8") wide — 5 cm (2") long, for all sizes and heights

5. Matching thread — 5 spools (1 spool for the sewing machine + 4 spools for the overlocker)

TOOLS AND EQUIPMENT

- sewing machine for construction
- overlocker for construction and finishing raw edges. This may be replaced with a stretch overlock stitch or a zigzag stitch on the sewing machine (overlock or zigzag stitch width 2-3 mm, stitch length 2.5 mm)
- coverstitch or coverlock machine for finishing the garment hem. If you don't have a coverstitch machine, it can be replaced with a twin needle on any regular sewing machine that can do a zigzag stitch
- loop turner

IMPORTANT! We recommend using specialty needles when working with knit fabrics (for example, STRETCH, SUPER STRETCH, JERSEY, etc.). These are ballpoint needles, so they part the threads of the fabric you are stitching without piercing them.

PATTERN PIECES LIST

From main fabric:

- front — cut 1 on fold
- back — cut 2
- belt loop — cut 1 (5 pcs.)

***IMPORTANT!** Don't forget to transfer all pattern markings and notches onto the fabric.*

SEAM ALLOWANCES

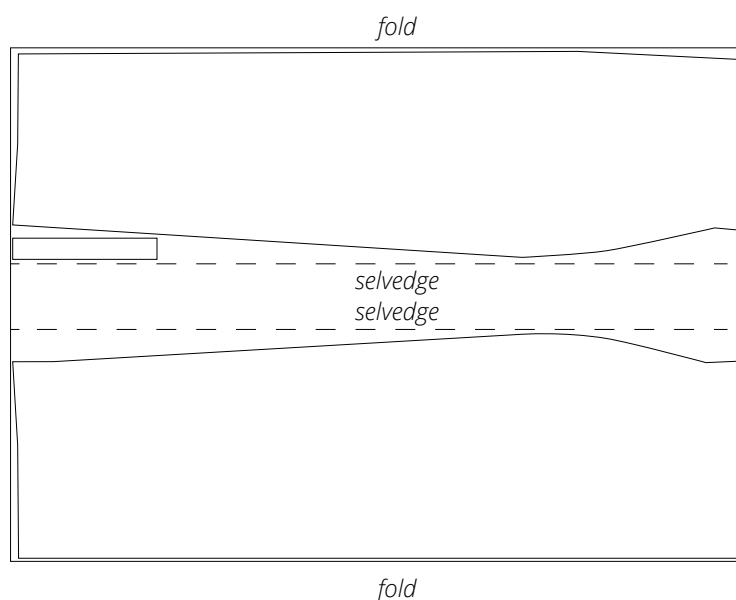
All pattern pieces include seam allowances as follows:

- garment hem — 3 cm (1 1/8")
- all other edges — 1 cm (3/8")

Please keep this in mind when laying out the pattern pieces on the fabric.

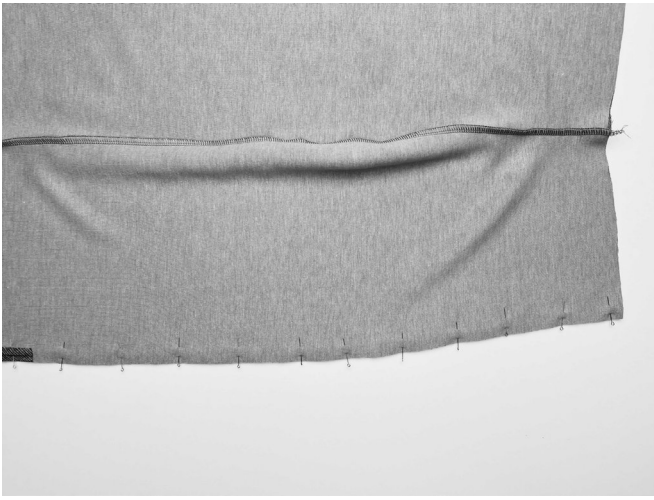
CUTTING LAYOUT

Main fabric, 140 cm (55") wide, with a directional print/nap, cut with two folds, for all sizes in all heights



Important! Cut only one belt loop piece.

READY? LET'S GET SEWING!



Place the back pieces right sides together. Align the center back edges, match the notches, and pin.

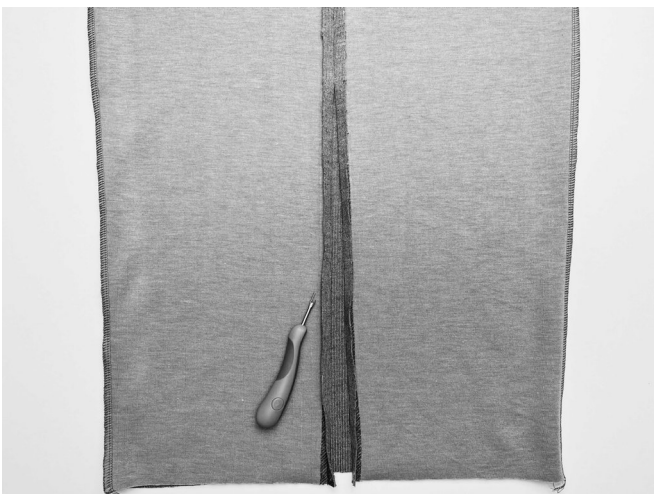
Machine-stitch from the top edge down to the slit notch, backstitching at the beginning and end of the seam.



Baste the slit section by hand or on the sewing machine using an increased stitch length. Do not backstitch.



Press the center back seam allowances open.



Remove the basting stitches at the slit area.