

FROM THE FOUNDER OF THE #VIKISEWS BRAND



Back in 2016, when I was working on my first set of sewing instructions, I was trying to write them in such a way that even a complete beginner could easily understand and use them to create their very first garment. These instructions laid the foundation for the Vikisews brand, its vision and its mission. I wanted to create modern patterns with the utmost detailed and clear instructions.

Now, with each new collection we are constantly improving our instructions, amending them and adding more relevant details. By the time the final product reaches you, our drafters, correctors, and editors would have spent weeks perfecting every word and every photograph. If you compile a few of our instructions together, you will get a sewing manual that will assist you in sewing all kinds of garments at any difficulty level.

And I would be very happy if these instructions helped you to turn your hobby into a lifelong passion... Enjoy the process! Create your ultimate dream wardrobe! Wear your garments proudly for years to come!

If you have any questions, please contact us at info@vikisews.com — we are always there to help.



MARY PATTERN DESCRIPTION

Mary is a semi-fitted dress with an accentuated waist and a skirt that flares out towards the bottom. The flaring of the skirt is achieved with additional pieces both gathered and pleated at the top and incorporated into the side seams of the dress. The front and back of the dress feature waist darts and center seams. There is an invisible zipper in the center back seam. The dress has an underbust seam, with the top front bodice gathered at the bottom, a low V-neckline, and decorative buttons along the center front seam. The edge of the turn-down collar is finished with cotton lace. The set-in sleeves are short and wide, featuring elasticated hem casings. The sleeve caps are both gathered and pleated. Mary is above-knee length.



IMPORTANT!

The contents of this pattern are copyright protected and belong exclusively to Vikisews. You may use Vikisews patterns for personal use. It is prohibited to share Vikisews patterns and instructions with third parties, as well as to publish patterns and instructions online for public access. **Non-compliance with the mentioned rules is a violation of the US copyright law and may result in civil liability and criminal prosecution.**

You may use Vikisews patterns for commercial use, to sew custom-made garments and/or create fashion collections, on the condition that the patterns are solely used in a manufacturing setting and are not further shared with individuals.

TOTAL EASE ALLOWANCE

	Bust ease	Waistline ease	Hipline ease	Upper arm ease
cm	1.8–4.4	2.6–3.9	180.3–289.8	20.9–26.1
inches	3/4–1 3/4	1–1 1/2	7 1/4–11 1/8	8 1/4–10 1/4

GARMENT LENGTH, SLEEVE LENGTH

Height, cm	Garment length, cm	Sleeve length, cm
1 (154–160)	79.3–85.6	31.9–34.9
2 (162–168)	82.3–88.6	33.1–36.1
3 (170–176)	85.3–91.6	34.3–37.4
4 (178–184)	88.3–94.6	35.4–38.7

Height, ft	Garment length, in	Sleeve length, in
1 (5'1"–5'3")	31 1/4–33 3/4	12 1/2–13 3/4
2 (5'4"–5'6")	32 3/8–34 7/8	13–14 1/4
3 (5'7"–5'9")	33 5/8–36 1/8	13 1/2–14 3/4
4 (5'10"–6'1")	34 3/4–37 1/4	13 7/8–15 1/4

SUGGESTED FABRIC

To sew this dress, choose dress-weight fabrics with the following properties:

- medium weight, pliable, breathable, soft, non-stretch or low-stretch, opaque
- the fiber content can include natural fibers (wool, silk, cotton, linen), artificial fibers (viscose), blends (tencel + cotton, cotton + polyester, cotton + viscose, etc.), and synthetics (polyester, polyester + elastane)
- the following fabrics are recommended: shirting, cotton, poplin, sateen

Attention! We do not recommend stretchy knit fabrics and lightweight sheer fabrics (chiffon, organza, stretch lace).

The dress in the photo is made of dress-weight fabric. The fiber content is a blend of 98% cotton and 2% elastane. The fabric weight is 210 g/m². The fabric is medium weight, without stretch.

The collar is made of 100% cotton shirting. The fabric weight is 160 g/m².

FABRIC AND NOTIONS REQUIREMENTS

1. Main fabric, 200–250 g/m², 140 cm wide, with a directional print/nap, in meters:

Height, cm	Size								
	34–36	38	40	42	44	46	48	50	52
1 (154–160)	1.9	2.25	2.3	2.4	2.45	2.65	2.75	2.95	3
2 (162–168)	1.95	2.3	2.4	2.5	2.55	2.75	2.8	3.05	3.1
3 (170–176)	2	2.4	2.45	2.6	2.65	2.85	2.9	3.15	3.2
4 (178–184)	2.05	2.45	2.55	2.65	2.7	2.9	3	3.25	3.3

Main fabric, 200–250 g/m², 55" wide, with a directional print/nap, in yards:

Height, ft	Size								
	34–36	38	40	42	44	46	48	50	52
1 (5'1"–5'3")	2 1/8	2 1/2	2 1/2	2 5/8	2 5/8	2 7/8	3	3 1/4	3 1/4
2 (5'4"–5'6")	2 1/8	2 1/2	2 5/8	2 3/4	2 3/4	3	3	3 3/8	3 3/8
3 (5'7"–5'9")	2 1/8	2 5/8	2 5/8	2 7/8	2 7/8	3 1/8	3 1/8	3 1/2	3 1/2
4 (5'10"–6'1")	2 1/4	2 5/8	2 3/4	2 7/8	3	3 1/8	3 1/4	3 1/2	3 5/8

2. Additional fabric (for the collar), 150–180 g/m², 140 cm wide, with a directional print/nap, in meters:

Height, cm	Size				
	34–38	40	42–48	50	52
1 (154–160)	0.4	0.4	0.45	0.45	0.5
2 (162–168)	0.4	0.45	0.45	0.45	0.5
3 (170–176)	0.4	0.4	0.45	0.5	0.5
4 (178–184)	0.4	0.45	0.45	0.5	0.5

Additional fabric (for the collar), 150–180 g/m², 55" wide, with a directional print/nap, in yards:

Height, ft	Size		
	34–38	40	42–52
1 (5'1"–5'3")	3/8	3/8	1/2
2 (5'4"–5'6")	3/8	1/2	1/2
3 (5'7"–5'9")	3/8	3/8	1/2
4 (5'10"–6'1")	3/8	1/2	1/2

IMPORTANT! When purchasing fabric, please account for shrinkage and buy 5% more than required.

3. Lightweight interfacing, knit or woven, 40 g/m², 140 cm wide, in meters:

Height, cm	Size				
	34–38	40–42	44	46–48	50–52
1 (154–160)	0.4	0.4	0.45	0.45	0.5
2 (162–168)	0.4	0.4	0.45	0.45	0.5
3 (170–176)	0.4	0.45	0.45	0.5	0.55
4 (178–184)	0.4	0.45	0.45	0.5	0.55

Lightweight interfacing, knit or woven, 40 g/m², 55" wide, in yards:

Height, ft	Size			
	34–38	40–42	44–48	50–52
1 (5'1"–5'3")	3/8	3/8	1/2	1/2
2 (5'4"–5'6")	3/8	3/8	1/2	1/2
3 (5'7"–5'9")	3/8	1/2	1/2	5/8
4 (5'10"–6'1")	3/8	1/2	1/2	5/8

4. Cotton lace trim, 2.5–3 cm (1–1 1/8") wide — 1.1–1.44 m (1 1/4–1 5/8 yd)

5. Stitched bias-cut fusible stay tape with stitch reinforcement, 1.5 cm (5/8") wide — 1.83–2.17 m (2–2 3/8 yd)

6. One invisible zipper, 65 cm (25 5/8") long, for all sizes in all heights

7. Elastic, 1 cm (3/8") wide — 52–70 cm (20 1/2–27 1/2"), depending on the size

8. Eight buttons, 1.2–1.5 cm (1/2–5/8") in diameter

9. Matching thread for the main fabric — 5 spools (1 spool for the sewing machine + 4 spools for the overlocker)

10. Matching thread for the additional fabric — 1 spool for the sewing machine

TOOLS AND EQUIPMENT

- sewing machine for construction
- overlocker for finishing raw edges. This may be replaced with a stretch overlock stitch or a zigzag stitch on the sewing machine (overlock or zigzag stitch width 2–3 mm, stitch length 2.5 mm)
- stitch-in-the-ditch foot for the sewing machine (optional)
- invisible zipper foot for the sewing machine
- one-sided foot for the sewing machine
- elastic threader (may be replaced with a safety pin)

PATTERN PIECES LIST

1. From main fabric:

- top front — cut 2
- top front lining — cut 2
- bottom front — cut 2
- side front skirt — cut 2
- back — cut 2
- side back skirt — cut 2
- back neck facing — cut 2
- sleeve — cut 2

2. From additional fabric:

- upper collar — cut 1 on fold
- undercollar — cut 1 on fold

IMPORTANT! Don't forget to transfer all pattern markings and notches onto the fabric.

3. From interfacing:

- upper collar — cut 1 on fold
- undercollar — cut 1 on fold
- back neck facing — cut 2

SEAM ALLOWANCES

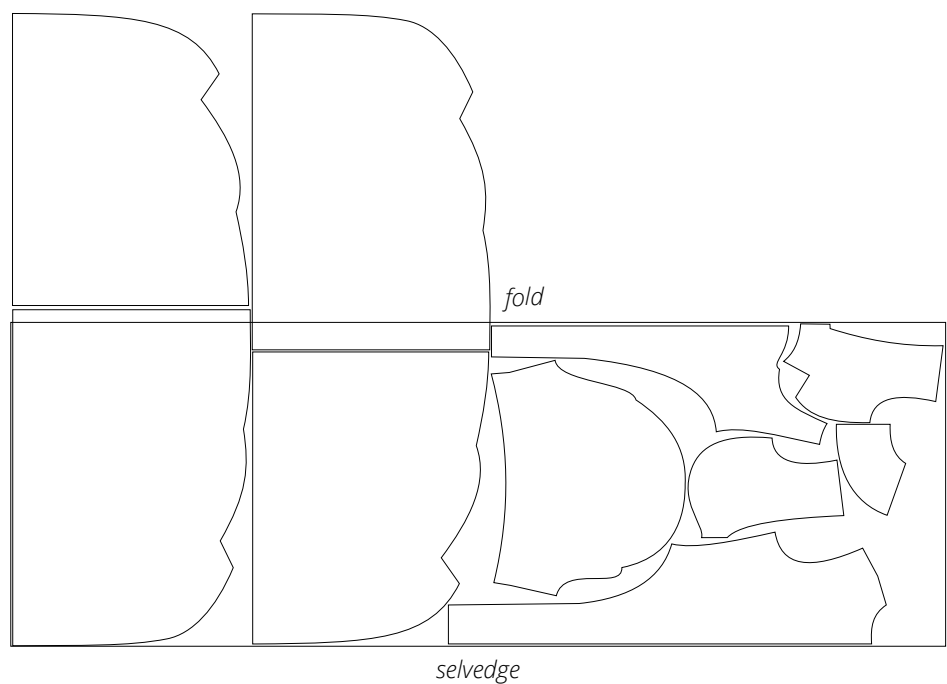
All pattern pieces include seam allowances as follows:

- garment hem allowance — 3 cm (1 1/8")
- sleeve hem allowance — 2.5 cm (1")
- all other edges — 1 cm (3/8")

Take this into account when laying out pattern pieces on the fabric.

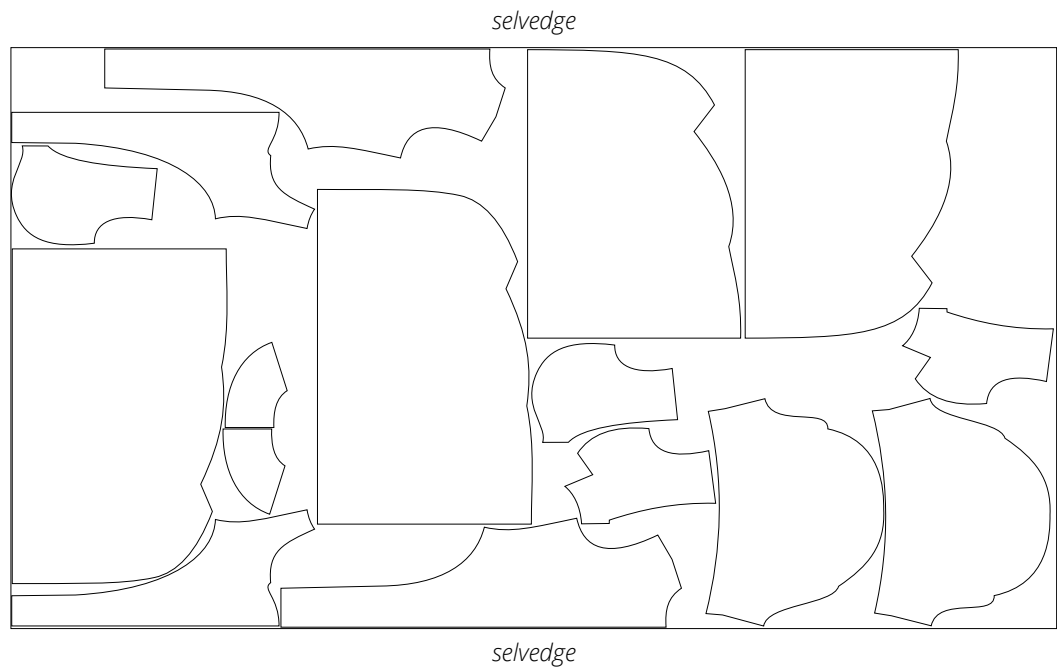
CUTTING LAYOUT

Main fabric, 140 cm (55") wide, with a directional print/nap, cut on fold, for sizes 34–36 in all heights

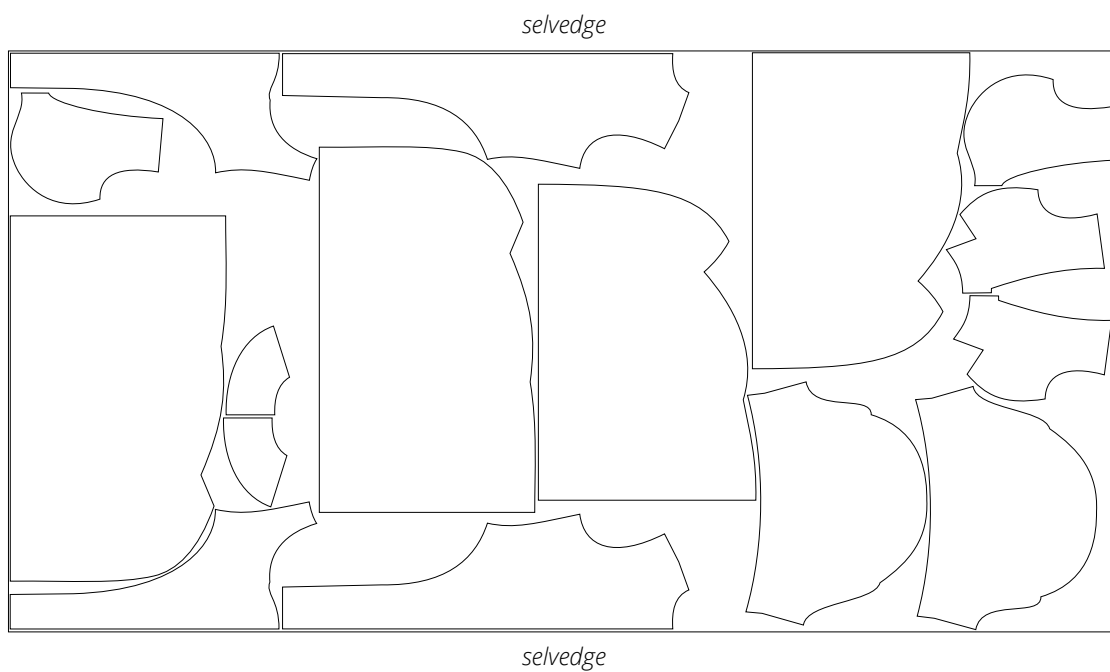


Important! Cut the side front skirt and side back skirt pieces on a single layer out of the leftover fabric.

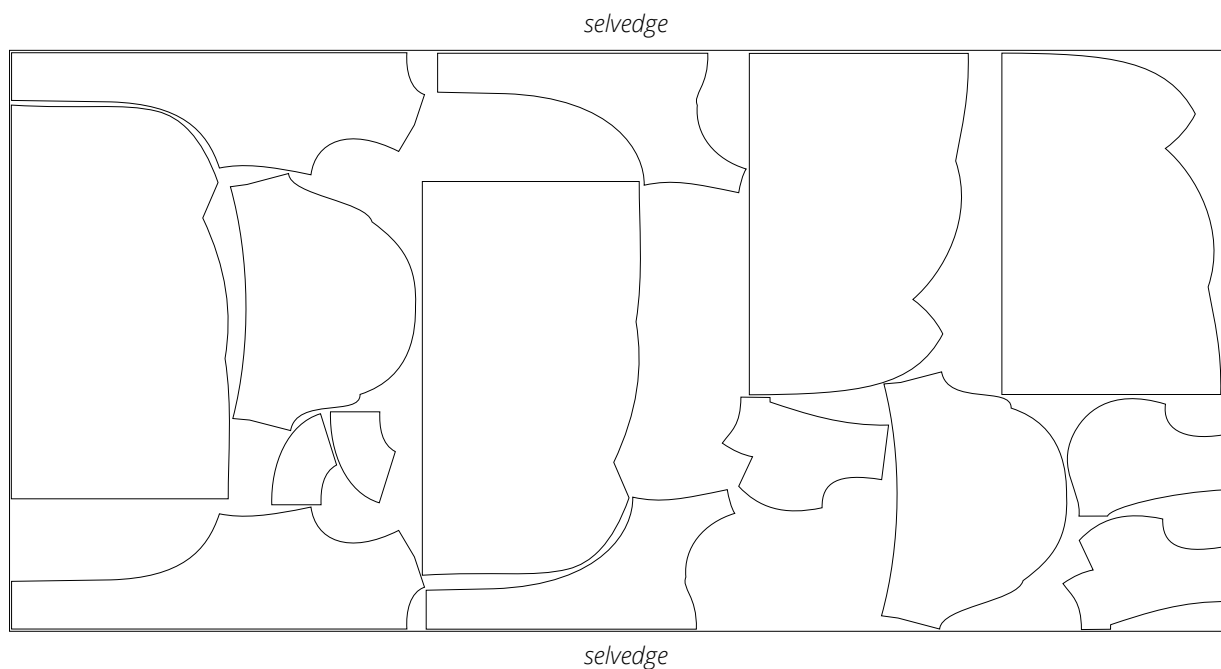
Main fabric, 140 cm (55") wide, with a directional print/nap, cut on a single layer, for sizes 38–40 in all heights



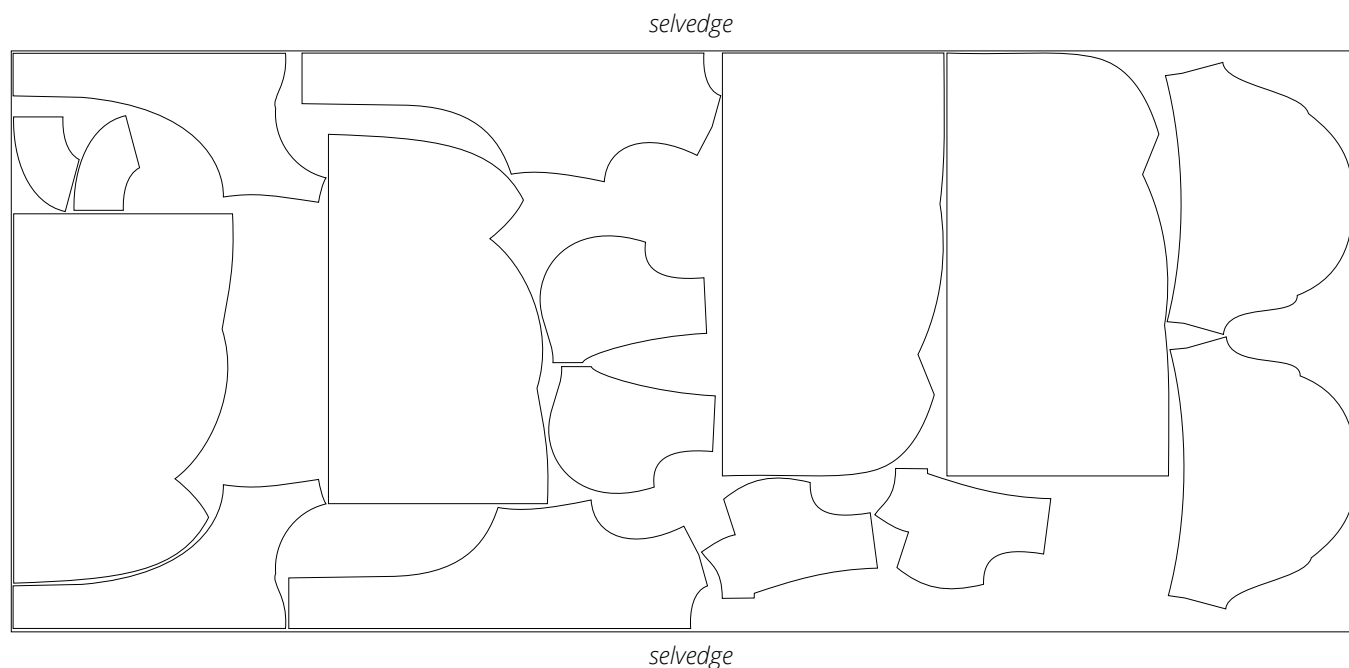
Main fabric, 140 cm (55") wide, with a directional print/nap,
cut on a single layer, for sizes 42-44 in all heights



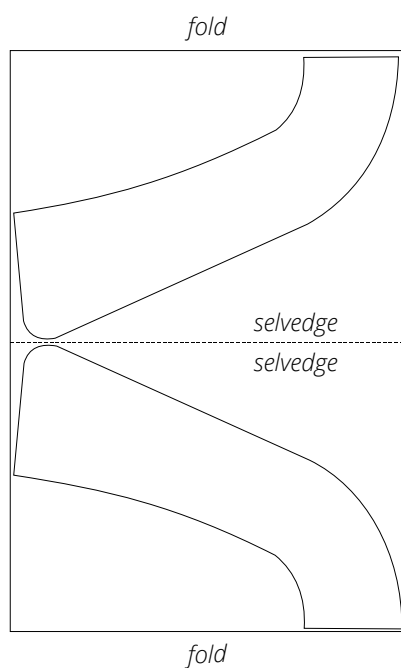
Main fabric, 140 cm (55") wide, with a directional print/nap,
cut on a single layer, for sizes 46-48 in all heights



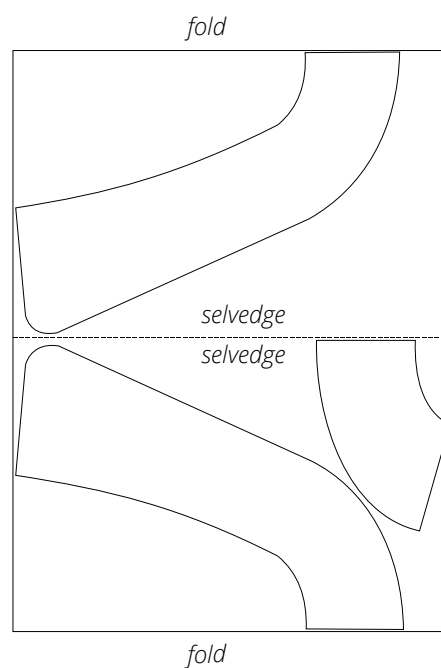
Main fabric, 140 cm (55") wide, with a directional print/nap, cut on a single layer, for sizes 50–52 in all heights



Additional fabric, 140 cm (55") wide, with a directional print/nap, cut with two folds, for all sizes in all heights



Interfacing, 140 cm (55") wide, cut with two folds, for all sizes in all heights



READY? LET'S GET SEWING!



Place the assembled top front and bottom front pieces right sides together. Align the underbust edges, match the notches and center seams, and pin. Stitch on the sewing machine, backstitching at the beginning and end of the seam.



Press the seam allowances towards the top front piece.



Finish the center edges of the back pieces on the overlocker, keeping the right side facing up. Press the seams.