

FROM THE FOUNDER OF THE #VIKISEWS BRAND

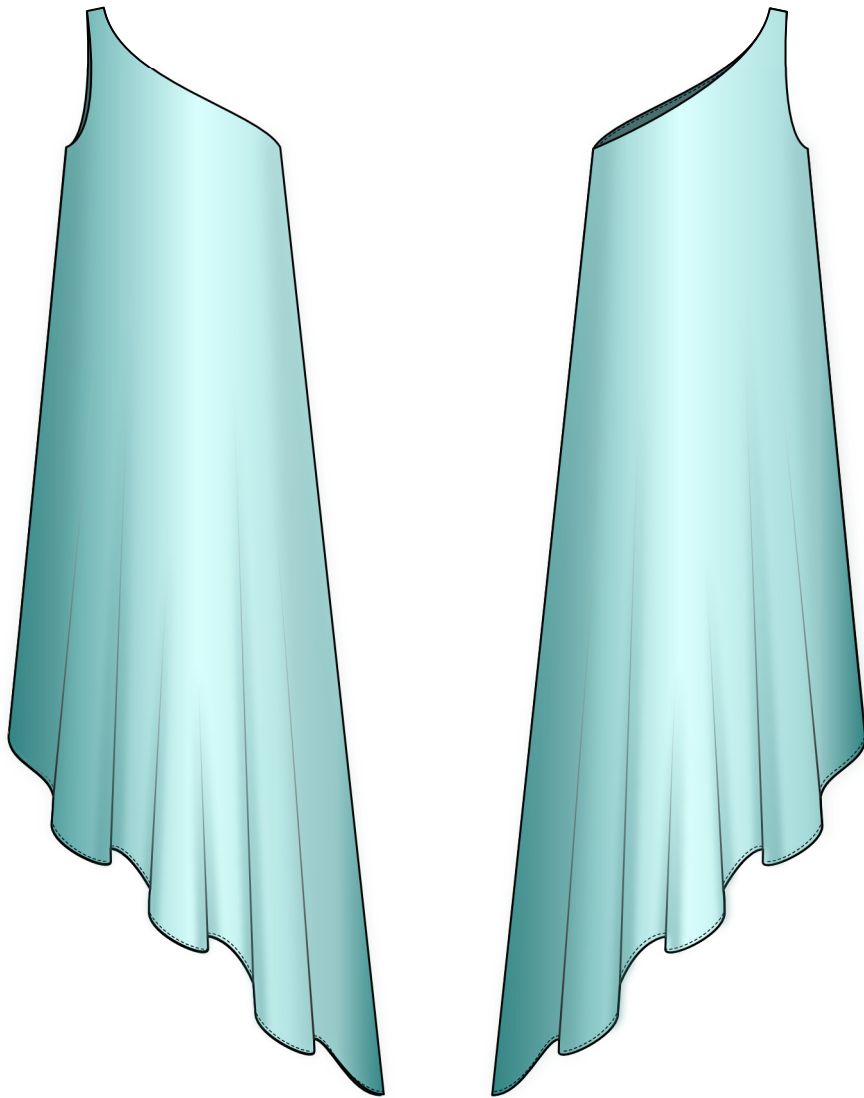


Back in 2016, when I was working on my first set of sewing instructions, I was trying to write them in such a way that even a complete beginner could easily understand and use them to create their very first garment. These instructions laid the foundation for the Vikisews brand, its vision and its mission. I wanted to create modern patterns with the utmost detailed and clear instructions.

Now, with each new collection we are constantly improving our instructions, amending them and adding more relevant details. By the time the final product reaches you, our drafters, correctors, and editors would have spent weeks perfecting every word and every photograph. If you compile a few of our instructions together, you will get a sewing manual that will assist you in sewing all kinds of garments at any difficulty level.

And I would be very happy if these instructions helped you to turn your hobby into a lifelong passion... Enjoy the process! Create your ultimate dream wardrobe! Wear your garments proudly for years to come!

If you have any questions, please contact us at info@vikisews.com — we are always there to help.



FARIDA PATTERN DESCRIPTION

Farida is a bias-cut, loose-fitting dress with an A-line silhouette. It has a single strap over the right shoulder. The neckline and armhole are finished with a facing. The hem is asymmetrical. The dress is below-knee length.



IMPORTANT!

The contents of this pattern are copyright protected and belong exclusively to Vikisews. You may use Vikisews patterns for personal use. It is prohibited to share Vikisews patterns and instructions with third parties, as well as to publish patterns and instructions online for public access. **Non-compliance with the mentioned rules is a violation of the US copyright law and may result in civil liability and criminal prosecution.**

You may use Vikisews patterns for commercial use, to sew custom-made garments and/or create fashion collections, on the condition that the patterns are solely used in a manufacturing setting and are not further shared with individuals.

TOTAL EASE ALLOWANCE

	Bust ease	Waistline ease	Hipline ease
cm	-0.2–4.9	47.8–59	60.2–79.4
inches	-1/8–1 7/8	18 7/8–23 1/4	23 3/4–31 1/4

GARMENT LENGTH

Height, cm	Shorter side seam length, cm	Longer side seam length, cm
1 (154–160)	63.6–64.6	105.1–106.2
2 (162–168)	65.7–66.6	108.6–109.8
3 (170–176)	67.7–68.7	112.1–113.2
4 (178–184)	69.8–70.8	115.6–116.7
Height, ft	Shorter side seam length, in	Longer side seam length, in
1 (5'1"–5'3")	25–25 3/8	41 3/8–41 3/4
2 (5'4"–5'6")	25 7/8–26 1/4	42 3/4–43 1/4
3 (5'7"–5'9")	26 5/8–27	44 1/8–44 5/8
4 (5'10"–6'1")	27 1/2–27 7/8	45 1/2–46

SUGGESTED FABRIC

To sew this dress, choose dress-weight fabrics that are medium weight, pliable, soft, non-stretch or low-stretch, and opaque. The fiber content can include natural fibers, artificial fibers, blends, or synthetics.

Recommended fabrics: satin, viscose, crepe de chine, sateen, natural silk, artificial silk.

The dress in the photos is made of satin. The fabric is medium weight, pliable, soft, with a little stretch. The fiber content is 100% polyester. The fabric weight is 240 g/m².

FABRIC AND NOTIONS REQUIREMENTS

1. Main fabric, 140 cm wide, with a directional print/nap, in meters:

Height, cm	Size									
	34	36	38	40	42	44	46	48	50	52
1 (154–160)	2.1	2.2	2.3	2.35	2.45	2.5	2.55	2.6	2.7	2.8
2 (162–168)	2.2	2.3	2.45	2.45	2.55	2.6	2.65	2.75	2.85	2.95
3 (170–176)	2.35	2.4	2.5	2.55	2.6	2.7	2.75	2.85	2.95	3.05
4 (178–184)	2.45	2.5	2.6	2.65	2.7	2.75	2.85	2.95	3.05	3.15

Main fabric, 55" wide, with a directional print/nap, in yards:

Height, ft	Size									
	34	36	38	40	42	44	46	48	50	52
1 (5'1"–5'3")	2 1/4	2 3/8	2 1/2	2 5/8	2 5/8	2 3/4	2 3/4	2 7/8	3	3
2 (5'4"–5'6")	2 3/8	2 1/2	2 5/8	2 5/8	2 3/4	2 7/8	2 7/8	3	3 1/8	3 1/4
3 (5'7"–5'9")	2 5/8	2 5/8	2 3/4	2 3/4	2 7/8	3	3	3 1/8	3 1/4	3 3/8
4 (5'10"–6'1")	2 5/8	2 3/4	2 7/8	2 7/8	3	3	3 1/8	3 1/4	3 3/8	3 1/2

IMPORTANT! When purchasing fabric, please account for shrinkage and buy 5% more than required.

2. Matching thread – 4 spools (1 spool for the sewing machine + 3 spools for the overlocker).

TOOLS AND EQUIPMENT

- sewing machine for construction
- overlocker for finishing raw edges. This may be replaced with a stretch overlock stitch or a zigzag stitch on the sewing machine (overlock or zigzag stitch width 2–3 mm, stitch length 2.5 mm).

PATTERN PIECES LIST

From main fabric:

- front (part 1) – cut 1
- front (part 2) – cut 1
- back (part 1) – cut 1
- back (part 2) – cut 1
- front lining – cut 1
- back lining – cut 1

***IMPORTANT!** Don't forget to transfer all pattern markings and notches onto the fabric.*

***IMPORTANT!** The pattern pieces with the word "face" printed on them should be cut from the right side of the fabric, i.e. with both the pattern piece and fabric facing up.*

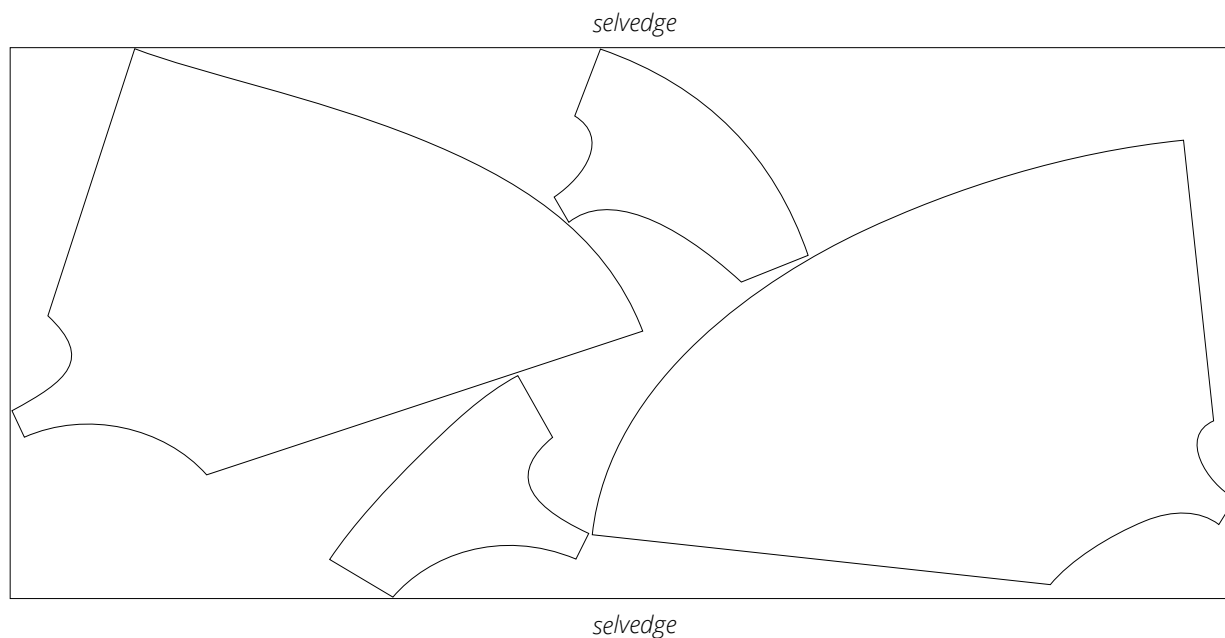
SEAM ALLOWANCES

All pattern pieces include 1 cm (3/8") seam allowances.

Take this into account when laying out pattern pieces on the fabric.

CUTTING LAYOUT

Main fabric, 140 cm (55") wide, with a directional print/nap,
cut on a single layer, for all sizes in all heights



READY? LET'S GET SEWING!



Stitch the garment and lining shoulder and side seams on the sewing machine, backstitching at the beginning and end of each seam.

Finish the shoulder and side seam allowances of both the garment and lining on the overlocker. When overlocking the garment seams, keep the back piece facing up. For the lining, keep the front lining piece facing up.



Press the side seam allowances of the garment towards the front.

Press the side seam allowances of the lining towards the back.



Press the shoulder seam allowances of the garment towards the front.

Press the shoulder seam allowances of the lining towards the back.