

# FROM THE FOUNDER OF THE #VIKISEWS BRAND

---

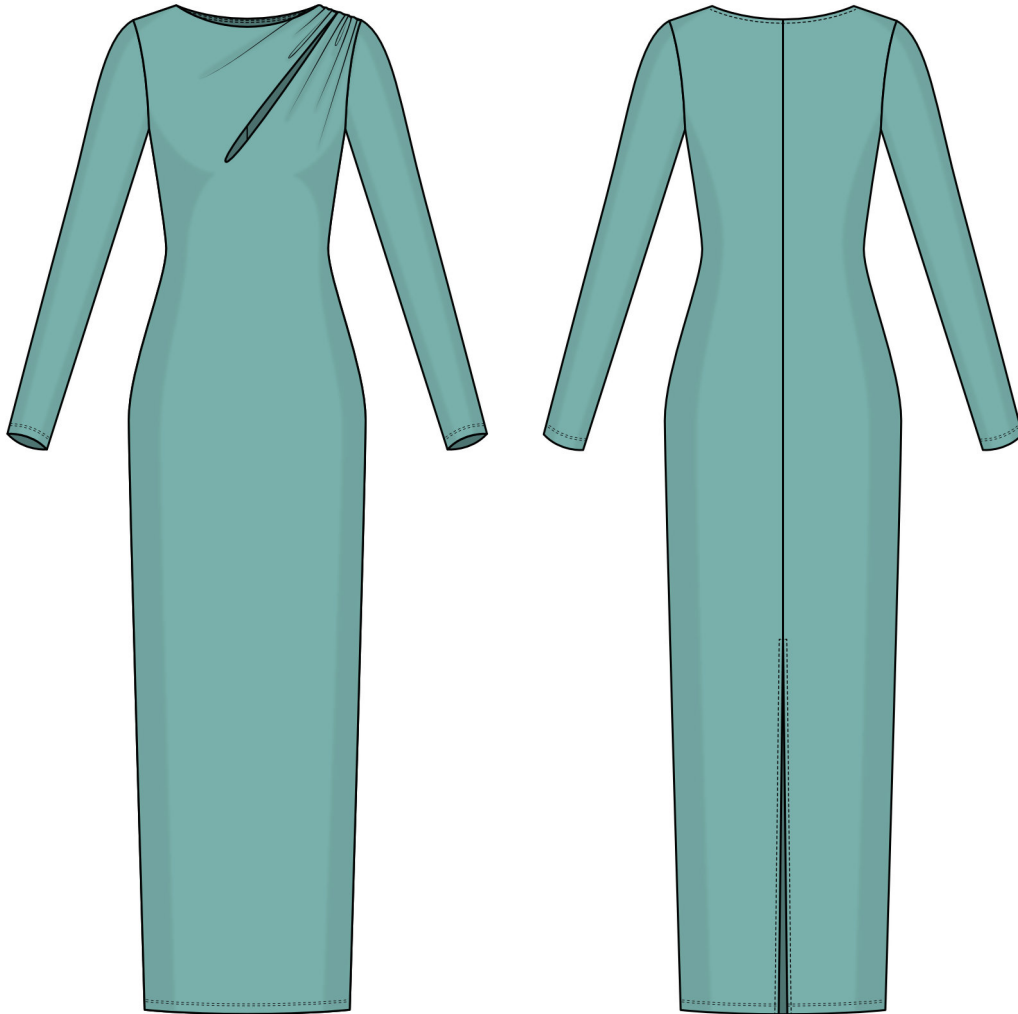


Back in 2016, when I was working on my first set of sewing instructions, I was trying to write them in such a way that even a complete beginner could easily understand and use them to create their very first garment. These instructions laid the foundation for the Vikisews brand, its vision and its mission. I wanted to create modern patterns with the utmost detailed and clear instructions.

Now, with each new collection we are constantly improving our instructions, amending them and adding more relevant details. By the time the final product reaches you, our drafters, correctors, and editors would have spent weeks perfecting every word and every photograph. If you compile a few of our instructions together, you will get a sewing manual that will assist you in sewing all kinds of garments at any difficulty level.

And I would be very happy if these instructions helped you to turn your hobby into a lifelong passion... Enjoy the process! Create your ultimate dream wardrobe! Wear your garments proudly for years to come!

If you have any questions, please contact us at [info@vikisews.com](mailto:info@vikisews.com) — we are always there to help.



## WANDA PATTERN DESCRIPTION

---

Wanda is a close-fitting dress with a boatneck. The front is gathered at the left shoulder seam and features a decorative cutout extending towards the center of the chest. The back has a center seam that ends with a slit. The back neckline is finished with a neckband, while the front bodice is lined to just above the waist. The set-in sleeves are long and close-fitting. Wanda is ankle-length.



## IMPORTANT!

---

The contents of this pattern are copyright protected and belong exclusively to Vikisews. You may use Vikisews patterns for personal use. It is prohibited to share Vikisews patterns and instructions with third parties, as well as to publish patterns and instructions online for public access. **Non-compliance with the mentioned rules is a violation of the US copyright law and may result in civil liability and criminal prosecution.**

You may use Vikisews patterns for commercial use, to sew custom-made garments and/or create fashion collections, on the condition that the patterns are solely used in a manufacturing setting and are not further shared with individuals.

# TOTAL EASE ALLOWANCE

	Bust ease	Waistline ease	Hipline ease	Upper arm ease
cm	-11.6 to -10.6	-6.5 to -3.4	-10.1 to -8.1	-2.2
inches	-4 5/8 to -4 1/8	-2 1/2 to -1 3/8	-4 to -3 1/4	-7/8

# GARMENT LENGTH, SLEEVE LENGTH

Height, cm	Garment length from waist down, cm	Sleeve length, cm
1 (154–160)	93.6	60.8–61
2 (162–168)	96.6	63.8–63
3 (170–176)	99.6	64.8–64.9
4 (178–184)	102.6	66.8–66.9

Height, ft	Garment length from waist down, in	Sleeve length, in
1 (5'1"–5'3")	36 7/8	23 7/8–24
2 (5'4"–5'6")	38	25 1/8–24 3/4
3 (5'7"–5'9")	39 1/4	25 1/2
4 (5'10"–6'1")	40 3/8	26 1/4–26 3/8

# SUGGESTED FABRIC

To sew this dress, choose medium-weight, soft, very stretchy knit fabrics. The stretch factor should be at least 2.0.

You can determine the stretch factor of the fabric yourself. Mark 10 cm (4") along the crosswise grain of the fabric, lay a measuring tape next to the marked section, and stretch the fabric. Divide the measurement you get by 10.

The fiber content should include elastane or spandex and can also include natural fibers, artificial fibers, blends, and synthetics.

The following fabrics are recommended: biflex, sweater knits, double knits, ribbed knits.

**Attention!** We recommend using only stretchy fabrics for this dress.

The dress in the photo is made of lightweight knit fabric. The fabric is medium weight, soft, and very stretchy. The fiber content is 96% polyester and 4% spandex. The fabric weight is 190 g/m<sup>2</sup>.

# FABRIC AND NOTIONS REQUIREMENTS

1. Main fabric, 180–270 g/m<sup>2</sup>, 140 cm wide, with a directional print/nap, in meters:

Height, cm	Size			
	34–36	38	40–44	46–52
1 (154–160)	1.55	1.7	1.75	2
2 (162–168)	1.6	1.75	1.8	2.1
3 (170–176)	1.65	1.8	1.85	2.15
4 (178–184)	1.7	1.85	1.9	2.2

Main fabric, 180–270 g/m<sup>2</sup>, 55" wide, with a directional print/nap, in yards:

Height, ft	Size			
	34–36	38	40–44	46–52
1 (5'1"–5'3")	1 3/4	1 7/8	1 7/8	2 1/8
2 (5'4"–5'6")	1 3/4	1 7/8	2	2 1/4
3 (5'7"–5'9")	1 3/4	2	2	2 3/8
4 (5'10"–6'1")	1 7/8	2	2 1/8	2 3/8

2. Main fabric, 180–270 g/m<sup>2</sup>, 160 cm wide, with a directional print/nap, in meters:

Height, cm	Size						
	34	36–40	42	44	46	48–50	52
1 (154–160)	1.45	1.45	1.5	1.6	1.75	1.8	1.8
2 (162–168)	1.45	1.5	1.55	1.65	1.8	1.85	1.85
3 (170–176)	1.5	1.55	1.55	1.7	1.85	1.9	1.9
4 (178–184)	1.55	1.6	1.65	1.75	1.9	1.95	2

Main fabric, 180–270 g/m<sup>2</sup>, 63" wide, with a directional print/nap, in yards:

Height, ft	Size						
	34	36–40	42	44	46	48–50	52
1 (5'1"–5'3")	1 5/8	1 5/8	1 5/8	1 3/4	1 7/8	2	2
2 (5'4"–5'6")	1 5/8	1 5/8	1 3/4	1 3/4	2	2	2
3 (5'7"–5'9")	1 5/8	1 3/4	1 3/4	1 7/8	2	2 1/8	2 1/8
4 (5'10"–6'1")	1 3/4	1 3/4	1 3/4	1 7/8	2 1/8	2 1/8	2 1/8

**IMPORTANT!** When purchasing fabric, please account for shrinkage and buy 5% more than required.

3. Lightweight knit interfacing, 30 g/m<sup>2</sup> — a rectangular piece of 2×5 cm (3/4×2")
4. Stitched bias-cut fusible stay tape with stitch reinforcement, 1.5 cm (5/8") wide — 1.07–1.16 m (1 1/8–1 1/4 yd)
5. Matching thread — 5 spools (1 spool for the sewing machine + 4 spools for the overlocker)

## TOOLS AND EQUIPMENT

- sewing machine for construction
- overlocker for finishing raw edges. This may be replaced with a stretch overlock stitch or a zigzag stitch on the sewing machine (overlock or zigzag stitch width 2–3 mm, stitch length 2.5 mm)
- stitch-in-the-ditch foot for the sewing machine (optional)
- coverstitch or coverlock machine for finishing the garment hem and sleeve hems. If you don't have a coverstitch machine, it may be replaced with a twin needle on any regular sewing machine that can do a zigzag stitch

## PATTERN PIECES LIST

From main fabric:

- front — cut 1
- back — cut 2
- sleeve — cut 2
- front lining — cut 1
- back neckband — cut 1

**IMPORTANT!** Don't forget to transfer all pattern markings and notches onto the fabric.

Additionally, cut one interfacing strip, 2 cm (3/4") wide and 5 cm (2") long, to reinforce the corner of the front cutout. The interfacing strip should be cut on the straight grain (parallel to the selvedge).

## SEAM ALLOWANCES

All pattern pieces include seam allowances as follows:

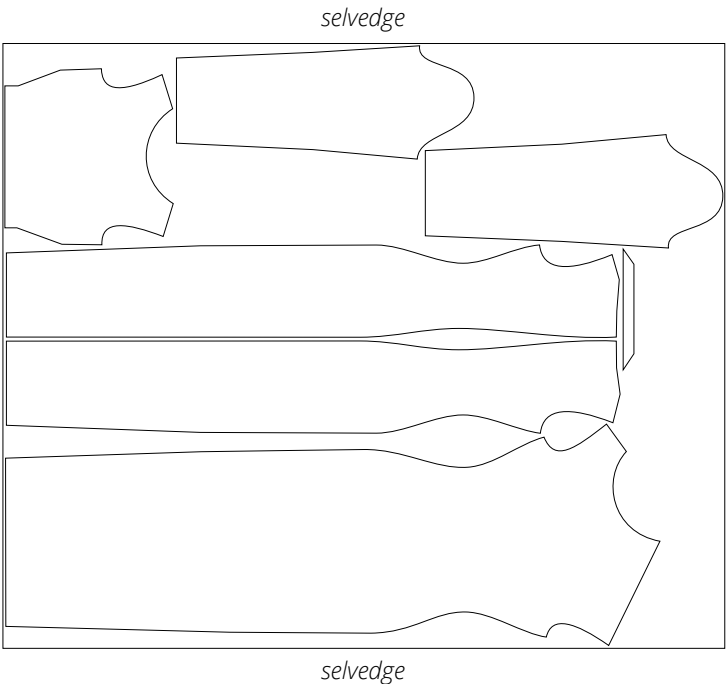
- garment hem allowance — 2 cm (3/4")
- sleeve hem allowance — 2 cm (3/4")
- all other edges — 1 cm (3/8")

Take this into account when laying out pattern pieces on the fabric.

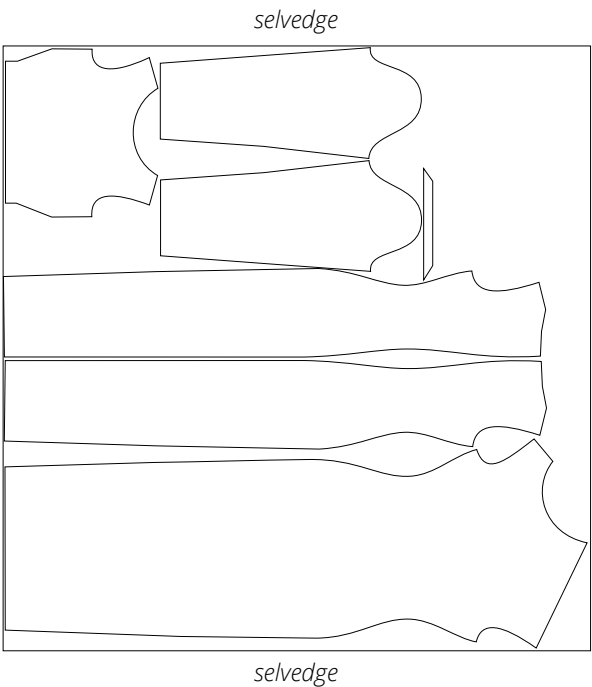
# CUTTING LAYOUT

Main fabric, 140 cm (55") wide, with a directional print/nap, cut on a single layer, for sizes 34-36 in all heights

Main fabric, 160 cm (63") wide, with a directional print/nap, cut on a single layer, for sizes 42-44 in all heights

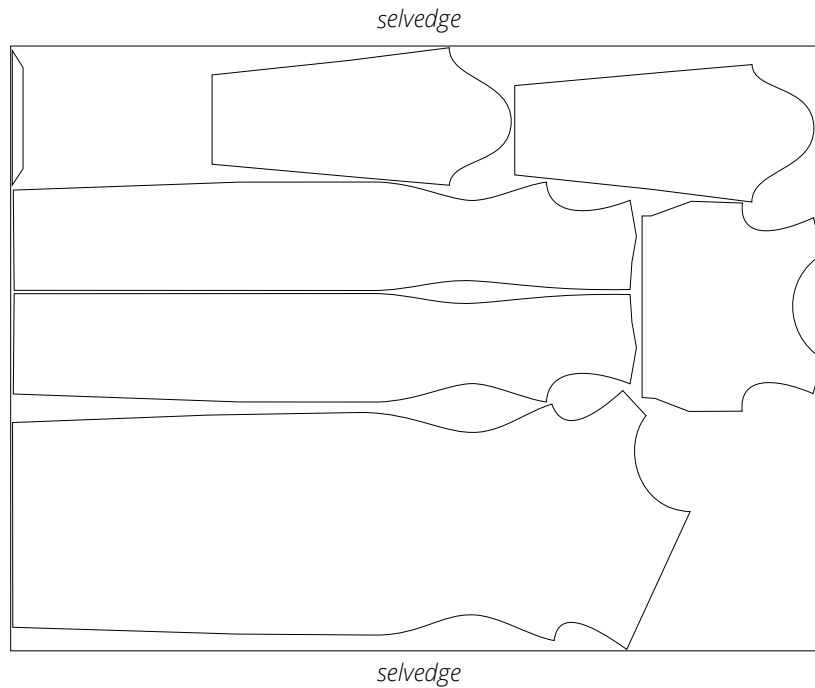


Main fabric, 160 cm (63") wide, with a directional print/nap, cut on a single layer, for sizes 34-40 in all heights

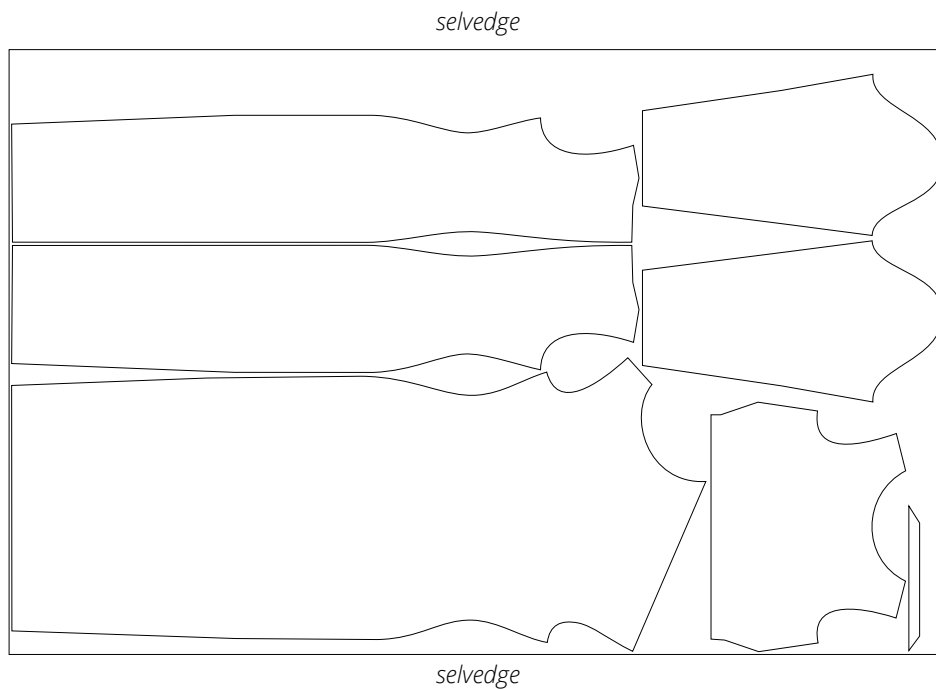


Main fabric, 140 cm (55") wide, with a directional print/nap,  
cut on a single layer, for sizes 38–44 in all heights

Main fabric, 160 cm (63") wide, with a directional print/nap,  
cut on a single layer, for sizes 46–52 in all heights



Main fabric, 140 cm (55") wide, with a directional print/nap,  
cut on a single layer, for sizes 46–52 in all heights



**READY? LET'S GET SEWING!**



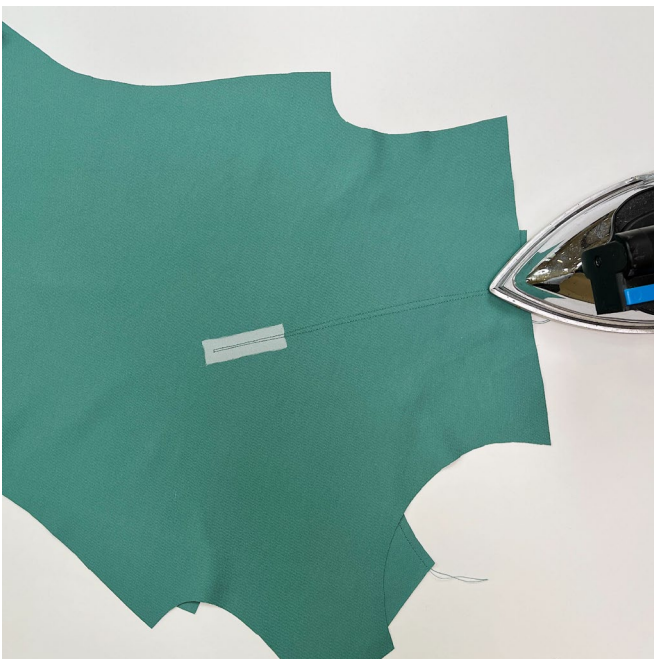


Staystitch the neckline edge on the front lining piece.

Using tailor's chalk, transfer the cutout and dart lines from the pattern to the wrong side of the front lining piece.



Place the front and front lining pieces right sides together. Match and pin the cutout lines.



Machine-stitch along the marked cutout lines. Start stitching at the shoulder edge and stop 3–4 cm (1 1/8–1 5/8") away from the cutout corner. Then stitch up to the cutout apex at 2 mm from the marked line, rotate the piece by 90 degrees, sew two stitches, rotate the piece once again, and stitch for 3–4 cm (1 1/8–1 5/8") at 2 mm from the marked line. Continue stitching along the marked line up to the shoulder edge. Use a 2 mm stitch length. Backstitch at the beginning and end of the seam.

Press the seam.