

FROM THE FOUNDER OF THE #VIKISEWS BRAND



Back in 2016, when I was working on my first set of sewing instructions, I was trying to write them in such a way that even a complete beginner could easily understand and use them to create their very first garment. These instructions laid the foundation for the Vikisews brand, its vision and its mission. I wanted to create modern patterns with the utmost detailed and clear instructions.

Now, with each new collection we are constantly improving our instructions, amending them and adding more relevant details. By the time the final product reaches you, our drafters, correctors, and editors would have spent weeks perfecting every word and every photograph. If you compile a few of our instructions together, you will get a sewing manual that will assist you in sewing all kinds of garments at any difficulty level.

And I would be very happy if these instructions helped you to turn your hobby into a lifelong passion... Enjoy the process! Create your ultimate dream wardrobe! Wear your garments proudly for years to come!

If you have any questions, please contact us at info@vikisews.com — we are always there to help.



CHARLENE PATTERN DESCRIPTION

Charlene is a semi-fitted dress with a waist seam that sits at the natural waistline at the back and slightly above the waist at the front. The back features a center seam and waist darts. There is an invisible zipper in the center back seam. The neckline is V-shaped. The front bodice features bust darts, a decorative cutout under the bust, and ties at the center seam. The skirt is cut on the bias. The set-in sleeves are long and close-fitting. Charlene is ankle-length.



IMPORTANT!

The contents of this pattern are copyright protected and belong exclusively to Vikisews. You may use Vikisews patterns for personal use. It is prohibited to share Vikisews patterns and instructions with third parties, as well as to publish patterns and instructions online for public access. **Non-compliance with the mentioned rules is a violation of the US copyright law and may result in civil liability and criminal prosecution.**

You may use Vikisews patterns for commercial use, to sew custom-made garments and/or create fashion collections, on the condition that the patterns are solely used in a manufacturing setting and are not further shared with individuals.

TOTAL EASE ALLOWANCE

	Bust ease	Waistline ease	Hipline ease	Upper arm ease
cm	-0.6–0.9	2.7–0.8	8.6–13.3	2.9–1.7
inches	-1/4–3/8	1 1/8–3/8	3 3/8–5 1/4	1 1/8–5/8

GARMENT LENGTH, SLEEVE LENGTH

Height, cm	Back length from waist down, cm	Sleeve length, cm
1 (154–160)	96.3–95.7	58.5–58.7
2 (162–168)	98.3–97.7	60.5–60.7
3 (170–176)	100.3–99.7	62.5–62.7
4 (178–184)	102.3–101.7	64.5–64.7

Height, ft	Back length from waist down, in	Sleeve length, in
1 (5'1"–5'3")	37 7/8–37 5/8	23–23 1/8
2 (5'4"–5'6")	38 3/4–38 1/2	23 7/8
3 (5'7"–5'9")	39 1/2–39 1/4	24 5/8
4 (5'10"–6'1")	40 1/4–40	25 3/8–25 1/2

SUGGESTED FABRIC

To sew this dress, choose medium-weight, soft, non-stretch or low-stretch dress-weight fabrics made of natural, artificial, synthetic fibers, or blends.

The following fabrics are recommended: satin, dress-weight viscose, stretch crepe, crepe de chine, natural or artificial silk.

Important! We do not recommend very stretchy and sheer fabrics.

The dress in the photo is made of dress-weight crepe. The fabric is medium weight, soft, and low-stretch. The fiber content is 100% silk. The fabric weight is 210 g/m².

FABRIC AND NOTIONS REQUIREMENTS

1. Main fabric, 140 cm wide, with a directional print/nap, 200–250 g/m², in meters:

Height, cm	Size									
	34	36	38	40	42	44	46	48	50	52
1 (154–160)	2.1	2.2	2.25	2.35	2.45	2.5	2.55	2.65	2.75	2.85
2 (162–168)	2.15	2.25	2.3	2.4	2.5	2.6	2.65	2.75	2.8	2.9
3 (170–176)	2.2	2.25	2.35	2.45	2.55	2.6	2.7	2.8	2.9	3
4 (178–184)	2.25	2.3	2.4	2.5	2.55	2.65	2.8	2.9	3	3.1

Main fabric, 55" wide, with a directional print/nap, 200–250 g/m², in yards:

Height, ft	Size									
	34	36	38	40	42	44	46	48	50	52
1 (5'1"–5'3")	2 1/4	2 3/8	2 1/2	2 5/8	2 5/8	2 3/4	2 3/4	2 7/8	3	3 1/8
2 (5'4"–5'6")	2 3/8	2 1/2	2 1/2	2 5/8	2 3/4	2 7/8	2 7/8	3	3	3 1/8
3 (5'7"–5'9")	2 3/8	2 1/2	2 5/8	2 5/8	2 3/4	2 7/8	3	3	3 1/8	3 1/4
4 (5'10"–6'1")	2 1/2	2 1/2	2 5/8	2 3/4	2 3/4	2 7/8	3	3 1/8	3 1/4	3 3/8

IMPORTANT! When purchasing fabric, please account for shrinkage and buy 5% more than required.

2. Stitched bias-cut fusible stay tape with stitch reinforcement, 1.5 cm (5/8") wide — 2.3–2.8 m (2 1/2–3 yd)

3. One invisible zipper, 55–62 cm (21 5/8–24 3/8") long, depending on the chosen height

4. Matching thread — 5 spools (1 spool for the sewing machine + 4 spools for the overlocker)

TOOLS AND EQUIPMENT

- sewing machine for construction
- overlocker for finishing raw edges. This may be replaced with a stretch overlock stitch or a zigzag stitch on the sewing machine (overlock or zigzag stitch width 2–3 mm, stitch length 2.5 mm)
- one-sided foot for the sewing machine
- stitch-in-the-ditch foot for the sewing machine (optional)
- invisible zipper foot for the sewing machine
- loop turner

PATTERN PIECES LIST

From main fabric:

- front bodice — cut 2
- front bodice lining — cut 2
- front skirt — cut 1
- back bodice — cut 2
- back skirt — cut 2
- sleeve — cut 2
- tie — cut 1
- back neck binding — cut 2
- front skirt binding — cut 1

***IMPORTANT!** Don't forget to transfer all pattern markings and notches onto the fabric.*

SEAM ALLOWANCES

All pattern pieces include seam allowances as follows:

- sleeve hem allowance — 2 cm (3/4")
- all other edges — 1 cm (3/8")

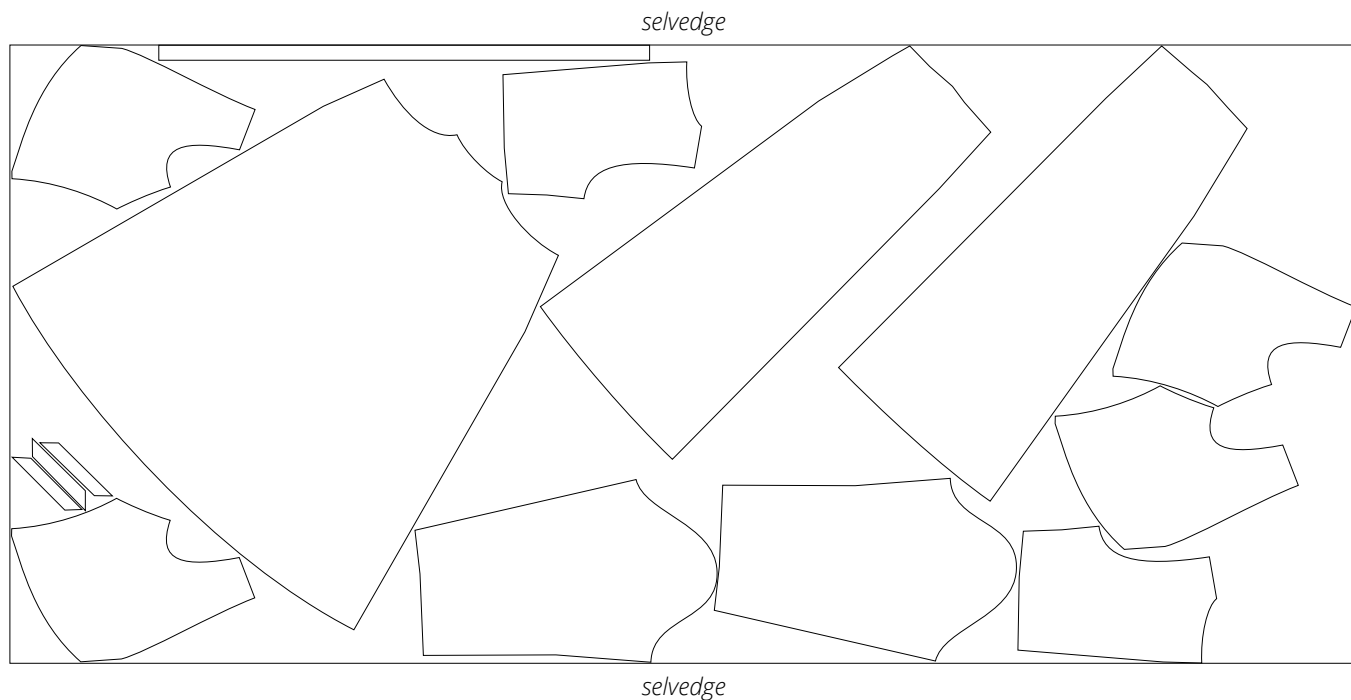
Take this into account when laying out pattern pieces on the fabric.

CUTTING LAYOUT

Main fabric, 140 cm (55") wide, with a directional print/nap, cut on a single layer, for sizes 34–38 in all heights, size 40 in heights 1–2, sizes 42–48 in height 1



Main fabric, 140 cm (55") wide, with a directional print/nap, cut on a single layer, for size 40 in heights 3–4, sizes 42–52 in heights 2–4, and sizes 50–52 in height 1



READY? LET'S GET SEWING!



Press the dart seam allowances on the front bodice upwards.

Press the dart seam allowances on the front bodice lining downwards.



Place the front bodice pieces right sides together. Align the center edges, match the notches, and pin.

Machine-stitch between the notches. Backstitch at the beginning and end of the seam.



Place the front bodice lining pieces right sides together. Align the center edges, match the notches, and pin.

Machine-stitch between the notches. Backstitch at the beginning and end of the seam.