

FROM THE FOUNDER OF THE #VIKISEWS BRAND



Back in 2016, when I was working on my first set of sewing instructions, I was trying to write them in such a way that even a complete beginner could easily understand and use them to create their very first garment. These instructions laid the foundation for the Vikisews brand, its vision and its mission. I wanted to create modern patterns with the utmost detailed and clear instructions.

Now, with each new collection we are constantly improving our instructions, amending them and adding more relevant details. By the time the final product reaches you, our drafters, correctors, and editors would have spent weeks perfecting every word and every photograph. If you compile a few of our instructions together, you will get a sewing manual that will assist you in sewing all kinds of garments at any difficulty level.

And I would be very happy if these instructions helped you to turn your hobby into a lifelong passion... Enjoy the process! Create your ultimate dream wardrobe! Wear your garments proudly for years to come!

If you have any questions, please contact us at info@vikisews.com — we are always there to help.



APOLLINE PATTERN DESCRIPTION

Apolline is a semi-fitted blouse with a straight silhouette. It features a deep V-shaped neckline and slits in the side seams. The long set-in sleeves are finished with cuffs that fasten with buttons and buttonholes. The blouse has a button and buttonhole closure at the center front. Apolline is below-hip length.



IMPORTANT!

The contents of this pattern are copyright protected and belong exclusively to Vikisews. You may use Vikisews patterns for personal use. It is prohibited to share Vikisews patterns and instructions with third parties, as well as to publish patterns and instructions online for public access. **Non-compliance with the mentioned rules is a violation of the US copyright law and may result in civil liability and criminal prosecution.**

You may use Vikisews patterns for commercial use, to sew custom-made garments and/or create fashion collections, on the condition that the patterns are solely used in a manufacturing setting and are not further shared with individuals.

TOTAL EASE ALLOWANCE

	Bust ease	Waistline ease	Hipline ease	Upper arm ease
cm	25.9–18.8	46.2–39	20.8–13.3	8.9–4.2
inches	10 1/4–7 3/8	18 1/4–15 3/8	8 1/4–5 1/4	3 1/2–1 5/8

GARMENT LENGTH, SLEEVE LENGTH

Height, cm	Back length, cm	Sleeve length including shoulder width, cm
1 (154–160)	71–74.6	62.4–66.2
2 (162–168)	75–78.6	65.3–69.1
3 (170–176)	79–82.6	68.2–72.1
4 (178–184)	83–86.6	71.2–75

Height, ft	Back length, in	Sleeve length including shoulder width, in
1 (5'1"–5'3")	28– 29 3/8	24 5/8–26 1/8
2 (5'4"–5'6")	29 1/2–31	25 3/4–27 1/4
3 (5'7"–5'9")	31 1/8–32 1/2	26 8/8–28 3/8
4 (5'10"–6'1")	32 5/8–34 1/8	28–29 1/2

SUGGESTED FABRIC

To sew this blouse, choose medium-weight, pliable, soft, non-stretch or low-stretch, and opaque dress-weight fabrics made of natural fibers, artificial fibers, blends, or synthetics.

The following fabrics are recommended: satin, viscose, crepe de chine, sateen, natural silk, artificial silk.

The blouse in the photo is made of satin. The fabric is medium weight, pliable, soft, and low-stretch. The fiber content is 100% polyester. The fabric weight is 140 g/m².

FABRIC AND NOTIONS REQUIREMENTS

1. Main fabric, 140 cm wide, with a directional print/nap, in meters:

Height, cm	Size				
	34	36	38–40	42–44	46–52
1 (154–160)	1.3	1.35	1.35	1.85	1.9
2 (162–168)	1.4	1.4	1.4	1.95	2
3 (170–176)	1.45	1.45	1.5	2.05	2.1
4 (178–184)	1.55	1.55	1.55	2.15	2.2

Main fabric, 55" wide, with a directional print/nap, in yards:

Height, ft	Size				
	34	36	38–40	42–44	46–52
1 (5'1"–5'3")	1 3/8	1 1/2	1 1/2	2	2 1/8
2 (5'4"–5'6")	1 1/2	1 1/2	1 1/2	2 1/8	2 1/8
3 (5'7"–5'9")	1 5/8	1 5/8	1 5/8	2 1/4	2 1/4
4 (5'10"–6'1")	1 3/4	1 3/4	1 3/4	2 3/8	2 3/8

IMPORTANT! When purchasing fabric, please account for shrinkage and buy 5% more than required.

2. Lightweight interfacing, knit or woven, 140 cm (55") wide, for all sizes in all heights — 1 m (1 1/8 yd)
3. Stitched bias-cut fusible stay tape with stitch reinforcement, 1 cm (3/8") wide — 2 m (2 1/8 yd)
4. Ten button molds or buttons (plus one or two spare ones), 1.1 cm (3/8") in diameter.
5. Matching thread — 5 spools (1 spool for the sewing machine + 4 spools for the overlocker)

TOOLS AND EQUIPMENT

- sewing machine for construction
- overlocker for finishing raw edges. This may be replaced with a stretch overlock stitch or a zigzag stitch on the sewing machine (overlock or zigzag stitch width 2–3 mm, stitch length 2.5 mm)
- buttonhole foot for the sewing machine
- press tool and molds for button covering

PATTERN PIECES LIST

1. From main fabric:

- front — cut 2
- back — cut 1 on fold
- sleeve — cut 2
- cuff — cut 2
- front facing — cut 2
- back neck binding — cut 1
- sleeve binding — cut 2

IMPORTANT! Don't forget to transfer all pattern markings and notches onto the fabric.

2. From interfacing:

- cuff — cut 2
- front facing — cut 2

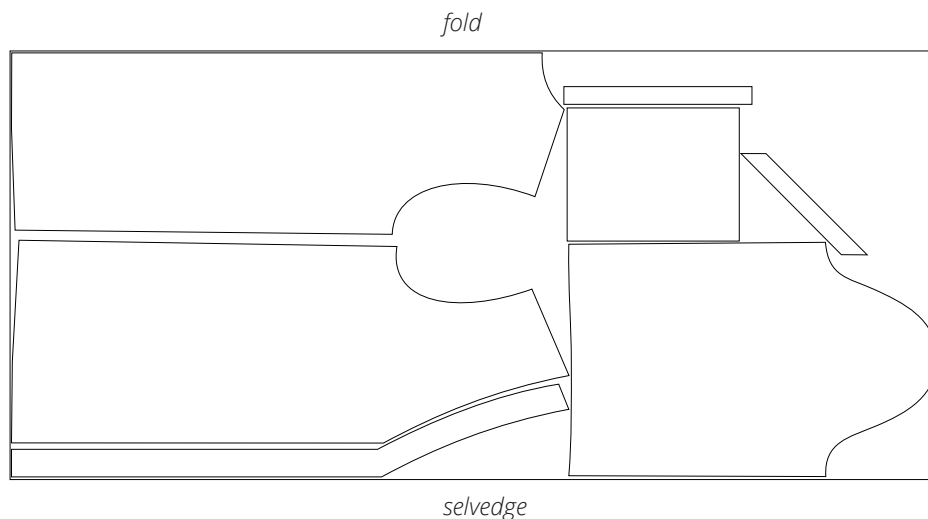
SEAM ALLOWANCES

All pattern pieces include 1 cm (3/8") seam allowances.

Take this into account when laying out the pattern pieces on the fabric.

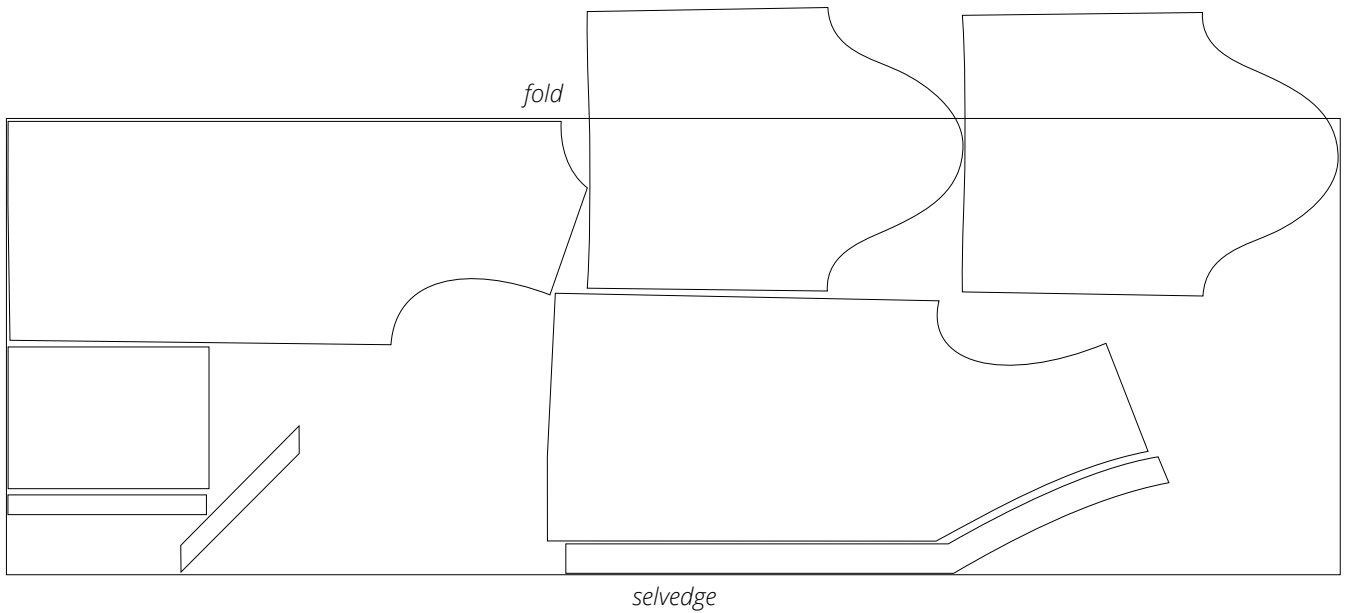
CUTTING LAYOUT

Main fabric, 140 cm (55") wide, with a non-directional print/no nap, cut on fold, for sizes 34–40 in all heights



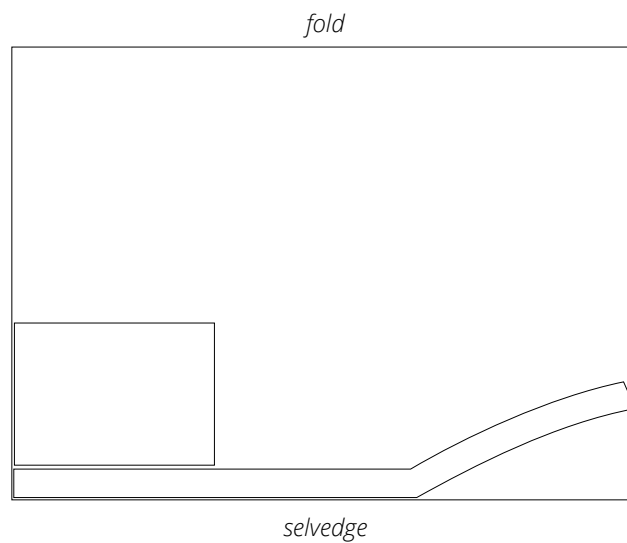
Attention! Cut only one back neck binding piece.

Main fabric, 140 cm (55") wide, with a non-directional print/no nap,
cut on fold, for sizes 42–52 in all heights



Attention! Cut the sleeve pieces on a single layer out of the leftover fabric.
Cut only one back neck binding piece.

Interfacing, 140 cm (55") wide, cut on fold, for all sizes in all heights



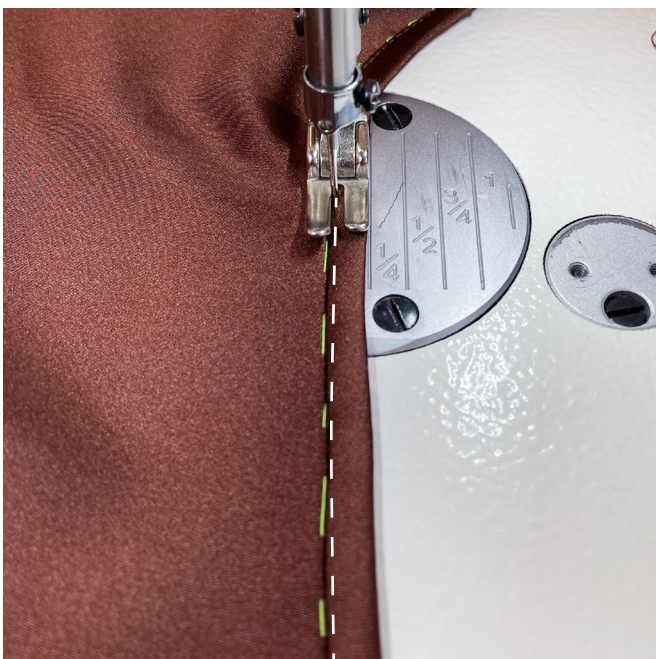
READY? LET'S GET SEWING!



Press the seam allowances towards the binding.



Tightly wrap the loose long edge of the binding over the seam allowances. Hand-baste as shown in the photo.



Working on the right side, machine-stitch at 1–2 mm from the seam. Backstitch at the beginning and end of the seam.