

FROM THE FOUNDER OF THE #VIKISEWS BRAND

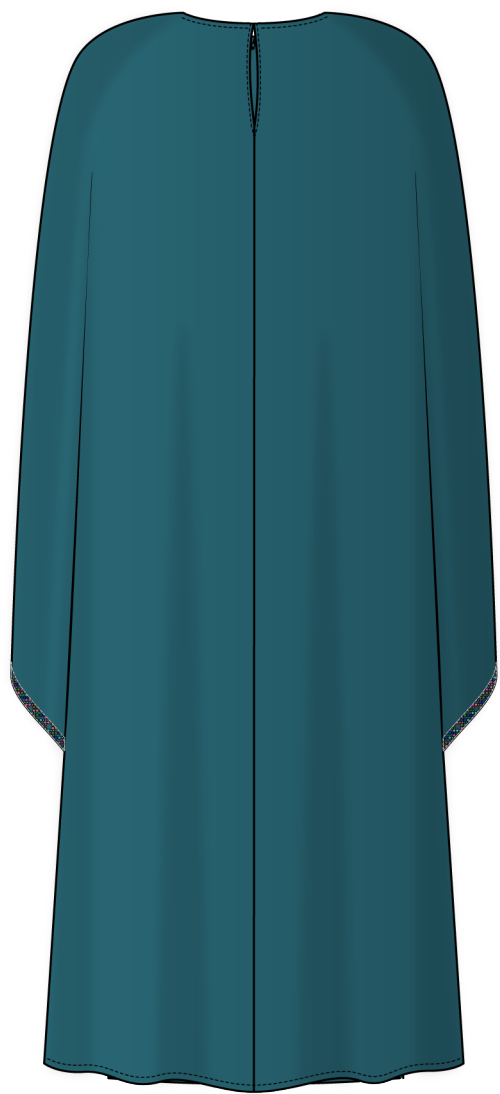


Back in 2016, when I was working on my first set of sewing instructions, I was trying to write them in such a way that even a complete beginner could easily understand and use them to create their very first garment. These instructions laid the foundation for the Vikisews brand, its vision and its mission. I wanted to create modern patterns with the utmost detailed and clear instructions.

Now, with each new collection we are constantly improving our instructions, amending them and adding more relevant details. By the time the final product reaches you, our drafters, correctors, and editors would have spent weeks perfecting every word and every photograph. If you compile a few of our instructions together, you will get a sewing manual that will assist you in sewing all kinds of garments at any difficulty level.

And I would be very happy if these instructions helped you to turn your hobby into a lifelong passion... Enjoy the process! Create your ultimate dream wardrobe! Wear your garments proudly for years to come!

If you have any questions, please contact us at info@vikisews.com — we are always there to help.



OSANNA PATTERN DESCRIPTION

Osanna is a semi-fitted sleeveless dress with a straight silhouette and a round neckline. There is a slit in the center back seam. The dress closes with an invisible zipper in the center back seam. The dress comes with a detachable cape that reaches the bust line at the front and is level with the dress hem at the back. The edge of the cape is finished with a decorative tape. Osanna is below-knee length.



IMPORTANT!

The contents of this pattern are copyright protected and belong exclusively to Vikisews. You may use Vikisews patterns for personal use. It is prohibited to share Vikisews patterns and instructions with third parties, as well as to publish patterns and instructions online for public access. **Non-compliance with the mentioned rules is a violation of the US copyright law and may result in civil liability and criminal prosecution.**

You may use Vikisews patterns for commercial use, to sew custom-made garments and/or create fashion collections, on the condition that the patterns are solely used in a manufacturing setting and are not further shared with individuals.

TOTAL EASE ALLOWANCE

	Bust ease	Waistline ease	Hipline ease
cm	6.9–1.4	28.2–28.3	7.3
inches	2 $\frac{3}{4}$ – $\frac{1}{2}$	11 $\frac{1}{8}$	2 $\frac{7}{8}$

GARMENT LENGTH, SLEEVE LENGTH

Height, cm	Back length, cm	Cape back length, cm
1 (154–160)	114	115
2 (162–168)	117	118
3 (170–176)	120	121
4 (178–184)	123	124

Height, ft	Back length, in	Cape back length, in
1 (5'1"–5'3")	15 $\frac{3}{8}$ –16 $\frac{1}{8}$	23 $\frac{3}{8}$ –24
2 (5'4"–5'6")	16 $\frac{1}{8}$ –16 $\frac{7}{8}$	24 $\frac{1}{8}$ –24 $\frac{3}{4}$
3 (5'7"–5'9")	16 $\frac{7}{8}$ –17 $\frac{3}{4}$	24 $\frac{7}{8}$ –25 $\frac{5}{8}$
4 (5'10"–6'1")	17 $\frac{3}{4}$ –18 $\frac{1}{2}$	25 $\frac{3}{4}$ –26 $\frac{3}{8}$

SUGGESTED FABRIC

To sew this dress, choose medium-weight or lightweight, soft, non-stretch or low-stretch, opaque or semi-sheer dress fabrics made of natural, artificial, blended, or synthetic fibers.

The following fabrics are recommended: satin, crêpe de chine, natural or artificial silk.

Fabrics with blended fiber content are preferable, as they are less prone to wrinkling, generally more resistant to wear and tear, and more durable.

Attention! We do not recommend stretchy knit fabrics.

The dress in the photo is made of lightweight satin. The fabric is medium weight, soft, and non-stretch.

The fiber content is 100% polyester. Fabric weight is 210 g/m².

FABRIC AND NOTIONS REQUIREMENTS

1. Main fabric, 140 cm wide, with a directional print/nap, in meters:

Height, cm	Size							
	34–36	38–40	42	44	46	48	50	52
1 (154–160)	2.8	2.8	2.85	2.85	2.85	2.9	2.9	2.9
2 (162–168)	2.85	2.85	2.9	2.9	2.95	2.95	2.95	4.15
3 (170–176)	2.9	2.95	2.95	3	3	3.05	4.25	4.25
4 (178–184)	3	3	3.05	3.05	3.1	4.3	4.3	4.35

Main fabric, 55" wide, with a directional print/nap, in yards:

Height, ft	Size							
	34–36	38–40	42	44	46	48	50	52
1 (5'1"–5'3")	3	3	3 ⅛	3 ⅛	3 ⅛	3 ⅛	3 ⅛	3 ⅛
2 (5'4"–5'6")	3 ⅛	3 ⅛	3 ⅛	3 ⅛	3 ¼	3 ¼	3 ¼	4 ½
3 (5'7"–5'9")	3 ⅛	3 ¼	3 ¼	3 ¼	3 ¼	3 ⅜	4 ⅝	4 ⅝
4 (5'10"–6'1")	3 ¼	3 ¼	3 ⅜	3 ⅜	3 ⅜	4 ¾	4 ¾	4 ¾

IMPORTANT! When purchasing fabric, please account for shrinkage and buy 5% more than required.

2. Stitched bias-cut fusible stay tape with stitch reinforcement, 1.5 cm (5/8") wide — 1.15–1.3 m (1 1/4–1 3/8 yd).
3. Stitched straight-grain fusible stay tape, 1 cm (3/8") wide — 0.3 m (12").
4. One invisible zipper, 55–65 cm (22–26") long, for all sizes and heights.
5. One hook-and-eye closure, 11.5 mm (1/2") in size.
6. Decorative trim, 1.5–2 cm (5/8–3/4") wide — 2.6–2.8 m (2 7/8–3 yd).
7. Matching thread — 5 spools (1 spool for the sewing machine + 4 spools for the overlocker).

TOOLS AND EQUIPMENT

- sewing machine for construction
- overlocker for finishing raw edges. This may be replaced with a stretch overlock stitch or a zigzag stitch on the sewing machine (overlock or zigzag stitch width 2–3 mm, stitch length 2.5 mm)
- stitch-in-the-ditch foot for the sewing machine (optional)
- invisible zipper foot for the sewing machine
- one-sided foot for the sewing machine

PATTERN PIECES LIST

From main fabric:

- front — cut 1 on fold
- back — cut 2
- cape — cut 1 on fold
- dress neckline binding — cut 1
- armscye binding — cut 2
- cape neckline binding — cut 1
- cape hem binding — cut 2

***IMPORTANT!** Don't forget to transfer all pattern markings and notches onto the fabric.*

SEAM ALLOWANCES

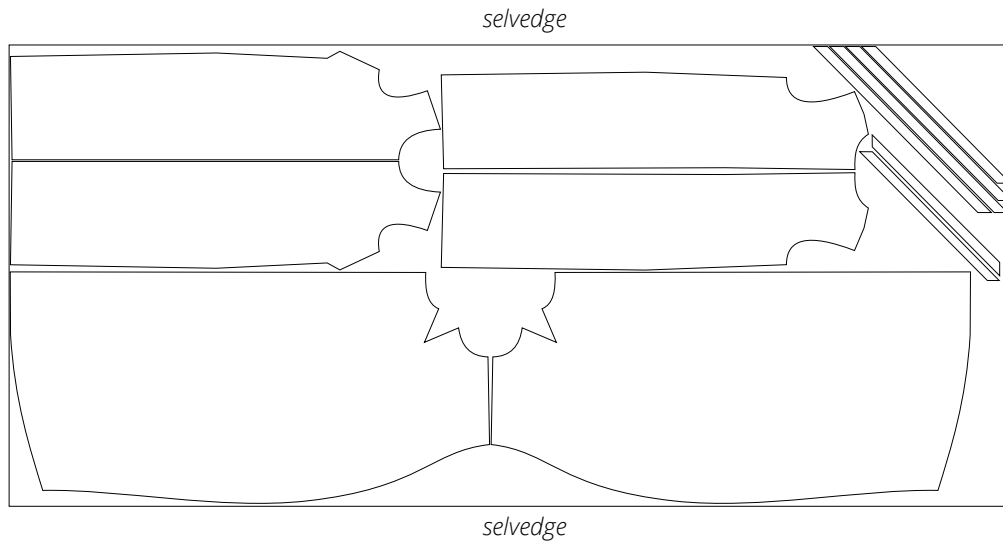
All pattern pieces include seam allowances as follows:

- dress and cape hem allowances — 2.5 cm (1")
- center back seam allowances on the dress and cape — 1.5 cm (5/8")
- all other edges — 1 cm (3/8").

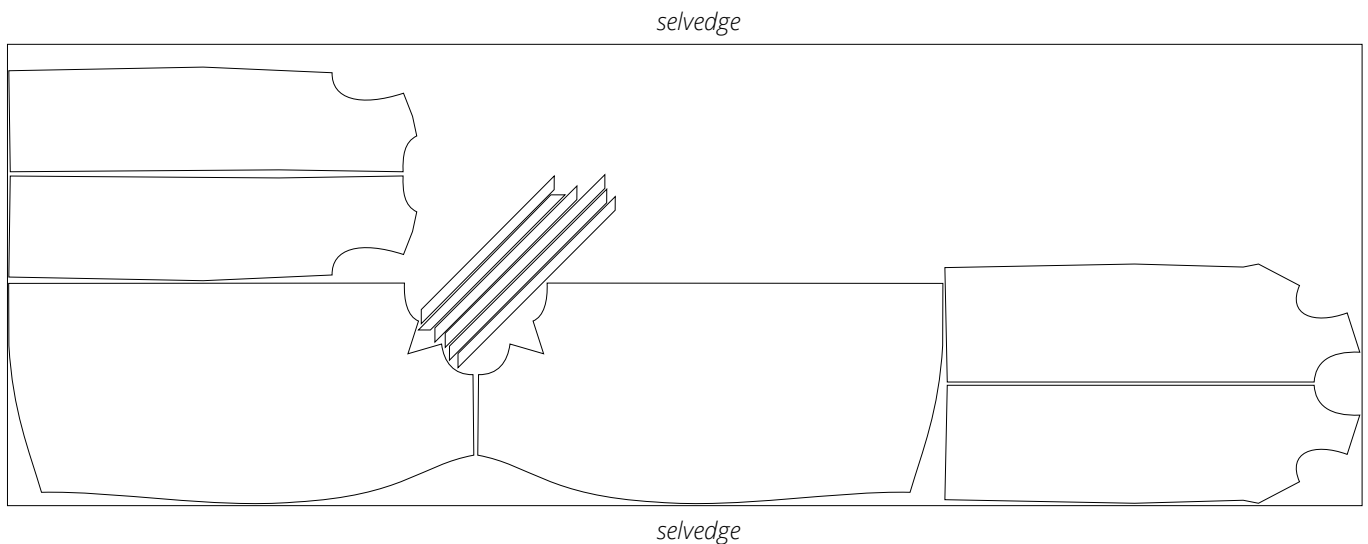
Take this into account when laying out the pattern pieces on the fabric.

CUTTING LAYOUT

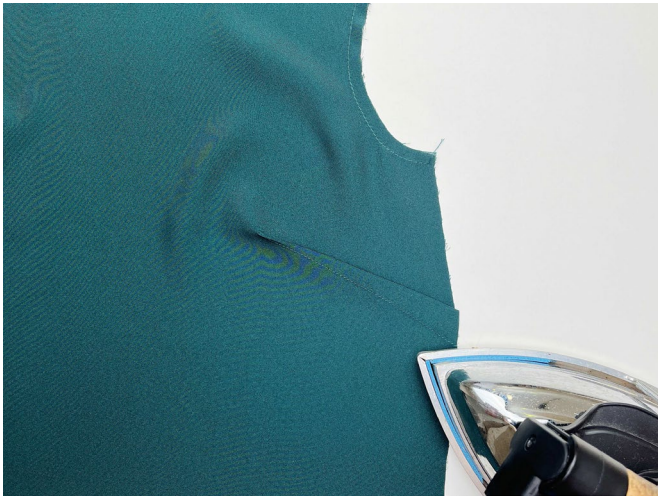
Main fabric, 140 cm (55") wide, with a directional print/nap, cut on a single layer,
for all sizes in height 1, for sizes 34-50 in height 2, for sizes 34-48 in height 3,
and for sizes 34-46 in height 4



Main fabric, 140 cm (55") wide, with a directional print/nap,
cut on a single layer, for size 52 in height 2, for sizes 50-52 in height 3,
and for sizes 48-52 in height 4



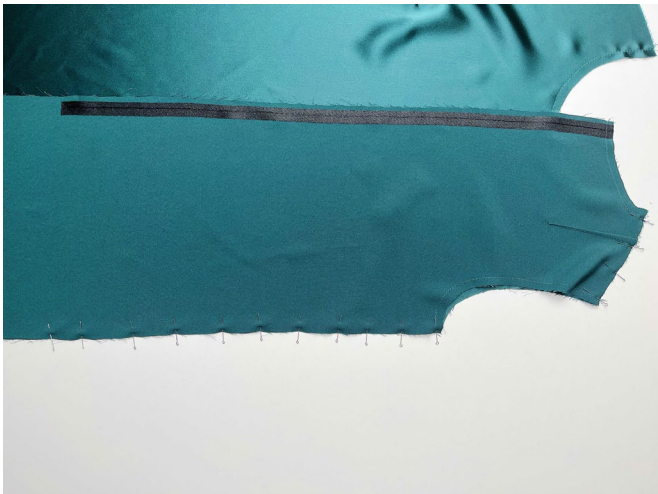
READY? LET'S GET SEWING!



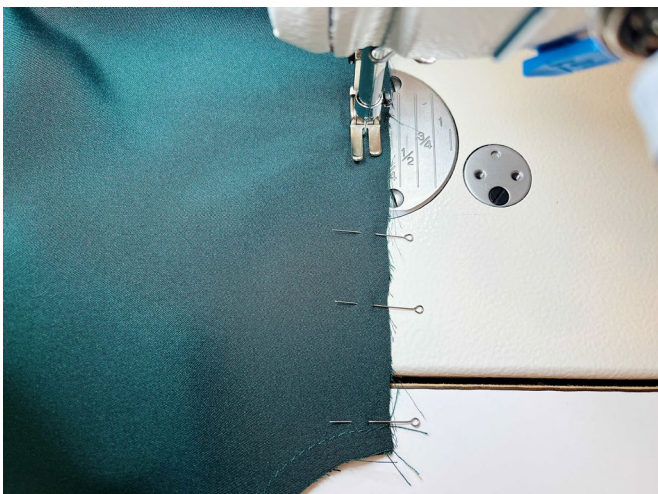
Press the darts on the front piece upwards.



Press the darts on the back piece towards the center back.



Place the front and back pieces right sides together. Align the side and shoulder edges, match the notches, and pin.



Machine-stitch, backstitching at the beginning and end of the seam.