

# FROM THE FOUNDER OF THE #VIKISEWS BRAND

---



Back in 2016, when I was working on my first set of sewing instructions, I was trying to write them in such a way that even a complete beginner could easily understand and use them to create their very first garment. These instructions laid the foundation for the Vikisews brand, its vision and its mission. I wanted to create modern patterns with the utmost detailed and clear instructions.

Now, with each new collection we are constantly improving our instructions, amending them and adding more relevant details. By the time the final product reaches you, our drafters, correctors, and editors would have spent weeks perfecting every word and every photograph. If you compile a few of our instructions together, you will get a sewing manual that will assist you in sewing all kinds of garments at any difficulty level.

And I would be very happy if these instructions helped you to turn your hobby into a lifelong passion... Enjoy the process! Create your ultimate dream wardrobe! Wear your garments proudly for years to come!

If you have any questions, please contact us at [info@vikisews.com](mailto:info@vikisews.com) — we are always there to help.



## DAKOTA PATTERN DESCRIPTION

---

Dakota is a semi-fitted, straight-cut, reversible trench coat made of two types of fabric. The bust darts are transferred to the armholes. The outer front features welt pockets while the inner front has double-welt zipper pockets in the side seams. The raglan sleeves are semi-fitted. The outer sleeve features a button tab, while the inner sleeve is finished with an elasticated casing. There is a turn-down collar with a collar stand on the outer side of the garment. On the inner side, the garment has a three-piece hood that closes with snaps. The trench coat features a center front button and bound buttonhole closure. Dakota is above-ankle length.



## IMPORTANT!

---

The contents of this pattern are copyright protected and belong exclusively to Vikisews. You may use Vikisews patterns for personal use. It is prohibited to share Vikisews patterns and instructions with third parties, as well as to publish patterns and instructions online for public access. **Non-compliance with the mentioned rules is a violation of the US copyright law and may result in civil liability and criminal prosecution.**

You may use Vikisews patterns for commercial use, to sew custom-made garments and/or create fashion collections, on the condition that the patterns are solely used in a manufacturing setting and are not further shared with individuals.

# TOTAL EASE ALLOWANCE

	Bust ease	Waistline ease	Hipline ease	Upper arm ease
cm	32–44.5	50.8–63.4	24.7–36.7	18–21.2
inches	12 5/8–17 1/2	20–25	9 3/4–14 1/2	7 1/8–8 3/8

# GARMENT LENGTH, SLEEVE LENGTH

Height, cm	Center back length, cm	Sleeve length, cm
1 (154–160)	103.8–105.3	72.8–73.9
2 (162–168)	106.8–108.3	74.8–75.9
3 (170–176)	109.8–111.3	76.8–77.9
4 (178–184)	112.8–114.3	78.8–79.9

Height, ft	Center back length, in	Sleeve length, in
1 (5'1"–5'3")	40 7/8–41 1/2	28 5/8–29 1/8
2 (5'4"–5'6")	42–42 5/8	29 1/2–29 7/8
3 (5'7"–5'9")	43 1/4–43 7/8	30 1/4–30 5/8
4 (5'10"–6'1")	44 3/8–45	31–31 1/2

# SUGGESTED FABRIC

To sew this trench coat, choose medium-weight, pliable, soft, non-stretch or low-stretch, and opaque outerwear fabrics made of natural fibers, artificial fibers, blends, or synthetics.

Recommended fabrics: gabardine, denim, dewspo, outerwear fabrics, raincoat fabrics, taslan, cotton.

**Attention!** We do not recommend stretchy, knit fabrics or lightweight sheer fabrics (chiffon, organza, stretch lace).

The trench coat in the photo is made of two types of fabric.

Fabric 1 is gabardine. The fabric is medium weight, pliable, soft, and non-stretch. The fiber content is 57% cotton and 43% tencel. The fabric weight is 200 g/m².

Fabric 2 is outerwear fabric. The fabric is medium weight, pliable, soft, and non-stretch. The fiber content is 100% polyamide. The fabric weight is 150 g/m².

# FABRIC AND NOTIONS REQUIREMENTS

1. Main fabric 1, 140 cm wide, with a directional print/nap, in meters:

Height, cm	Size				
	XS	S	M	L	XL
1 (154–160)	2.15	2.25	2.3	2.5	2.7
2 (162–168)	2.2	2.3	2.35	2.55	2.75
3 (170–176)	2.25	2.35	2.45	2.6	2.8
4 (178–184)	2.3	2.4	2.5	2.7	2.85

Main fabric 1, 55" wide, with a directional print/nap, in yards:

Height, ft	Size				
	XS	S	M	L	XL
1 (5'1"–5'3")	2 3/8	2 1/2	2 1/2	2 3/4	3
2 (5'4"–5'6")	2 3/8	2 1/2	2 5/8	2 3/4	3
3 (5'7"–5'9")	2 1/2	2 5/8	2 5/8	2 7/8	3
4 (5'10"–6'1")	2 1/2	2 5/8	2 3/4	3	3 1/8

2. Main fabric 2, 140 cm wide with a directional print/nap, in meters:

Height, cm	Size				
	XS	S	M	L	XL
1 (154–160)	2.5	2.65	2.8	2.85	2.95
2 (162–168)	2.55	2.7	2.85	2.9	3
3 (170–176)	2.6	2.75	2.9	2.95	3.05
4 (178–184)	2.65	2.8	2.95	3	3.1

Main fabric 2, 55" wide, with a directional print/nap, in yards:

Height, ft	Size				
	XS	S	M	L	XL
1 (5'1"–5'3")	2 3/4	2 7/8	3	3 1/8	3 1/4
2 (5'4"–5'6")	2 3/4	3	3 1/8	3 1/8	3 1/4
3 (5'7"–5'9")	2 7/8	3	3 1/8	3 1/4	3 3/8
4 (5'10"–6'1")	2 7/8	3	3 1/4	3 1/4	3 3/8

3. Lining fabric, 140 cm (55") wide, with a directional print — 0.3 m (3/8 yd)
4. Lightweight interfacing, knit or woven, 140 cm (55") wide, for all sizes in all heights — 0.5 m (1/2 yd)
5. Stitched bias-cut fusible stay tape with stitch reinforcement, 1 cm (3/8") wide — 2.6 m (2 7/8 yd)

**IMPORTANT!** When purchasing fabric, please account for shrinkage and buy 5% more than required.

6. Elastic, 2 cm (3/4") wide, depending on the size (the exact elastic length is specified in the pattern):

Size	XS	S	M	L	XL
cm	43	44	45	46.5	47.5
inches	16 7/8	17 3/8	17 3/4	18 1/4	18 3/4

7. Seven buttons, 2.3–2.5 cm (7/8–1") in diameter, for fabric 1
8. Five buttons, 2.3–2.5 cm (7/8–1") in diameter, for fabric 2
9. Two set-in snaps, 12 mm (1/2") in diameter
10. Two grommets, 5 mm (just under 1/4") in diameter
11. Two drawstring tips
12. Two metal zippers for pockets on fabric 2, 20–25 cm (7 7/8–9 7/8") long
13. Matching thread for fabric 1 — 5 spools (1 spool for the sewing machine + 4 spools for the overlocker)
14. Matching thread for fabric 2 — 5 spools (1 spool for the sewing machine + 4 spools for the overlocker)
15. Matching topstitching thread for fabric 1 (e.g., Madeira No. 35) — 2 spools
16. Matching topstitching thread for fabric 2 (e.g., Madeira No. 35) — 2 spools

## TOOLS AND EQUIPMENT

- sewing machine for construction
- overlocker for finishing raw edges. This may be replaced with a stretch overlock stitch or a zigzag stitch on the sewing machine (overlock or zigzag stitch width 2–3 mm, stitch length 2.5 mm)
- buttonhole foot for the sewing machine
- stitch-in-the-ditch foot for the sewing machine (optional)
- one-sided foot for the sewing machine
- elastic threader (may be replaced with a safety pin)
- loop turner
- hole puncher or awl
- press tool and molds for installing grommets and snaps.

# PATTERN PIECES LIST

---

## 1. From main fabric:

- front — cut 2
- back — cut 2
- front sleeve — cut 2
- back sleeve — cut 2
- buttonhole welt — cut 2 (5 pcs)
- collar — cut 2
- collar stand — cut 2
- outer pocket welt — cut 2
- outer pocket facing — cut 2
- sleeve tab — cut 4

## 2. From main fabric 2:

- front — cut 2
- back — cut 2
- front sleeve — cut 2
- back sleeve — cut 2
- buttonhole welt — cut 2 (5 pcs)
- hood side panel — cut 4
- hood center panel — cut 2
- hood tie — cut 1
- inner pocket welt — cut 4
- inner pocket reinforcement — cut 2
- inner pocket top lining — cut 2
- inner pocket bottom lining — cut 2

### Additionally, cut the following from main fabric 2:

- two 2 x 2 cm (3/4" x 3/4") square pieces to reinforce the grommet placement on the hood side panel pieces
- five 4 x 3.5 cm (1 5/8" x 1 3/8") rectangular pieces to reinforce the bound buttonhole placement on the front piece

## 3. From lining fabric:

- outer pocket top lining — cut 2
- outer pocket bottom lining — cut 2

**IMPORTANT!** Don't forget to transfer all pattern markings and notches onto the fabric.

## 4. From interfacing (for fabric 1):

- collar — cut 2
- collar stand — cut 2
- outer pocket welt — cut 2
- sleeve tab — cut 2

### Additionally, cut the following from interfacing:

- two strips (width and length according to the pattern) to interface the pocket opening on the front pieces
- five 4 x 3.5 cm (1 5/8" x 1 3/8") rectangular pieces to reinforce the bound buttonhole placement
- two strips (width and length according to the pattern) to interface the hem allowance on the front pieces
- two strips (width and length according to the pattern) to interface the hem allowance on the back pieces
- two strips (width and length according to the pattern) to interface the hem allowance on the front sleeve pieces
- two strips (width and length according to the pattern) to interface the hem allowance on the back sleeve pieces

The interfacing strips should be cut on the straight grain (parallel to the selvedge).

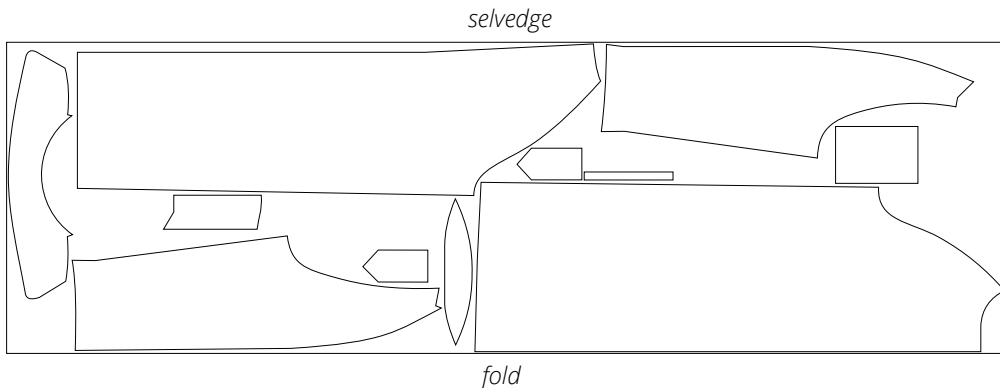
\_\_\_\_\_

garment hem allowance 4 cm (1 5/8")

- Take this into account when laying out the pattern pieces on the fabric.

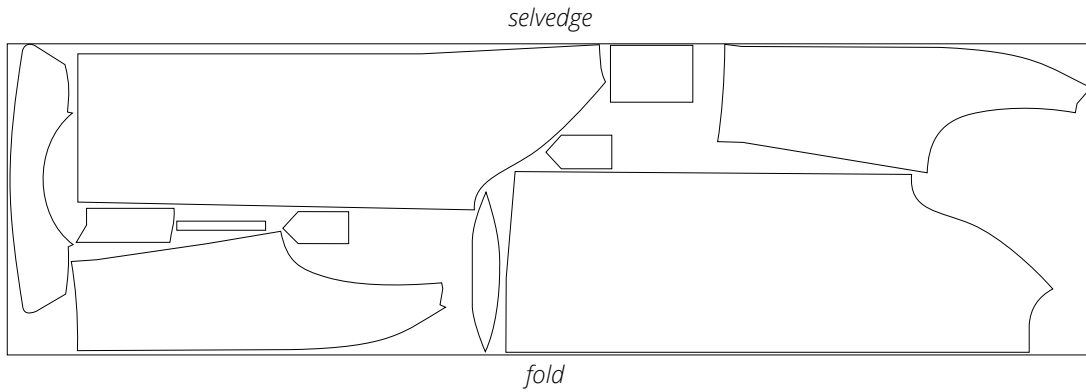
\_\_\_\_\_

Main fabric 1, 140 cm (55") wide, with a directional print/nap, cut on fold, for size XS in all heights

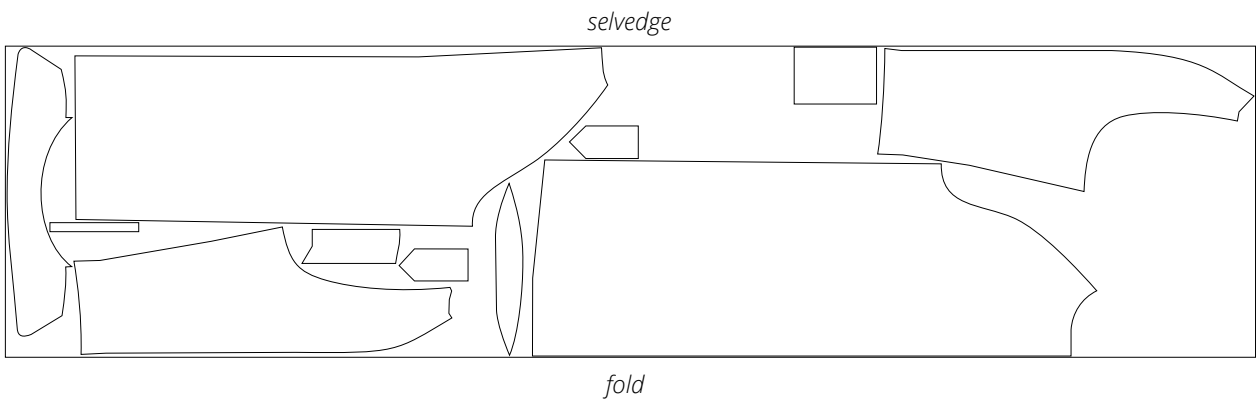




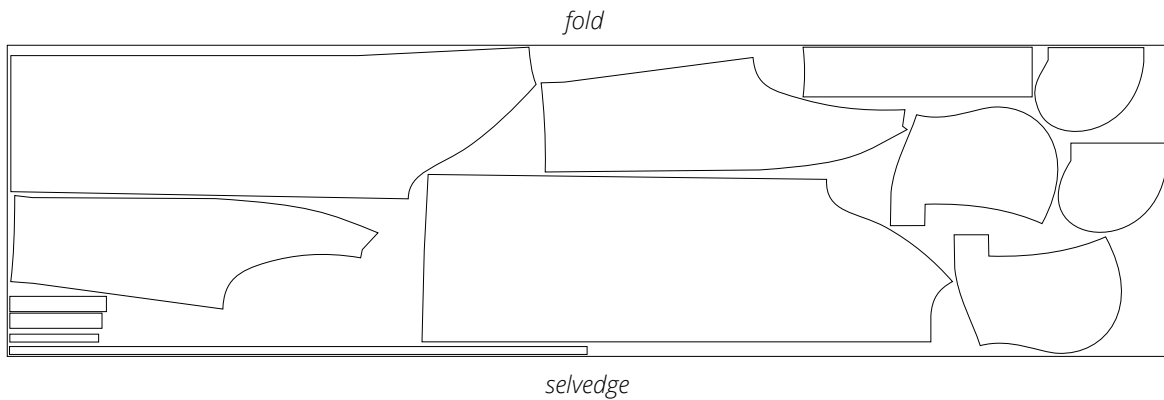
Main fabric 1, 140 cm (55") wide, with a directional print/nap,  
cut on fold, for sizes S-M in all heights



Main fabric 1, 140 cm (55") wide, with a directional print/nap,  
cut on fold, for sizes L-XL in all heights

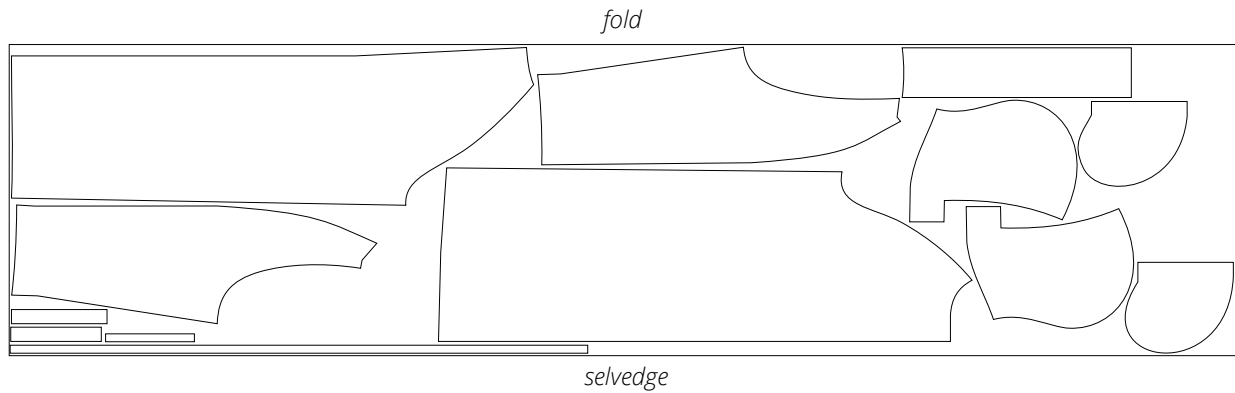


Main fabric 2, 140 cm (55") wide, with a directional print/nap,  
cut on fold, for size XS in all heights



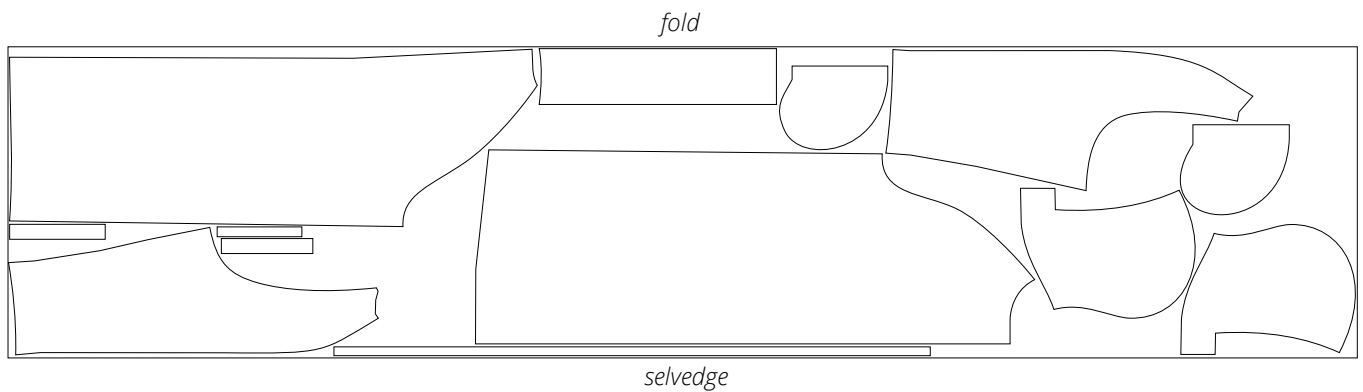
**Attention!** Cut only one hood tie piece.

Main fabric 2, 140 cm (55") wide, with a directional print/nap,  
cut on fold, for size S in all heights



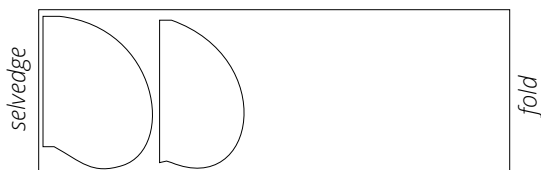
Attention! Cut only one hood tie piece.

Main fabric 2, 140 cm (55") wide, with a directional print/nap,  
cut on fold, for sizes M-XL in all heights

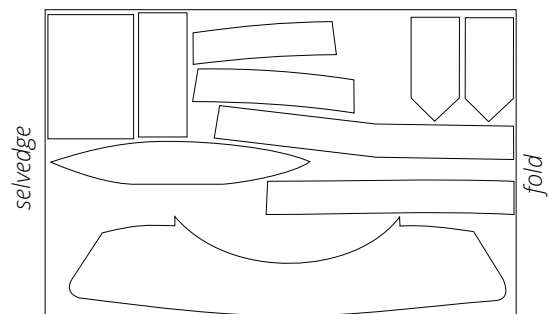


Attention! Cut only one hood tie piece.

Lining fabric, 140 cm (55") wide, with a  
directional print, cut on fold, for all  
sizes in all heights



Interfacing, 140 cm (55") wide, cut in  
one direction and on fold, for all sizes  
in all heights



**READY? LET'S GET SEWING!**

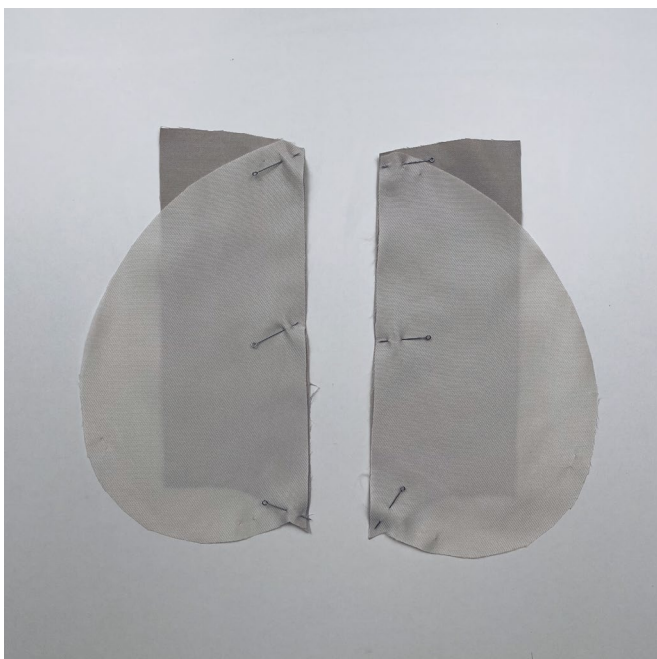


Working on the right side, topstitch at 1 mm and 6 mm (1/4") from the welt fold. The lower stitching line is shorter than the upper one by 6 mm (1/4") on both sides.

Do not backstitch. Use a 4 mm stitch length.



Press the seams. Pass the thread tails to the wrong side, tie them into knots, and then hide between the fabric layers using a needle.



Place the outer pocket top lining and outer pocket facing pieces right sides together. Align the edges, match the notches, and pin.