

FROM THE FOUNDER OF THE #VIKISEWS BRAND

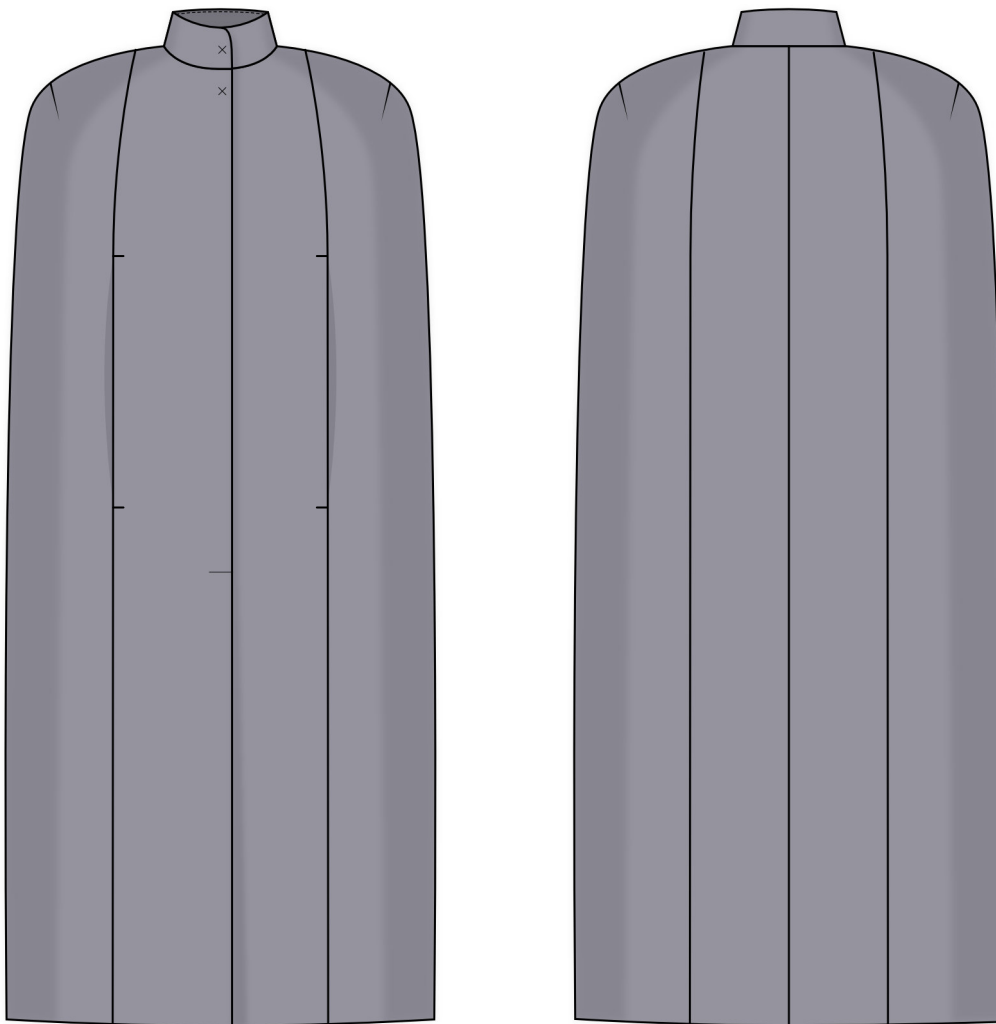


Back in 2016, when I was working on my first set of sewing instructions, I was trying to write them in such a way that even a complete beginner could easily understand and use them to create their very first garment. These instructions laid the foundation for the Vikisews brand, its vision and its mission. I wanted to create modern patterns with the utmost detailed and clear instructions.

Now, with each new collection we are constantly improving our instructions, amending them and adding more relevant details. By the time the final product reaches you, our drafters, correctors, and editors would have spent weeks perfecting every word and every photograph. If you compile a few of our instructions together, you will get a sewing manual that will assist you in sewing all kinds of garments at any difficulty level.

And I would be very happy if these instructions helped you to turn your hobby into a lifelong passion... Enjoy the process! Create your ultimate dream wardrobe! Wear your garments proudly for years to come!

If you have any questions, please contact us at info@vikisews.com — we are always there to help.



CLEMENTINE PATTERN DESCRIPTION

Clementine is a semi-fitted, straight-cut cape coat. It is fitted with princess seams and shoulder darts. The front princess seams feature slits for the arms. The stand collar fastens with a sew-on snap. The cape coat is fully lined and has a hidden button and buttonhole closure at the center front. Clementine is above-ankle length.



IMPORTANT!

The contents of this pattern are copyright protected and belong exclusively to Vikisews. You may use Vikisews patterns for personal use. It is prohibited to share Vikisews patterns and instructions with third parties, as well as to publish patterns and instructions online for public access. **Non-compliance with the mentioned rules is a violation of the US copyright law and may result in civil liability and criminal prosecution.**

You may use Vikisews patterns for commercial use, to sew custom-made garments and/or create fashion collections, on the condition that the patterns are solely used in a manufacturing setting and are not further shared with individuals.

GARMENT LENGTH

Height, cm	Back length, cm	Height, ft	Back length, in
1 (154–160)	124	1 (5'1"–5'3")	48 7/8
2 (162–168)	128	2 (5'4"–5'6")	50 3/8
3 (170–176)	132	3 (5'7"–5'9")	52
4 (178–184)	136	4 (5'10"–6'1")	53 1/2

SUGGESTED FABRIC

To sew this cape coat, choose medium-weight, soft, non-stretch, and structured coating fabrics made of natural fibers, artificial fibers, blends, or synthetics.

The following fabrics are recommended: wool, wool coating, cashmere, melton wool.

Choose plain-colored or mélange fabrics, with short or medium pile or without pile.

Attention! We do not recommend lightweight or loosely woven fabrics.

For the lining, we recommend lining fabrics made of artificial fibers, synthetic fibers, or blends.

The cape coat in the photo is made of coating wool with medium pile. The fabric is medium weight, soft, low-stretch. The fiber content is 100% wool. The fabric weight is 470 g/m².

The fiber content of the lining is a blend of viscose (45%) and polyester (55%). The fabric weight is 100 g/m².

FABRIC AND NOTIONS REQUIREMENTS

1. Main fabric, 140 cm wide, with a directional print/nap, in meters:

Height, cm	Size		
	34-44	46-50	52
1 (154-160)	2.75	2.8	2.85
2 (162-168)	2.8	2.85	2.95
3 (170-176)	2.9	2.9	3
4 (178-184)	2.95	3	3.1

Main fabric, 55" wide, with a directional print/nap, in yards:

Height, ft	Size		
	34-44	46-50	52
1 (5'1"-5'3")	3	3	3 1/8
2 (5'4"-5'6")	3	3 1/8	3 1/4
3 (5'7"-5'9")	3 1/8	3 1/8	3 1/4
4 (5'10"-6'1")	3 1/4	3 1/4	3 3/8

2. Lining fabric, 140 cm wide, with a directional print, in meters:

Height, cm	Size				
	34	36-38	40	42-46	48-52
1 (154-160)	2.65	2.7	2.7	2.7	2.7
2 (162-168)	2.75	2.75	2.75	2.8	2.8
3 (170-176)	2.8	2.85	2.85	2.85	2.9
4 (178-184)	2.9	2.9	2.95	2.95	2.95

Lining fabric, 55" wide, with a directional print, in yards:

Height, ft	Size				
	34	36-38	40	42-46	48-52
1 (5'1"-5'3")	2 7/8	3	3	3	3
2 (5'4"-5'6")	3	3	3	3	3
3 (5'7"-5'9")	3	3 1/8	3 1/8	3 1/8	3 1/8
4 (5'10"-6'1")	3 1/8	3 1/8	3 1/4	3 1/4	3 1/4

IMPORTANT! When purchasing fabric, please account for shrinkage and buy 5% more than required.

3. Lightweight interfacing, knit or woven, 140 cm (55") wide, for all sizes in all heights — 1.5 m (1 5/8 yd)
4. Stitched bias-cut fusible stay tape with stitch reinforcement, 1.5 cm (5/8") wide — 5.3 m (5 3/4 yd)
5. Two sew-on snaps, 2–2.3 cm (3/4–7/8") in diameter
6. Six buttons, 2–2.3 cm (3/4–7/8") in diameter
7. One pair of raglan shoulder pads
8. Matching thread — 2 spools

TOOLS AND EQUIPMENT

- sewing machine for construction
- buttonhole foot for the sewing machine

PATTERN PIECES LIST

1. From main fabric:

- front — cut 2
- back — cut 1 on fold
- side — cut 2
- stand collar — cut 2
- slit facing — cut 2
- front facing — cut 2
- back neck facing — cut 1

2. From lining fabric:

- front lining — cut 2
- back lining — cut 1 on fold
- side lining — cut 2
- placket lining — cut 2

3. From interfacing:

- stand collar— cut 2
- slit facing— cut 2
- front facing — cut 2
- back neck facing — cut 1

IMPORTANT! Don't forget to transfer all pattern markings and notches onto the fabric.

Partially interface the following:

Interface the hem allowances on the front, back, and side pieces with strips, 8 cm (3 1/8") wide (length according to the pattern).

SEAM ALLOWANCES

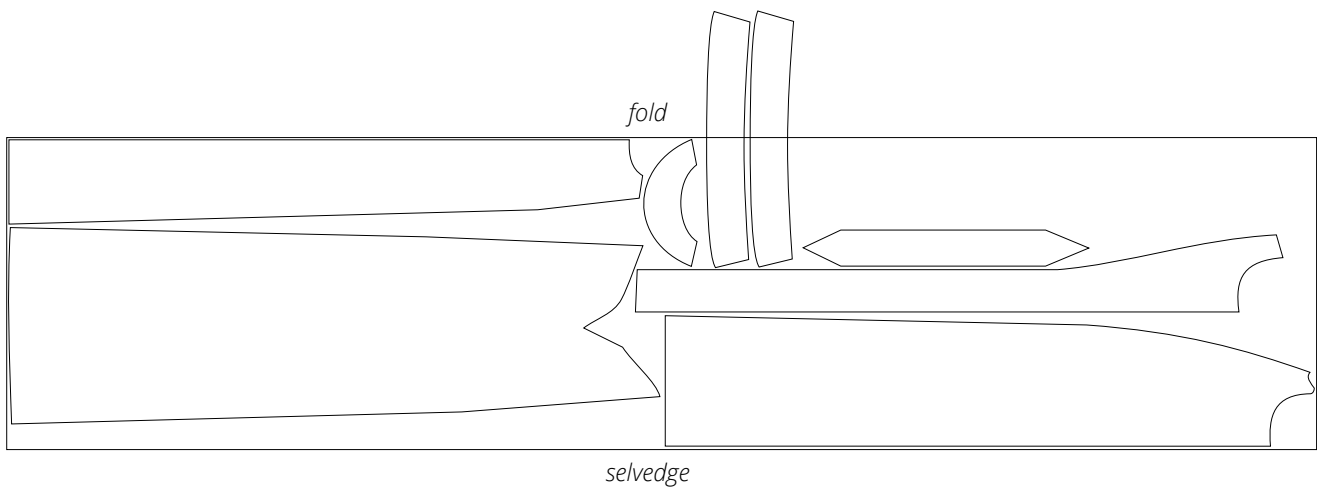
All pattern pieces include seam allowances as follows:

- garment hem allowance — 4 cm (1 5/8")
- all other edges — 1 cm (3/8")

Take this into account when laying out the pattern pieces on the fabric.

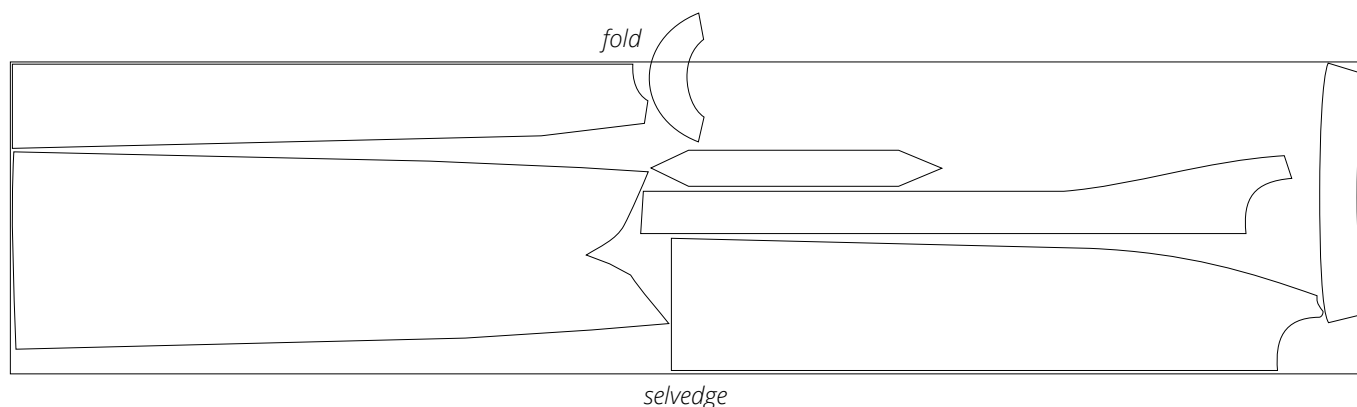
CUTTING LAYOUT

Main fabric, 140 cm (55") wide, with a directional print/nap, cut on fold, for sizes 34–50 in all heights



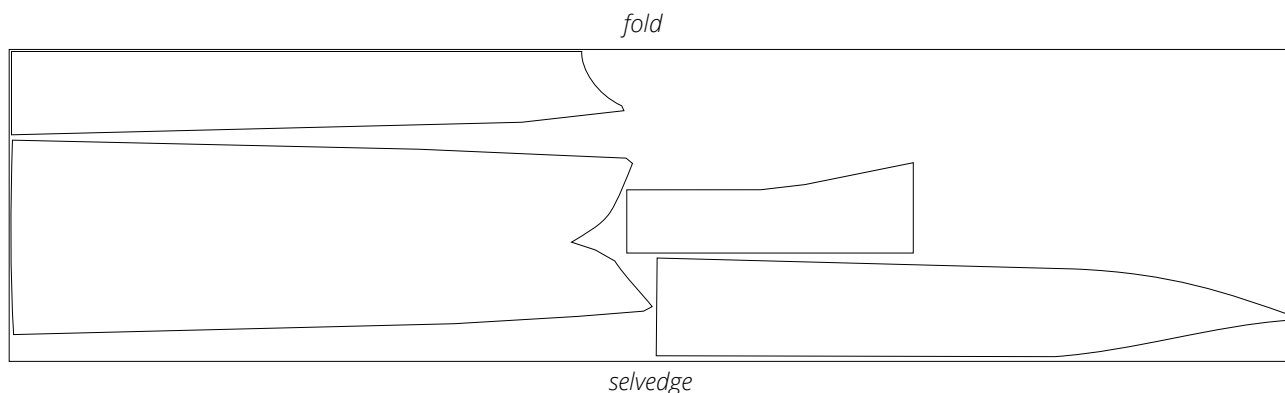
Attention! Cut the stand collar pieces on a single layer out of the leftover fabric. Cut only one back neck facing piece.

Main fabric, 140 cm (55") wide, with a directional print/nap,
cut on fold, for size 52 in all heights

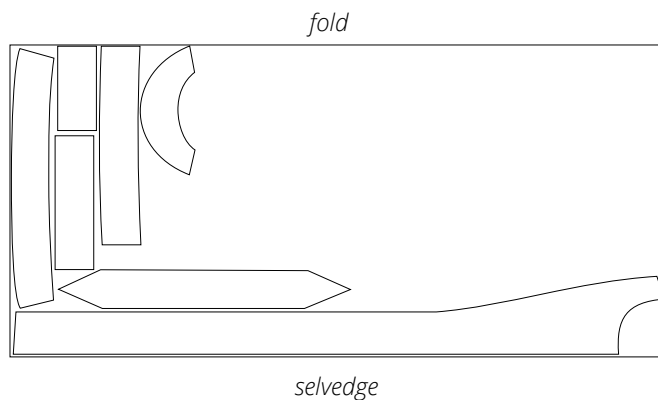


Attention! Cut only one back neck facing piece on a single layer
out of the leftover fabric.

Lining fabric, 140 cm (55") wide, with a directional print,
cut on fold, for all sizes in all heights



Interfacing, 140 cm (55") wide, cut on fold,
for all sizes in all heights



Attention! Cut only one back neck facing piece.

READY? LET'S GET SEWING!



Carefully form a pleat on the lining and press.



The photo shows the result from the right side.



Align the folded edges of the placket and secure them with diagonal hand stitches.