

FROM THE FOUNDER OF THE #VIKISEWS BRAND

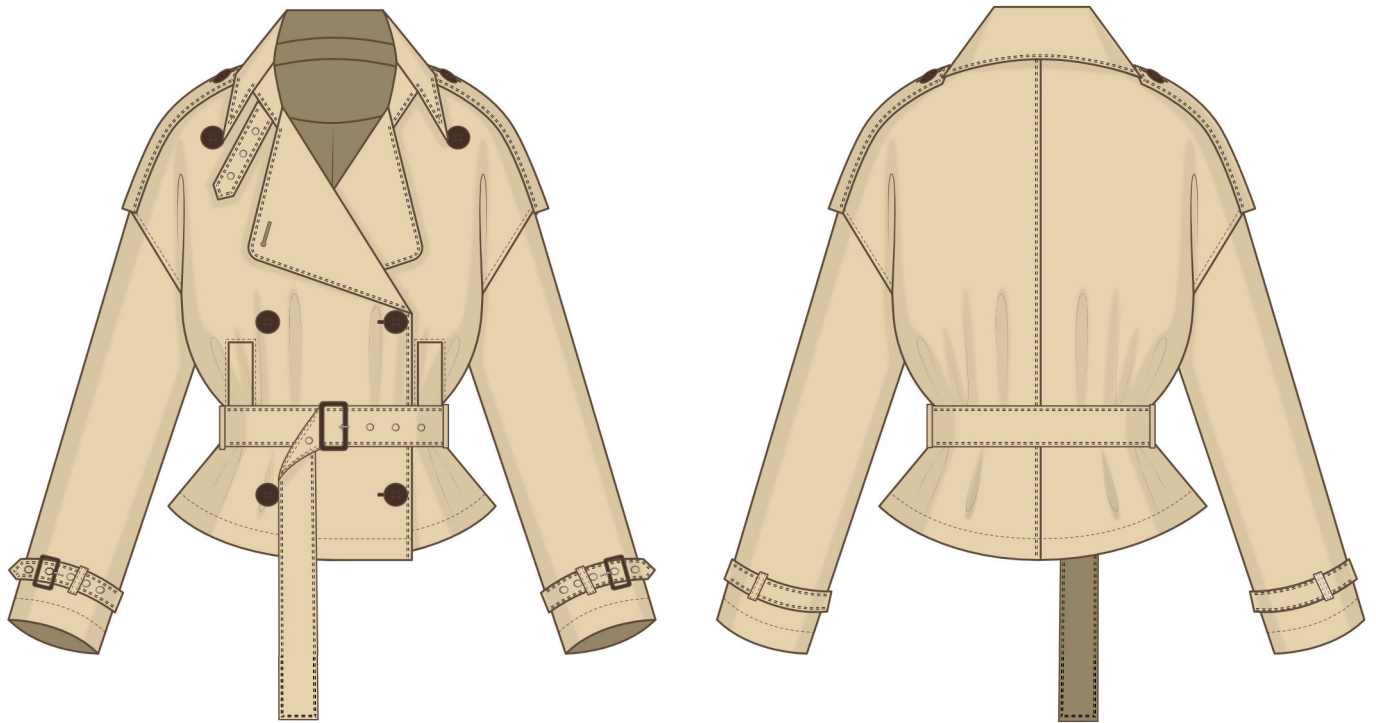


Back in 2016, when I was working on my first set of sewing instructions, I was trying to write them in such a way that even a complete beginner could easily understand and use them to create their very first garment. These instructions laid the foundation for the Vikisews brand, its vision and its mission. I wanted to create modern patterns with the utmost detailed and clear instructions.

Now, with each new collection we are constantly improving our instructions, amending them and adding more relevant details. By the time the final product reaches you, our drafters, correctors, and editors would have spent weeks perfecting every word and every photograph. If you compile a few of our instructions together, you will get a sewing manual that will assist you in sewing all kinds of garments at any difficulty level.

And I would be very happy if these instructions helped you to turn your hobby into a lifelong passion... Enjoy the process! Create your ultimate dream wardrobe! Wear your garments proudly for years to come!

If you have any questions, please contact us at info@vikisews.com — we are always there to help.



SPENSA PATTERN DESCRIPTION

Spensa is a loose-fitting, fully lined jacket with a straight silhouette. The front features two welt pockets with sewn-in ends. The back has a center seam. The jacket features drop shoulders and a double-breasted button and buttonhole closure. The loose-fitting one-piece sleeves have topstitched loops and detachable tabs at the bottom. The jacket features a turn-down collar with a collar stand. There are belt loops at the side seams. The sleeve tabs, collar stand, and detachable belt have grommets and fasten with buckles. The jacket, tabs, and belt feature decorative topstitching. Spensa is above-hip length.



IMPORTANT!

The contents of this pattern are copyright protected and belong exclusively to Vikisews. You may use Vikisews patterns for personal use. It is prohibited to share Vikisews patterns and instructions with third parties, as well as to publish patterns and instructions online for public access. **Non-compliance with the mentioned rules is a violation of the US copyright law and may result in civil liability and criminal prosecution.**

You may use Vikisews patterns for commercial use, to sew custom-made garments and/or create fashion collections, on the condition that the patterns are solely used in a manufacturing setting and are not further shared with individuals.

TOTAL EASE ALLOWANCE

	Bust ease	Waistline ease	Hipline ease	Upper arm ease
cm	53–45	67.3–59.1	40.1– 31	25.8–21.2
inches	20 7/8–17 3/4	26 1/2–23 1/4	15 3/4–12 1/4	10 1/8–8 3/8

GARMENT LENGTH, SLEEVE LENGTH

Height, cm	Center back length, cm	Sleeve length including shoulder width, cm
1 (154–160)	55.3–58.6	74.2–78.8
2 (162–168)	58.3–61.6	76.2–80.8
3 (170–176)	61.3–64.6	78.2–82.8
4 (178–184)	64.3–67.6	80.2–84.8

Height, ft	Center back length, in	Sleeve length including shoulder width, in
1 (5'1"–5'3")	21 3/4–23 1/8	29 1/4–31
2 (5'4"–5'6")	23–24 1/4	30–31 3/4
3 (5'7"–5'9")	24 1/8–25 3/8	30 3/4–32 5/8
4 (5'10"–6'1")	25 3/8–26 5/8	31 5/8–33 3/8

SUGGESTED FABRIC

To sew this jacket, choose medium-weight, soft, non-stretch, and opaque outerwear fabrics made of natural fibers, artificial fibers, blends, or synthetics.

The following fabrics are recommended: outerwear fabrics, raincoat fabrics, gabardine, denim.

For the lining, we recommend lining fabrics made of artificial fibers (viscose), blends (viscose + elastane, viscose + polyester), and synthetics (polyester, polyester + elastane).

The jacket in the photo is made of outerwear fabric. The fabric is medium weight, soft, and low-stretch. The fiber content is 70% cotton and 30% polyester. The fabric weight is 260 g/m².

The fiber content of the lining is 100% viscose. The fabric weight is 95 g/m².

FABRIC AND NOTIONS REQUIREMENTS

1. Main fabric, 140 cm wide, with a directional print/nap, 180–260 g/m² in meters:

Height, cm	Size				
	XS	S	M	L	XL
1 (154–160)	2.5	2.55	2.6	2.7	2.95
2 (162–168)	2.6	2.65	2.7	2.75	3.05
3 (170–176)	2.7	2.75	2.8	2.85	3.15
4 (178–184)	2.75	2.9	2.85	2.95	3.25

Main fabric, 55" wide, with a directional print/nap, 180–260 g/m², in yards:

Height, ft	Size				
	X	S	M	L	XL
1 (5'1"–5'3")	2 3/4	2 3/4	2 7/8	3	3 1/4
2 (5'4"–5'6")	2 7/8	2 7/8	3	3	3 3/8
3 (5'7"–5'9")	3	3	3	3 1/8	3 1/2
4 (5'10"–6'1")	3	3 1/8	3 1/8	3 1/4	3 1/2

2. Lining fabric, 140 cm wide, 90–110 g/m², in meters:

Height, cm	Size			
	XS-S	M	L	XL
1 (154–160)	1.3	1.35	1.4	1.45
2 (162–168)	1.35	1.4	1.45	1.5
3 (170–176)	1.4	1.45	1.5	1.6
4 (178–184)	1.45	1.5	1.55	1.65

Lining fabric, 55" wide, 90–110 g/m², in yards:

Height, ft	Size			
	XS-S	M	L	XL
1 (5'1"–5'3")	1 3/8	1 1/2	1 1/2	1 5/8
2 (5'4"–5'6")	1 1/2	1 1/2	1 5/8	1 5/8
3 (5'7"–5'9")	1 1/2	1 5/8	1 5/8	1 3/4
4 (5'10"–6'1")	1 5/8	1 5/8	1 3/4	1 3/4

IMPORTANT! When purchasing fabric, please account for shrinkage and buy 5% more than required.

3. Lightweight interfacing, knit or woven, 140 cm (55") wide, 40 g/m², for all heights:

Size	XS	S	M	L	XL
cm	1.85	1.9	2	2.05	2.1
inches	2	2 1/8	2 1/8	2 1/4	2 1/4

4. Stitched bias-cut fusible stay tape with stitch reinforcement, 1.5 cm (5/8") wide — 1.97–2.29 m (2 1/8–2 1/2 yd)

5. One 5 cm (2") wide (inner width) prong buckle for the belt

6. Three 3.5 cm (1 3/8") wide (inner width) prong buckles for the tabs

7. Nine buttons, 2.2–2.5 cm (7/8–1") in diameter

8. Twenty-six metal grommets, 5 mm (just under 1/4") in diameter

9. Matching thread — 5 spools (1 spool for the sewing machine + 4 spools for the overlocker)

10. Matching topstitching thread (e.g., Madeira No. 35) — 2 spools

TOOLS AND EQUIPMENT

- sewing machine for construction
- overlocker for finishing raw edges. This may be replaced with a stretch overlock stitch or a zigzag stitch on the sewing machine (overlock or zigzag stitch width 2–3 mm, stitch length 2.5 mm)
- buttonhole foot for the sewing machine
- stitch-in-the-ditch foot for the sewing machine (optional)
- one-sided foot for the sewing machine
- grommet press tool with a set of molds

PATTERN PIECES LIST

1. From main fabric:

- front — cut 2
- back — cut 2
- sleeve — cut 2
- collar — cut 2
- collar stand — cut 2
- back neck facing — cut 1 on fold
- front facing — cut 2
- pocket facing— cut 2
- welt — cut 2
- epaulet— cut 4
- collar tab — cut 2
- buckle tab— cut 2
- sleeve tab — cut 4
- belt — cut 2
- sleeve tab loops— cut 1 (4 pcs)
- epaulet loops— cut 1 (2 pcs)
- belt loops — cut 1 (2 pcs)

2. From lining fabric:

- front lining — cut 2
- back lining — cut 1 on fold
- sleeve lining — cut 2
- top pocket lining — cut 2
- bottom pocket lining — cut 2

3. From interfacing:

- collar — cut 2
- collar stand — cut 2
- back neck facing — cut 1 on fold
- front facing — cut 2
- pocket facing— cut 2
- welt — cut 2
- epaulet— cut 2
- collar tab — cut 1
- buckle tab— cut 1
- sleeve tab — cut 2
- belt — cut 2

IMPORTANT! Don't forget to transfer all pattern markings and notches onto the fabric.

Additionally, cut the following from interfacing:

- two strips (length according to the pattern) to interface the pocket opening. The interfacing strips should be cut on the straight grain (parallel to the selvedge)
- pieces to interface the shoulder area on the front and back, as indicated on the pattern

SEAM ALLOWANCES

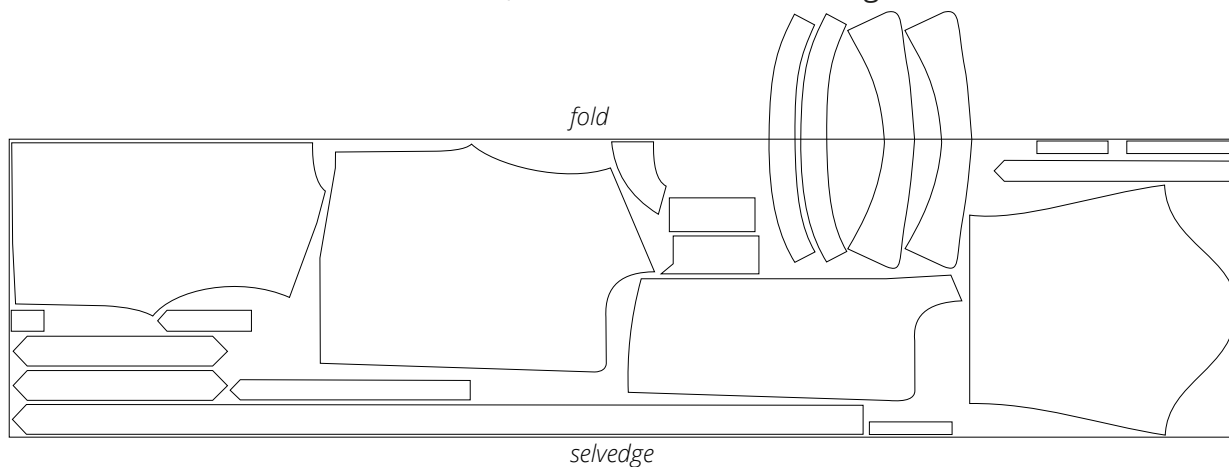
All pattern pieces include seam allowances as follows:

- garment hem allowance — 4 cm (1 5/8")
- sleeve hem allowance — 4 cm (1 5/8")
- pocket lining edges— 1.5 cm (5/8")
- all other edges — 1 cm (3/8")

Take this into account when laying out the pattern pieces on the fabric.

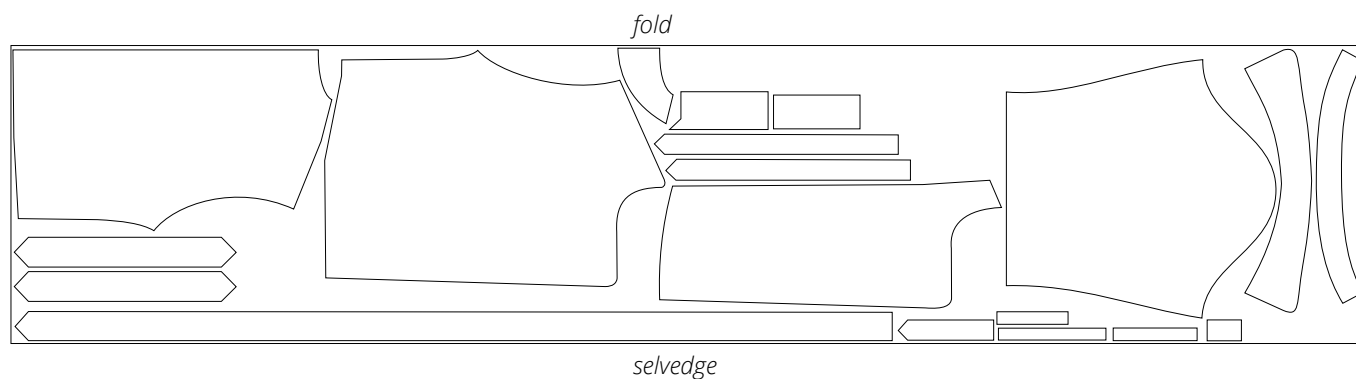
CUTTING LAYOUT

Main fabric, 140 cm (55") wide, with a directional print/nap, cut on fold, for sizes XS-L in all heights



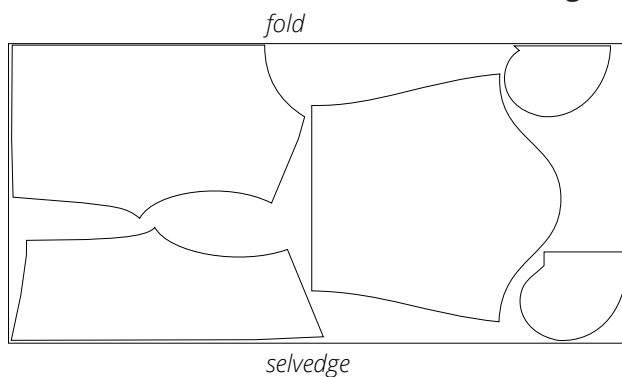
Attention! The collar stand and collar pieces are cut on fold, two of each. The sleeve tab loops, epaulet loops, and belt loops pieces are cut one each.

Main fabric, 140 cm (55") wide, with a directional print/nap, cut on fold, for size XL in all heights

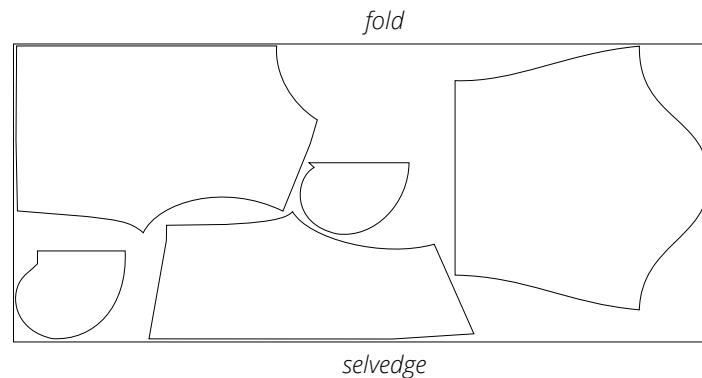


Attention! The sleeve tab loops, epaulet loops, and belt loops pieces are cut one each.

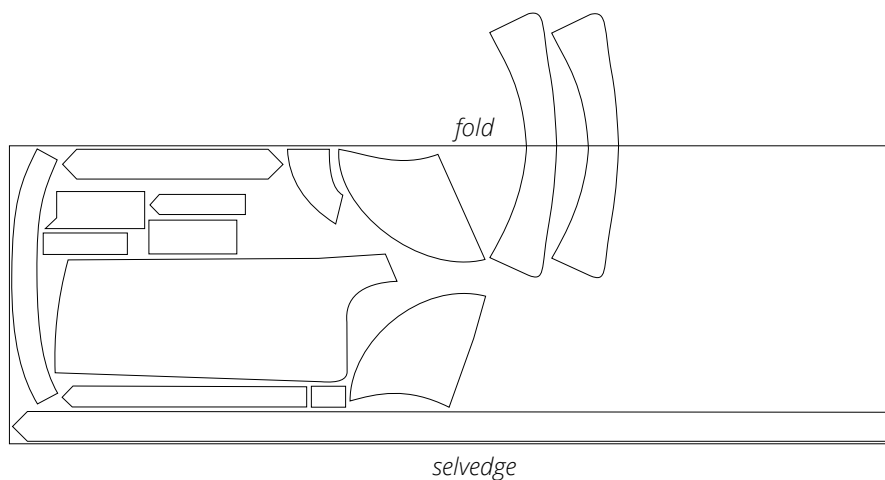
Lining fabric, 140 cm (55") wide, with a directional print cut on fold, for sizes XS-M in all heights



Lining fabric, 140 cm (55") wide, with a directional print,
cut on fold, for sizes L-XL in all heights

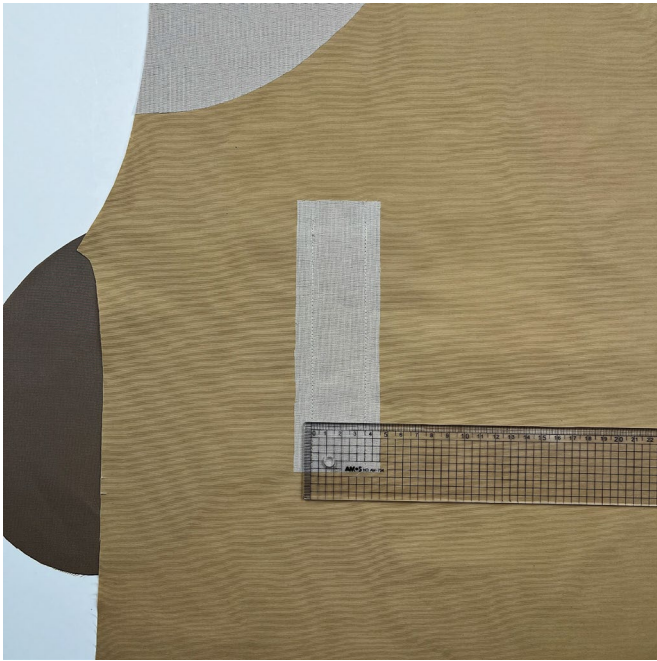


Interfacing, 140 cm (55") wide, cut on fold,
for all sizes in all heights



Attention! The collar tab and buckle tab pieces are cut one each.
The collar piece is cut on fold twice.

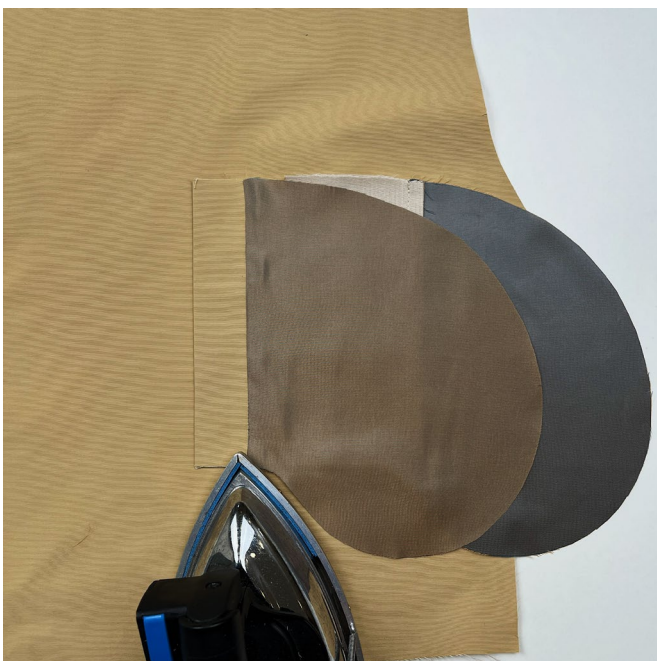
READY? LET'S GET SEWING!



Turn the front piece wrong side up and check whether the two stitching lines are parallel. The seams should start and end at the same level.



Place the bottom pocket lining piece right side down to the wrong side of the welt piece. Align the edges and pin. Machine-stitch exactly over the welt seam, backstitching at the beginning and end of the seam.



Fold the bottom pocket lining piece right side up and press the seam.