

FROM THE FOUNDER OF THE #VIKISEWS BRAND

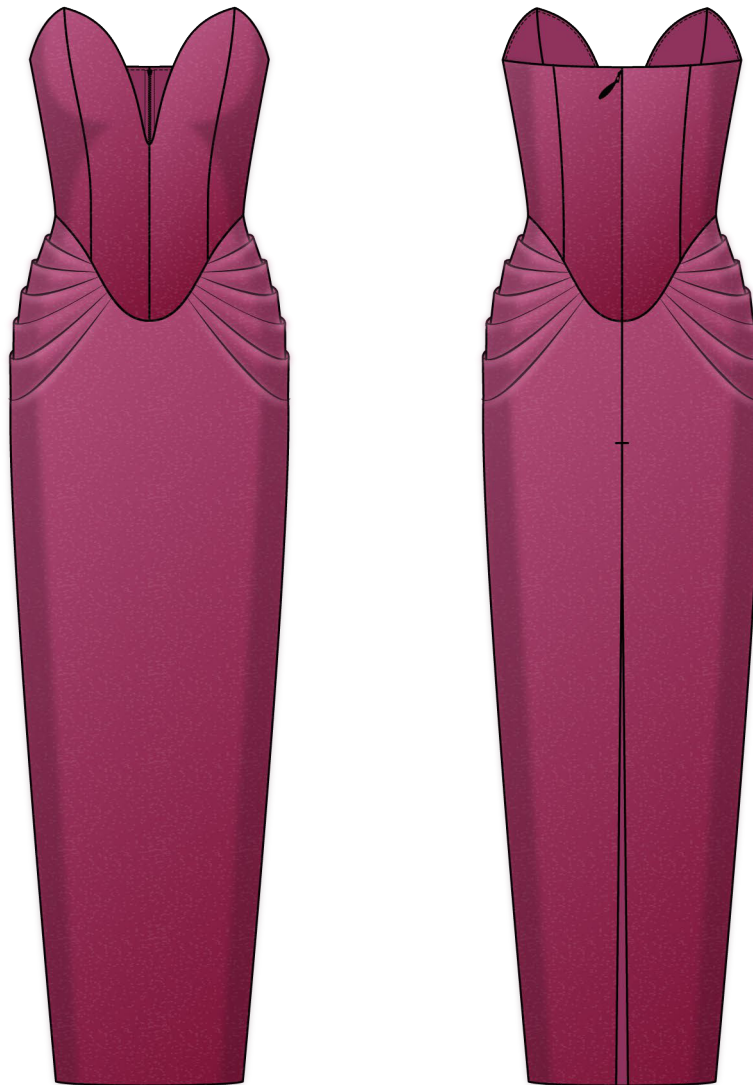


Back in 2016, when I was working on my first set of sewing instructions, I was trying to write them in such a way that even a complete beginner could easily understand and use them to create their very first garment. These instructions laid the foundation for the Vikisews brand, its vision and its mission. I wanted to create modern patterns with the utmost detailed and clear instructions.

Now, with each new collection we are constantly improving our instructions, amending them and adding more relevant details. By the time the final product reaches you, our drafters, correctors, and editors would have spent weeks perfecting every word and every photograph. If you compile a few of our instructions together, you will get a sewing manual that will assist you in sewing all kinds of garments at any difficulty level.

And I would be very happy if these instructions helped you to turn your hobby into a lifelong passion... Enjoy the process! Create your ultimate dream wardrobe! Wear your garments proudly for years to come!

If you have any questions, please contact us at info@vikisews.com — we are always there to help.



MERCEDES PATTERN DESCRIPTION

Mercedes is a close-fitting corset-style dress with an accentuated waist due to the shaped waist seam. The front and back are fitted with princess seams. All the front and back bodice seams are stiffened with rigilene boning. The low neckline features a V-wire separator. The skirt of the dress is pleated at the hips. The bodice of the dress is lined. Mercedes has an invisible zipper closure in the center back seam and is above-ankle length.



IMPORTANT!

The contents of this pattern are copyright protected and belong exclusively to Vikisews. You may use Vikisews patterns for personal use. It is prohibited to share Vikisews patterns and instructions with third parties, as well as to publish patterns and instructions online for public access. **Non-compliance with the mentioned rules is a violation of the US copyright law and may result in civil liability and criminal prosecution.**

You may use Vikisews patterns for commercial use, to sew custom-made garments and/or create fashion collections, on the condition that the patterns are solely used in a manufacturing setting and are not further shared with individuals.

TOTAL EASE ALLOWANCE

	Bust ease (estimated)	Waistline ease	Hipline ease
cm	-2.2 to -1.5	0	4.1–7.7
inches	- 7⁄8 to - 5⁄8	0	1 5⁄8–3

GARMENT LENGTH

Height, cm	Back length from waist down, cm
1 (154–160)	86.3–88.5
2 (162–168)	89.3–91.5
3 (170–176)	92.3–94.5
4 (178–184)	95.3–97.5

Height, ft	Back length from waist down, in
1 (5'1"–5'3")	34–34 7⁄8
2 (5'4"–5'6")	35 1⁄8–36
3 (5'7"–5'9")	36 3⁄8–37 1⁄4
4 (5'10"–6'1")	37 1⁄2–38 3⁄8

SUGGESTED FABRIC

To sew this dress, choose medium-weight, pliable, soft, non-stretch, and structured dress-weight fabrics made of natural, artificial, blended, or synthetic fibers.

The following fabrics are recommended: velvet, velour, matte satin (Peau de Soie), cady.

For the lining, choose lining fabrics made of blended or synthetic fibers.

Attention! We do not recommend stretchy fabrics (knits or stretch velvet), or lightweight sheer fabrics (chiffon, organza, stretch lace, or lightweight satin).

The dress in the photo is made of silk velvet. The fabric is medium weight, pliable, soft, and non-stretch. The fiber content is 82% viscose + 18% silk (100% silk ground + 100% viscose pile).

The fabric weight is 240 g/m².

The lining is made of 100% viscose. The fabric weight is 100 g/m².

FABRIC AND NOTIONS REQUIREMENTS

1. Main fabric, 140 cm wide, with a directional print/nap, in meters:

Height, cm	Size					
	34-36	38-40	42-46	48	50	52
1 (154-160)	1.15	1.2	1.35	1.4	1.55	1.6
2 (162-168)	1.2	1.25	1.4	1.45	1.6	1.65
3 (170-176)	1.25	1.25	1.45	1.5	1.65	1.7
4 (178-184)	1.25	1.3	1.55	1.55	1.7	1.75

Main fabric, 55" wide, with a directional print/nap, in yards:

Height, ft	Size					
	34-36	38-40	42-46	48	50	52
1 (5'1"-5'3")	1 ¼	1 ¼	1 ½	1 ½	1 ¾	1 ¾
2 (5'4"-5'6")	1 ¼	1 ¾	1 ½	1 ⅝	1 ¾	1 ¾
3 (5'7"-5'9")	1 ¾	1 ¾	1 ⅝	1 ⅝	1 ¾	1 ⅞
4 (5'10"-6'1")	1 ¾	1 ¾	1 ¾	1 ¾	1 ⅞	1 ⅞

2. Lining fabric, 140 cm wide, with a directional print, in meters:

Height, cm	Size						
	34-36	38	40	42	44	46-48	50-52
1 (154-160)	0.4	0.4	0.4	0.45	0.45	0.5	0.55
2 (162-168)	0.4	0.4	0.45	0.45	0.5	0.5	0.55
3 (170-176)	0.4	0.45	0.45	0.45	0.5	0.55	0.6
4 (178-184)	0.4	0.45	0.45	0.5	0.5	0.55	0.6

Lining fabric, 55" wide, with a directional print, in yards:

Height, ft	Size					
	34-36	38	40	42-44	46-48	50-52
1 (5'1"-5'3")	¾	¾	¾	½	½	⅝
2 (5'4"-5'6")	¾	¾	½	½	½	⅝
3 (5'7"-5'9")	¾	½	½	½	⅝	⅝
4 (5'10"-6'1")	¾	½	½	½	⅝	⅝

IMPORTANT! When purchasing fabric, please account for shrinkage and buy 5% more than required.

3. Lightweight interfacing, knit or woven, 140 cm wide, cut in two directions, in meters:

Height, cm	Size						
	34	36	38	40	42	44-46	48-52
1 (154-160)	0.6	0.65	0.65	0.7	0.7	0.85	0.9
2 (162-168)	0.65	0.65	0.7	0.7	0.75	0.85	0.9
3 (170-176)	0.65	0.7	0.7	0.7	0.75	0.9	0.95
4 (178-184)	0.7	0.7	0.75	0.75	0.8	0.9	0.95

Lightweight interfacing, knit or woven, 55" wide, cut in two directions, in yards:

Height, ft	Size					
	34	36	38-40	42	44-46	48-52
1 (5'1"-5'3")	$\frac{5}{8}$	$\frac{3}{4}$	$\frac{3}{4}$	$\frac{3}{4}$	$\frac{7}{8}$	1
2 (5'4"-5'6")	$\frac{3}{4}$	$\frac{3}{4}$	$\frac{3}{4}$	$\frac{7}{8}$	$\frac{7}{8}$	1
3 (5'7"-5'9")	$\frac{3}{4}$	$\frac{3}{4}$	$\frac{3}{4}$	$\frac{7}{8}$	1	1
4 (5'10"-6'1")	$\frac{3}{4}$	$\frac{3}{4}$	$\frac{7}{8}$	$\frac{7}{8}$	1	1

4. Stitched bias-cut fusible stay tape with stitch reinforcement, 1.5 cm (5/8") wide — 1.4 m (1 1/2 yd).
5. Stitched straight-grain fusible stay tape, 1.5 cm (5/8") wide — 2.4 m (2 5/8 yd).
6. One invisible zipper, 50 cm (19 5/8") long, for all sizes and heights.
7. Rigilene boning, 1 cm (3/8") wide, for all sizes and heights — 1.9 m (2 1/8 yd).
8. Tape for reinforcing the slit, 2-3 cm (3/4-1 1/8") wide, for all sizes and heights — 5 cm (2") long.
9. One V-wire separator, 19.5 × 16.5 cm (7 5/8" × 6 1/2"), for all sizes and heights.
10. Matching thread — 5 spools (1 spool for the sewing machine + 4 spools for the overlocker).

TOOLS AND EQUIPMENT

- sewing machine for construction
- overlocker for finishing raw edges. This may be replaced with a stretch overlock stitch or a zigzag stitch on the sewing machine (overlock or zigzag stitch width 2–3 mm, stitch length 2.5 mm)
- invisible zipper foot for the sewing machine
- one-sided foot for the sewing machine

PATTERN PIECES LIST

1. From main fabric:

- center front bodice — cut 2
- side front bodice — cut 2
- center back bodice — cut 2
- side back bodice — cut 2
- front skirt — cut 1 on fold
- back skirt — cut 2
- top edge facing — cut 2

2. From lining fabric:

- center front bodice lining — cut 2
- side front bodice lining — cut 2
- center back bodice lining — cut 2
- side back bodice lining — cut 2
- V-wire channel — cut 1

IMPORTANT! Don't forget to transfer all pattern markings and notches onto the fabric.

3. From interfacing:

- center front bodice — cut 4
- side front bodice — cut 4
- center back bodice — cut 4
- side back bodice — cut 4
- top edge facing — cut 2

SEAM ALLOWANCES

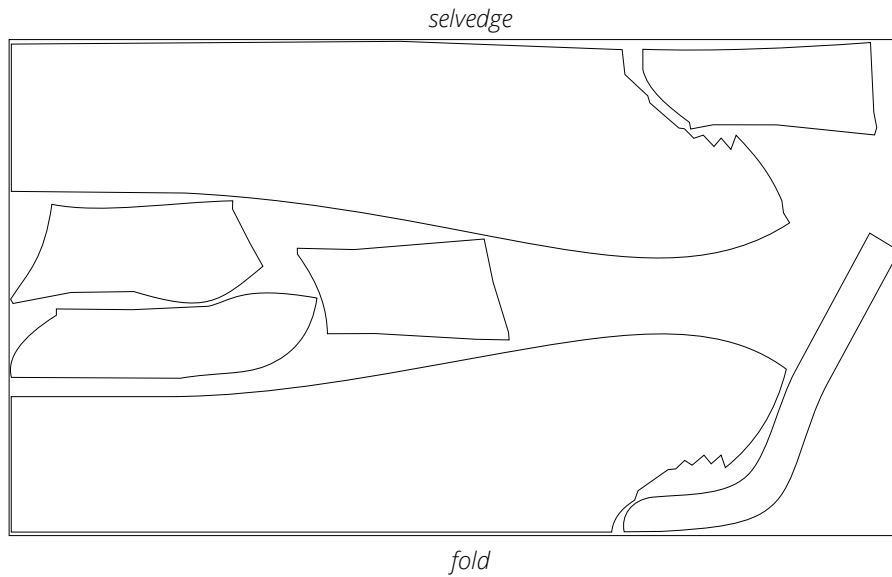
All pattern pieces include seam allowances as follows:

- garment hem allowance — 3 cm (1 1/8")
- center back seam allowance — 1.5 cm (5/8")
- all other edges — 1 cm (3/8")

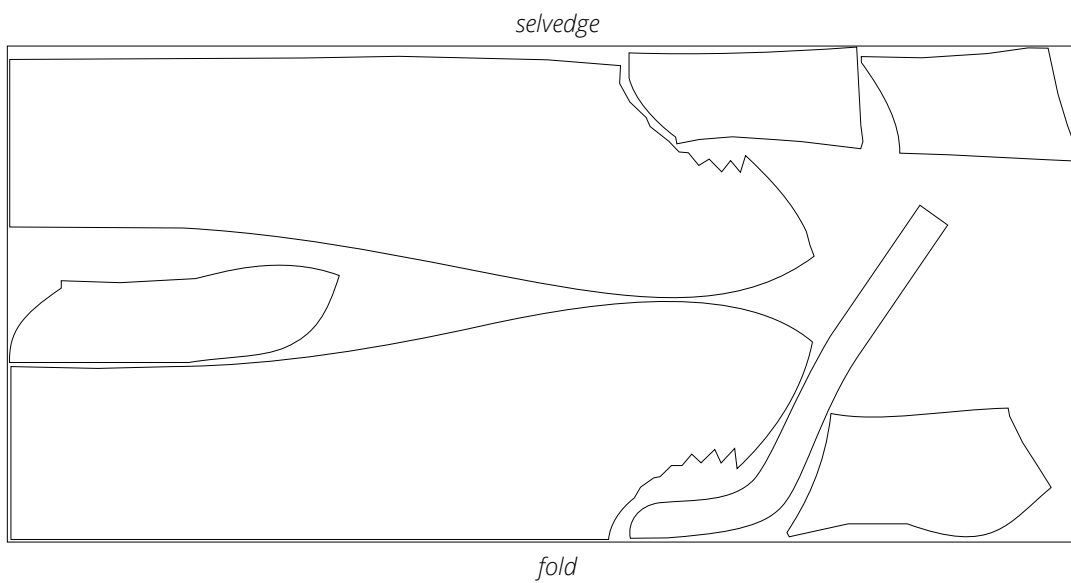
Take this into account when laying out the pattern pieces on the fabric.

CUTTING LAYOUT

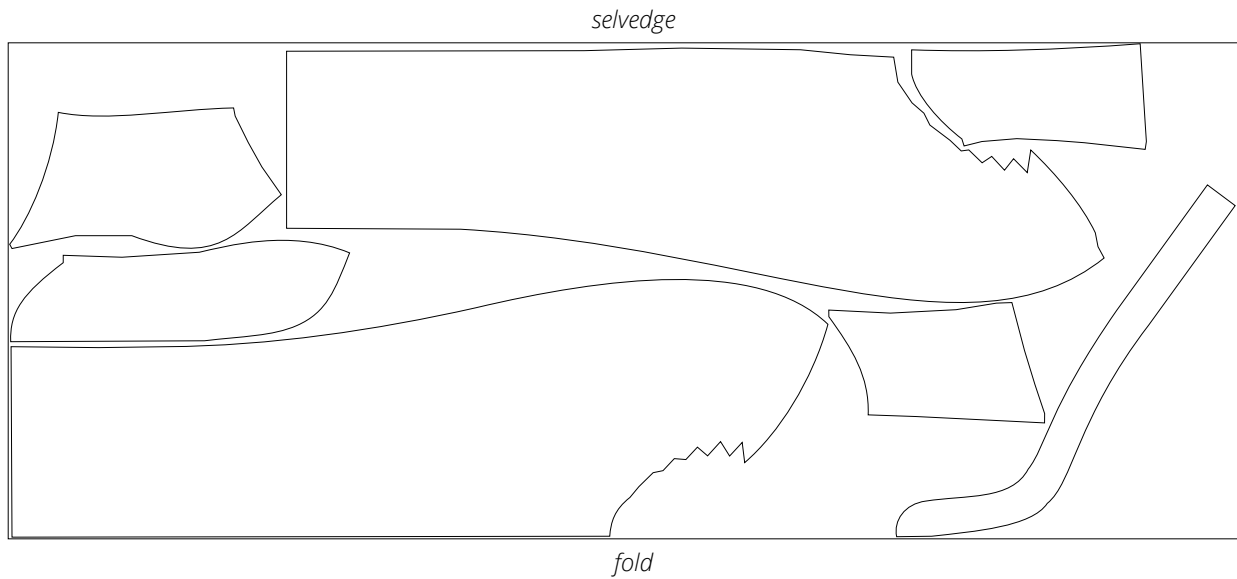
Main fabric, 140 cm (55") wide, with a directional print/nap,
cut on fold, for sizes 34–40 in all heights



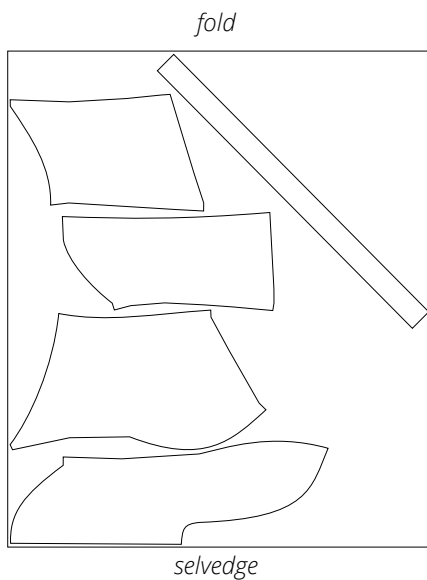
Main fabric, 140 cm (55") wide, with a directional print/nap,
cut on fold, for sizes 42–48 in all heights



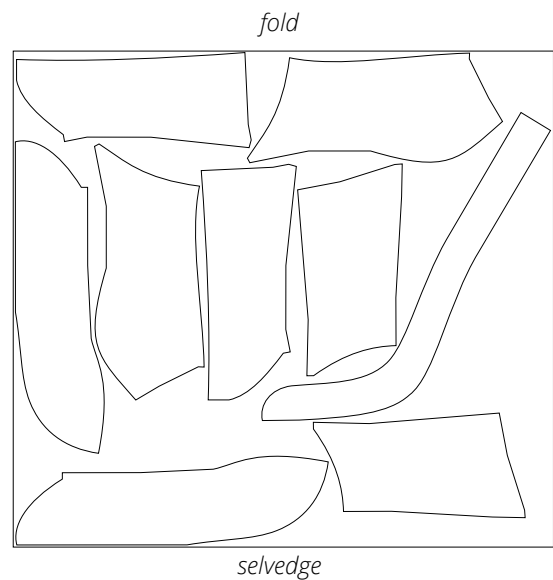
Main fabric, 140 cm (55") wide, with a directional print/nap,
cut on fold, for sizes 50-52 in all heights



Lining fabric, 140 cm (55") wide, with
a directional print, cut on fold,
for all sizes in all heights

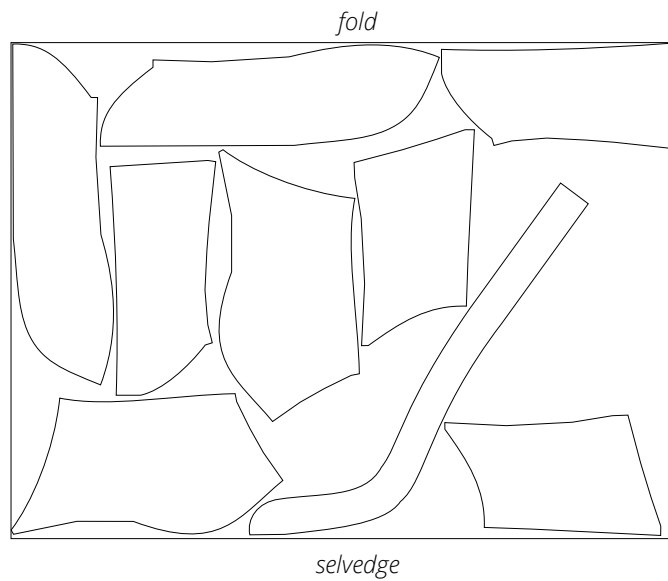


Interfacing, 140 cm (55") wide,
cut on fold, for sizes 34-42
in all heights



Attention! Cut only one V-wire channel.

Interfacing, 140 cm (55") wide, cut on fold,
for sizes 44–52 in all heights



READY? LET'S GET SEWING!



Machine-stitch, backstitching at the beginning and end of each seam.

Press the seams flat.



Clip into the curved sections of the princess seam allowances on the front bodice, stopping 2 mm short of the seam.



Press the seam allowances open.



Using a bust ham, shape the bust curve. Shrink out the fullness in the underbust area on a flat surface.