

FROM THE FOUNDER OF THE #VIKISEWS BRAND



Back in 2016, when I was working on my first set of sewing instructions, I was trying to write them in such a way that even a complete beginner could easily understand and use them to create their very first garment. These instructions laid the foundation for the Vikisews brand, its vision and its mission. I wanted to create modern patterns with the utmost detailed and clear instructions.

Now, with each new collection we are constantly improving our instructions, amending them and adding more relevant details. By the time the final product reaches you, our drafters, correctors, and editors would have spent weeks perfecting every word and every photograph. If you compile a few of our instructions together, you will get a sewing manual that will assist you in sewing all kinds of garments at any difficulty level.

And I would be very happy if these instructions helped you to turn your hobby into a lifelong passion... Enjoy the process! Create your ultimate dream wardrobe! Wear your garments proudly for years to come!

If you have any questions, please contact us at info@vikisews.com — we are always there to help.



ERMILA PATTERN DESCRIPTION

Ermila is a semi-fitted dress with an accentuated waist. The front and back are fitted with princess seams. The dress has a V-neckline and short two-piece grown-on sleeves. The shoulder seam features slits and a decorative twist. Ermila closes with an invisible zipper in the center back seam and is above-ankle length.



IMPORTANT!

The contents of this pattern are copyright protected and belong exclusively to Vikisews. You may use Vikisews patterns for personal use. It is prohibited to share Vikisews patterns and instructions with third parties, as well as to publish patterns and instructions online for public access. **Non-compliance with the mentioned rules is a violation of the US copyright law and may result in civil liability and criminal prosecution.**

You may use Vikisews patterns for commercial use, to sew custom-made garments and/or create fashion collections, on the condition that the patterns are solely used in a manufacturing setting and are not further shared with individuals.

TOTAL EASE ALLOWANCE

	Bust ease	Waistline ease	Hipline ease (estimated)	Upper arm ease
cm	2.3–4.8	2.2–1.2	30.6–32.1	12.6–15.5
inches	7/8–1 7/8	7/8–1/2	12–12 5/8	5–6 1/8

GARMENT LENGTH, SLEEVE LENGTH

Height, cm	Back length, cm	Sleeve length (estimated), cm
1 (154–160)	121.4–124.3	20.4–25.7
2 (162–168)	125.3–128.3	22.4–27.8
3 (170–176)	129.3–132.3	24.5–29.9
4 (178–184)	133.3–136.3	26.5–32

Height, ft	Back length, in	Sleeve length (estimated), in
1 (5'1"–5'3")	47 3/4–48 7/8	8–10 1/8
2 (5'4"–5'6")	49 3/8–50 1/2	8 7/8–11
3 (5'7"–5'9")	50 7/8–52 1/8	9 5/8–11 3/4
4 (5'10"–6'1")	52 1/2–53 5/8	10 3/8–12 5/8

SUGGESTED FABRIC

To sew this dress, choose dress-weight or suiting fabrics with the following properties: medium-weight, structured, non-stretch, opaque. The fiber content can include natural, artificial, synthetic fibers, or blends.

The following fabrics are recommended: shirting, brocade, taffeta.

Attention! We do not recommend stretchy knit fabrics and lightweight sheer fabrics (chiffon, organza, stretch lace).

The dress in the photo is made of taffeta. The fabric is medium weight, structured, soft, and without stretch. The fiber content is 100% silk. The fabric weight is 110 g/m².

FABRIC AND NOTIONS REQUIREMENTS

1. Main fabric, 140 cm wide, with a directional print/nap, in meters:

Height, cm	Size								
	34-36	38	40	42	44	46	48	50	52
1 (154-160)	4.25	4.3	4.35	4.4	4.4	4.55	4.6	4.65	4.7
2 (162-168)	4.4	4.45	4.5	4.55	4.55	4.7	4.75	4.85	4.85
3 (170-176)	4.55	4.6	4.65	4.7	4.8	4.85	4.9	5	5.05
4 (178-184)	4.7	4.75	4.8	4.85	4.95	5	5.1	5.15	5.2

Main fabric, 55" wide, with a directional print/nap, in yards:

Height, ft	Size							
	34-36	38	40	42	44	46	48	50-52
1 (5'1"-5'3")	4 5/8	4 3/4	4 3/4	4 3/4	4 3/4	5	5	5 1/8
2 (5'4"-5'6")	4 3/4	4 7/8	4 7/8	5	5	5 1/8	5 1/4	5 1/4
3 (5'7"-5'9")	5	5	5 1/8	5 1/8	5 1/4	5 1/4	5 3/8	5 1/2
4 (5'10"-6'1")	5 1/8	5 1/4	5 1/4	5 1/4	5 3/8	5 1/2	5 5/8	5 5/8

IMPORTANT! When purchasing fabric, please account for shrinkage and buy 5% more than required.

2. Stitched bias-cut fusible stay tape with stitch reinforcement, 1.5 cm (5/8") wide — 3.3-3.6 m (3 5/8-3 7/8 yd)

3. One invisible zipper, 55-65 cm (21 5/8-25 5/8") long, depending on the chosen size and height

4. Matching thread — 5 spools (1 spool for the sewing machine + 4 spools for the overlocker)

TOOLS AND EQUIPMENT

- sewing machine for construction
- overlocker for finishing raw edges. This may be replaced with a stretch overlock stitch or a zigzag stitch on the sewing machine (overlock or zigzag stitch width 2–3 mm, stitch length 2.5 mm)
- stitch-in-the-ditch foot for the sewing machine (optional)
- invisible zipper foot for the sewing machine
- one-sided foot for the sewing machine

PATTERN PIECES LIST

From main fabric:

- center front + front sleeve — cut 2
- side front — cut 2
- center back + back sleeve — cut 2
- side back — cut 2
- front facing — cut 2
- back facing — cut 2

***IMPORTANT!** Don't forget to transfer all pattern markings and notches onto the fabric.*

SEAM ALLOWANCES

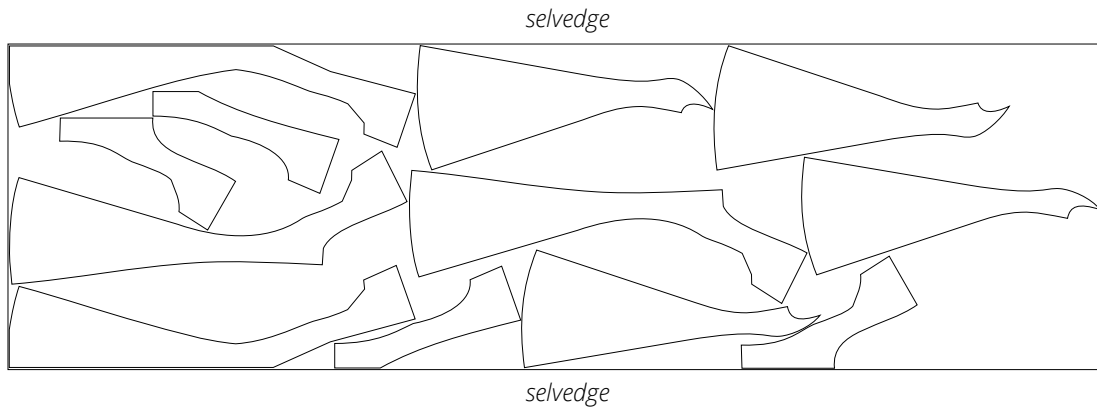
All pattern pieces include seam allowances as follows:

- center back seam allowance — 1.5 cm (5/8")
- all other edges — 1 cm (3/8")

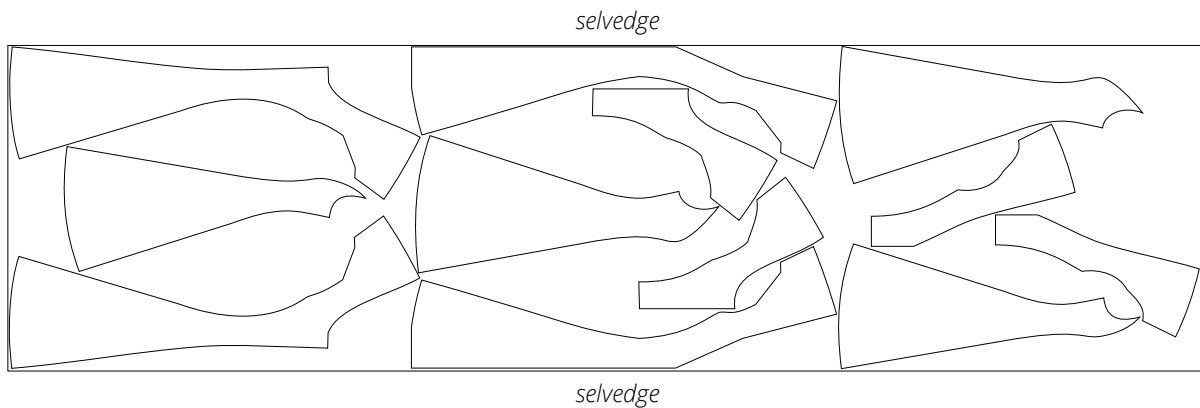
Take this into account when laying out pattern pieces on the fabric.

CUTTING LAYOUT

Main fabric, 140 cm (55") wide, with a directional print/nap,
cut on a single layer, for sizes 34–38 in all heights



Main fabric, 140 cm (55") wide, with a directional print/nap,
cut on a single layer, for sizes 40–52 in all heights



READY? LET'S GET SEWING!



With the right side facing up, overlock the princess seam edges of the assembled center front piece.

Press the seams.



Press the center front seam allowance towards the right piece.



Place the front facing pieces right sides together. Align the center edges, match the notches, and pin. Stitch on the sewing machine, backstitching at the beginning and end of the seam.



Overlock the center seam allowances of the front facing.

Press the seam allowance towards the left piece.