

FROM THE FOUNDER OF THE #VIKISEWS BRAND



Back in 2016, when I was working on my first set of sewing instructions, I was trying to write them in such a way that even a complete beginner could easily understand and use them to create their very first garment. These instructions laid the foundation for the Vikisews brand, its vision and its mission. I wanted to create modern patterns with the utmost detailed and clear instructions.

Now, with each new collection we are constantly improving our instructions, amending them and adding more relevant details. By the time the final product reaches you, our drafters, correctors, and editors would have spent weeks perfecting every word and every photograph. If you compile a few of our instructions together, you will get a sewing manual that will assist you in sewing all kinds of garments at any difficulty level.

And I would be very happy if these instructions helped you to turn your hobby into a lifelong passion... Enjoy the process! Create your ultimate dream wardrobe! Wear your garments proudly for years to come!

If you have any questions, please contact us at info@vikisews.com — we are always there to help.



JUANNA PATTERN DESCRIPTION

Juanna is a semi-fitted dress with an accentuated waist due to the waist seam. The bust darts have been transferred to the pleats. At the front, the bodice features pressed pleats extending onto the skirt. At the back, the bodice is gathered at the waist, while the skirt has waist darts. The dress has a low V-neckline and long semi-fitted set-in sleeves. The shoulder line is extended due to the pleats at the shoulder seams and supported with shoulder pads. Juanna has an invisible zipper closure in the left side seam and is above-knee length.



IMPORTANT!

The contents of this pattern are copyright protected and belong exclusively to Vikisews. You may use Vikisews patterns for personal use. It is prohibited to share Vikisews patterns and instructions with third parties, as well as to publish patterns and instructions online for public access. **Non-compliance with the mentioned rules is a violation of the US copyright law and may result in civil liability and criminal prosecution.**

You may use Vikisews patterns for commercial use, to sew custom-made garments and/or create fashion collections, on the condition that the patterns are solely used in a manufacturing setting and are not further shared with individuals.

TOTAL EASE ALLOWANCE

	Bust ease	Waistline ease	Hipline ease	Upper arm ease
cm	26.7–21.6	0.9–2.1	2.5– 4	5.5
inches	10 ½–8 ½	¾–7⁄8	1–1 ⅝	2 ⅛

GARMENT LENGTH, SLEEVE LENGTH

Height, cm	Back length from waist down, cm	Sleeve length, cm
1 (154–160)	39–41	59.3–61
2 (162–168)	41–43	61.3–63
3 (170–176)	43–45	63.3–65
4 (178–184)	45–47	65.3–67

Height, ft	Back length from waist down, in	Sleeve length, in
1 (5'1"–5'3")	15 ⅜–16 ⅛	23 ⅜–24
2 (5'4"–5'6")	16 ⅛–16 ⅞	24 ⅛–24 ¾
3 (5'7"–5'9")	16 ⅞–17 ¾	24 ⅞–25 ⅝
4 (5'10"–6'1")	17 ¾–18 ½	25 ¾–26 ⅜

SUGGESTED FABRIC

To sew this dress, choose medium-weight or lightweight, soft, non-stretch or low-stretch, opaque or semi-sheer dress fabrics made of natural, artificial, blended, or synthetic fibers.

The following fabrics are recommended: satin, viscose dress fabrics, crêpe de chine, natural or artificial silk.

Fabrics with a blended fiber content are preferable, as they are less prone to wrinkling, generally more resistant to wear and tear, and more durable.

Attention! We do not recommend stretchy knit fabrics.

The dress in the photo is made of lightweight satin. The fabric is medium weight, soft, and non-stretch.

The fiber content is 100% polyester. Fabric weight is 210 g/m².

FABRIC AND NOTIONS REQUIREMENTS

1. Main fabric, 140 cm wide, with a directional print/nap, in meters:

Height, cm	Size									
	34	36	38	40	42	44	46	48	50	52
1 (154–160)	1.4	1.5	1.5	1.55	1.6	1.6	1.7	1.75	1.8	1.85
2 (162–168)	1.45	1.55	1.55	1.6	1.65	1.7	1.75	1.8	2	2.1
3 (170–176)	1.5	1.6	1.65	1.7	1.75	1.8	1.85	1.9	2.05	2.15
4 (178–184)	1.6	1.65	1.7	1.75	1.8	1.85	1.9	1.95	2.15	2.25

Main fabric, 55" wide, with a directional print/nap, in yards:

Height, ft	Size									
	34	36	38	40	42	44	46	48	50	52
1 (5'1"–5'3")	1 ½	1 ⅝	1 ⅝	1 ¾	1 ¾	1 ¾	1 ⅞	1 ⅞	2	2
2 (5'4"–5'6")	1 ⅝	1 ¾	1 ¾	1 ¾	1 ¾	1 ⅞	1 ⅞	2	2 ⅛	2 ¼
3 (5'7"–5'9")	1 ⅝	1 ¾	1 ¾	1 ⅞	1 ⅞	2	2	2 ⅛	2 ¼	2 ⅜
4 (5'10"–6'1")	1 ¾	1 ¾	1 ⅞	1 ⅞	2	2	2 ⅛	2 ⅛	2 ⅜	2 ½

2. Lightweight interfacing, knit or woven, 140 cm wide, 30 g/m², in meters:

Height, cm	Size				
	34	36–38	40–42	44–46	48–52
1 (154–160)	0.45	0.45	0.45	0.45	0.5
2 (162–168)	0.45	0.45	0.45	0.5	0.5
3 (170–176)	0.45	0.45	0.5	0.5	0.5
4 (178–184)	0.45	0.5	0.5	0.5	0.5

Lightweight interfacing, knit or woven, 55" wide, 30 g/m², in yards: ½ for all sizes in all heights.

IMPORTANT! When purchasing fabric, please account for shrinkage and buy 5% more than required.

3. Stitched bias-cut fusible stay tape with stitch reinforcement, 1.5 cm (5/8") wide — 1.95–2.1 m (2 1/8–2 1/4 yd).
4. One invisible zipper, 40–45 cm (16–18") long, for all sizes and heights.
5. One pair of shoulder pads, 1.5–2 cm (5/8–3/4") thick.
6. Matching thread — 5 spools (1 spool for the sewing machine + 4 spools for the overlocker).

TOOLS AND EQUIPMENT

- sewing machine for construction
- overlocker for finishing raw edges. This may be replaced with a stretch overlock stitch or a zigzag stitch on the sewing machine (overlock or zigzag stitch width 2–3 mm, stitch length 2.5 mm)
- stitch-in-the-ditch foot for the sewing machine (optional)
- invisible zipper foot for the sewing machine
- one-sided foot for the sewing machine

PATTERN PIECES LIST

1. From main fabric:

- front bodice — cut 2
- front skirt — cut 1 on fold
- back bodice — cut 1 on fold
- back skirt — cut 1 on fold
- sleeve — cut 2
- front neck facing — cut 2
- back neck facing — cut 1 on fold

2. From interfacing:

- front neck facing — cut 2
- back neck facing — cut 1 on fold

IMPORTANT! Don't forget to transfer all pattern markings and notches onto the fabric.

SEAM ALLOWANCES

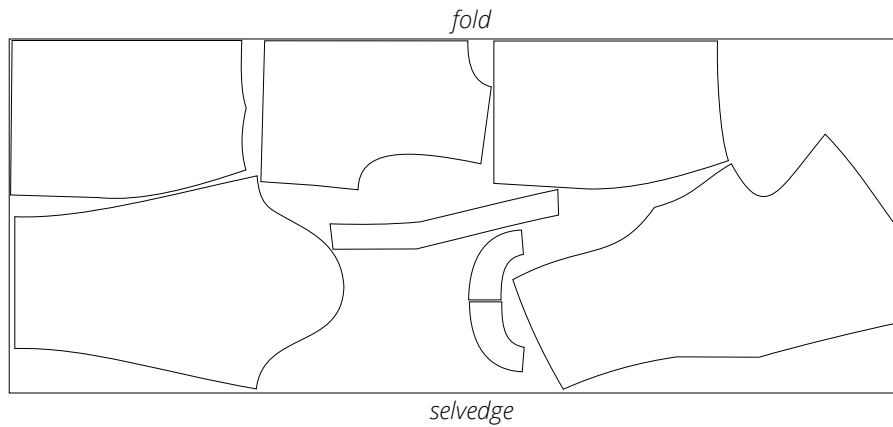
All pattern pieces include seam allowances as follows:

- garment hem allowance — 2.5 cm (1");
- sleeve hem allowance — 2.5 cm (1");
- all other edges — 1 cm (3/8").

Take this into account when laying out the pattern pieces on the fabric.

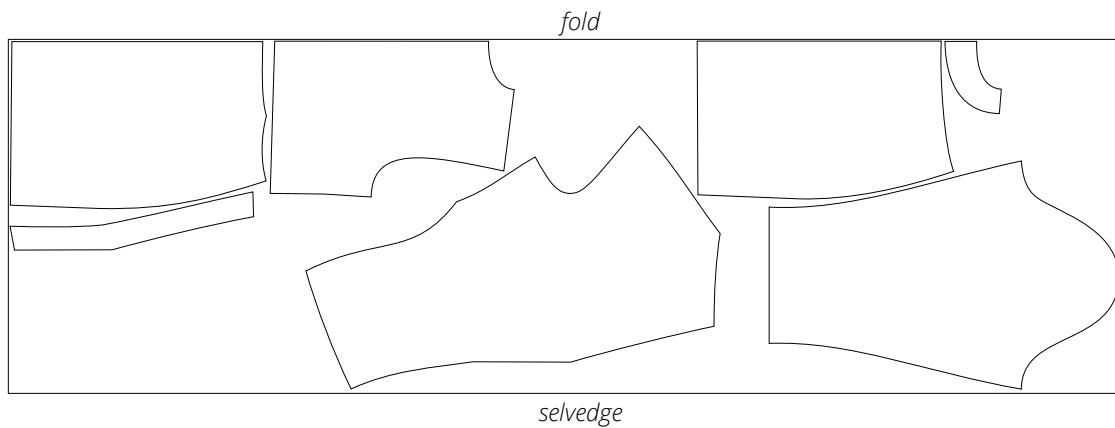
CUTTING LAYOUT

Main fabric, 140 cm (55") wide, with a directional print/nap, cut on fold, for sizes 34-48 in all heights

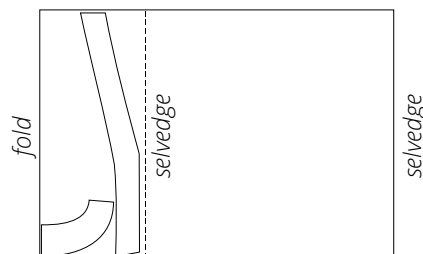


Important! Cut only one back neck facing piece.

Main fabric, 140 cm (55") wide, with a directional print/nap, cut on fold, for sizes 50-52 in all heights



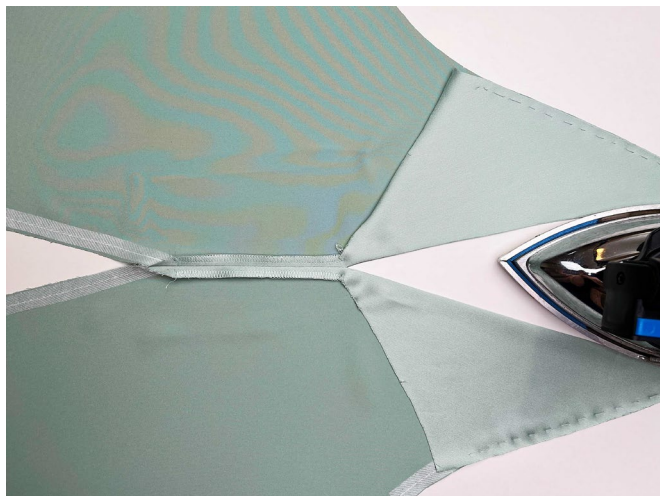
Interfacing, 140 cm (55") wide, cut on a partial fold, for all sizes in all heights



READY? LET'S GET SEWING!



Place the front bodice pieces right sides together. Align the center edges, match the notches, and pin.

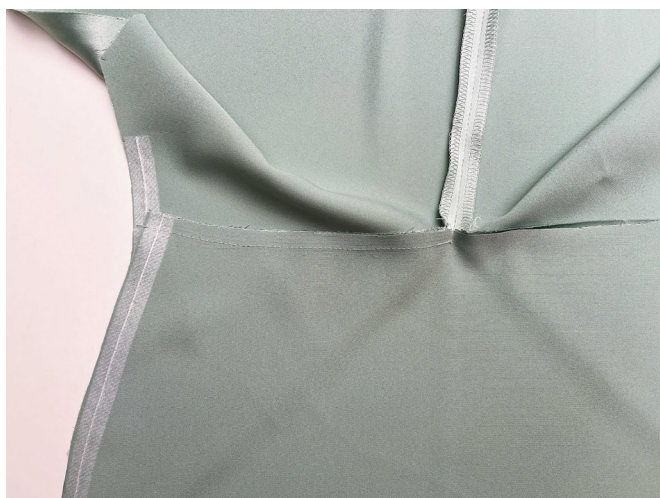


Machine-stitch between the notches, backstitching at the beginning and end. Press the seam flat and press the seam allowances open.

Important! Machine-stitch only between the notches.



Working from the wrong side of the bodice, place the front skirt piece right sides together with the top edge of one pleat. Align the edges, match the notches, and pin from the side seam to the center notch.



Machine-stitch, backstitching at the beginning and end.